

# JFK Redevelopment Program

Community Advisory Council Meeting

10.07.2021



AIR LAND RAIL SEA

*When the doors of the JFK Redevelopment Outreach Office opened, no one was more excited than our first Office Manager Jule A. Grant. Her love for our community and passion for the success of this Redevelopment Project will forever be in our hearts. We pause to celebrate her contributions and to give thanks for the blessing of her life. Sleep in peace our beloved Jule.*

## In Loving Memory Jule A. Grant



Former Office Manager  
JFK Redevelopment Community Information Center



# Agenda

- **Welcome – Congressman Gregory W. Meeks and Borough President Donovan Richards**
- **Program Update**
- **Community Information Center Update**
- **Community Development**
  - **Jobs & Workforce**
  - **L/M/WBE Participation**
  - **Environmental Stewardship**
- **Community Engagement & Outreach**
- **Aeroterm – Cargo Project at JFK**
- **Terminal Developer Updates**
  - **T4/Delta Air Lines & JFKIAT**
  - **T6/JFK Millennium Partners**
  - **T8/American Airlines**
  - **T1/The New Terminal One**
- **Q&A**

## Welcome



Congressman Gregory W. Meeks  
Co-Chair,  
JFK Redevelopment Community Advisory Council



Queens Borough President Donovan Richards  
Co-Chair,  
JFK Redevelopment Community Advisory Council



### JFK Redevelopment Community Advisory Council Co-Chairs

Congressman Gregory Meeks

Queens Borough President Donovan Richards

Due to last minute schedule conflicts, our Co-Chairs were unable to bring remarks as they customarily do but Dr. Grant expressed their excitement about the near-term opportunities that are becoming available and the success stories to date that underscore the importance of the work being done by this Community Advisory Council. They both look forward to the updates and next steps being provided by PANYNJ and our Terminal Developers.

## REMARKS & PANYNJ UPDATES FROM:

JFK Redevelopment Community Advisory Council Facilitator, Dr. Stacie NC Grant

Senior Community Outreach Specialist, Rachelle Antoine

Outreach Specialist, Natasha Turner

Office Manager, Bridgitte Allen

Director, Government & Community Relations Aviation Redevelopment – NY, Hersh Parekh

# JFK Redevelopment: Program Update

There is **major momentum** behind the JFK Redevelopment Program. After a delay caused by Covid-19, **three of the four terminal projects are now advancing**, a major step forward in the ambitious plan to transform JFK into a unified 21st century global gateway.

In August, the PA Board of Commissioners approved a revised agreement with **JFK Millennium Partners** to build a new **\$3.9 billion state-of-the-art international Terminal 6**, which will connect to JetBlue's Terminal 5. The new 1.2 million square foot terminal will anchor the north side of the airport.

The full \$3.9 billion expense of building the terminal will be **privately financed** by JMP. The restructured deal and extraordinary level of private investment reflect a **significant vote of confidence** by the private sector in the future of JFK Airport.

T6 joins the other major components of JFKR: the **\$1.5B expansion of T4**, led by Delta Air Lines and JFKIAT, and the nearly **\$400M million expansion of T8**, led by American Airlines.

Port Authority and New Terminal One continue negotiations to find a way to advance the T1 project.

## Welcome to the Newest Member of Outreach Team!



Bridgitte Allen, Office Manager  
JFKR Community Information Center  
Jamaica, NY

## Updated Office Hours

144-33 & 35 Jamaica Avenue | Jamaica, NY

- The JFK Redevelopment Community Information Center is open two days a week.
- In-person assistance is available Tuesdays, and Thursdays, from 9:00 am to 5:00 pm, by appointment only.
- Port Authority COVID-19 protocols are in effect.
- Please visit [www.anewjfk.com](http://www.anewjfk.com) to schedule an appointment with the MWBE Consultants, and Terminal Developers.



## Sr. Community Outreach Specialist

- The JFK Redevelopment Program is currently seeking a motivated and experienced individual to manage the public outreach and community relations aspects of that program.
- The Senior Community Outreach Specialist will be part of the program management team under HNTB and act as the primary point of contact for public outreach and community engagement, in partnership with Rachelle Antoine.
- For more information, if you have a candidate referral, or for the complete job posting, please email [jfkdevelopment@panynj.gov](mailto:jfkdevelopment@panynj.gov) with "Inquiry | Sr. Community Outreach Specialist" in the subject line.
- The job posting will close on October 15<sup>th</sup>.

# Project Manager – T4

- The JFK Redevelopment Program is currently seeking a motivated and experienced individual to coordinate the design and construction activities for the Terminal 4 Project.
- The Project Manager will be part of the program management team under HNTB and act as the point of contact for Airside coordination and development for the T4 project.
- Minimum Qualifications: Bachelor's degree in Civil Engineering; 10 years relevant experience; 4 years project management experience; Construction experience in civil infrastructure projects; BIM/CAD abilities; Ability to use program information management systems and financial systems; etc.
- For more information, if you have a candidate referral, or for complete job posting, please email [jfkdevelopment@panynj.gov](mailto:jfkdevelopment@panynj.gov) with "Inquiry| Project Manager" in the subject line. This position will remain open until mid-November.

## Project Manager I – Program Management

- The JFK Redevelopment Program is currently seeking a motivated and experienced project manager to be responsible for the leadership and management of team in support of managing the project's technical budget (direct labor and expenses, including technical sub-consultants), schedule, technical requirements, contractual obligations, project communications, etc.
- The Project Manager I will be part of the program management team under HNTB.
- Minimum Qualifications: Bachelor's degree in Engineering or relevant degree; 8 years relevant experience; in lieu of education, 12 years relevant experience.
- For more information, if you have a candidate referral, or for complete job posting, please email [jfkdevelopment@panynj.gov](mailto:jfkdevelopment@panynj.gov) with "Inquiry| Project Manager" in the subject line. The position is available for immediate hire and will be advertised till filled.

# Senior Scheduler

- The JFK Redevelopment Program is currently seeking a motivated and experienced individual to provide guidance, direction and specialized assistance for the resolution of difficult and complex scheduling problems.
- The Senior Scheduler will be part of the program management team under HNTB and build/maintain schedules for projects, monitor and reports on status, and analyze schedule and associated changes for key risk areas and milestones impact.
- For more information, if you have a candidate referral, or for complete job postings, please email [jfkdevelopment@panynj.gov](mailto:jfkdevelopment@panynj.gov) with "Inquiry| Sr. Scheduler" in the subject line. This position will remain open until October 15<sup>th</sup>.

14



## The TWA Hotel is Hiring!

- Open Positions: Overnight House Keeping, Front Desk Agent, Banquet Attendant/Steward, Watch Engineers, Sales Specialist, Facilities Manager, Executive Steward Manager
- On the Spot Job Interviews – October 21 12-2 PM at JFK Redevelopment Community Information Center
- Apply Now! Visit <https://bit.ly/TWAHiring> or scan QR code.



**The TWA Hotel is Hiring!**

**OPEN POSITIONS**  
 Overnight House Keeping  
 Front Desk Agents  
 Banquet Attendant/Steward  
 Watch Engineers  
 Sales Specialist  
 Facilities Manager  
 Executive Steward Manager

**APPLY HERE:** <https://www.indeed.com/cmp/Twa-Hotel/jobs?jk=57a863593da3add8&start=0&clearPrefilter=1>

**ON THE SPOT JOB INTERVIEWS**  
 OCTOBER 21, 2021 / 12 PM - 2 PM  
 JFK REDEVELOPMENT COMMUNITY INFORMATION CENTER  
 144-33 JAMAICA AVENUE JAMAICA, NY 11435  
 (718) 244-3834

## DH2 Chauffeured Transportation is Hiring!

- Open Positions: Chauffeurs, Dispatchers, Detailers
- On the Spot Job Interviews – October 19 12-4 PM at JFK Redevelopment Community Information Center
- For more information or to Apply, call us 718-928-9966 or email your resume to [info@dh2limo.com](mailto:info@dh2limo.com).

**DH2** **WE ARE HIRING!**  
 DON'T MISS OUT ON THIS GREAT OPPORTUNITY!

**CHAUFFEURS** **DISPATCHERS** **DETAILERS**

DH2 Chauffeured Transportation is a fast-growing ground transportation company looking for a dynamic team to join us! We have a diverse fleet of Shuttle Buses, Sprinter Vans and SUV's. Our office is located at JFK Airport with easy access to all highways and public transportation. DH2 is seeking the right candidates for the following departments: Chauffeur, Dispatch and Detailing.

Serious Applicants may inquire at 718-928-9966 or Email your resume at [info@dh2limo.com](mailto:info@dh2limo.com). We would love to hear from you!

**JOIN OUR TEAM!** **OPEN 3617 - 368 DAYS**  
 • Full Time and Part Time Shifts available  
 • Weekly Direct Deposit

[www.DH2Limo.com](http://www.DH2Limo.com)

**FOR MORE INFORMATION CALL US AT 718 928-9966**  
 OR EMAIL YOUR RESUME AT [info@dh2limo.com](mailto:info@dh2limo.com)

**ON THE SPOT JOB INTERVIEWS**  
 OCTOBER 19, 2021 / 12 PM - 4 PM  
 JFK REDEVELOPMENT COMMUNITY INFORMATION CENTER  
 144-33 JAMAICA AVENUE JAMAICA, NY 11435  
 (718) 244-3834

16



# The Edward J. Malloy Initiative for Construction Skills

- The Edward J. Malloy Initiative for Construction Skills is a pre-apprenticeship direct entry program dedicated to preparing a trained and skilled workforce for careers in the unionized construction industry.
- Affiliated with Building & Construction Trades Council of Greater NY
- Recruitment is NOW OPEN for cycle 10, which begins November 1<sup>st</sup>.
- Interested candidates should email [recruitment@constructionskills.org](mailto:recruitment@constructionskills.org) to register for an information and testing session.
- For more information: [www.constructionskills.org](http://www.constructionskills.org).



**Looking for a CAREER in UNIONIZED CONSTRUCTION?**

**CONSTRUCTION SKILLS**  
is looking for you!

Free Training | High Wages | Medical Benefits | Retirement Security

**REQUIREMENTS:**

- NYC Resident 18+ Years Old
- High School Diploma or Equivalency
- Legally eligible to work in the U.S.
- Able to attend 175 hours of full-time training
- Able to perform physical work
- Committed to a clean and sober environment

**INFO & TESTING SESSIONS FALL 2021**

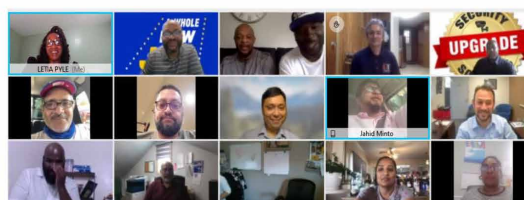
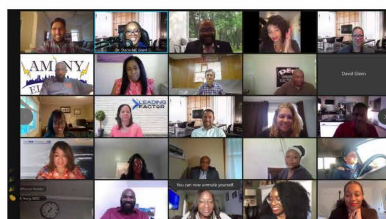
9/28
9/30
10/5
10/7
10/12
10/14

\*Classes begin 11/1

@eskillsnyc www.constructionskills.org

## Project Readiness Boot Camp

- Facilitated by local M/WBE – R.F. Wilkins Consultants.
- 3 cohorts from May 24-June 10, with 44 local Tier 1 and Tier 2 M/WBEs.
- Virtual Graduation on June 17<sup>th</sup>
- Local MWBEs, including those who participated in the Boot Camp received solicitations for Early Works projects beginning June 30<sup>th</sup>.
- Solicitations will continue through October on a rolling basis.



## Local M/WBE Success Stories

Project Name	Awardee	Contract Amount	Local	M/WBE Status	Projected Award Date	# of Local MWBE Firms Solicited	# of Boot Campers Solicited	# of Total Bidders	# of Boot Campers Bid	Lowest Bidder attended Bootcamp
BUILDING 111: ELECTRICAL PANEL UPGRADE	Am Ny Electric Corp.	\$363,908.00	Ozone Park	MBE - B	Awarded 10/05/21	79	12	8	3	YES
BUILDING 111: SECOND AND THIRD FLOOR INTERIOR WALLS	Big L Enterprises, Inc.	\$403,870.92	Cambria Heights	MBE - B	Awarded 10/04/21	173	23	14	9	YES
BUILDING 111: FIRE ALARM SYSTEM	RDS Industries, Inc.	\$259,615.00	Flushing	MBE - H	Awarded 10/05/21	77	9	8	5	No
BUILDING 111: SECOND AND THIRD FLOOR RESTROOM RENOVATION	Lawrence's Contractor, Inc.	\$755,000.77	Springfield Gardens	MBE - B	Awarded 10/04/21	142	44	6	3	YES
BUILDING 111: ELEVATOR RENOVATION	Am Ny Electric Corp.	\$597,000.00	Ozone Park	MBE - B	Awarded 10/04/21	142	44	5	3	YES

# Institute of Concessions (IOC)

Goal: Increase participation of diverse, local businesses at airport in-terminal concessions at JFK .

- September 19, 2019 - PANYNJ hosted first-ever, one-day Airport Concessions Orientation Symposium at Queens Borough Hall. The event was attended by hundreds of interested business owners and demonstrates the demand for concessions.
- Targeting diverse and local businesses, the IOC will **inform and train those with an interest in competing for future food & beverage and retail concessions opportunities** at JFK.
- Providing diverse businesses with the gateway they need to gain the **in-depth knowledge, understanding, practice, and application of key competencies necessary to successfully operate a concession** in an airport in-terminal setting.
- Proposed curriculum: Airports 101, Navigating Concessions, ACDBE Program, Design & Buildout of Concessions, Financial Investment & Return, Legal Operating Models, Logistics for Operating Concessions, Security Requirements, and Procurement Process.
- Identifying a **curated pipeline of educated and diverse concessionaires** that our partners can consider for competitive bidding on their concessions program at JFK.
- Anticipating **launch of IOC in Q1 2022** given the concessions opportunities coming to market!

## ACDBE Certification

**Definition:** An Airport Concessions Disadvantaged Business Enterprise is a for-profit business entity, located on an airport that is engaged in the sale of consumer goods or services to the public.

### Eligibility Criteria for Certification:

- 51% owned by individual or individuals categorized as economically or socially disadvantaged citizens or permanent residents.
- Domiciled at the airport or provide a service to the customers and/or concessionaires at the airport.
- Has size standards for program, industry, and Personal Net Worth (PNW).
- Site visits required.
- Applicant assigns its own North American Industry Classification System (NAICS) code(s).
- 90 days is given to complete new application with a grace period of 60 days.
- The application is available at the agency portal: <https://panynj.diversitysoftware.com/>
- Contact the certification hotline at 212-435-7888 or email [certhelp@panynj.gov](mailto:certhelp@panynj.gov)

## Small Business Grant Program

- The NYS COVID-19 Pandemic Small Business Recovery Grant Program was created to provide flexible grant assistance to currently viable small businesses, microbusinesses and for-profit independent arts and cultural organizations who have experienced economic hardship due the COVID-19 pandemic.
- For more information, please visit [www.nysmallbusinessrecovery.com](http://www.nysmallbusinessrecovery.com).

### Port Authority Certified MWBE Firms:

Did your business have: Gross receipts of up to \$2.5 million?  
A net profit of at least \$1? Losses of at least 25%?  
If so, your business may be eligible to receive a grant of up to \$50,000!!!



On August 25, 2021, Governor Kathy Hochul announced the expanded eligibility to the program to enable more small businesses to apply for funding.

**Don't miss out on the grant funding, apply now!**

For language assistance, guidance on eligibility requirements or any additional questions, please contact the program's call center at 1-877-721-0097.  
Monday – Friday 8am-8pm, Saturday 8am-5pm ET.

Please use the QR code below to apply.



Or visit [nysmallbusinessrecovery.com](http://nysmallbusinessrecovery.com) for more information on how to apply.

New York Empire State  
Development

Powered by  
endurify

# Sustainability Mini Summer Camp 2021

- The JFK Redevelopment Community Outreach Team in partnership with the PA Office of Environment & Energy Programs and the Eastern Queens Alliance hosted a free 5-day mini-camp about sustainability.
- 13 local students from Southeast Queens participated in-person at the JFK Redevelopment Community Outreach Center.
- Topics Covered included climate change, the greenhouse gas effect, the carbon cycle, renewable energy, conservation & resource management, The Clean Water Act and Environmental Justice.
- The mini-camp ended with a special airside tour of JFK Airport.



## Career & Workforce

September STRONG events for Workforce Development Month:  
Successful Training Resources for our Next Generation

- 9/2/21 – CUSTOMER SERVICE, with SUNY EOC
- 9/9/21 – SECURITY, with Allied Universal
- 9/16/21 – CDL, with ABM Industries
- 9/24/21 – HOSPITALITY, with TWA Hotel

## Business Development

- MWBE 101 and Certification, with Queens Chamber of Commerce



## Outreach Events

- 8/2/21 - JFK Rotary Event in Support of Life Camp
- 8/3/21 - National Night Out, 113th Precinct
- 8/13/21 - Faithpreneur Weekend, hosted by Dr. Stacie NC Grant
- 9/8/21 - Family Life Foundation & JFK Redevelopment Back to School Event
- 9/10/21 - P.S. 80 Back to School Event



# Night of Healing

On September 24<sup>th</sup>, Dr. Stacie NC Grant hosted a **Night of Healing** at the JFK Redevelopment Community Information Center to support the victims of the devastation caused by Hurricane Ida across Queens. The event featured many community partners/leaders, elected officials, and artists who offered words of support and shared information about resources and programs to aid with recovery efforts.

For more information or to support, visit:  
[www.NightofHealing.com](http://www.NightofHealing.com).



## Invited Organizations / Businesses



# Event Space Reservation

- If you are looking for a space to host an event, the JFKR Community Information Center is available.
- Please fill out the JFKR Event Space Reservation Form:  
<https://www.anewjfk.com/community-events-public-calendar/>

**THE PORT AUTHORITY OF NY & NJ**

**JFK Redevelopment Event Space Reservation Form**

**Applicant Information**

Full Name: \_\_\_\_\_ Date: \_\_\_\_\_  
 Last First MI  
 Organization: \_\_\_\_\_  
 Address: \_\_\_\_\_  
 Street Address Suite or Floor  
 City State ZIP Code  
 Phone: \_\_\_\_\_ Email: \_\_\_\_\_

**Event Details**

Name of Event: \_\_\_\_\_ Date of Event: \_\_\_\_\_  
 Venue Space: ☐ Community Information Center, Max 15 (seating) - 30 ☐ JFK Airport - Bldg 14, Max 33 (seating or standing)  
 Start Time of Event: \_\_\_\_\_ Event End Time: \_\_\_\_\_ # of Attendees: \_\_\_\_\_  
 Equipment/Space Needs: \_\_\_\_\_  
 Purpose of Event: \_\_\_\_\_

Priority Consideration will be given to events with a nexus to the JFK Redevelopment Program. Please use the space below to describe how your proposed event is related to the JFK Program:  
 \_\_\_\_\_

Signature: \_\_\_\_\_ Date: \_\_\_\_\_  
 Signature (See Reverse Page) Date: \_\_\_\_\_  
 Disclaimer

1

# Partner Virtual Office Hours\*

Organization	Days	Times
M/WBE Compliance Consultants	Monday, Tuesday, Thursday (beginning July 6 <sup>th</sup> )	Monday - 12PM-2PM (virtual) Tues. & Thurs - 2PM-4PM (in-person at Community Office)
The New Terminal One	Monday-Friday	By appointment, new online booking system
JFK Millennium Partners	1 <sup>st</sup> and 3 <sup>rd</sup> Wednesday	1PM-5PM
American Airlines	1 <sup>st</sup> Fridays	11AM-1PM
Delta Air Lines / JFKIAT	Tuesdays	12PM-2PM

In addition to Partner Hours, additional office hours and appointments can be made with Terminal Developers

# Contact Us

## Virtual Office Hours

Monday to Friday – 9 am - 5 pm

(718) 244-3834

JFKRedevelopment@panynj.gov

[www.ANewJFK.com](http://www.ANewJFK.com)

## JFK Redevelopment Community Information Center

Tuesday, and Thursday – 9 am - 5 pm

144-33 & 35 Jamaica Avenue | Jamaica, NY

*By appointment only*

32



## Aeroterm JFK Development Project Overview

### Aeroterm JFK Development Project Summary

- Aeroterm and VRH Construction are embarking on a \$145 million 350,000 square foot air cargo facility development at JFK International Airport
- Three Group VI aircraft parking positions directly adjacent to the warehouse
- The project is the first major air cargo development at the airport in nearly 20 years
- Aeroterm is targeting at a minimum LEED Silver Certification
- Project will span 3 years creating hundreds of construction opportunities for the surrounding community
- Construction is underway as the AOA fence has been erected, asbestos abatement activities are ongoing in Building 260, and demolition of Building 261 has commenced



### Project Inclusion Objectives

Contract Utilization Goals	Workforce Goals
<ul style="list-style-type: none"><li>➤ MBE = 20%</li><li>➤ WBE = 10%</li><li>➤ SDVOB = 3%</li><li>➤ LBE = Good Faith Effort</li></ul>	<ul style="list-style-type: none"><li>Minority Participation<ul style="list-style-type: none"><li>➤ 40% including laborers</li><li>➤ 30% except laborers</li></ul></li><li>Female Participation<ul style="list-style-type: none"><li>➤ 7% including &amp; excluding laborers</li></ul></li></ul>




## Subcontractor Outreach Event Summary

### Subcontractor Outreach Event Conducted September 14th

- Aeroterm and VRH Construction conducted a virtual M/WBE Subcontractor Outreach Event to highlight the project and advertise future participation in the construction process
- The function was open to the public to garner maximum attention from the surrounding community
- The event was publicized on the [A New JFK website](http://ANewJFK.com), by media outlets like the Airport Voice, and through distributed fliers (please see exhibit to the right)
- Subcontractors were directly invited through VRH working relationships, information provided by the PANYNJ, and direct outreach to local elected officials, Queens Chamber of Commerce, Gateway JFK, the Greater Jamaica Development Corp., New York Building Congress, and the Council for Airport Opportunity, among others
- 73 subcontractors responded to our invite and 41 individuals attended the outreach event. Out of the attendees, at least 4 firms were MBE certified and at least 9 entities were WBE certified. There were also at least 11 LBES present at the event
- Qualification Statements have been sent to 6 event attendees
- If you would like the opportunity to be included in the bid list, please send a request to [aerotermino@vrhcorp.com](mailto:aerotermino@vrhcorp.com)

### Future Events

- Future outreach events will be scheduled to coincide with the release of bid packages. Each outreach will be tailored to the trades that are in the bid packages
- Events will be shared with the community in advance to maximize participation



Exceeding Expectations

### Aeroterm M/WBE Subcontractor Outreach Event

VRH, the region's aviation construction specialist, is excited to announce the first new ground up cargo handling facility in many years at JFK. As the select general contractor for the new Aeroterm Cargo Facility, we are pleased to extend an invitation to participate in the VRH M/WBE Outreach Event. We invite MBE, WBE and LBE union subcontractors and vendors to learn about this project opportunity to bid on constructing the cargo handling building and several civil components.

**Discussion topics include:**

- Description of the Aeroterm project, delivered by Magdy Allam, VRH Project Executive
- Introduction to performing business with VRH (prequalification, etc.)
- VRH M/WBE Outreach Program and defined goals
- Aeroterm M/WBE Guidelines
- Possible subcontractor and vendor opportunities
- Q&A

**When:** Tuesday, September 14, 2021  
9:00 AM - 10:00 AM

**Where:** Virtual - Microsoft Teams webinar  
Register by clicking the button below.

**Schedule:** 9:00 AM - 10:00 AM  
Project presentation, Q&A and networking.

Please register by Tuesday, September 7, 2021.

[Click here to register](#)



## Current Bid Progress & Upcoming Opportunities

### Current and Projected Bid Progress

- Awarded Package 1 which encompassed the asbestos abatement, building demolition, and the reconfiguration and installation of the AOA fence
- Three out of four packages remain to be awarded and will go out to market in 4Q21/1Q22
- Targeting a minimum of 30% M/WBE (20% MBE / 10% WBE) and 3% SDVOB participation

Bid Package	Description	Status	M/WBE Participation
1	Asbestos Abatement and Demolition	Awarded	30.49%
2	Relocation of Sanitary Sewer	Bids Welcome	TBD
3	Sitework Package	Bids Welcome	TBD
4	Building Construction Package	Bids Welcome	TBD

### PROJECTED BID DATE | SAMPLE ACTIVITIES / PACKAGES

#### 4Q2021

- |  |  |  |
|--|--|--|
| <ul style="list-style-type: none"> <li>➤ Architectural Features</li> <li>➤ Asphalt Paving</li> <li>➤ Building Concrete Work</li> <li>➤ Curbs &amp; Sidewalks</li> <li>➤ Drywall, Carpentry &amp; Ceilings</li> <li>➤ Electric Exterior Site Lighting – Airside &amp; Landside</li> <li>➤ Elevators</li> <li>➤ Fencing</li> <li>➤ Fire Protection</li> <li>➤ Fireproofing &amp; Waterproofing</li> <li>➤ Foundation Excavation, Backfill &amp; Slab Grading</li> <li>➤ Foundations</li> <li>➤ HVAC</li> </ul> | <ul style="list-style-type: none"> <li>➤ Interior Electric</li> <li>➤ Landscaping</li> <li>➤ Locker/Toilet Fit-Out</li> <li>➤ Masonry Work</li> <li>➤ Mechanical Work</li> <li>➤ Millwork</li> <li>➤ Painting &amp; Floor Sealers</li> <li>➤ Plumbing</li> <li>➤ Precast Concrete Exterior Wall Panels</li> <li>➤ Rigid Foundation Insulation</li> <li>➤ Roofing</li> <li>➤ Sanitary Sewer Services</li> <li>➤ Sewer Interceptor Relocation</li> </ul> | <ul style="list-style-type: none"> <li>➤ Site Concrete</li> <li>➤ Site Demolition</li> <li>➤ Site Excavation</li> <li>➤ Site Utilities</li> <li>➤ Storm Drainage</li> <li>➤ Striping and Signage</li> <li>➤ Structural Steel</li> <li>➤ Tile</li> <li>➤ Toilet Accessories, Mirrors &amp; Partitions</li> <li>➤ Trash Compactor</li> <li>➤ Water Services</li> </ul> |
|--|--|--|

#### 1Q2022

- Tenant Fit-Out (Office & Warehouse)
- Interior Signage

If you would like the opportunity to be included in the bid list, please send a request to [aeroterminfo@vrhcorp.com](mailto:aeroterminfo@vrhcorp.com)

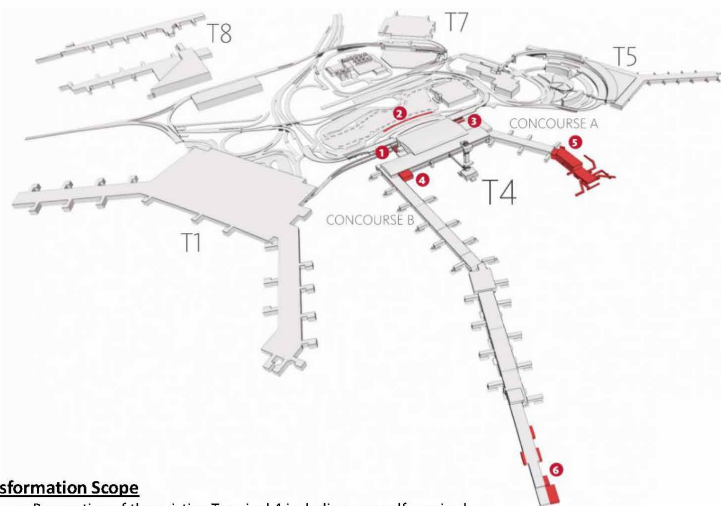


## JFK TERMINAL 4 EXPANSION | PHASE 2.5 PROGRAM UPDATE

October 7, 2021

### JFK REDEVELOPMENT ADVISORY COUNCIL COMMITTEE MEETING

### PHASE 2.5 OVERVIEW



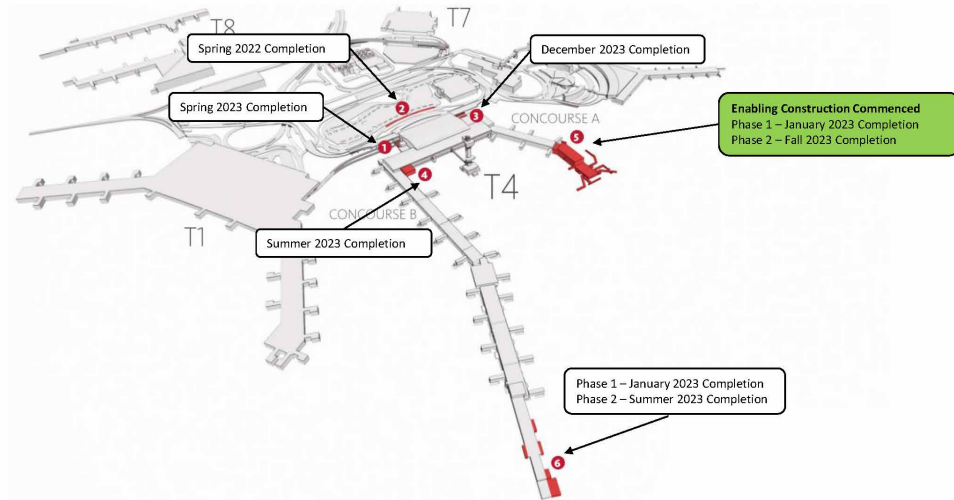
The current Terminal 4 Phase 2.5 expansion is comprised of the following six main elements:

1. West Security Checkpoint Expansion
2. New Arrivals Curb Frontage
3. East Domestic Bag Claim Expansion
4. New Delta Lounge
5. Concourse A Expansion
6. Concourse B Holdroom Expansion

### Transformation Scope

- Renovation of the existing Terminal 4 including new self-service bag check-in/drop, improved retail and food offerings, and other customer experience enhancements including deployment of best-in-class technology and upgraded ticketing and gate holdrooms

## CONSTRUCTION UPDATE & SCHEDULE



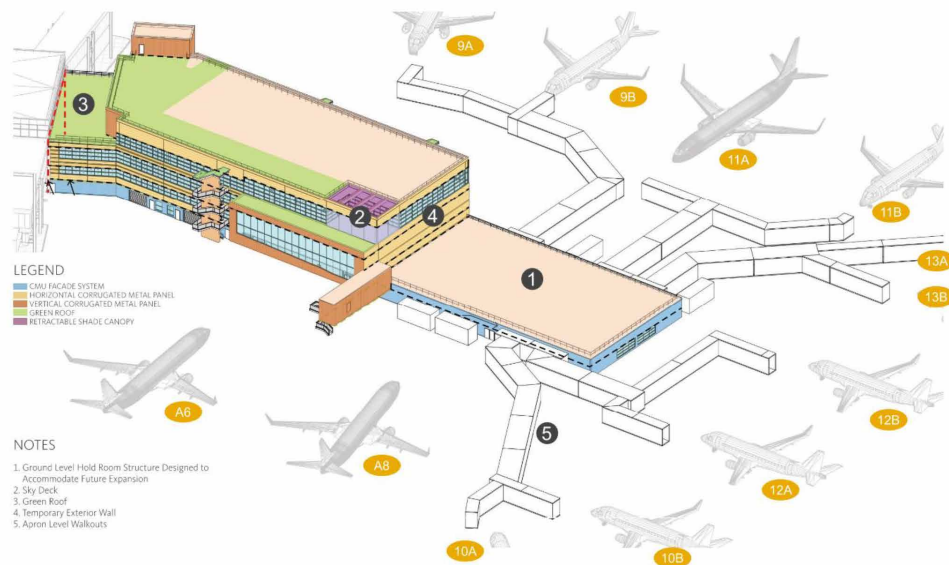
## HEADHOUSE EAST EXPANSION EXTERIOR RENDERING



## HEADHOUSE EAST EXPANSION INTERIOR RENDERING



## CONCOURSE A OVERALL PLAN



## CONCOURSE A INTERIOR RENDERING

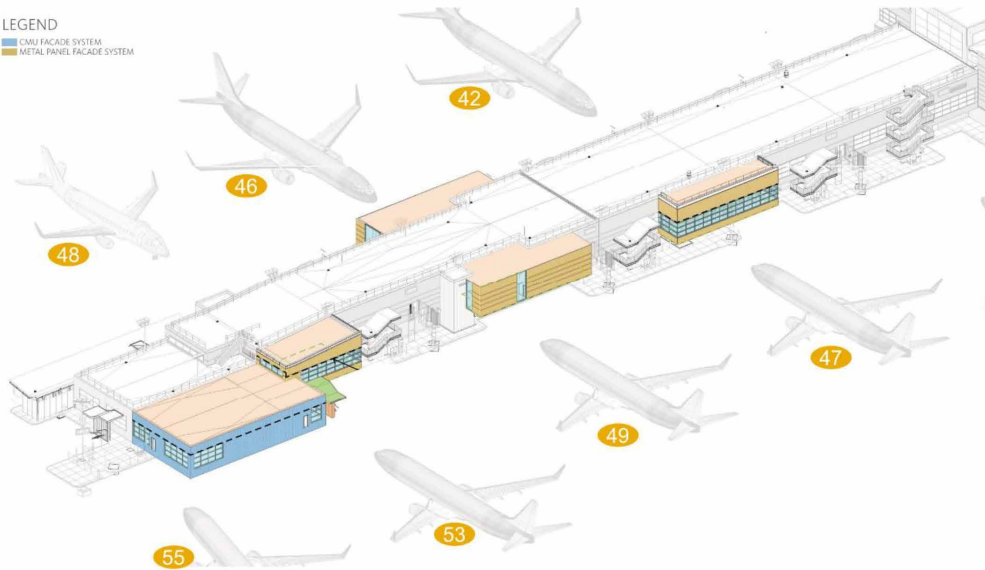


## CONCOURSE A EXTERIOR RENDERING



# CONCOURSE B OVERALL PLAN

LEGEND  
 CMU FACADE SYSTEM  
 METAL PANEL FACADE SYSTEM



## UPCOMING A/E DESIGN PROCUREMENT OPPORTUNITIES

Architectural and Engineering Opportunities	Design Start Date	Design End Date	*CA Start Date	*CA End Date
<b>Concourse A Expansion and Concourse B Renovation</b>				
Project Administration Services	In Progress	Nov-21	Nov-21	Mar-23
BIM Management	In Progress	Nov-21	Nov-21	Mar-23
Structural Engineering	In Progress	Oct-21	Oct-21	Mar-23
Mechanical Engineering	In Progress	Nov-21	Nov-21	Mar-23
Electrical Engineering	In Progress	Nov-21	Nov-21	Mar-23
Plumbing & Fire Protection	In Progress	Nov-21	Nov-21	Mar-23
Architecture design	In Progress	Nov-21	Nov-21	Mar-23
Architectural Lighting	In Progress	Nov-21	Nov-21	Mar-23
Security	In Progress	Nov-21	Nov-21	Mar-23
ITC	In Progress	Nov-21	Nov-21	Mar-23
Acoustics & PA	In Progress	Nov-21	Nov-21	Mar-23
Facades	In Progress	Nov-21	Nov-21	Mar-23
Civil	In Progress	Oct-21	Oct-21	Mar-23
Geotechnical	In Progress	Sep-21	Nov-21	Mar-23
Sustainability	In Progress	Nov-21	Nov-21	Mar-23
Baggage Handling System Design	In Progress	Nov-21	Nov-21	Mar-23
Hydrant Fueling System Design	In Progress	Oct-21	Oct-21	Mar-23

Architectural and Engineering Opportunities	Design Start Date	Design End Date	*CA Start Date	*CA End Date
<b>Headhouse Expansion and Renovation and Landside scope</b>				
Project Administration Services	In Progress	Dec-21	Dec-21	May-23
BIM Management	In Progress	Dec-21	Dec-21	May-23
Structural Engineering	In Progress	Dec-21	Dec-21	May-23
Mechanical Engineering	In Progress	Dec-21	Dec-21	May-23
Electrical Engineering	In Progress	Dec-21	Dec-21	May-23
Plumbing & Fire Protection	In Progress	Dec-21	Dec-21	May-23
Architecture design	In Progress	Dec-21	Dec-21	May-23
Architectural Lighting	In Progress	Dec-21	Dec-21	May-23
Security	In Progress	Dec-21	Dec-21	May-23
ITC	In Progress	Dec-21	Dec-21	May-23
Acoustics & PA	In Progress	Dec-21	Dec-21	May-23
Facades	In Progress	Dec-21	Dec-21	May-23
Civil	In Progress	Oct-21	Oct-21	May-23
Geotechnical	In Progress	Sep-21	Nov-21	May-23
Sustainability	In Progress	Dec-21	Dec-21	May-23
Baggage Handling System Design	In Progress	Dec-21	Dec-21	May-23
Civil Structures Design	In Progress	Oct-21	Oct-21	May-23

Architectural and Engineering Opportunities	Design Start Date	Design End Date	*CA Start Date	*CA End Date
<b>Delta One Club</b>				
Project Administration Services	Starting Sept-21	May-22	Jan-22	Jul-23
BIM Management and Technician	Starting Sept-21	May-22	Jan-22	Jul-23
Structural Engineering	Starting Sept-21	May-22	Jan-22	Jul-23
Mechanical	Starting Sept-21	May-22	Jan-22	Jul-23
Electrical	Starting Sept-21	May-22	Jan-22	Jul-23
Plumbing & Fire Protection	Starting Sept-21	May-22	Jan-22	Jul-23
Architectural Lighting	Starting Sept-21	May-22	Jan-22	Jul-23
Security	Starting Sept-21	May-22	Jan-22	Jul-23
ITC	Starting Sept-21	May-22	Jan-22	Jul-23
Acoustics & PA	Starting Sept-21	May-22	Jan-22	Jul-23
Facades	Starting Sept-21	May-22	Jan-22	Jul-23
Civil	Starting Sept-21	May-22	Jan-22	Jul-23
Geotechnical	Starting Sept-21	May-22	Jan-22	Jul-23
Sustainability	Starting Sept-21	May-22	Jan-22	Jul-23

JFKIAT

DELTA

## UPCOMING TRADE CONTRACT PROCUREMENT OPPORTUNITIES

Bid Package Description	Issue for Bid Date	Construction Start Date
<b>Projectwide &amp; Miscellaneous Trades</b>		
Paymaster	Oct-21	Oct-21
Surveyor	Oct-21	Jan-22
Security Guards & Escorts	Oct-21	Nov-21
Airside Bussing	Oct-21	Nov-21
Pre-Purchase Equipment	Nov-21	Feb-22
Final Cleaning	Jun-22	Sep-22

Bid Package Description	Issue for Bid Date	Construction Start Date
<b>Civil Work/Roadways</b>		
Selective Demolition	Dec-21	Feb-22
Temporary Signal and Traffic Signage	Dec-21	Mar-22
Permanent Roadways and Curb Modifications	Dec-21	Feb-22
Concourse A Apron Civil Package	Nov-21	Apr-22
Concourse B Apron Civil Package	Nov-21	Feb-22
Hydrant Fuel Systems	Oct-21	Dec-21
Site Utilities	Dec-21	Mar-22

Bid Package Description	Issue for Bid Date	Construction Start Date
<b>Concourse</b>		
Civil Support Package	Oct-21	Nov-21
Concourse Under Slab Plumbing	Oct-21	Nov-21
Concourse Structural Steel	Sep-21	Jan-22
Concourse Superstructure Concrete	Nov-21	Mar-22
Curtain Wall Systems	Oct-21	Mar-22
Roofing and Waterproofing	Nov-21	Jun-22
Fireproofing	Nov-21	Feb-22
Misc Metals	Dec-21	Jun-22
Vertical and Horizontal Transportation	Dec-21	Jun-22
Exterior Doors	Dec-21	Jun-22
Mechanical	Feb-22	May-22
Plumbing	Feb-22	May-22
Fire protection	Feb-22	May-22
Electrical - Power, Lighting, Fire Alarm	Feb-22	May-22
Electrical Low Voltage	Mar-22	Jun-22

Bid Package Description	Issue for Bid Date	Construction Start Date
<b>Headhouse</b>		
Headhouse Civil	Dec-21	Jun-22
Headhouse Foundations Concrete	Oct-21	Feb-22
Headhouse Structural Steel	Oct-21	Mar-22
Headhouse Curtain Wall Systems	Nov-21	May-22
Headhouse Roofing and Waterproofing	Jan-22	Jun-22
Headhouse Fireproofing	Feb-22	May-22
Headhouse Misc Metals	May-22	Aug-22
Headhouse Vertical Transportation	Jan-22	Jun-22
Headhouse Exterior Doors	Dec-21	Jun-22
Headhouse Mechanical	Feb-22	Jul-22
Headhouse Plumbing	Feb-22	May-22
Headhouse Fire protection	Feb-22	Jul-22
Headhouse Electrical - Power, Lighting, Fire Alarm	Feb-22	May-22
Headhouse Electrical Low Voltage	Mar-22	Sep-22
Headhouse Relocation of Utilities	Dec-21	Feb-22

JFKIAT

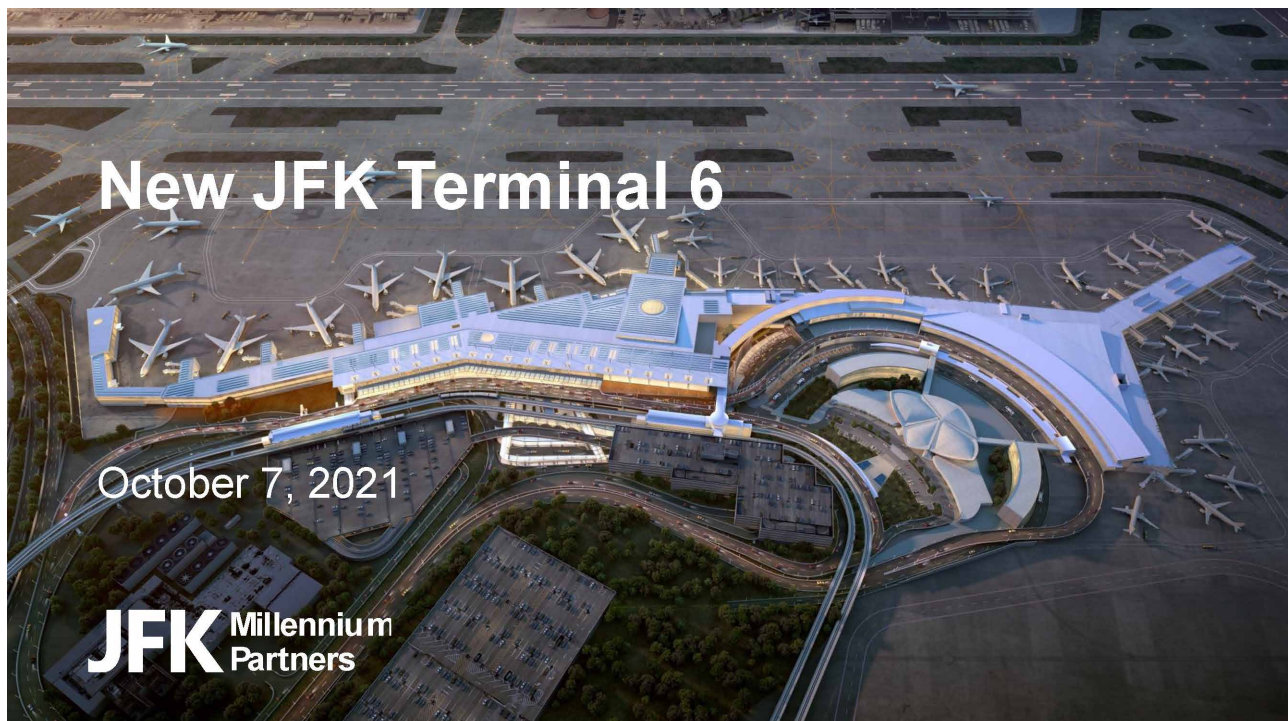
DELTA

## MWBE PARTICIPATION

- Currently negotiating Project Labor Agreement (PLA) with Building & Construction Trades Council
  - PLA will include an MWBE carve out
- MWBE firms in key positions
  - Design:
    - DBB Architects – MBE – Architectural Design
    - Green Solutions – Tier 1 MBE – Baggage Handling Design
    - Foit Albert – MBE – Engineering and Architectural Design
  - Program Management:
    - DACK Consulting Solutions – M/WBE – Estimating
  - Construction:
    - Quality Control Laboratories – Tier 2 MBE – Construction Material Testing
- Targeted outreach event is planned for December
  - Details will be forthcoming

## OTHER

- Competitive Edge Conference
  - Participated in the “Prepare to Take Off with A Whole New JFK” panel on October 7<sup>th</sup>
- Black Business Owners Forum
  - Participating in the “Navigating New Terrain: Gain Access to the Corporate Sector” pane on October 14<sup>th</sup>
- National Association for Minority Contractors (NAMC)
  - Participating in the “Doing Business with the PANYNJ Featuring Aviation's Redevelopment Programs” panel on October 21<sup>st</sup>



## DEVELOPERS:



## MWBE STRATEGY & OUTREACH:



## DESIGN-BUILD FIRM:



## TERMINAL MANAGER:



## JMP's Commitment

- ❖ JMP is committed to identifying, driving, and expanding opportunities for Local and MWBE businesses through all phases of the JFK Terminal 6 Redevelopment Project
- ❖ Working together with the Port Authority of New York & New Jersey and our design build partner, AECOM Hunt, we will use the best practices to work closely with the communities
- ❖ We are excited to work with the Advisory Council and community organizations to partner on continuous outreach and engagement efforts
- ❖ We expect over \$800 million of contracting opportunities from the early stages of the project, through construction, and into long term ACDBE concessions.
- ❖ JMP WANTS YOU! - We're Building Our Future Together



**William C. Thompson**  
JMP Spokesperson MWLBE engagement

## AECOM Hunt's Commitment

- ❖ AECOM Hunt is proud to be a part of JFK Millennium Partners' world-class airport experience at JFK Terminal 6
- ❖ Infrastructure creates opportunity for everyone. The Terminal 6 Project provides a significant opportunity to partner with the Port Authority of New York & New Jersey in ensuring that the communities most impacted by the construction of the New JFK benefit from the program
- ❖ Our Local and MWBE plan recognizes that proactive and strategic outreach to the Local and MWBE business community is essential to expanding awareness, ensuring access to opportunities, and realizing meaningful participation
- ❖ We are actively working closely with the PANYNJ's Office of Diversity and Inclusion to ensure transparency, accountability, and success in achieving the MWLBE goals for the T6 project



**Jay Badame**  
President AECOM Construction

# A New JFK Terminal 6 in the Gateway to the World

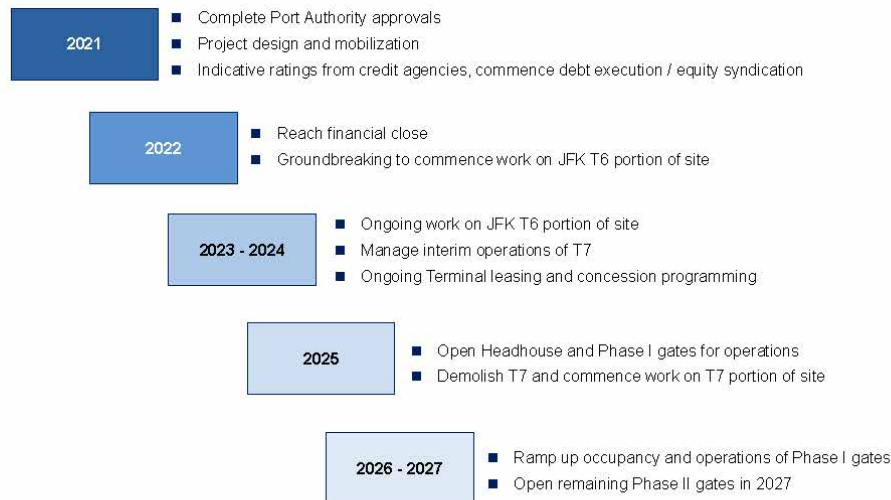
## Key Highlights:

- 9 aircraft gate terminal and apron
- Ground Transportation Center
- Supporting roadways and utilities
- Capital expenditure of \$2.6 billion from 2021-2027 (from total project cost of \$3.9 billion to build the new terminal, including financing and other costs)



JMP will build JFK Terminal 6 as a state-of-the-art terminal for international and domestic flights that will anchor the north side of JFK Airport and connect to Terminal 5

## Timeline from Construction to Operations



## JMP is looking forward to a successful long-term partnership with Local and MWBE Communities

In addition to agreed 30% equity participation, more than \$800 million in MWLBE contracts targeted

2021 – 2027 Pipeline (as of September 2021)				
Category of Work	MWLBE Contract Award Goals	Bid Start Date	Bid Award Date	Timeline of Work
<b>I: Financial and Professional Services</b>	\$20mm	Q4 2021	Q4 2021 through Q1 2022	Q4 2021 through Q2 2022
<b>II: Design and Engineering</b>	\$60mm	Q3 2021	Q3 2021 through Q1 2022	2021 – 2026
<b>III: Construction and Building</b>	\$725mm	Q4 2021	Q4 2021 through 2026	2021 – 2027
<b>IV: Terminal Operations and Maintenance</b>	Procurement will be kicked off in 2024 (3-6 months before Phase I opening) with a strong commitment to concessions and employment participation			2025 - 2060

## Category I: Financial and Professional Services

Estimated timeline from Q4 2021 through Financial closing anticipated in spring 2022

Technical services	Financing	Debt Capital Markets	Bond Issuer Legal	Lender Legal
Specialty consulting and inspections	JMP consortium financial advisor (FA) and related services	T6 project bond underwriting and related services	Bond conduit issuer legal counsel and related services	Lender legal counsel and related services
Estimated timeline for local and MWBE work: <b>Q4 2021</b>	Estimated timeline for local and MWBE work: <b>Q1 2022</b>	Estimated timeline for local and MWBE work: <b>Q1 2022</b>	Estimated timeline for local and MWBE work: <b>Q1 2022</b>	Estimated timeline for local and MWBE work: <b>Q1 2022</b>

## Category II: Design and Engineering

From Q3 2021 through 2024, design lead firms Corgan, AECOM Civil and Langan

Currently out for bid	Expected October - December 2021	Expected 2022-2023
Wind tunnel study	Geotech and site investigation services (continued)	Fit out and interior design
Master Systems Integrator services	Staff augmentation and construction administration	
Document controls services	Civil ITS/Lighting/Traffic Signals	
	Fueling Distribution off existing Mains	
	Surveying (for Boring layout)	
	Geophysical services (utility locating)	
	Test Pit Excavations	
	SPT Drilling	
	Maintenance and Protection of Traffic	

## Category III: Construction Services Upcoming Bid Packages

- More than \$500 million in bid packages to be released this year, with more opportunities to come in 2022 and 2023
- Smaller and locally focused procurements starting in November will include office supplies, security guards, coffee/water/first aid supplies, vibration monitoring, street sweeping, trash hauling, and scaffolding

November 2021			December 2021	
Roofing, cladding, curtain walls, exterior stud framing	Roadway construction	Structural steel	Spray fireproof and insulation	T7 Demolition
Plumbing, HVAC	Apron sitework / mech utilities / pavement	Metal fabrication, stairs, railings	Skylights	
Electrical	Site electrical / mechanical utilities	Masonry	Caulking and waterproofing	
Baggage handling system	Passenger boarding bridges	Terminal landscape / hardscape		
Anticipated bid due dates: <u>Late Dec. 2021</u>	Anticipated bid due dates: <u>Early Jan. 2022</u>	Anticipated bid due dates: <u>Late Dec. 2021 – Jan 2022</u>	Anticipated bid due: <u>Late Dec. 2021</u>	Anticipated bid due: <u>Mid Jan. 2022</u>

## Category III: Construction Services Upcoming Bid Packages

- About 40 bid packages expected in next 60 days ranging from fencing, security to demolition, foundations, apron electrical, pavement marking to structural steel
- Concerted approach to unbundle scope into smaller packages
- Please visit [anewjfk.com](http://anewjfk.com) for details

Upcoming Bid Packages - 90 Days					
GMP	Area	BP #	Bid Package Description	Issue Bid Package	Bid Due Date
GMP	Terminal	53A	Concrete Foundations	11/18/2021	12/28/2021
PSE-GMP	Apron	31E	Early East Side Apron Work	11/22/2021	12/22/2021
PSE-GMP	Enabling	31D	T5 Gates 29/30 and Misc Enabling Work	11/22/2021	12/22/2021
PSE-GMP	Enabling	33A	Utility Relocations / Enabling Work	11/22/2021	12/22/2021
Upcoming Bid Packages - 90 Days (cont.)					
GMP	Area	BP #	Bid Package Description	Issue Bid Package	Bid Due Date
GMP	Terminal	27J	Underground HVAC	11/22/2021	12/02/2021
GMP	Terminal	26B	Electrical - Primary	11/22/2021	12/02/2021
GMP	Terminal	26D	Electrical - Emergency Power	11/22/2021	12/02/2021
GMP	Terminal	26J	Underground Electrical	11/22/2021	12/02/2021
Upcoming Bid Packages - 90 Days (cont.)					
GMP	Area	BP #	Bid Package Description	Issue Bid Package	Bid Due Date
GMP	Roadways	10D	Roadway Signage	11/24/2021	1/5/2022
GMP	Roadways	20I	Roadway Electrical / Lighting / Signs	11/24/2021	1/5/2022
GMP	Roadways	12F	Roadway Construction	11/24/2021	1/5/2022
GMP	Roadways	30X	Roadway - Balance of Work	11/24/2021	1/5/2022
GMP	Terminal	34B	Passenger Boarding Bridges	11/24/2021	1/5/2022
GMP	Utilities	26J	Site Electrical Utilities	11/24/2021	1/5/2022
GMP	Utilities	33D	Site Mechanical Utilities	11/24/2021	1/5/2022
GMP	Utilities	33E	Roadway Hydrants	11/24/2021	1/5/2022
GMP	Terminal	30B	Terminal Concrete Pavement / Handicaps	11/26/2021	12/07/2021
GMP	Terminal	30C	Terminal Landscaping	11/26/2021	12/07/2021
GMP	Terminal	08B	Metal Fabrication, Stairs, Railings	11/26/2021	12/08/2021
GMP	Terminal	09E	Clampy Steel	11/26/2021	12/08/2021
GMP	Terminal	04A	Exterior Masonry	11/26/2021	12/08/2021
GMP	Terminal	04D	Selective Demolition	11/26/2021	1/7/2022
GMP	Terminal	05A	Structural Steel	11/26/2021	1/8/2022

## Smaller and Locally-Focused Procurements

Upcoming Bid Packages		
Bid Package Description	Issue Bid Package	Bid Due Date
Janitorial Services	11/15/21	12/08/21
Modular Offices	11/15/21	12/08/21
CCTV / Security System for Office	11/15/21	12/08/21
Office Furniture	11/15/21	12/08/21
Printing	11/15/21	12/08/21
Office Supplies	11/15/21	12/08/21
Coffee / Water Service	11/15/21	12/08/21
First Aid Supplies	11/15/21	12/08/21
Building Envelope Consultant	11/15/21	12/08/21
Customer Experience Monitor	11/15/21	12/08/21
Surveying	11/15/21	12/08/21
Laser Scanning	11/15/21	12/08/21
Vibration Monitoring	11/15/21	12/08/21
Air / Noise Monitoring	11/15/21	12/08/21
Security Guards	11/15/21	12/08/21

## Smaller and Locally-Focused Procurements (cont.)

Upcoming Bid Packages - Continued		
Bid Package Description	Issue Bid Package	Bid Due Date
SIDA Security Escorts	11/15/21	12/08/21
Badging / Entry System	12/01/21	12/22/21
Storage Containers / Watchman Huts	11/22/21	12/13/21
General Labor	11/15/21	12/08/21
Temporary Fence and Gates	11/15/21	12/08/21
Temporary Protection	11/15/21	12/08/21
Street Sweeping	11/22/21	12/13/21
Snow Removal	11/15/21	12/08/21
Construction Parking Lot Improvements	11/15/21	12/08/21
Temporary Heating/Cooling	11/15/21	12/08/21
Dumpsters / Trash Hauling	11/15/21	12/08/21
Final Cleaning	11/15/21	12/08/21
Glass Cleaning	11/15/21	12/08/21
Pest Control	11/15/21	12/08/21
Misc Tools and Hardware	11/15/21	12/08/21

## Smaller and Locally-Focused Procurements (cont.)

Upcoming Bid Packages - Continued		
Bid Package Description	Issue Bid Package	Bid Due Date
Webcam System	11/15/21	12/06/21
Photography	11/15/21	12/06/21
Temporary Signage	11/15/21	12/06/21
Onsite Medic	11/15/21	12/06/21
Site Safety Manager	11/15/21	12/06/21
Temporary Toilets	11/15/21	12/06/21
Lull Rental	11/15/21	12/06/21
Scaffolding	11/15/21	12/06/21

## JFK T6 in Relation to its local communities and MWBE

- **Serving local communities** with business opportunities from the JFK T6 development and operations is a **top priority** of JMP and AECOM Hunt as the DB partner team
- Both PANYNJ and Empire State Development Corporation maintain their respective lists of registered and certified local firms
- Over 1,200 firms for Cat II (design) and Cat III (construction) work have been identified within Tier 1 (37 zip codes) as of early September 2021 by AECOM Hunt
- As the JFK T6 project buildout advances through 2027 into operations after construction, JMP is **committed to a long-term relationship** with the local communities to maximize the business opportunities through end of Lease in 2060

### Defining LOCAL for Contracting

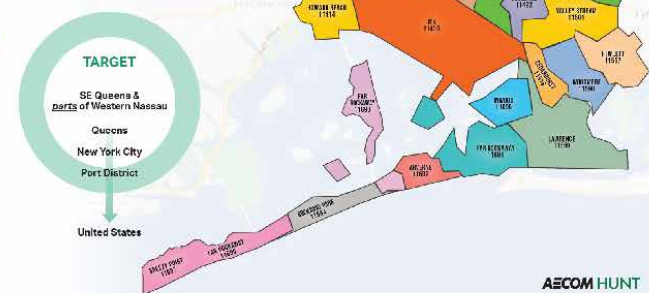
Tier 1 - Within the 37 zip codes surrounding JFK

Tier 2 - Within the Borough of Queens

Tier 3 - Within the Boroughs of Brooklyn, Bronx, Manhattan and Staten Island

Tier 4 - Within the Port District

NY: Kings, Queens, Bronx, New York, Richmond, Westchester, Rockland, Nassau and Suffolk  
NJ: Bergen, Passaic, Hudson, Essex, Morris, Union, Somerset, Middlesex and Monmouth



## We welcome your participation

Join JMP's Virtual Office Hours

**New JFK Terminal 6 - Learn About Opportunities with JMP and AECOM Hunt**

AUGUST 18, 2021

**Overview:**

The Terminal 6 project will be the largest and most complex construction project in the Port Authority's history. It will include a new terminal building, a new baggage claim system, a new security screening system, and a new passenger processing system. The project will also include a new parking garage, a new transit station, and a new bus terminal. The project is expected to be completed in 2027.

AUGUST 18TH, 2021, 1PM-2:30PM

This will be a live webcast. To join the webcast, please register here.

[REGISTER HERE](#)

WWW.AECOMHUNT.COM/JFK-T6-TERMINAL-6

- Active engagement with local and MWBE Community
- Over 1200 attendees at **Virtual Office Hour Meetings** throughout the past year
- Strong engagement with local and MWBE Community including:
  - Email Blasts
  - Phone Calls
  - One-on-One Meetings
- **In Person Meetings** - 1st Thursday of Every Month
- AECOM Hunt created "**Pathways to Compete**" program to assist firms with pre-qualification
- **Prime Bidder Connect:** Wednesday Virtual Office Hours meetings to be used for teambuilding sessions and networking between primes and MWBE businesses
- **PLA concluded with a special provision** that exempts MWBE contracts with value under **\$3 million** that is capped at 5% of the total prime contract to ensure flexibility of subcontracting opportunities for MWBE

# Upcoming Events

October 2021	Organization	Event Title	Event Format
1st and 3rd Wednesday	JMP / AECOM Hunt	Virtual Office Hours	Virtual
Every Tuesday	JMP / AECOM Hunt	<b>JMP / AECOM Hunt Pathway to Connect and Compete:</b> Pre-bid orientation process	Virtual
7		Competitive Edge Conference	Virtual
8-9	NAACP (Economic Development)	Virtual Conference	Virtual
TBD	NAACP	<b>JMP / AECOM Hunt Pathways to Connect and Compete:</b> Trade Tapp Focus	Virtual Introduction to 15 NY based affiliates
14-15	National Association of Minority Contractors (NAMC)	52nd Annual Conference & Awards Ceremony	In Person (AECOM is sponsor)
21	Council for Black Architecture and Engineering and Construction	<b>JMP / AECOM Hunt Pathway to Connect and Compete:</b> Trade Tapp Focus	Virtual
27	National Association of Minority Contractors (NAMC)	Doing business with the PANYNJ: Featuring JFK's Redevelopment at Terminals 4 and 6	Virtual
TBD	Alliance of Asian Architects and Engineers	<b>JMP / AECOM Hunt Pathways to Connect and Compete</b> Presentation: Trade Tapp Focus	Virtual

## Guidelines on Qualifications Process for MWBE Firms

As a MWBE Prime Contractor	As a 2nd tier MWBE subcontractor
<ul style="list-style-type: none"> <li>Valid MWBE certification from PANYNJ or NY Empire State Development Corporation</li> <li>Commitment to MWBE package goals and local workforce requirements</li> <li>Undergo MWBE Commercially Useful Function assessment/validation</li> <li>Complete AECOM/Hunt online contractor pre-qualification and risk-assessment questionnaire via Building Connected/Trade Tapp platform</li> <li>Insurance (in accordance with Port Authority New York/ New Jersey requirements)</li> <li>100% Payment &amp; Performance Bond</li> <li>Adhere to Safety Program and Requirements</li> </ul>	<ul style="list-style-type: none"> <li>Valid MWBE certification from PANYNJ or NY Empire State Development Corporation</li> <li>Undergo MWBE Commercially Useful Function assessment/validation</li> <li>Insurance (in accordance with Port Authority of New York/ New Jersey requirements)</li> <li>Bonding (determined by Prime Contractor)</li> <li>Adhere to Safety Program and Requirements</li> </ul>

All interested parties will use BUILDING CONNECTED portal for qualifying and bidding

**JMP stands ready to enable MWLBE communities to participate widely in the JFK Terminal 6 Project delivery**

**We look forward to connecting with you**

General MWLBE enquiries

Category I – Financial and Professional services

Category II / III – Design and Construction

Diversity Help Desk:

Website

[jean@jeankristensenassociates.com](mailto:jean@jeankristensenassociates.com)

[info@jfk6.com](mailto:info@jfk6.com)

[JFK\\_T6\\_INFO@AECOM.COM](mailto:JFK_T6_INFO@AECOM.COM)

463-203-4790

[anewjfk.com/jetblueterminal6](http://anewjfk.com/jetblueterminal6)



## Terminal 8 JFK Redevelopment Program

### Quarterly Meeting - JFK Community Advisory Committee

October 7, 2021

## AGENDA

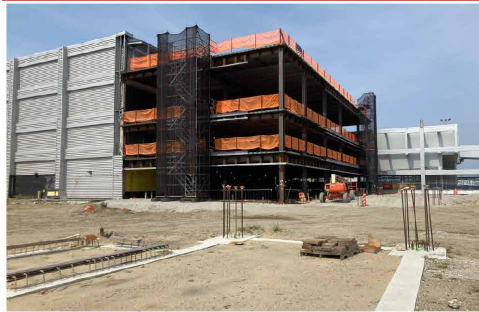
- Program Budget & Schedule Update
- Update on MBE, WBE, and LBE awards
- Success Stories
- Workforce
- Outreach
- Looking Ahead: Final Opportunities Outlook
- Concessions Program Update

## PROGRAM BUDGET

**ORIGINAL TOTAL      \$344,066,373**

**UPDATED TOTAL      ~\$390,000,000**

# PROGRAM SCHEDULE - UPDATE



60' Bump-Out



Interior Work



30' Bump-Out

- 60' Bump-Out: Structure and Deck in place
- 30' Bump-Out: Structure, Deck & Enclosure Complete
- Interior bid awards to be completed this month
- Parcel M Hardstand Paving to begin this month
- Concourse C Gate Reconfigurations: 25% complete
- Baggage Handling System: New CBRA operational, Phase 2 underway
- Level 4 Office Works: complete
- AA/BA Joint Lounge: construction underway
- CCTV Enhancements: construction start this Fall
- Restroom Refresh: construction target start in December
- One JFK Signage: in design
- Concessions RFP out for proposals, award in Q1 of 2022

JFK TERMINAL 8

81

## MBE & WBE PARTICIPATION SUMMARY

(AS OF AUGUST 31, 2021)

Total Awarded to Date including Pending Awards: \$312,481,332		
Category	\$ Awarded	% of Total Awards
MBE	\$50,982,288.05	16.3% (prior 14.7%)
WBE	\$48,853,707.19	15.6% (prior 16.2%)

➤ Significant MBE participation anticipated in upcoming interior awards not counted in above numbers.

**Packages issued for 30' expansion Level 1 interior work :**

- Terrazzo
- Flooring- Resilient
- Finishes
- HVAC
- Electrical

	Invited	Bid received
WBE	69	8
MBE	79	14
Local	60	9

JFK TERMINAL 8

82

## LBE PARTICIPATION – LOCAL WINS TIER 1

(AS OF AUGUST 31, 2021)

Tier 1 (Target Zip Codes)	Location	Including Pending Amount
Jamaica Blue Print: Drawing Reproduction	Jamaica, NY	\$ 66,783.33
Jetway Security	Valley Stream, NY	\$ 972,000.00
Royal Waste	Jamaica, NY	\$ 151,709.74
RCGA: One JFK Vision A&E	Jamaica, NY	\$ 688,742.84
Deutscher & Daughter: Doors & Hardware	Jamaica, NY	\$ 80,793.32
HRF Environmental	Jamaica, NY	\$ 50,000.00
KVC Services	Valley Stream, NY	\$ 2,728,685.00
A&V Steel	Richmond Hill, NY	\$ 810,000.00
Current Fire Protection	Cambria Heights, NY	\$ 661,724.47
Long Island Concrete	Queens Village, NY	\$ 1,160,333.00
B. Holder Photography	Queens Village, NY	\$ 7,000.00
Perry Onah Enterprise	Jamaica, NY	\$ 125,000.00
On Point HVAC	Ozone Park, NY	\$ 92,000.00
EDD Electrical Dist. Inc. (new vendor)	Jamaica, NY	\$ 257,337.20
Seville Central Mix (new vendor)	Lawrence, NY	\$ 3,500,000.00
Jamaica Hardware & Prints (new vendor)	Richmond Hill, NY	\$ 18,448.57
<b>Total Tier 1</b>		<b>\$ 11,370,557.47</b>

Prior Tier 1 Awards = \$7,405,726  
(includes pending awards)

## LBE PARTICIPATION – LOCAL WINS TIER 2

(AS OF AUGUST 31, 2021)

Tier 2 (Borough of Queens)	Location	Including Pending Amount
Strafford Group: Project Management	Flushing, NY	\$ 300,000.00
Ellie NY Design: Millwork	Ridgewood, NY	\$ 141,700.00
Elite Interior	Maspeth, NY	\$ 387,127.04
Carter, Milchman & Frank, Inc: Material Supply	Long Island City, NY	\$ 54,696.30
US Aerial: Equipment Rental	Long Island City, NY	\$ 15,000.00
Bay Crane: Hoisting	Long Island City, NY	\$ 15,000.00
Unity Electric: Electrical	Flushing, NY	\$ 2,265,080.00
Fine Painting: Painting & Acoustical Panels (FCS Group)	Ridgewood, NY	\$ 357,497.65
Montana Datacom	Astoria, NY	\$ 84,268.00
PAL Environmental	Long Island City, NY	\$ 1,126,561.46
EDCC Services Corp	Maspeth, NY	\$ 225,000.00
Garcia Marble	Astoria, NY	\$ 13,500.00
Advanced Electronic Solutions	College Point, NY	\$ 2,660.25
JT&T	Maspeth, NY	\$ 2,376,000.00
	<b>Total Tier 2</b>	<b>\$ 7,364,090.70</b>
	<b>Tier 1 + 2 Total</b>	<b>\$ 18,734,648.17</b>

Prior Total Tier 1 + 2 Awards =  
\$10,787,710 (includes pending  
awards)

JFK TERMINAL 8

84

## OUTREACH- SUCESS STORY

### Setting up for Success

Subcontractor rejected through prequalification process

Multiple meetings to determine gaps in application & how fix them

Subcontractor approved for a small portion of the project & placed on bid list for other opportunities

### Connecting with new businesses

New MBE business owner expressed interest in doing work on T8 project.

Attended "Opportunity Fridays"

Became pre-qualified.  
Succeeded on one of the bid packages and awarded contract

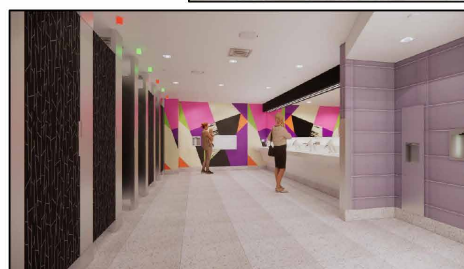
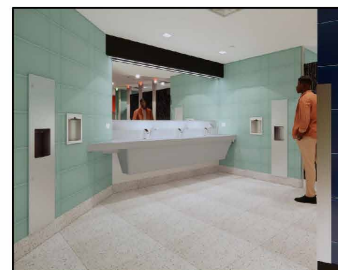
### Employment

Local person wants to on 8 project. To work on airport property needed SWAC which can be cost prohibitive.

Holt Construction sponsored person and is working on project

## ONE JFK VISION – RESTROOM REFRESH

- Refresh restrooms with new fixtures and finishes.
- Start construction in Fall 2021
- Community Engagement - Jamaica Center for Arts and Learning (JCAL)
  - Linda Gajian has been selected for the landmark images.



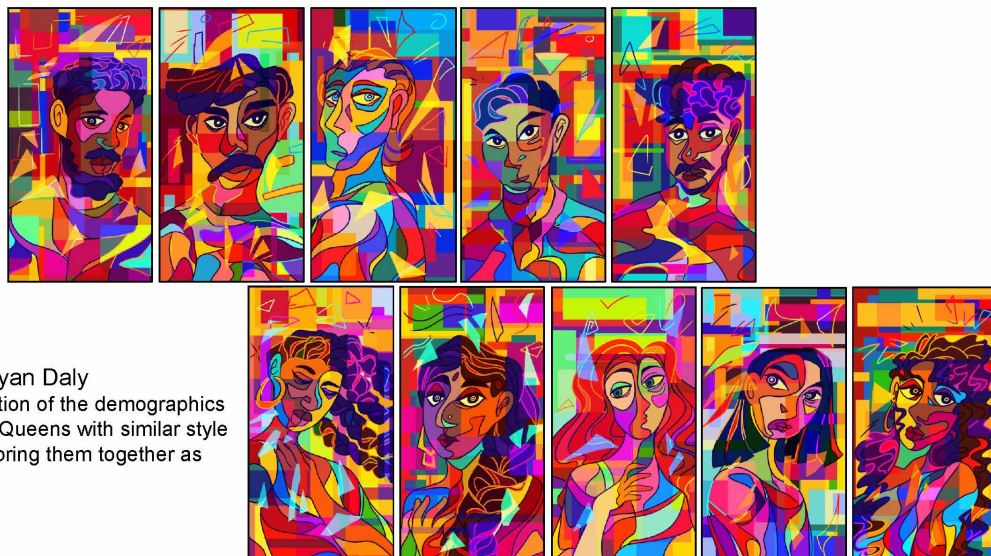
## ONE JFK VISION – RESTROOMS (LANDMARK IMAGERY)

- Landmark Art by Linda Ganjian
  - Highlighting the sights around New York City and Queens.



## ONE JFK VISION – RESTROOMS (PORTRAIT IMAGERY)

- Portrait Art by Cyan Daly
  - A representation of the demographics of southeast Queens with similar style and color to bring them together as one.



## WORKFORCE PARTICIPATION – MINORITY & FEMALE

(AS OF AUGUST 31, 2021)

<u>HOURS</u>	<u>HOURS</u>	<u>Previously (May 2021)</u>
Total Skilled 161,538	<ul style="list-style-type: none"> <li>▪ Minority Skilled: 54,593 (33.9%)</li> <li>▪ Minority Laborer: 28,593 (64.7%)</li> </ul>	34.4% 69.4%
Total Laborer 44,189	<ul style="list-style-type: none"> <li>▪ Female Skilled: 2,700 (1.7%)</li> <li>▪ Female Laborers: 2,051 (4.6%)</li> </ul>	1.2% 5.5%

### Partnerships to increase female and minority skilled participation

- Nontraditional Employment for Women
- Helmets to Hardhats
- Pathway to Apprenticeship
- Edward J Malloy Construction Skills

# WORKFORCE PARTICIPATION – LOCAL TRADE/LABOR

(FROM JANUARY 2021 TO AUGUST 31, 2021)

\*Tracking of participation based on local tier began in January 2021

<u>HOURS*</u>	<u>HOURS*</u>	<u>Previously (May 2021)</u>
Total Skilled 116,453	<ul style="list-style-type: none"> <li>Tier 1 Skilled: 13,035 (11.2%)</li> <li>Tier 1 Laborer: 3,834 (10.6%)</li> </ul>	9.3% 24.6%
Total Laborer 36,209	<ul style="list-style-type: none"> <li>Tier 2 Skilled: 6,970 (5.9%)</li> <li>Tier 2 Laborers: 1,322 (3.6%)</li> </ul>	3.7% 10.4%

Trade/Labor Workforce	Tier	# of Employees	Current Percentage of Trade/Labor Workforce	<u>Previously (May 2021)</u>
Target Zip Codes	1	40	8.5%	8.3%
Borough of Queens	2	55	11.7%	9.0%
Remaining Boroughs	3	77	16.4%	16.3%
PANYNJ Port District	4	288	61.4%	64.3%
Undetermined		9	1.9%	2.3%
Total Trade/Labor Workforce		469		

JFK TERMINAL 8

92

## OUTREACH - INITIATIVES

American Airlines will continue to organize and host regular outreach events and seminars to inform the community of project opportunities. **To date there have been 85+ outreach events since January 2020.**

### Objective of Outreach Events

- Inform MWBEs and LBEs of the current status of project
- Prequalify New Vendors to be placed on bidders list
- Assist Vendors in navigating Potential Bidding Opportunities
- Assist firms seeking Port Authority Certification if necessary
- Provide informational and learning sessions to the community

### Frequency of Events – (Due to COVID 19, Events have been virtual)

- Virtual Office Hours (Monthly)
- Virtual Outreach Events (Weekly/Opportunity Fridays)
- Round Table Discussions-(Monthly with the PA lead)
- Project Specific One on One Meetings with Vendors (Average 2 per Week)

## OUTREACH – Upcoming Outreach Dates

October 8<sup>th</sup>

- Get Pre-Qualified**
- This session will take you through, step-by step, the complete Holt Pre-Qualification process. You will have an opportunity to ask questions and determine which documents you have or might be missing. This is your first step to bidding on a contract. Both MWBEs and LBES need to pre-qualify.

October 22<sup>nd</sup>

- Learn the Site Logistics of JFK T8/ Building a Better Safety Plan, Create Your Safety Checklist!**
- Take this important opportunity to meet with the JFK Terminal 8 expansion project executives, as we layout the JFK Terminal 8 worksite and the outlying factors of working on a complex aviation project. You will also have the opportunity to review your Health and Safety Plan, commonly referred to as a HASP, an important part of your prequalification to work with the Terminal 8 Team. This session will help you build out your plan as well as take-away a checklist that you can use for your work.

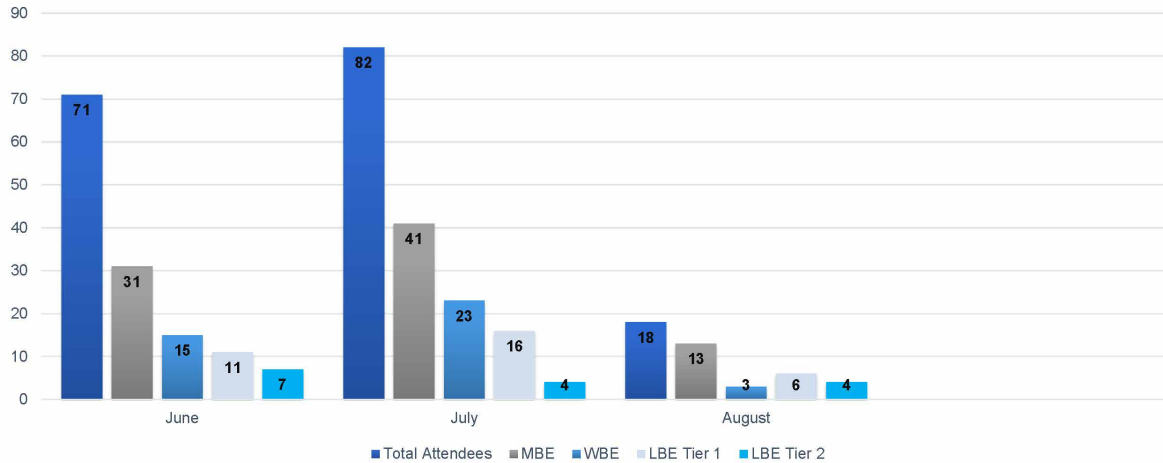
November 5<sup>th</sup>

- Technical Assistance Session**
- If you have any questions regarding your pre-qualification application, safety plan, OCIP, or need any additional technical assistance you will be able to meet one-on-one with our project team! Attendees will be able to register for 10-minute, one-on-one meetings with key decision makers from Holt Construction and American Airlines.

JFK TERMINAL 8

95

## OUTREACH – INITIATIVES Participant Data\*



(\*) July 28<sup>th</sup> event and all events in August were by invitation only

JFK TERMINAL 8

96

## Final Upcoming Opportunities

### Final Opportunities: Out for bid

- TAA 002 – Interiors (Flooring; Carpeting, Terrazzo, Tile, Painting and Wall Covering, Millwork, Ornamental Metals and Glass, Signage)
- TAA 004 – Interiors (Flooring; Carpeting, Terrazzo, Tile, Painting and Wall Covering, Millwork, Ornamental Metals and Glass, Signage)

- Additional Information can be found at

<https://www.anewjfk.com/work-with-us/work-with-american-airlines/>

**This will conclude the opportunities for the T/8 project**

## Terminal 8 Concessions Program – Overview

### Program

- American recently published an RFP to select a partner to redevelop and manage the Concessions Program
- The Program aims to elevate the customer experience while providing new business opportunities for local and disadvantaged businesses

### Outreach

- American is advertising the Program online and in several local and minority newspapers



## Terminal 8 Concession RFP Key Terms

RFP seeks master concession operator to manage approximately 68,000 square feet on secure side of Terminal 8 and on non-secure side near ticketing & baggage claim areas.

- Required Airport Concessionaire Disadvantage Business Enterprise (ACDBE) of 30% and LBE participation
  - Required concession related construction combined M/WBE of 30% (20% MBE & 10% WBE)
- “[W]e expect to see thoughtfully chosen restaurants and shops that appeal to JFK’s specific customer mix; including a variety of local, national and international brands, with a special focus on local businesses...”
- We are looking for “smart, forward-thinking, customer-centric and sustainability-minded design decisions [that] should be the hallmark of concessions space... for customers – the space should be visually captivating, evoking a local NYC sense of place, creating a positive first impression and a unique and memorable atmosphere...”

## Terminal 8 Concessions Program – RFP Timeline

Program Milestone	Date
Issue RFP	Aug 6, 2021
Proposals Due Date	Nov 19, 2021
Respondent Interviews	Jan 2022
Execution and Commencement of Contract	Apr 1, 2022



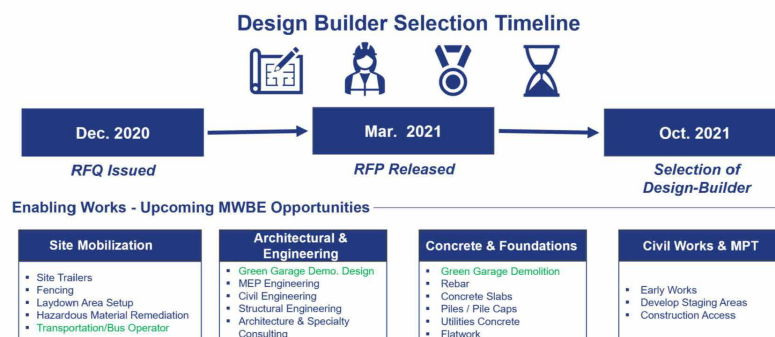
102

## The New Terminal One at JFK: Updates

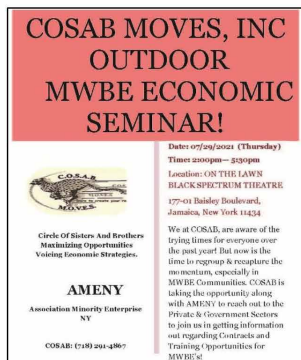
The New Terminal One at JFK (“NTO”) is preparing for a construction start upon the selection of our Design-Build. Our commitment to community engagement, and identification of local and MWBE firms is unwavering.

### NTO Design Builder Procurement Process

- NTO is concluding its procurement process to select a design-builder.
- The selection of a design-builder will allow us to finalize commercial negotiations with the Port Authority of New York and New Jersey, proceed to financial close and begin construction.
- Selected firm(s) will advance schedule, deliver project on budget and drive our local, workforce and M/WBE objectives.



## The New Terminal One at JFK: Community Engagement



### MWBE Economic Seminar sponsored by COSAB-MOVES, Inc. and AMENY

July 29, 2021  
 Black Spectrum Theatre, Baisley Blvd, Queens



## THE NEW TERMINAL ONE

JFK INTERNATIONAL AIRPORT

## The New Terminal One at JFK: Community Engagement

### The New Terminal One supports the JFK Rotary Club

August 2, 2021

Annual Ladies Golf Outing with proceeds going to the selected charities, LIFE Camp Inc. and the Aviation High School Education Foundation.



## The New Terminal One at JFK: Community Engagement

### New Terminal One and the JFK Rotary Club present charitable donation to LIFE Camp, Inc.

August 25, 2021  
 Jamaica, NY

"On behalf of our entire team at LIFE Camp, I would like to extend my deepest gratitude to Kimberly Hardy for selecting our organization to receive today's donation. Building a safer, stronger community requires the support and recognition of partner organizations, and we look forward to leveraging these funds to further our essential work."  
 - Erica Ford, Founder & CEO Life Camp



# The New Terminal One at JFK: Community Engagement

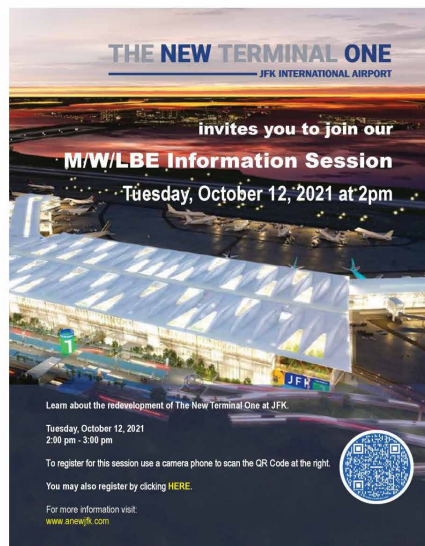
## New Terminal One at JFK Team Distributes Hot Meals to Flood Victims

September 5, 2021  
Hollis, Queens



**THE NEW TERMINAL ONE**  
JFK INTERNATIONAL AIRPORT

## Stay Connected with The New Terminal One at JFK



**THE NEW TERMINAL ONE**  
JFK INTERNATIONAL AIRPORT

### Monthly Information Sessions

- Baggage Handling Systems, July 13
- M/W/LBE Information Session & Networking Forum, Aug 10
- M/W/LBE Information Session & Networking Forum, Sep 14
- [M/W/LBE Information Session, Oct 12](#)
- M/W/LBE Information Session, Nov 9
- M/W/LBE Information Session, Dec 14

### Upcoming Events

- **2021 Black Business Owners Forum**, Oct 14
- **Aviation Scholars Wing Pinning Ceremony**, TBD  
August Martin HS flight training scholarship recipients



### Office Hours

- Visit us at [www.anewjfk.com](http://www.anewjfk.com) to register for:
- **Virtual Meetings**: Daily from 9am to 5pm
- **In-person Meetings**: Thursdays from 12pm to 4pm  
JFKR Community Information Center



**Question:** Delta Terminal 4 is very long. The conveyor belts do not always work and the walk is extremely long. why isn't there better transportation from one end to the other? Ex: a tram or more cart services.

**Answer:** Terminal 4 has the Jitney shuttle bus service that makes 3 stops. The shuttle bus can be used in lieu of walking if your gate is at the extreme end of the terminal.

**Question:** Who were the artist? I've never heard of them and would like to look them up. Thank you!

**Answer:** Landscape Artist: Linda Ganjian and Portrait Artist: Cyan Daly

**Question:** Will a copy of this presentation be available to the participants?

**Answer:** Minutes will be posted on the New JFK website, as we always do after each meeting.

**Question:** Are there part time opportunities?

**Answer:** All opportunities are available on [www.anewjfk.com](http://www.anewjfk.com).

**Question:** I understand there will be minutes. Will a recording be available?

**Answer:** It has not been past practice to share recordings.

**Question:** AMAZING presentation, thank you! Much of the conversation was geared to construction contractors and sub-contractors. I represent a MBE/DBE Engineering firm with 20-years of experience based in Queens. Who would be the best point of contact to get involved with this project?

**Answer:** Please feel to send an email to [jfkdevelopment@panynj.gov](mailto:jfkdevelopment@panynj.gov)

#### **Comment from Philippa Karteron**

Philippa expressed what a pleasure it was to have listened to all the reporting. *"We've come a long way baby."* Special commendations to American Airlines for the level of reporting. The listing of LBE & MWBE firms is what we needed to see, and she is hopeful that future reporting from all developers will follow the same model. She is thrilled to see that we are hiring locally and saluted the progress made by using local artists from JCAL. The entire presentation received huge commendations!

Hersh noted the report, updates and improvements that have been made are a direct result of the feedback that has been received by this Advisory Council.

#### **Final Remarks:**

Reiterated throughout tonight's presentation are opportunities that are continuing to become available from the Aeroterm Cargo Project our Terminal Developers. It is important for the members of this Advisory Council to share this information far and wide. We want to ensure that everyone in the areas surrounding this redevelopment has a fair chance to participate in bidding for and subsequently receiving these legacy building contracts.

For all those suffering for HDD ("Hug Deficit Disorder") we hope to be able to meet safely in person soon. Thank you all for your time and continued participation.