

JFK Redevelopment Program

Community Advisory Council Meeting

10.02.2020



AIR LAND RAIL SEA

Agenda

- **Welcome: Congressman Gregory W. Meeks & Queens Borough President Sharon Lee**
- **Program Update**
- **Local & MWBE Outreach**
- **Community Outreach**
- **Community Development Initiatives**
- **Terminal Developer Updates**
 - **The New Terminal One**
 - **American Airlines/T8**
- **Q&A**

2



Welcome Remarks from JFKR Facilitator & Advisory Council Co-Chairs

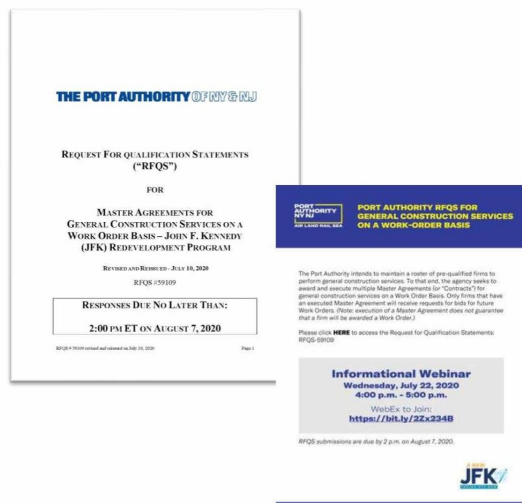
Dr. Stacie NC Grant welcomed everyone, advised participants that the meeting would be recorded and shared thoughts for everyone's health and safety.

Queens Borough President Sharon Lee welcomed everyone and expressed gratitude seeing everyone in attendance. Recognizing one of the key economic drivers for this borough are our local businesses, restaurants, etc. there is quite a bit of work to be done. In spite of the current unprecedented challenges we are facing, we all must work hard to stem the tide of a potential "economic pandemic". We will remain hopeful in that redevelopment can continue

in order to create jobs and opportunities for this communities. Stay safe and well until we meet again at our next Advisory Council Meeting.

Congressman Gregory Meeks welcomed everyone and acknowledged that as we are going through hard times, we must keep going through it because you are generally better for it when you get through it. He continues to struggle in Washington DC, fighting to pass another stimulus plan. This stimulus is needed to help the City and State of NY as well as the PA. Our Airport is only working at 10 % so it is expected for projects to be delayed. We are all very concerned about many small businesses in and around the airport and throughout the Borough of Queens. Airline employees could be furloughed if we don't come to an agreement, 22 thousand NYC jobs could be lost and so much more. NYS is tremendously in debt. An agreement has to be worked out. The passing of the Heroes Bill 2 will help businesses doing business in and at the airports. However, we have to keep the community engaged and create jobs. As Elected Officials, we will keep eyes on the prize so call the office and reach out to share your input and concerns.

MultiBid RFQS



- The Port Authority intends to maintain a roster of pre-qualified firms to bid on work orders for general construction services. Accordingly, the agency seeks to award and execute multiple Master Agreements for general construction work order bids.

Range A – Up to approximately \$2,500,000 (SBE set-aside)

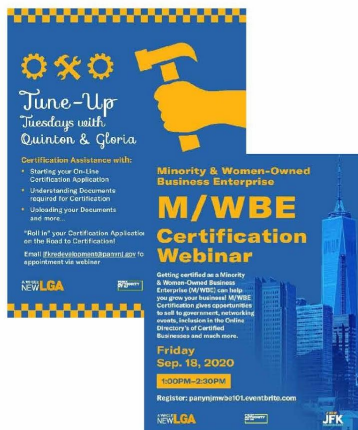
Range B – approximately \$2,500,000 to \$25,000,000

Range C – Greater than \$25,000,000

- Informational Webinar on July 22, followed by dozens of one-on-one phone calls to help firms understand and navigate RFQS.
- RFQS was reissued on August 7th. Based on feedback from the community, the following items were revised to remove barriers and allow more M/W/S/LBEs to participate.
 - Allowed LBEs within Tier 1 zip codes to submit for Range A if they are eligible to become SBE-certified, but are not certified yet.
 - Deleted cap of 10 agreements to allow for inclusion of additional M/W/S/LBE firms on roster.
 - Revised qualification requirements:
 - Reduced minimum number of years' experience
 - Reduced minimum number of projects completed and their total minimum construction cost

M/WBE Capacity Building

Since June 2020, the JFK Redevelopment Program has advanced their M/WBE capacity building efforts through:



- Hosted various M/WBE events in collaboration with the Greater Jamaica Development Corporation, PANYNJ Procurement Team, and LGA & EWR T1 Redevelopment Outreach Teams
- Hosted Monthly Certification 101 Webinars and Bi-Monthly Virtual M/W/S/DBE Certification Assistance Sessions
- Upcoming Events include:
 - Monthly Roundtable Series, continued in October - December
 - Virtual Monthly M/W/S/DBE Certification Workshops
 - For more details on events, please visit www.ANewJFK.com

Local Businesses Selected to Operate Cafeteria at JFK – Building 14

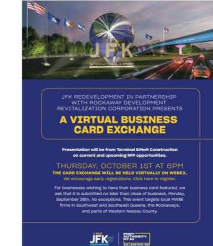
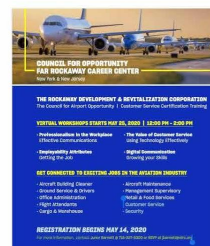
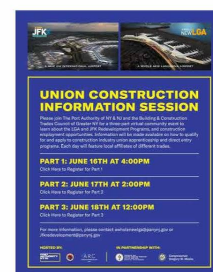
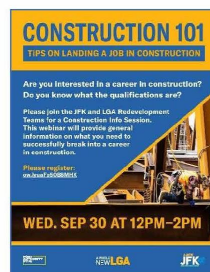


- The Port Authority is pleased to announce its partnership with J&P Runway Café, a local minority-and-woman-owned business enterprise to operate an on-airport employee cafeteria inside of Building 14 at JFK International Airport.
- New venture spearheaded by two successful, local Queens restaurateurs – Annette Runcie, owner of Pa-Nash Restaurant, and Michael Duncan, owner of Jamaica Breeze Restaurant.

Virtual Webinars

Career/Workforce Development and Business Development

- 11 webinars focused on Career/Workforce Development, including partnerships with: Council for Airport Opportunity, The Queens Public Library, and the Building & Construction Trades Council of Greater New York
- 9 webinars focused on Business Development, including collaboration with RDRC for second Virtual Business Card Exchange and the National Association for Minority Contractors.
- Program briefing for faith-based leaders within targeted zip codes.



Virtual Webinars

Education and Environmental Stewardship

- The JFK Redevelopment Team partnered with the Office of Environmental & Energy Programs and the Eastern Queens Alliance to host a free 6-day virtual minicamp about sustainability.
- 40 students from across Queens participated in the free program.

Business Development Initiative Update

- Short-term initiative to establish pipeline for current opportunities
 - Technical training curriculum for M/WBEs expected to launch Q4 2020
 - Exploring feasibility of partnering with local community organization(s) to manage initiative and/or provide training
- The Port Authority is committed to a long-term capacity building and contract matchmaking initiative. But it is on hold while we are evaluating the impacts of Covid-19 and working with the terminal developers to find a way to advance the major terminal projects.

The New Terminal One at JFK: Updates

Revised timeline due to COVID-19 and macroeconomic challenges with construction projected to commence in 2021

1 Contractor Procurement

- The New Terminal One at JFK ("NTO") is on pause due to COVID-related impacts to international air travel
- NTO Team is expected to commence a procurement shortly to select a general contractor
- Selected firm(s) will advance schedule, deliver project on budget and drive our local, workforce and MWBE objectives

Continued Community Outreach:

2 Monthly Information Sessions

- Past: September 15
- Upcoming: October 13, November 10

3 Virtual Office Hours

- Expanded to Monday – Friday (9am-5pm)
- New online booking system on the Virtual Partner Outreach Days page at anewjfk.com

THE NEW TERMINAL ONE
JFK INTERNATIONAL AIRPORT



JFK TERMINAL 8

American Airlines

Holt

AECOM

SIEMENS



Terminal 8 - JFK Redevelopment Program

A Presentation the JFK Community Advisory Council

October 2, 2020

OUR AGENDA

- Meet the JFK Terminal 8 Expansion Team
- About the Project
- Program Budget and Schedule
- Opportunities for MWBEs, LBEs and Workforce
- Opportunities Outlook: Q4 2020-Q1 2021

JFK TERMINAL 8

American Airlines

Holt

AECOM

SIEMENS

Professionals Who Know Construction and Communities

American Airlines

Ron LaDuke
Amanda Zhang
Sade Olanipekun-Lewis
Asmita Gharat
Paul Sefcovic
Veronica Carpio

Holt

Chris Asaro
Mark Phillips
Alexandria Perotti

Penda Aiken

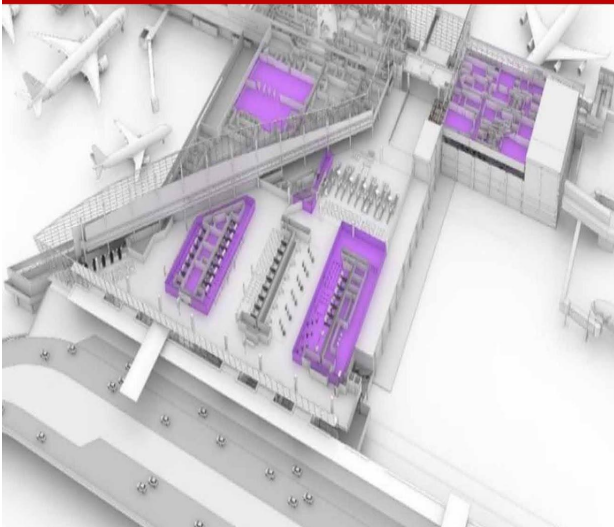
Penda Aiken
Inaldo Chavarria

Quick Snapshot

American Airlines Terminal 8 Expansion Project

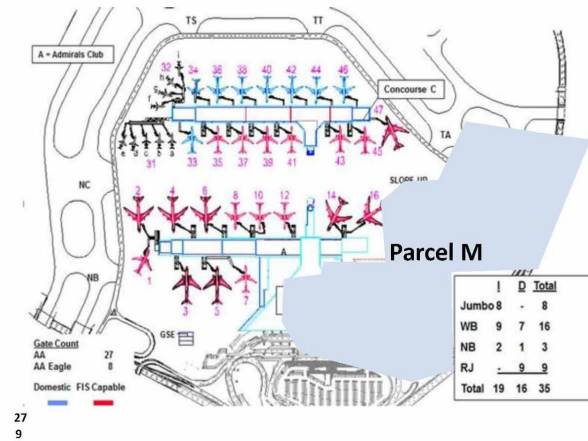
- A total of 54,300 square feet of added space and another 73,000 square feet of existing refurbished space to improve customer experience and allow for co-location with British Airways.
- New amenities include premium lounge, enhanced baggage systems, premium check-in space and upgraded concessions.
- Five additional Wide-Body gates to allow for additional flight capacity as well as additional nearby on-airfield plane parking and unloading areas to accommodate the additional flights.

Program Scope

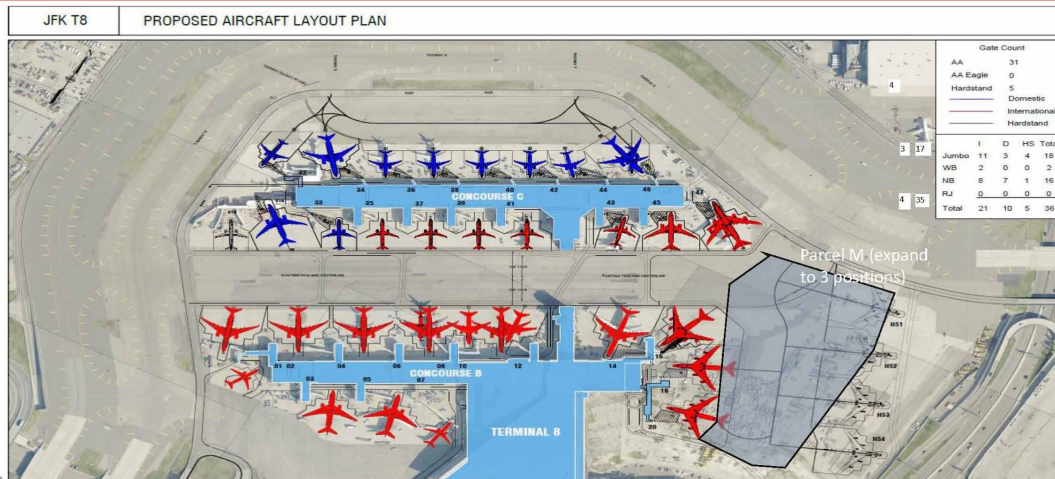


- Partial refurbishment of Check-In Lobby Area, Head House, with a discrete premium passenger check-in area
- Expansion/reconfiguration of gates B14 and B16 to allow construction of new B18 and B20 gates
- Relocation of employee support space for the construction of a Joint AA/BA 3 tier lounge on level 4
- Concourse east extension (60ft) on ramp (L1), interstitial (L2), and boarding levels for Gates B18/20 (L3)
- Head house extension (30ft) on arrival supports addition of a new international reclaim carousel, relocation of offices and public toilets. Interstitial levels supports the new Baggage Handling System

Terminal 8: Existing Plan



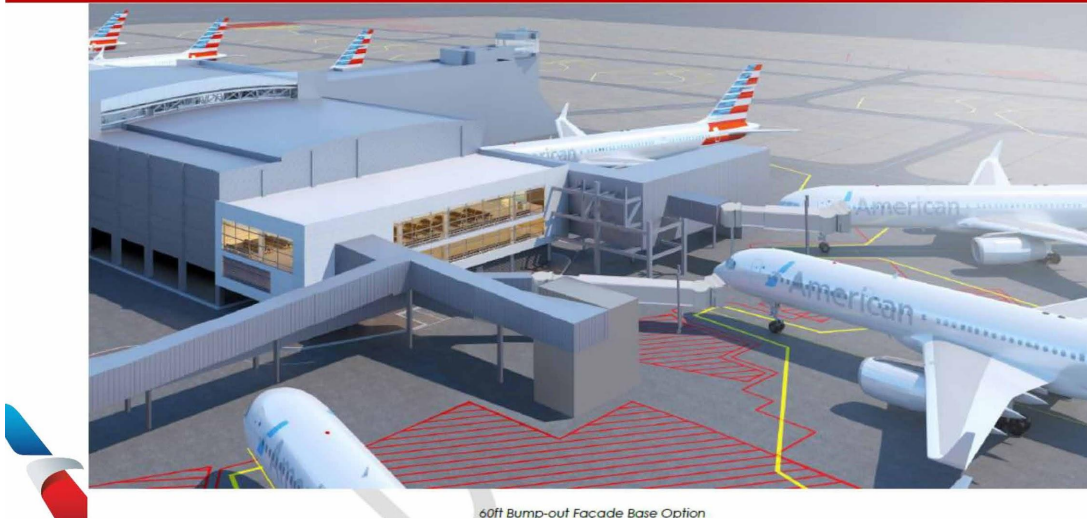
Terminal 8: Proposed Plan



Terminal Expansion Overview

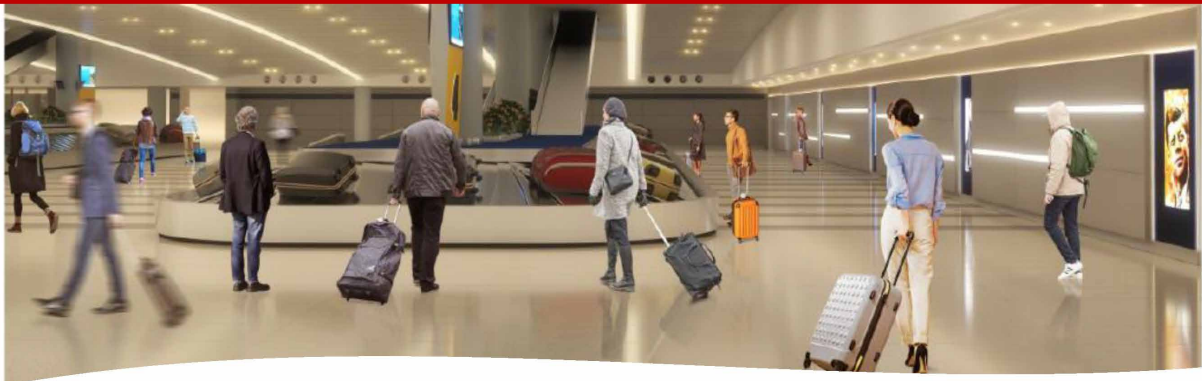


New Gates B18 & B20



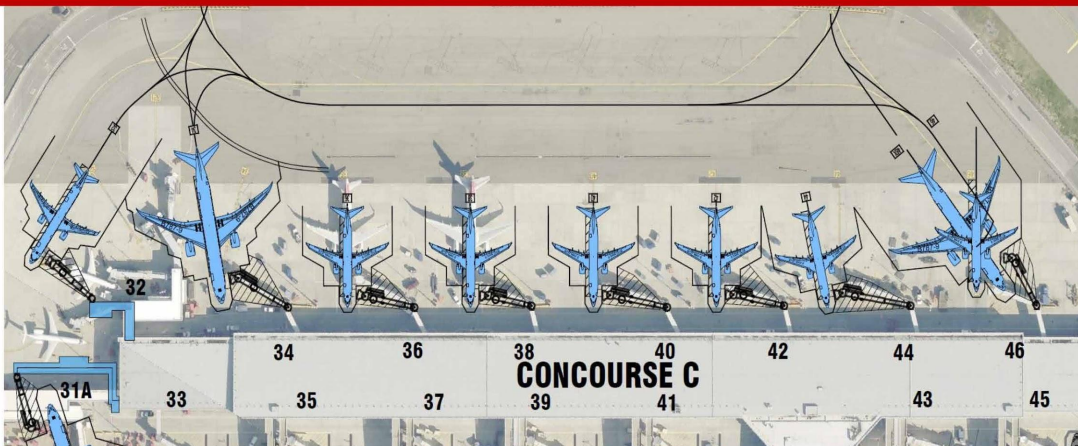
60ft Bump-out Facade Base Option

New International Re-Claim 4



30' expansion that will include restroom relocation and new Customs and Border Patrol office spaces

Concourse C – Fuel Pit Modifications



Gates C31A, 32, 34, 36, 38, 40, 42, 44 and 46

Reconfiguration of Existing Employee Space

Enabling project for Joint Lounge

- Flight attendants
- Customer services
- Corporate security
- Pilots space relocation

New spaces and relocation

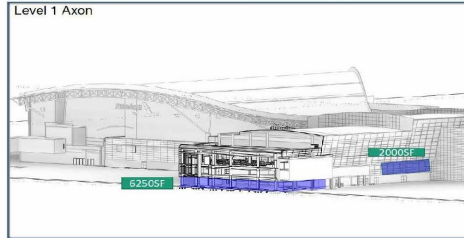
- TSA
- CBP
- Vendor

Core and shell construction for BA employee spaces

Existing Layout



Proposed Layout



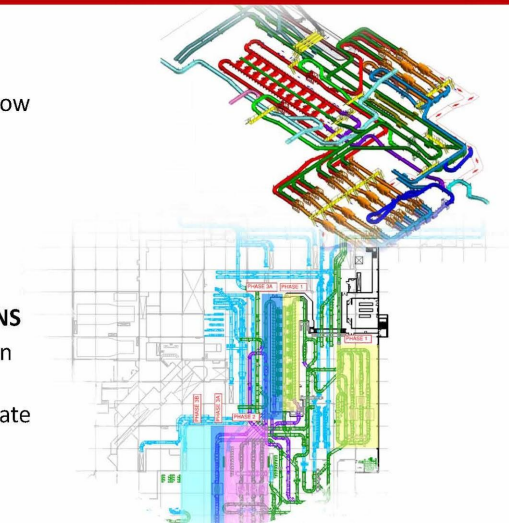
Baggage Handling System (BHS) Optimization

BAGGAGE SECURITY

- Reconfigure the inline bag screening matrix to allow for the installation of nine new high-speed explosive detection units (CTX9800s)
- Construct a new manual search area to accommodate 40 TSA search tables to inspect suspect bags, up from 12 tables today

CLAIMS DEVICE AND MORE BAGGAGE CONNECTIONS

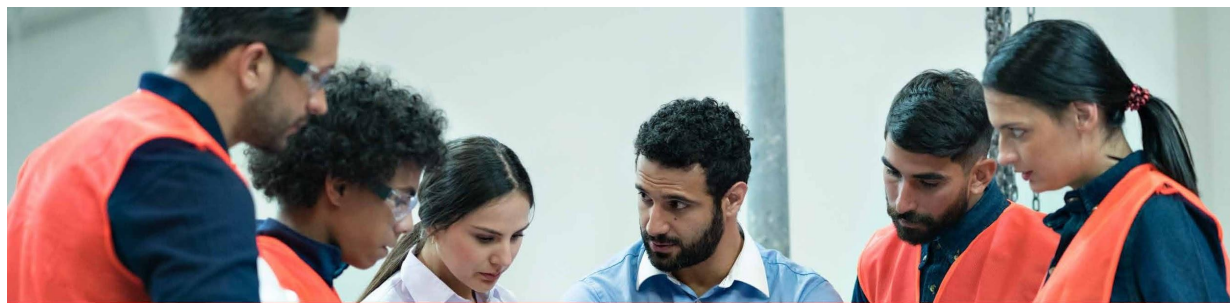
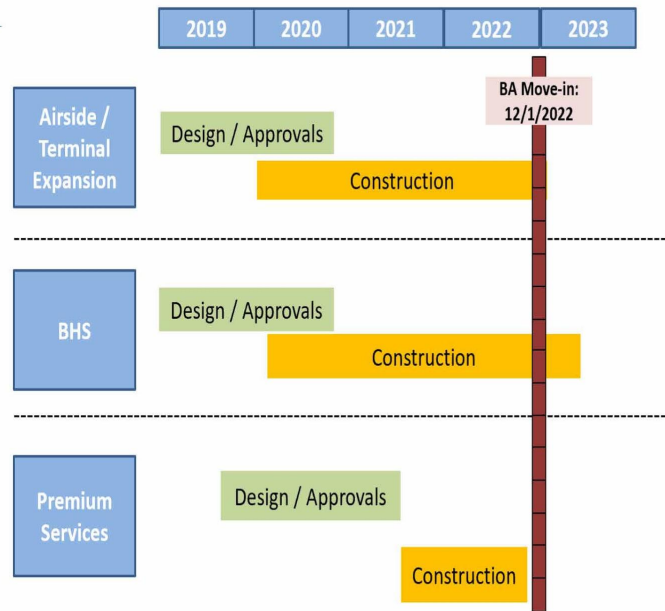
- Addition of a 4th international claim device within the Customs claim area
- Extension of interline conveyors under the new gate house structure for the transfer of other airline connecting bags to/from Terminal 8 and ATO conveyor work



Terminal 8 – Program Budget

		Funding
Terminal 8	Construction	\$165,115,417
	BHS	\$85,302,720
	BHS Right of Way	\$5,000,000
Joint Lounge/Check-In		\$63,648,236
One JFK Vision	(Restrooms, Signage, Branding)	\$25,000,000
Total		\$344,066,373

Terminal 8 Program Schedule



Opportunities for M/W/BEs, LBEs and Workforce



Contracts to Build Companies

**A \$344 Million Project with
30 Percent and More
Subcontracting Opportunities**

- 20 percent MBE Participation = \$68.8 Million
- 10 percent WBE Participation = \$34.4 Million
- Local Business Enterprise in Targeted Zip Codes

MWBE Contracts: Summary of Total Participation as of 8.31.2020

TERMINAL WORKS

Committed Value	35,967,448	
MBE Awards	9,996,962	28%
WBE Awards	2,738,112	8%
Total M/WBE Awards	12,735,074	35%

BAGGAGE HANDLING SYSTEM

Committed Value	87,500,000	
MBE Awards	13,855,083	16%
WBE Awards	23,217,303	27%
Total M/WBE Awards	37,072,386	42%

LBE Activity from December 2019 – September 2020

	Type	Zip Code
Direct Contracts		
GMA Electrical Corp.	Electrical	10314
Brookside Painting	Paint	10803
Commodore Construction Corp	Masonry	10550
Yaboo Fence Co	Furnish & Install Temp Fence	10994
Altair Enterprises Corp.	HVAC Relocates	11101
Cardoza Plumbing Corp.	Plumbing Relocates	11590
Pristine Services, Inc.	Labor and Equipment Vendor	10604
Penda Aiken	MBE/WBE Compliance	11217
Cassone	Trailers & Facilities	11779
Jamaica Blue Print	Printing	11435
Jetway security	Security Escorting	11430
USA&E	Equipment Rental	11101
Classico Building Maintenance	Labor and Equipment Vendor	10467
Subcontracted		
Island Cutting & Paving	Cutting Concrete and Sealants	11704
Munoz Trucking	Trucking and Hauling	07031
Breit Enterprises	Site Work Material Supply	11735
Petroscan, LTD	Feuling	11735
Tiki Industries	Manufacture Site Materials	11716
Yuen Ling Enterprises, Inc	MEP Sitework	11201
Malcolm Patrick Corp	Fencing & Protection	10801
Park Avenue Building Supply	Building Supply	11233
D-Star Waterproofing	Waterproofing	11575

Removing Insurance Barriers AA'S OWNER CONTROLLED INSURANCE PROGRAM (OCIP)

- American Airlines has provided for this project to be insured under an OCIP.
- Excess liability is also included.
- Participation in the OCIP is mandatory for all eligible parties, except for those identified as excluded parties

**The Local Business contracting and Workforce data reported by AA was erroneous and will be corrected at the next Advisory Council meeting.*

Partnering Opportunities



Partnering and Team Opportunities Between Major Subcontractors (Tier 1) and MWBE/LBE Subcontractors

Here's how we plan to implement:

- Strategic teaming meetings, pairing MWBE/LBE subs
- New introductions to major Subcontractors already on the project

TARGETED TRADES

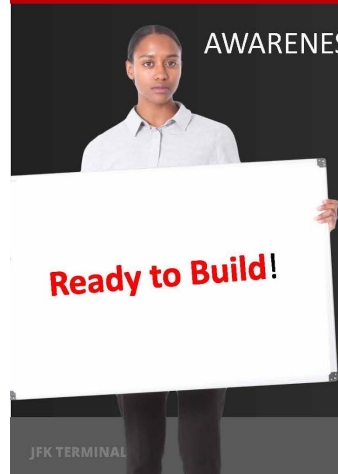
- Electric
- HVAC
- Concrete
- Masonry
- Steel

JFK T8 Prequalification Process




- Simplified Process
- Increased Virtual Technical Assistance
- New Outreach Campaign:
[Get Prequalified, Get Work](#)

A Triple 'A' Workforce Diversity Program



Ready to Build!

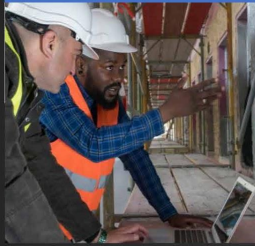
AWARENESS	ADVERTISING	ACCESS
Monthly Employment Utilization Reports (MEUR)		
Minority Skilled		26.0%
Minority Laborer		46.0%
Female Skilled		0.0%
Female Laborer		0.0%
Local Labor Force		0.0%



**The Local Business contracting and Workforce data reported by AA was erroneous and will be corrected at the next Advisory Council meeting.*

Community Outreach Program

Trade Specific Targeted Outreach



Government Partnerships



Community Partnerships



JFK TERMINAL B



AECOM SIEMENS

Current Opportunities

TAA Number: YR-8006-002 – Head House Expansion 30' Bump Out Exterior Closure and Interiors

HVAC	Electrical (1st flr)	Carpentry (1st flr)	Paint	All Finishes *	*Millwork, Terrazzo, Flooring, Feature Wall, Ornamental Metal and Glass, Signage Toilet Partitions
\$250-500K	\$1-1.5M	\$500-750K	\$100-150K	\$1.25-1.5 M	

TAA Number: YR-8006-003 – B-Concourse Expansion 60' Bump Out & Gates 18 & 20 Foundations and Structures

Piles	Slab on Deck	Concrete	Steel
\$1 – 1.5M	\$750K-1M	\$750K-1M	\$3.5 – 4M

TAA Number: YR-8006-004 – 60' B Concourse Expansion Exterior Enclosure and Interior Finishes

Doors & Hdwr	HVAC	Flooring	Plumbing	Carpentry	Painting	Millwork	Glass	Electrical	Labor
\$80-100K	\$475-600K	\$100-125K	\$100-120K	\$600-700K	\$40-60K	\$120-140K	\$60-80K	\$300-500K	\$150-250K

TAA Number: YR-8006-005 Parcel M Renovation of approximately 600,000 sq. ft. of existing airfield

Civil	Site Electric	low mast barriers, concrete, asphalt, trucking
\$25-35M	\$1.5-2.5M	

TAA Number: YR-8006-006 – C-Concourse –Gate 31&32 Up-Gauge

Demo	Site / Civil	Piles	Concrete	Steel	Masonry	Roofing	Wall panels	Interiors
\$500-750K	\$750K-1M	\$250-500K	\$500-750K	\$750K-1M	\$250-500K	\$250-500K	\$2-2.5M	\$2-2.5M

Opportunities Outlook: Q4 2020-Q1 2021

Other Opportunities

One JFK Vision

- Architecture / Engineering RFQ (Currently in solicitation)
- Public Restroom Renovation, Signage and Branding

Terminal 8 3rd Party Testing

- Material Testing and Inspection RFP-Target Market (Currently in solicitation)
- Terminal and Hardstand Construction, Fuel Pits, Paving

General Contractor RFQ (Currently in solicitation)

- AA / BA Joint Lounge
- One JFK Vision – Public Restroom, Signage and Branding

- <https://www.anewjfk.com/work-with-us/work-with-american-airlines/>

Outreach Initiatives

American Airlines will organize and host regular outreach event and seminars to inform the community of project opportunities. **To date there have been 17 outreach events since January.**

Objective of Outreach Events

- Inform them of current status of project
- Prequalify Vendors to be placed on bidders list
- Assist Vendors in navigating Potential Bidding Opportunities
- Assist firms seeking Port Authority Certification if necessary

Frequency of Events – (Due to COVID 19, Events have been virtual)

- Virtual Office Hours (Monthly)
- Virtual Outreach Events (Bi-Weekly)
- Round Table Discussions-(Monthly)
- Project Specific One on One Meetings with Vendors (Average 2 per Week)
- Late October Special Event (American Airlines/Building Trades/Port Authority)

Upcoming Events

<u>Date</u>	<u>Event</u>	<u>Time</u>
▪ Thursday, Oct. 1, 2020	RDRC - JFK Red. Office	6:00 p.m.
▪ Friday, Oct. 2, 2020	Virtual Office Hours	11:00 a.m.
▪ Monday, Oct. 12, 2020	Holt Outreach	10:00 a.m.
▪ Wed. Oct. 28, 2020**	PA – Round Table	T.B.D. (ant. 3:00 p.m.)

Special Late October Event

AMERICAN AIRLINES AND HOLT CONSTRUCTION CORPORATION
IN PARTNERSHIP WITH THE
PORT AUTHORITY OF NEW YORK AND NEW JERSEY
present

GET READY TO WORK@TERMINAL 8!

Opportunities for Everyone

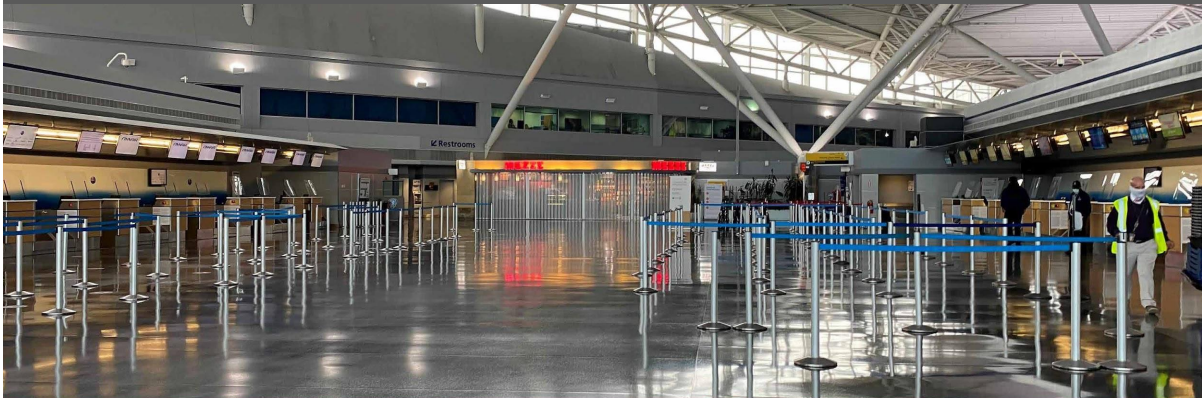
*In-Person and Re-Broadcast Launch Event,
with Interactive Public Information and
Community Engagement Microsite*

JFK TERMINAL 8

American
Airlines

Holt

AECOM SIEMENS



Phase 1: Launch Event

Connect with Us! We're Listening!



Visit our website at
www.ANewJfk.com



Email us at
jfkt8@holtcc.com



Call us at
718.643.4880

JFK TERMINAL 8

American
Airlines

Holt

AECOM SIEMENS



Contact Us

Virtual Office Hours:

Monday to Friday – 9AM - 5PM

External Affairs & Community Outreach Managers

Selvena N. Brooks-Powers &
Nantasha Williams

JFK Redevelopment Information Center

144-33 & 35 Jamaica Avenue | Jamaica, NY
(718) 244-3834

JFKRedevelopment@panynj.gov
www.ANewJFK.com

LET'S GET COUNTED!

The Census determines everything from the funding we get for public services to our state's congressional representation. Participate in the 2020 Census!

#GetCountedNY

If you haven't already, please make sure you've completed the 2020 Census. Visit [my2020Census.gov](https://my2020census.gov) and get counted today. Your count matters to our community!

Questions & Answers

Question: How can local labor force be at 0%?

Answer: (Sade/AA) I'm hesitant to give a number because there seems to be an error in our calculation. I will go back and confirm with my team but I am being told it should be above 10% but I will confirm and update the Port Authority to share with the Council.

Question: (Raza) Will you be sharing this presentation?

Answer: We typically share a summary and it will be available on www.ANewJFK.com

Question: (Ms. Karteron) I am very concerned. I do appreciate that Sade is going back to check the numbers to see if whether or not it's errors and see if there is more participation. I cannot understand how a project of this nature, that we've all been involved in from the start. This was to bring opportunity for the local community. Whether it is the local MWBE, local community participants, or local workforce. Also I am appalled. I saw 2 contractors that were participants and waiting to hear the revised numbers from the workforce. In the interest of transparency, we have not received monthly updates on the contracts on all of the projects that has been promised to us. How do we ensure we have participation from our community and get the information we have requested? I don't see anything to show how AA is working with the local consultants hired by the PA to ensure local community and MWBE participation.

Answer: We will get back regarding the labor force. I'm not sure how do we demonstrate that. We are working closely with the PA. We look at the Port Authority as very important team members. We meet regularly with the PA and I may not understand the question, but we will work to get the answers you need.

Follow Up (Ms. Karteron) I am a member of the Advisory Council and I appreciate your follow up on workforce. The other questions weren't for you. I am inquiring about the report to this committee outlining the local participation and the engagement with the consultants that were hired to ensure local participation goals are met.

Answer: (Selvena) Phillipa raised a valid point in terms of the Advisory Council Report, which I want to clarify is to be shared quarterly. We are working to put updates out on the website. Terminal Developers do communicate with our Consultants regularly. Thank you for sharing your perspective. For those of you on the call, I just want to say I encourage you to speak up so that the Terminal Developers can hear what from a community perspective what we are expecting.

Remarks: Senator Comrie: There is a sense of urgency of getting this information on the website and distributed to everyone involved. This is critical information to the community so that everyone can be aware. The process that everyone is aware of all opportunities available. I appreciate everyone for your participation. Stay safe and see everyone soon.

Answer: (Penda) We have been working with the PA. We are specifically targeting outreach as MWBEs. There hasn't been any direct Workforce meetings. That will be in the next phase. Please be a little bit more patient, we are getting that information. We are working on the numbers as our job is compliance and monitoring.

Remarks: Dr. Grant shared that we have one chance at this legacy project and we will continue to push to ensure that we have the answers and participation we need.

Remarks: Assemblywoman Hyndman gave greetings and deferred to questions

Remarks: LaToya Benjamin gave greetings on behalf of NYS Senator Sanders.

Question: Can you confirm that we have to pre-qualify with Holt and the website to do so?

Answer: (Alex) Yes, you do have to pre-qualify. Email to request a pre-qualify. Holt Construction is all over NY so once you pre-qualify with Holt, you are eligible for all our projects. Email JFKT8@holtcc.com and request a pre-qual. The whole team is here to help.

Question: Can the community receive reports from the compliance consultants with updates about the local workforce and local contract utilization?

Answer: (Nantasha) Our goal is to operate in the spirit of transparency. We will get back in touch with frequency and cadence these reports.

Summary Remarks

Dr. Grant: Thank you to everyone for your attendance and participation. We hear the voice of the community regarding reporting and the urgency of receiving this information. Stay safe and be well.