

JFK Redevelopment Program

Community Advisory Council Meeting

03.26.2021



AIR LAND RAIL SEA

Agenda

- **Welcome – Congressman Gregory W. Meeks and Borough President Donovan Richards**
- **Introductions**
- **Program Update**
- **Community Development - Workforce**
- **Community Development - L/M/WBE Participation**
- **Community Outreach Updates**
- **Terminal Developer Updates**
 - The New Terminal One**
 - American Airlines/T8**
- **Q&A**

OPENING REMARKS & PANYNJ UPDATES FROM:

JFK Redevelopment Community Advisory Council Facilitator

Dr. Stacie NC Grant

JFK Redevelopment Community Advisory Council Co-Chairs

Congressman Gregory Meeks

Queens Borough President Donovan Richards

NYS Assembly Member, Khaleel Anderson

NYC Council Member, Selvena Brooks-Powers

Senior Community Outreach Specialist, Rachelle Antoine

Director, Government & Community Relations Aviation Redevelopment - NY

Hersh Parekh

Senior External Relations Client Manager, Government & Community Relations

Stacey Gilbert

Dr. Grant welcomed everyone and thanked everyone for their attendance and participation.

Congressman Gregory Meeks shared his hopes that everyone is getting vaccinated, getting tested regularly, wearing protective masks, and staying socially distant. He welcomed newest members of our Community Advisory Council NYS Assembly Member Khaleel Anderson and NYC Council Member Selvena Brooks-Powers. He reviewed the challenges of getting a set aside for 3 Billion dollars for the Port Authority and while that was not successful, there will be a portion of the 1.9 trillion budget that was approved that will go towards aviation. With this short fall, the work continues in Albany with our Elected officials working on the NYS budget. This work is a collaborative partnership with the community and will only be successful if we all work together. The JFK Redevelopment is a model for the nation as this kind of project has never been executed in this manner. The Congressman closed with congratulating our Borough President on his work with the airport lease extension negotiations.

Borough President Donovan Richards thanked the Congressman for his leadership and partnership. He echoed that this redevelopment can be a model for what we need to do as we move forward in a post pandemic era. With the unprecedented challenges we have faced and continue to face like the 7.7 % unemployment in Queens, our SE Queens community has been hardest hit. We only gain strength when our community is united. Unity is what will get us more resources for our community. He expressed gratitude for the partnership with Congressman Meeks, the entire delegation from SE Queens, the Port Authority, Terminal Developers and Community Advisory Council. The Borough President also joined in congratulating Assembly Member Khaleel Anderson and Council Member Selvena Brooks- Powers in their new roles.

Assemblyman Khaleel Anderson expressed his excitement in joining the Community Advisory Council and being at the table to represent the constituents of the 31st District alongside Council Member Selvena Brooks-Powers. Councilmember Anderson also underscored the importance of getting vaccinated and shared locations are open in Far Rockaway.

Council Member Selvena Brooks-Powers gave greetings in her new capacity and expressed gratitude to home and excited to still be involved in the Redevelopment in her new capacity.

Rachelle Antoine, Sr. Community Outreach Specialist greeted the Council for the first time in this role. As a longtime SE Queens resident, she brings her experience from the NYS Assemblyman Clyde Vanel's Office, her work with the Greater Jamaica Development Corporations and graduate of York College. She expressed the importance of this project bringing resources to business, organizations and non-profits and strengthening the local workforce opportunities. She expressed her excitement for the opportunity to work with the Council. Rachelle can be contacted directly at raantoine@panynj.gov.

Hersh Parekh welcomed newly elected officials and continued commitment of the Port Authority to making this project a success. It was a year ago since we last gathered in person at the Rochdale Community Center not knowing what we would be facing with COVID-19. The Community Outreach team is getting back to full strength and looking forward to the project getting back underway with hopeful anticipation of meeting in person once again. The Emergency extension on the airport lease for 10 years by Mayor de Blasio will provide the Port Authority the opportunity to continue negotiations, restructure and prepare for hopefully restarting the development projects towards the end of the year. Approx. 400- 500 Million received for airports through formula funding, instead of the 3 Billion needed to make-up for the lost revenue due to the pandemic.

Stacey Gilbert shared opportunities available for the PANYNJ Leadership Fellows Program, Summer Internship Program and PA Apprenticeship: Construction Skills

Andre Apparicio discussed some success and the opportunities available from the Office of Second Chance Employment. Ron Murtha from HNTB shared details on the local M/WBE capacity in the database. Anthony Peterson gave updates on behalf of the Compliance Consultants. Natasha Turner gave updates on Community Outreach and we received updates from The New Terminal One and American Airlines Terminal 8.

JFKR Program Update

The JFK Redevelopment Program remains on pause due to the impacts from Covid-19. At this time, only the American Airlines/Terminal 8 Expansion project is underway.

We had anticipated starting construction on the NTO T1, Delta T4, and JMP T6 terminal projects last year. But those the projects have been delayed due to impacts from Covid-19. We currently do not have an update on timing, though we continue to work with terminal developers to find a way to advance the projects.

Recent Updates

1. Airport Lease with NYC – Announcement on February 22nd by Mayor de Blasio, Congressman Meeks, & Borough President Richards
2. Federal Relief Funding

PANYNJ Leadership Fellows Program



The Port Authority of New York and New Jersey's Leadership Fellows Program is a distinguished program for graduate students who received their degree in Fall 2020 or expect to receive it in Spring 2021. It is a two-year rotational program that offers on-the-job experience in approximately four different business functions. Leadership Fellows have an opportunity to explore many different areas such as operations, finance, transportation, human resources, etc.

After successful completion of the program, Leadership Fellows will be considered for key positions in areas such as policy analysis, finance, capital programs, or related business functions.

ACCEPTING APPLICATIONS NOW! Visit www.jointheportauthority.com.

Deadline to submit application is APRIL 18, 2021.

PANYNJ Summer Internship Program



The Aviation Department is looking for a paid summer intern to join its team in the JFK Redevelopment Program - Community & Compliance Support! Specific responsibilities include but are not limited to:

- Support community outreach and stakeholder compliance. The intern will work with multiple stakeholders including GOCOR and D&I in reviewing documentation, preparing summary reports, coordinating with external parties and attending virtual stakeholder meetings.
- Key areas of interest: community relations, contract and labor M/WBE compliance, capacity building and participation in major regional infrastructure programs.

Other internship opportunities also available across the agency.

Start Date: June 3, 2021. Full-time, virtual internship lasting 12 weeks.

ACCEPTING APPLICATIONS NOW! Visit www.jointheportauthority.com.

Deadline to submit application is APRIL 9, 2021.

10



Pre-Apprenticeship: Construction Skills



Construction Skills is dedicated to preparing a trained and skilled workforce from communities throughout the five boroughs of New York City for careers in the unionized construction industry.

Since 2001, Construction Skills has worked to contribute to a stronger, more diverse workforce with 90% of participants representing minority communities from all five boroughs.

Unionized apprenticeship offers training, education, certification, high wages, health benefits, and retirement security paid for by union contractors, while simultaneously being employed on construction projects throughout New York City. For more information, visit: www.constructionskills.org/

Upcoming Program Dates: Tuesday, June 1st to Friday, July 2nd

ACCEPTING APPLICATIONS NOW! First step is to register with NYC Workforce1 Career Center

www.careerdiscovery.cityofnewyork.us/train/construction-worker/.



Office of Second Chance Employment



- 19 candidates referred by OSCE hired by Bombardier for Spotter positions related to NYSDOT Van Wyck Expressway Project
- Paid training began earlier this week on March 22nd; Jobs to begin on April 1st. Pay rate: \$24.13/hr.
- Positions scheduled to last a minimum of 9 months
- 10 candidates referred by OSCE CBO partners were hired
- Interviewing for 7 additional positions that will come online in early April, with more openings expected in May

12



Early Works Projects

- The early works projects have independent utility and are necessary to improve the JFK. They would also support JFK Redevelopment as enabling projects.
- The portfolio is made up of more than 20 projects, including Airside, Landside, and Facility improvements.
- Ahead of the major redevelopment program elements, these projects are anticipated to commence Q2 2021 and continue on a rolling schedule.

Early Works Projects

Work Order - Range A

- Hangar 12 Pavement Improvement
- Building 111 Pedestrian Access

Work Order - Range B

- Van Wyck Expressway (VWE) Recirculation Improvements
- Hangar 15 & 16 Asbestos Abatement, Demolition and Sitework
- West Hardstand Hangar 17 "Suitcase" Paving
- Building 123 New Pavement
- Building 121/122 Demolition
- Building 95 Demolition
- Bergen at 130th Place Intersection Improvements

Emphasis on using Local M/WBE: up to \$1.0M
Range A: \$0 – \$2.5M
Range B: \$2.5 – \$25M
Range C: \$25+M

Work Order - Range C

- Utility Construction from KIAC to CTA Infield – Work Order 112
- Utility Construction from CTA Infield to Terminal One Area - Work Order 113
- West Hardstand Hangar 15, 16, 17, and 19 Paving

Multiple projects using procurement strategy to emphasize use of local M/WBE firms

- Building 111
- Building 83 and Building 86 Drainage and Pavement Improvements

AWARDED CONTRACT

- Early Action Traffic Systems (EATS) - future work orders still anticipated, where Prime encouraged to engage Local M/WBEs

15



Early Works – Local Emphasis Program

Procurement strategy to emphasize use of Local M/WBE firms (up to \$1 million).

- Engagement events, training, and educational opportunities for development of local M/WBEs, geared specifically towards local Tier 1 and Tier 2 businesses.
- Continued engagement with local M/WBEs to develop and continue to build a list of qualified and available firms that we intend to direct solicit in order to maximize opportunities and encourage competition amongst local firms.
- Continued and increased focus on local subcontractor/Prime contractor engagement and awareness to maximize local M/WBE and SDVOB subcontractor utilization to meet PA goals.
- Bid packaging consideration to allow for maximum participation from qualified, available local M/WBEs while continuing to meet the program goals.
- Barriers considered, as a result of ongoing feedback from contracting community –
 - Bonding requirements waived for contracts under \$1M
 - Insurance requirements right sized based on risk profile for specific project
 - Experience requirements for firms and staff right sized based on project complexity, size and type
 - Prompt payment contract provisions included
- Bid schedules are designed to allow for information and education – 3 to 5 weeks, as may be extended on a case-by-case basis.

16



Local M/WBE Capacity Analysis

- Initial Database:
 - 828 M/WBE/SBE/DBE Certified Businesses identified in Tier 1 Targeted Zip Codes (Southeast Queens, Western Nassau, Rockaways) and Tier 2 Borough of Queens
 - Sources: PA, MTA, NYC and NYS MBE/MWBE/SBE/DBE Certified Business Directories
- Updated Database:
 - Sorted businesses into 11 different trade categories based on anticipated Early Works projects, based on Certified Description/ Commodity Codes

Contractor Summary				
Code	Trade	Count*	Responded*	Interested in PA Work*
CI	Construction Management/Inspection Services	14	9	9
E	Electrical	39	26	24
M	Mechanical	48	31	29
P	Plumbing	26	18	17
F	Fire Alarm/ Fire Protection	15	12	9
S	Structural	30	15	13
D	General/ Interior/ Drywall/Millwork	100	54	47
DH	Demo & Hauling	11	8	8
CS	Civil & Sitework	28	14	12
CM	Concrete & Mason	26	18	18
RW	Roofing & Waterproofing	22	16	15

- Total Firms Called: 325

- 152 from Tier 1
- 173 from Tier 2

- Firms Responded- 174 (54%)

- Firms interested in PA Work- 153 (47%)

*Some firms provide multiple services and have overlapping trade codes. Hence, the counts are higher than the actual number of firms called/reached

Project Readiness Boot Camp

To help Local M/WBEs prepare for the Early Works projects, the Port Authority will partner with a local consultant to develop and facilitate a Project Readiness Boot Camp that would 1) help businesses build capacity and 2) prepare participants to bid on contracting opportunities.

- Facilitated by R.F. Wilkins Consultants. Intensive 3-day program, with 25-30 participants per cohort.
- Example of core subject areas that could be covered are listed below. Each session will be taught by SMEs from the Port Authority and other external, third-party partners:
 - Doing Business with the Port Authority
 - Procurement 101
 - RFP Readiness
 - Effective Cost Estimation
 - Sourcing Access to Capital
 - Understanding Contract Language
 - Daily Progress, Equipment, and Labor Reports
 - Security Requirements
 - Safety Provisions
 - Closing out projects, submittals, payments, extra work, net cost, and penalties
 - Union/prevaling wages
- First cohort expected to launch during the week of April 19th. Application will be posted on www.anewjfk.com soon.

Please help us spread the word!

18



Janitorial Maintenance SBE Program

The Port Authority prequalifies Pre-Certified Small Business Enterprises in the Janitorial Maintenance ("JMSBE") category to submit bids and/or proposals for contracts to provide general cleaning and janitorial services at Port Authority facilities, which are scheduled for bid or proposal solicitation on a JMSBE set-aside basis.

1. SBE certification - race and gender neutral. Firm needs to be based in NY/NJ, year(s) in business and meets SBA threshold standard for industry.
 2. JMSBE prequalification - for more information, or to get pre-qualified please visit www.panynj.gov/port-authority/en/business-opportunities/Vendor-Resources.html.
- If you have any questions about JMSBE Program: Marilyn Feliz, mfeliz@panynj.gov.

Note: Multi-million-dollar contract for cleaning services to include machine sweeping of parking lots & garages, and snow removal services at JFK Airport anticipated in Q4 2021. Only businesses on JMSBE list will be invited to submit a bid.

M/WBE TOUCHPOINT ACTIVITIES & RESULTS

As a result of the compliance consultants' outreach hours on Mondays as well as in-person and virtual events, such as local events/workshops, industry conferences, roundtable discussions, business card exchanges, etc., we have engaged approximately 750 firms for the JFK Redevelopment Program.

Most of these firms are certified with ESD and/or the PANYNJ, while those needing certification have been assisted through the process, referred to the PANYNJ for certification assistance, or have been extended the invitation to participate in a PANYNJ certification workshop.



TOUCHPOINT RESULTS

The following are some highlights from our touchpoint activities with M/WBEs engaged for the JFK Redevelopment Program:

- Approximately 200 of the 750 firms that have been engaged are located within tier 1 and 50 are located within tier 2.
- 95 M/WBEs have been vetted and were introduced to the Developers on the project; we know of a few that have received contracts but cannot determine if it was through our introductions or by other means.
- Approximately 25 firms have been assisted through the certification process and referred to PANYNJ staff to assist in expediting their certifications.
- Several M/WBEs were introduced to other projects we are involved with.
- Several M/WBEs have been assisted on how to proceed with pre-qualification requirements, such as capability statements, company profiles, etc.
- Several lists have been provided of M/WBEs specializing in various trades, goods, and services to assist the Developers in identifying qualified Local firms to consider for participation.
- We also oversee, review and verify the Developers reporting data on M/WBEs and Locals, as well as workforce.

Virtual Webinars

Career/Workforce Development and Business Development

- 8 webinars focused on Career/Workforce Development, including partnerships with CAO and The Fortune Society
- 2 webinars focused on Business Development, including collaboration with TruFund and LGA & EWR Redevelopment Outreach Teams
- 3 Fireside Chats for Women's History Month: Women entrepreneurs joined to participate in inspiring discussions led by successful WBEs about what it takes to start a business, challenges along the way and the importance of building relationships for support.



24

Contact Us

Virtual Office Hours:

Monday to Friday – 9AM - 5PM
(718) 244-3834
JFKRedevelopment@panynj.gov
www.ANewJFK.com

JFK Redevelopment Information Center
144-33 & 35 Jamaica Avenue | Jamaica, NY
(closed due to health & safety precautions until further notice)

Partner Virtual Office Hours

Organization	Days	Times
M/WBE Compliance Consultants Support	Every Monday	12PM-4PM
The New Terminal One	Monday-Friday	By appointment, new online booking system
JFK Millennium Partners	1 st and 3 rd Wednesday	1PM-5PM
American Airlines	1 st Fridays	11AM-1PM
Council for Airport Opportunity (CAO)	3 rd Thursdays	3PM-6PM

In addition to Partner Hours, additional office hours and appointments can be made with Terminal Developers

26

Terminal Developer Updates



AIR LAND RAIL SEA

The New Terminal One at JFK: Updates

Although on pause due to COVID-19; The New Terminal One at JFK ("NTO") project is preparing for future construction with an ongoing contractor procurement, continued community engagement, and identification of local and MWBE firms

Contractor Procurement

- NTO issued a Request for Proposals on March 9th to selected contractors
- Selected firm(s) will advance schedule, deliver project on budget and drive our local, workforce and MWBE objectives

Community Engagement

- Thomas White Jr. Foundation – Community Food Distribution, Feb 4
- The Council for Black Business Enterprises – Access To Capital, Bridging the Gap, Feb 24
- New York State Association of Black, Puerto Rican Hispanic & Asian Legislators Virtual Conference, Feb 25-28
- Allen AME Neighborhood Preservation and Development Corporation Job Fair, Mar 11
- The Women Builder's Council Virtual Leadership Forum, Mar 11
- Rockaway Development & Revitalization Corporation Streetwise MBA Program, Mar 23



Recent NTO Capacity Building Sessions

- Enhancing Your Capability Statement, Dec 15
Local firms: [147th St. Homes](#), [DARP Consulting](#), [Sun General Construction](#)
- Marketing Your Business, Jan 12
Local firms: [A.B. Engineering](#), [Kemet Industries](#), [Tulson Enterprise Corporation](#)
- Structural Steel Program, Jan 26
- Understanding Insurance, Feb 9
- M/W/LBE Information Session, Mar 9

Upcoming M/W/LBE Information Sessions

- Apr 13, May 11, Jun 8
- Daily Virtual Office Hours from 9:00am to 5:00pm

THE NEW TERMINAL ONE
JFK INTERNATIONAL AIRPORT

29

JFK TERMINAL 8

American Airlines Holt AECOM SIEMENS



Terminal 8 JFK Redevelopment Program
Quarterly Meeting - JFKR Community Advisory Council
March 26, 2021

AGENDA

- Program Budget & Schedule Update
- Report on Opportunities for MWBEs, LBEs
- Success Story
- Workforce
- Outreach
- Looking Ahead: Q2 2021 Opportunities

PROGRAM BUDGET

ITEM	BREAKDOWN	FUNDING
Terminal 8:	Construction	\$255,418,137
Joint Lounge/Check-In:		\$63,648,236
One JFK Vision (\$25M):	Public Restrooms	\$25,000,000
	CCTV	
	Signage	
	Other	
	TOTAL	\$344,066,373

JFK TERMINAL 8

33

PROGRAM SCHEDULE - UPDATE



60' Bump-Out



Interior work



30' Bump-Out

- 60 Bump-Out foundation work underway
- 30' Bump-Out: Structure, Deck & Enclosure Complete
- Baggage Handling System: Phase 1 40% complete
- Level 4 Office Works: 30% complete
- AA/BA Joint Lounge: Design complete pending PA approval
- One JFK Vision – Design in progress
- Interior bids to be released Q2 - for more M/W/LBE participation

JFK TERMINAL 8

34

MBE & WBE PARTICIPATION SUMMARY

(AS OF FEBRUARY 28, 2021)

	Total Awarded To Date	Category			
		MBE	% of Total Award	WBE	% of Total Award
Q3 2020	\$35.9M	\$10M	27.8%	\$2.7M	7.5%
Q4 2020	\$104.5M	\$16.5M	15.8%	\$24M	22.9%
Q1 2021*	\$189.6M	\$22.1M	11.7%	\$36.9M	19.5%

*Significant MBE participation anticipated in upcoming interior and Parcel M awards which are not included in above numbers.

Project is following the approved Comprehensive Plan and is on track to meeting plan goals.

JFK TERMINAL 8

35

(AS OF FEBRUARY 28, 2021)

Tier 1 (Target Zip Codes)

- Jamaica Blue Print: Drawing Reproduction
- Jetway Security
- Royal Waste
- RCGA: One JFK Vision A&E
- Deutscher & Daughter: Doors & Hardware
- HRF Environmental
- Red Eye Aviation
- KVC Services
- A&V Steel
- Current Fire Protection

Location

- Jamaica, NY
- Valley Stream, NY
- Jamaica, NY
- Jamaica, NY
- Jamaica, NY
- Jamaica, NY
- Jamaica, NY
- Valley Stream, NY
- Richmond Hill, NY
- Cambria Heights, NY

Contract Value/PO Value

- \$43,156+
- \$190,671+
- \$23,989+
- \$360,534
- \$263,119
- \$70,000 (pending award)
- \$364,571 (pending award)
- \$1,678,968
- \$810,000 (pending award)
- \$645,000

Sub-total Tier 1 \$4,450,008

Tier 2 (Borough of Queens)

- Stratford Group: Project Management
- Elit NY Design: Millwork
- Elite Demolition: Demolition
- All Air: HVAC
- Carter, Milchman & Frank, Inc: Material Supply
- US Aerial: Equipment Rental
- Bay Crane: Hoisting
- Unity Electric: Electrical
- Fine Painting: Painting & Acoustical Panels
- PAL Environmental Safety Corp

- Flushing, NY
- Ridgewood, NY
- Maspeth, NY
- Long Island City, NY
- Long Island City, NY
- Long Island City, NY
- Long Island City, NY
- Flushing, NY
- Ridgewood, NY
- Long Island City, NY

- \$173,926
- \$122,400
- \$375,000
- \$859,000
- \$38,048+
- \$20,000+
- \$15,000
- \$1,875,510
- \$115,500
- \$156,500

Sub-Total Tier 2 \$ 3,750,884

Total Tiers 1 + 2 Awards = \$8,200,892 (including pending awards)

JFK TERMINAL 8

36

Baggage Handling System

Technical requirements of the Baggage Handling System (BHS) limit the number qualified vendors

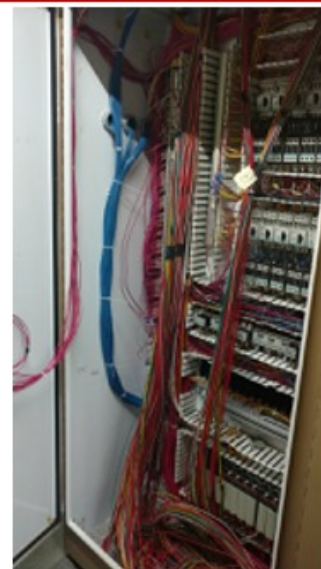
An assessment of ancillary services allowed for significant increase in local participation

Outcomes:

- \$2,952,273 awarded to LBE firms
 - \$2,832,273 Tier 1
 - \$120,000 Tier 2
- \$19,326,446 awarded to WBE
- \$14,339,654 awarded to MBE



JFK TERMINAL 8



38

WORKFORCE PARTICIPATION – MINORITY & FEMALE

(As of February 28th, 2021)

HOURS

Total Skilled
63,851

Total Laborer
11,518

HOURS

- Minority Skilled: 22,375 (35.0%)
- Minority Laborer: 9,956 (86.4%)
- Female Skilled: 899 (1.4%)
- Female Laborers: 429 (3.7%)

Partnerships to increase female and minority skilled participation

- Nontraditional Employment for Women
- Helmets to Hardhats
- Pathway to Apprenticeship
- Edward J Malloy Construction Skills
- Crescent Consulting, Port Authority consultant

JFK TERMINAL 8

40

WORKFORCE PARTICIPATION – LOCAL TRADE/LABOR

As of February 28, 2021

HOURS

Total Skilled
18,766

Total Laborer
3,538

HOURS

- Tier 1 Skilled: 1,341 (7.1%)
- Tier 1 Laborer: 925 (26.1%)
- Tier 2 Skilled: 216 (1.1%)
- Tier 2 Laborers: 232 (6.5%)

Trade/Labor – All Contractors*	Tier	# Employees/ Local Q4	Percentage of Trade/Labor Workforce Q4 2020	# Employees/ Local Q1 2021	Current Percentage of Trade/Labor Workforce Q4 2020
Target Zip Codes	1	32	14%	32	12%
Borough of Queens	2	16	7%	17	6%
Undetermined		9	4%	9	3%
Total Trade/Labor Workforce		231		273	

OUTREACH - INITIATIVES

American Airlines will continue to organize and host regular outreach event and seminars to inform the community of project opportunities. **To date there have been 55+ outreach events since January 2020 with over 16 taking place over the last quarter.**

Objective of Outreach Events

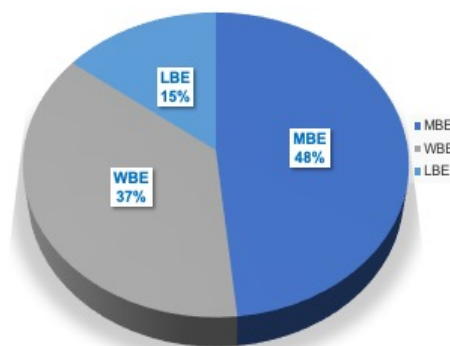
- Inform MWBEs and LBEs of the current status of project
- Prequalify New Vendors to be placed on bidders list
- Assist Vendors in navigating Potential Bidding Opportunities
- Assist firms seeking Port Authority Certification if necessary
- Provide informational and learning sessions to the community

Frequency of Events – (Due to COVID 19, Events have been virtual)

- Virtual Office Hours (Monthly)
- Virtual Outreach Events (Weekly/Opportunity Fridays)
- Round Table Discussions-(Monthly with the PA lead)
- Project Specific One on One Meetings with Vendors (Average 2 per Week)

OUTREACH – INITIATIVES-Participant Data

Outreach Activity Q1 2021		
Number of Events	Registrants	Attendees
8	1,927	1,194



**LBE's are cumulative of Tier 1 & 2

JFK TERMINAL 8

44

NEW! Interactive Platform - Networking and Technical Assistance



JFK TERMINAL 8

45

Opportunity Fridays

MARCH

12:00 p.m. - 1:00 p.m.	Friday, March 5, 2021	Workforce	Find Opportunities in the Building Trades: Construction Skills
12:00 p.m. - 1:00 p.m.	Friday, March 12, 2021	Workforce	Find Opportunities in the Building Trades: Helmets to Hardhats
12:00 p.m. - 1:00 p.m.	Friday, March 19, 2021	MWBEs/LBEs	American Airlines JFK Terminal 8 Expansion Project Update
12:00 p.m. - 1:00 p.m.	Friday, March 26, 2021	MWBEs/LBEs	Are You Covered? What You Need to Know About Your Insurance Policy

APRIL

12:00 p.m. - 1:00 p.m.	Friday, April 2, 2021	N/A	Spring Recess: No Session
12:00 p.m. - 1:00 p.m.	Friday, April 9, 2021	MWBE/LBE	Get Pre-Qualified
12:00 p.m. - 1:00 p.m.	Friday, April 16, 2021	Workforce	Find Opportunities in the Build Trades: Pathways 2 Apprenticeship (P2A)
12:00 p.m. - 1:00 p.m.	Friday, April 23, 2021	MWBEs/LBEs	Opportunity Friday Office Hours: Meet the T8 Team
12:00 p.m. - 1:00 p.m.	Friday, April 30, 2021	MWBEs/LBEs	Opportunity Friday Office Hours: Meet the Subs

OPPORTUNITIES

**TAA Number: YR-8006-002 – Head House Expansion 30'
30' Bump Out Exterior Closure and Interiors
(Release to bid April 2021)**

	Estimated Ranges
HVAC	\$500K-\$750K
Electrical (1 st Floor Scope)	\$1-1.5M
Painting	\$100-150K
All Finishes *	\$1.25-1.5M
Total	\$2.85 MM - \$3.9 MM

****All Finishes encompasses the following scopes of work; Millwork, Terrazzo, Flooring, Feature Wall, Ornamental Metal and Glass, Signage and Toilet Partitions***

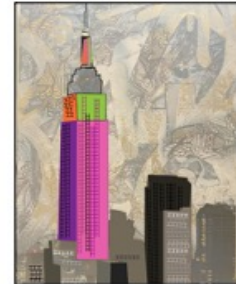
Visit www.anewjfk.com or email jfkT8@holtcc.com for latest information.

JFK TERMINAL 8

46

ONE JFK VISION – RESTROOMS & SIGNAGE

- Restroom Scope (for all 15 public facing restrooms):
 - Refresh of 13 restrooms with new fixtures and finishes
 - Expansion of 1 restroom to new standards
 - Provide design specifications for two restrooms included in T8 Expansion project
- Targeting scope approval in mid-April and construction start in August
- **Community Outreach**
 - Solicitation find a local designer/illustrator to partner with the architect to develop interior graphics



JFK TERMINAL 8

49



While program remains on pause, we are optimistic that we can move forward later this year so please continue spreading the word, especially to construction businesses who may be eligible to participate bid on upcoming contracts.

There was a request for no Friday meetings. The challenge is accommodating the schedules of our Elected Officials, but we will do our best to keep this in mind.

Philippa Kateron expressed after being very vocal at the last meeting with concerns about the data, she was very impressed by professional presentation of this meeting and quite heartened.