

A New JFK: JFK Redevelopment Community Advisory Council Meeting

March 5, 2020



Rochdale Community Center

JFK Redevelopment – General Advisory Council Co-Chairs
Congressman Gregory Meeks
Queens Borough President Sharon Lee

INTRODUCTORY REMARKS

Dr. Grant welcomed the audience, introduced key stakeholders and gave an overview of the agenda and acknowledgements of the Rochdale Village Community Center Board of Directors as the meeting hosts and caterers for the meeting; The Nourish Spot and The Door Restaurant.



Agenda

- **Welcome & Opening Remarks:**
Congressman Gregory Meeks & Borough President Sharon Lee
- **Redevelopment Program Updates**
- **Van Wyck Expressway Off-Airport Traffic Presentation (NYSDOT)**
- **Community, Local Business, & M/WBE Outreach**
- **Community Development Initiatives**
- **Committee Updates**
- **Terminal Project Updates**
 - **American Airlines/T8**
 - **JFK Millennium Partners**
 - **Delta/JFKIAT (T4)**
 - **The New Terminal One**
- **Q&A**

Hersh Parekh, Director of Government & Community Relations for Aviation at the Port Authority of NY & NJ acknowledged Elected Officials, members of the JFKR Advisory Council and representation for The Port Authority of NY & NJ.

PANYNJ UPDATES

Selvena Brooks-Powers, Manager External Affairs and Community Outreach, JFK Redevelopment Program greeted attendees and provided Redevelopment Program updates since prior meeting and upcoming events. Since the 2019 Advisory Council Meeting, Terminal 8, which is American Airlines has broken ground and also announced the term for lease agreement which is the Delta consortium with JFKIAT. The EA process is under way and we look forward to the JLC Millennial partnership to be finalized.

An Environmental Assessment is underway, we recently held a series of community information sessions. We actually held four across the targeted communities, which includes parts of Long Island, southeast Queens, southwest Queens and the Rockaways. Out of that we received, one comment by an individual and we also received four letters that were submitted electronically. This week, the final EA, which is conclusive of the responses by the Port Authority in addition to the public comment, was submitted to the FAA, for the determination and so the next step is that we are awaiting FAA's decision within the next few weeks.

Last year, Governor Cuomo announced to advance the JFK redevelopment by identifying a construction management partner, responses were due late last year, so we are pleased to announce that, we have a joint venture that has been selected and just so that you have an idea, of what their scope of work is, you are going to see that up on the slide.



Environmental Assessment Update

The JFK Redevelopment Draft Environmental Assessment document was made available to the public from December 20, 2019 to February 7, 2020.

- Port Authority held four public information sessions to inform the public about the project and associated NEPA analysis: January 21st, 22nd, 23rd and 29th
- Port Authority received one comment by an individual at one of the public information sessions and four letters were submitted electronically by either individuals or on behalf of an organization
- Final EA, inclusive of the responses to the public comments, was submitted to the FAA this week for NEPA determination

Next Step: Anticipate receiving FAA's decision within the next few weeks.



Construction Management Partner



RFP Released by PA Solicits Construction Management Firm to Provide Construction Oversight during JFK Airport Redevelopment. **Responses were due November 6, 2019.**

6



Expert Professional CM Partner & Related Technical Services

Scope of Work

- Constructability and General Engineering Review
- Schedule Development and Monitoring
- Construction Inspection Services
- Communications Monitoring and Record Keeping
- Addressing Environmental Issues and Reporting
- Performance of Safety Auditing and Related Services
- Coordination of Airport Operations and Operational Readiness Airport Transfer Activities
- Coordination with Utility Companies and Others
- Progress Reports





Expert Professional CM Partner & Related Technical Services

Leverage New & Existing Relationships

- The Velez Organization Providing Diversity Oversight
- Committed to 20% MBE & 10% WBE Participation
- Active Engagement in Meet & Greet Events
- ACE Mentoring Leadership



Project and Contract Requirements

- Resident Engineers
- Assistant Resident Engineers
 - Licensed Engineers
 - NCIT Certified
 - Capable of Estimating and Scheduling
- NCIT Certified Construction Inspectors



We have community meetings preparing a lot in terms of traffic, mitigation, the community wanting to understand what's going on, and so as a part of the Governor's vision, we all know that the expansion of the Van Wyck Expressway is a part of that. While that's being handled by separate agencies, the New York State Department of Transportation who is also here today to speak about that, we went into a presentation in terms of the on airport traffic management as well the off airport traffic plans as well. Additionally, we are working very closely with our partners in New York State Department of Transportation, to make sure that this vision is fulfilled and also to be able to address any concerns that come from the community. Jim Heitman and Robert Adams with the New York State Department of Transportation will highlight additional details.

Jim Heitman, the Assistant Director for Port Authority Development in the Aviation Department shared the following highlights:

I have been working on this program for three years now with our development partners, about traffic management

Every airport is different. We try to learn from our experiences at the other airports within our district, but everyone is different, and we first look at JFK - how it's different from the development work that we are doing at LaGuardia and the development work that we are doing out at Newark Airport.

The biggest advantages:

1. The location of the structure is deep within the airport, so you see the central terminal area, there is a lot of distance that separates where the majority of the construction is away from the rest of the adjacent community.

2. The second big advantage that we have is JFK's air train and having that rail access into the airport

Relative to the other two airports, even though all of our airports are relatively small for the amount of traffic that we put through, it is the biggest of our three. Using that real estate that we have, what we focused on, was trying to make sure that as much of the construction activities that would happen, would happen on the airport itself, to limit how much traffic had to go onto and off of the airport property. We have construction, state lay-down areas, we have, a concrete plant that could be built so that we don't have concrete trucks coming on and off the airports.

There will be a lot of parking. We work with the developers to set up centralized parking for the construction workers and then we could bus them to and from the work sites using low admissions bussing and setting up location of all of our management teams so that we could coordinate the activities reacting in real time to any situations that come up

We will leverage a lot of the lessons learned and experience that we got from lawyers where traffic management was such a challenge. Through that effort; you know, there are the primary advantages that contract the parking with the bussing.

In addition to that, the development leases and our partners, all of the contract employees, no parking, communications community, and by providing the capacity and also encouraging the use of mass transit, air train, and buses to get to the airport.

That's all getting out in front of that and planning that will limit any adverse impacts on the community. Having those constructions staging lay down areas so that we bring materials and you are going to from remote on-airport facilities into the construction areas. We are always trying to learn lessons from our past experiences, and one of the things that they nearly perfected at LaGuardia at this point, is the use of airport operation centers.

The idea is to have real-time monitoring on different systems and reacting to that in a coordinated way with our airport operations, TA Police, and our PA Development staff that responds when we react to situations in real-time. Getting out in front of that over the past couple of years, the metropolis and it's team having been working on early deployment of different technology, cameras, sensors, coordinating, and getting all of these types of inputs into a central location and then having the ability from that airport operation center to communicate out and react and dispatch things like, build up the towing capabilities to take care of broken down vehicles.

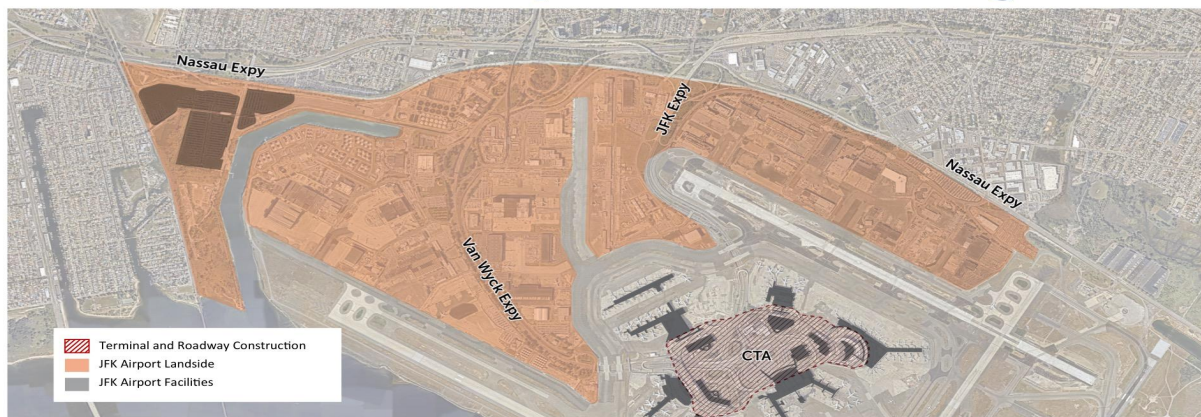
Dispatching DAPD to assist with any kind of traffic conditions, and also using technology variables to sign on to and redirect the travelling public to stay away from areas where there might be a built up of traffic and take advantage of different alternatives that we've put in place. All of that to manage this construction to get to what in the end's sake is going to be a real big huge advantage compared to what we are looking at today.

Today we have five different loops that support different terminals throughout the area. We are able to bring that down to three loops under this effort and create a ground transportation center in the south that connects the terminals T1 and T2 to provide an airport traveler where early travelers enjoy green space along with the many employees that work at the airport. It eliminates a lot of mergers. it eliminates a lot of traffic signals. It's very adaptable to react to when you think about it wasn't long ago when we didn't have for-hire vehicles.

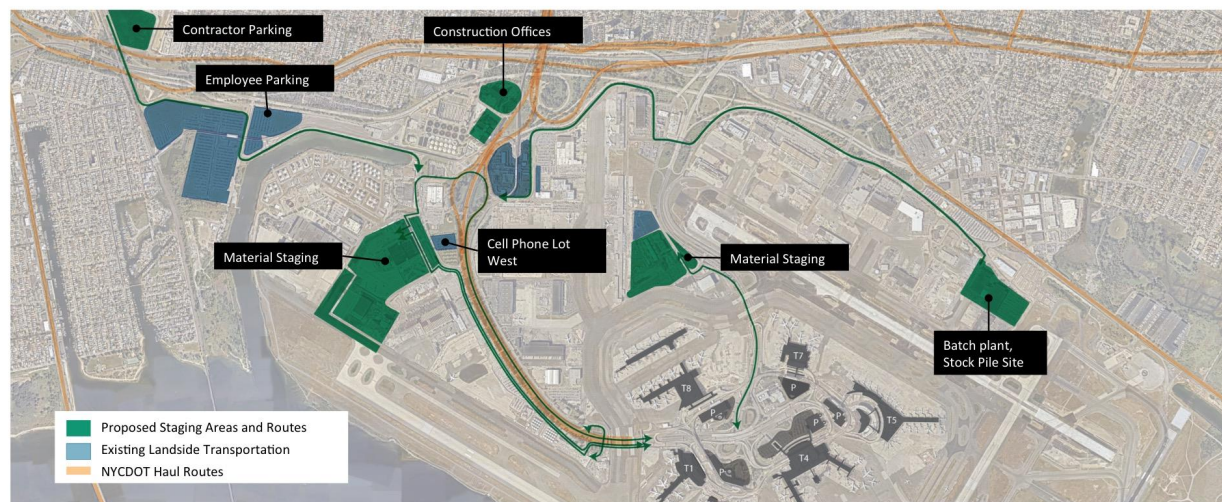
How do you move about that kind of changes overtime this is a very resilient design to allow us to adapt with whatever comes our way, in the future, and it also allows for what we see in the future having systems going from 5 to 3 to the vision of having two loops is a very clear way-finding for the traffic travelling public.

We are investing a lot of money in technology so that could be done in real-time. The new airport model as a building retaining that airport operation center to manage day-to-day operations at the airport so that we could react in real-time and keep the most efficient operation on a day-to-day basis.

On-Airport Traffic Management



JFK Redevelopment Construction Logistics

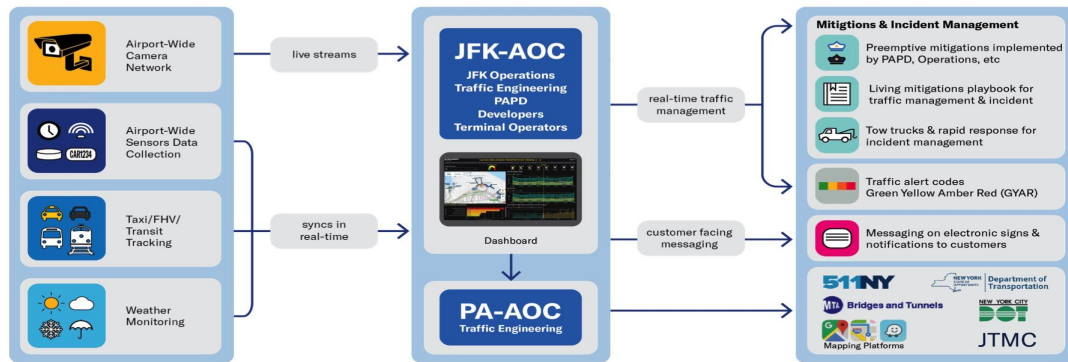


LGA Airport Operations Center (LGA-AOC)



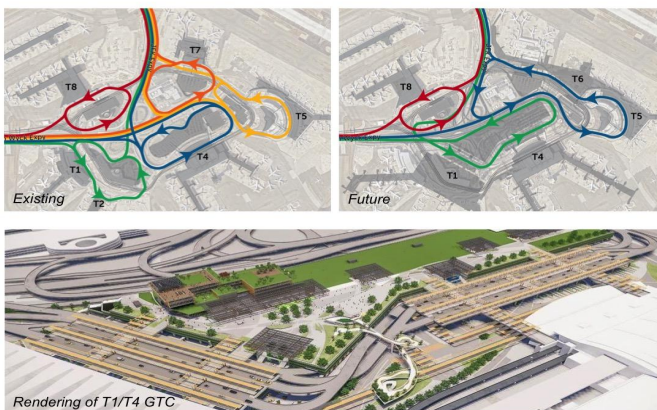
- Global best practice; co-located operation with all airport stakeholders
- Real-time, active traffic management
- Coordinated incident response
- Predictive data analytics support situational awareness and mitigations

JFK Airport Operations Center (JFK-AOC)



14

Future JFK Roadways



Roadway Simplification

- Existing – 5 Loops
- 2025 – 3 Loops

Reduced Number of:

- Merges and Decision Points
- Traffic Signals
- Traffic Crashes

Flexible & Adaptable Design

- Adaptable to accommodate future trends and modal shifts
- Potential for 2 loops in the future

Transportation Technologies Deployment

- Seamless data integration

15

Rob Adams, Director Supervisor for New York State Department of Transportation Van Wyck Expressway shared the following highlights:

We have seen some remnants of the state of the airport, unfortunately, primary access to this typically looks like this, and that's the Van Wyck Expressway.

The New York State Department of Transportation has initiated it's progressing project that will improve vehicular access to JFK and from JFK airport. For the purposes of the project, again, is to improve access to and from JFK airport within the segment of the Van Wyck Expressway between the Kew Garden Exchange and the airport.

It will also provide access addressing the operational and geometrical deficiencies within that corridor by that we are focusing on the entrance and exit ramps on the expressway. For example there are a number of locations where the entrance and exits on the Van Wyck are too close together, so the traffic that's trying to enter the expressway or trying to exit the expressway create a bottling that affects not only main line Van Wyck traffic, but also the service roads, and the local streets.

There are some examples where exit ramps are too close to the intersections. We need to shift those back, and one of the other objectives of the project is to address some of the structures that are approaching 60 years.

The project will consist of constructing or implementing HOV lanes in each direction and it's represented by the photo to the right the photo to the left is a photo standing looking south of Hillside Avenue, Van Wyck expressway, the one on the right shows the implementation of the HOV lane in each direction within the entrance. This will be created by lining of the Van Wyck Expressway within service roads. It widens contained within the service road of the expressway. The HOV lane, HOV two plus meaning passenger two or more occupants, or taxis for hire vehicles will be allowed in the HOV lane.

The project will also address those ramp connections and reconfiguring when you have ramps that are too close together we will shift them and shift them back so that the project will consist of that as well as addressing 22 existing prejudices and building one bridge, so the lane you see there is looking onward from the Long Island Railroad to the Long Island Expressway and there is an example of where there is a ramp that typically is now an entrance ramp rendering a proposed project to changing the exit. You could see the HOV lanes are matched by double white lines in the center.

How does the project benefit traffic by adding the HOV lanes? Those lanes would go from Kew Gardens, directly into the airport. The general use lanes would also be adjacent to that, and beneficial, long term, advantages to having this and buying the HOV lanes with the ramp reconfigurations, the corridors wide traffic are not just improvements on the expressway but improvements on the service roads and the local streets by keeping the traffic on the highway of people looking to get to the airport or other destinations.

You are also improving operational conditions of the local street traffic. You could keep that traffic on the expressway off the local streets. This rendering shows the HOV lanes with some configurations. With the widening of the expressway, we are looking to include some noise walls. Something innovative such as the rendering here it wouldn't just be a solid concrete wall. It would include transparent paneling to allow light in but yet stop or reduce the noise levels from approaching the sensitive preceptor on the service roads including residents, churches, parks, libraries, etc.,

NYS DOT would implement a number of construction measures; noise monitoring to protect workers and adjacent communities, noise mitigation plan would be called on any project you look at dust, rodent

pest control measures and we would communicate information to the local communities by having an onsite community liaison with the community members to enter and ask questions, information, assimilated to the community, also projects like social media.

The project involves contracts. The first contract is about to start. It is one bridge that carries the Long Island Railroad track over the Van Wyck Expressway. The second contract which they are calling contract one, involves the replacement or retrofit of nine bridge overpasses along the Van Wyck Expressway between Hillside and 133rd Avenues. The third contract or contract two focuses on the replacement of the remaining three Long Island Railroad bridges over the expressway, and contract three is a significant one, by having all of those bridges move back, we could widen the Van Wyck within that and implement the ramp as well. We have the southern interchange here, there are about eight bridges to address as well.

Contract one is ready to start probably the spring, late spring, early summer. Contract two, early next year 2021; and contract three, in spring of 22. It will sort of phaseout where it will all include by the end of 2024, the completion of the JFK redevelopment project. Myself, and my supervisor Glorimar Reyes, we have a project website and email address: www.dot.ny.gov/vwe.com.

New York State Department of Transportation's Van Wyck Expressway (I-678) Capacity and Access Improvements to John F. Kennedy (JFK) Airport Project



Department of
Transportation

Andrew M. Cuomo, Governor
Marie Therese Dominguez, Commissioner
Wahid Albert, P.E., Chief Engineer



Project Purpose

- Provide increased capacity on the Van Wyck Expressway (VWE) between the Kew Gardens Interchange (KGI) and JFK Airport to improve vehicular access to/from airport
- Address the operational, geometric and structural deficiencies on the VWE between KGI and JFK Airport



Existing view of VWE looking south from Hillside Avenue



Existing view of northbound exit ramp to Linden Boulevard

Build Alternative

- Managed-Use Lane (MUL) to/from JFK Airport
 - ❑ High Occupancy Vehicle Lane with 2 or more occupants per vehicle (HOV2+) including occupied Taxi & For-Hire Vehicles with at least 1 passenger



Existing view looking south from Hillside Avenue



Proposed view looking south from Hillside Avenue

Anticipated Benefits

- Beneficial long-term effect to traffic due to increased capacity and decreased congestion
- Corridor-wide travel improvements – reduced travel times on Van Wyck Expressway mainline, service roads and cross streets
- Reduced truck traffic on local roadways



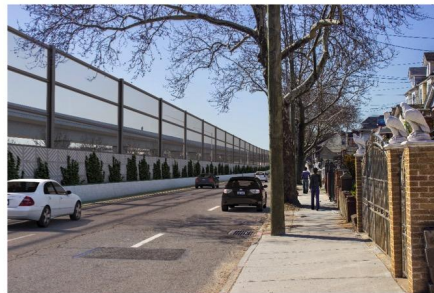
Proposed southbound exit ramp to Linden Boulevard



Proposed view of southbound service road at entrance ramp between 101st and Liberty Avenues


Noise Mitigation

- Traffic noise impacts identified at residences, parks, cemeteries, schools, places of worship, hospitals
- 12 noise barriers recommended along project corridor
- Remaining unabated impacts involve noise level increases of 3 decibels or less over existing conditions
- Benefited residents will be given an opportunity to vote on installation of noise walls



Proposed view of southbound service road between 105th Avenue and 107th Avenue

Construction Mitigation

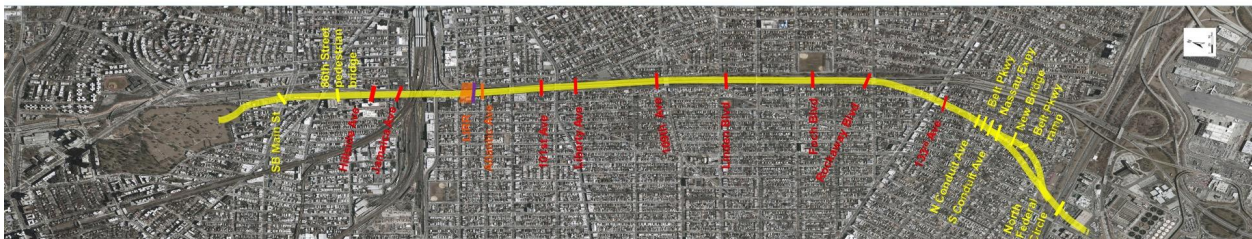
- Construction Noise Mitigation Plan would be developed during final design
 - Air and noise monitoring to protect workers and the adjacent communities
 - Dust, rodent/pest control measures
 - Communication through on-site community liaison, project office, website, and social media
- 
- A photograph of a construction site. In the center, a large building is under construction, heavily encased in yellow scaffolding. Several workers wearing orange safety vests and hard hats are visible on the site. To the right, a yellow construction vehicle, possibly a bulldozer or excavator, is partially visible. The background shows some greenery and a cloudy sky. The foreground is a concrete area with some construction equipment.



Construction of new retaining wall

Project Schedule

- ❑ Contract A: Replace 1 LIRR bridge (Construction has started)
- ❑ Contract 1: Replace/retrofit 9 bridge overpasses from Hillside to 133rd Avenues (Start construction mid-2020)
- ❑ Contract 2: Replace/retrofit 3 LIRR bridges and modify 1 vehicular overpass (Start construction early 2021)
- ❑ Contract 3: Widen Van Wyck Expressway, reconfigure ramps, replace 8 bridges, 1 new bridge (Start construction spring 2022) (Complete Project's overall construction end 2024.)



NYSDOT Contacts

Robert Adams, P.E.
Director of Structures
(718) 482-4683

Glorimar Reyes
Design Supervisor
(718) 482-4631



Project Website <https://www.dot.ny.gov/vwe>
Project Email: vwe@dot.ny.gov



Nantasha Williams, Manager External Affairs and Community Outreach, JFK Redevelopment Program Updates regarding opportunities and all of the wonderful things that we have been doing in the community to ensure that folks are engaged.



Community Outreach Efforts

- JFK Redevelopment Open House
- Assembly Member Clyde Vanel's Job Fair
- Ocean Bay Community Development Corp. Resource and Career Fair
- MWBE Compliance Consultants at JFK Redevelopment Community Information Center
- Terminal Developers office hours at JFK Redevelopment Community Information Center
- Advisory Council Committee Meetings
- New Order Solutions Toy Drive
- Presentations Community Board Meetings 10, 12, 13 & 14
- Council Member Adrienne Adams MWBE & Small Business Forum
- MWBE Certification Workshops (Nassau County and Southeast Queens)
- NYC High Schools Career Immersion Fairs





Representatives from August Martin High School were present to share their gratitude for the program. *"I am becoming a pilot, and they helped me realize that becoming a pilot is actually easy. I should have done it sooner. There are so many jobs at the airport and anywhere, you know, and to help build my community, and help raise you up."* Jamie Singh



Port Authority and Business Partners Offer Internships to Queens High School Students

Port offers AHRC internships with business partners



JFK Airport GM Charles Everett with the AHRC staff and student interns.

AIRPORT VOICE, FEBRUARY 2020 25

- Port Authority collaborated with on-airport businesses at JFK to offer seven high school students an opportunity to shadow current employees in order to learn skills needed for future employment.
- The seven students have intellectual and developmental disabilities—a population that is often times excluded from the workforce.
- The seven students are from various Queens high schools.
- Cristi Cleaning is the inaugural vendor participating in this partnership.
- Smartcarte will be the next vendor to provide opportunities for an additional six students.

30



Upcoming Event – Learning Day

Join the Port Authority and the Building & Construction Trades Council of Greater New York for a community event to learn about construction and employment opportunities. Information will be available on how to qualify for and apply to construction industry union apprenticeships and pre-apprenticeship, direct entry programs.

**Monday, March 23
4-7 PM**

**The Helen Marshall Cultural Center
at Queens Borough Hall
120-55 Queens Blvd.
Kew Gardens, NY**

In partnership with Acting Queens Borough President Sharon Lee and
Congressman Gregory Meeks

31



M/WBE Capacity Building Efforts

Since October 2019, the JFK Redevelopment Program has advanced their MWBE efforts through:

- Collaboration with PANYNJ Procurement Teams and Diversity & Inclusion in an MWBE Exchange Forum to promote opportunities in Security (November)
- Collaboration with Long Island SBDC to promote the JFK Redevelopment in their Government, Procurement and Business Expo (November 2020)
- Collaboration with Senator Comrie's office for his Small Business Workshop Series, January 2020
- Collaboration with Sen. Sanders' Office for the MWBE Reception at the Association of Black & Puerto Rican Legislators Caucus, February 2020
- Hosted Bi-Monthly M/W/S/D/BE Certification Workshops

Upcoming Events include:

- Monthly Roundtable Series, continued in March & April
- M/W/S/D/BE Certification Workshops: One Workshop in the Info Center, one Community Workshop in each month - March, April and May
- For more details on events, please visit www.ANewJFK.com

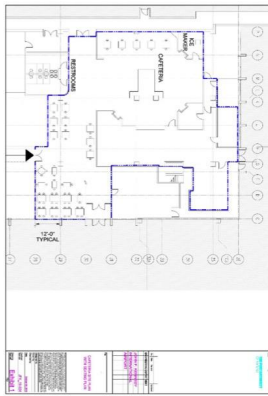


Note: For the JFK Redevelopment Program, PANYNJ and NYS ESD Certifications will be accepted.



Local Businesses Selected to Manage & Operate Employee Cafeteria At JFK Building 14

Exhibit 2: Building 14 – Cafeteria Layout Floor Plan



- The Office of Diversity & Inclusion collaborated with Aviation staff to ensure **local and diverse participation** from business who could manage, operate, and oversee a **5,441 sq. ft. employee cafeteria** at JFK Building 14.
- *Significant outreach was done to alert local and diverse food and beverage businesses as well as restaurateurs.*
- Two open houses were held on November 22nd (9-11AM & 2-5PM) to allow proposers to walk through and inspect the space and submit questions.
- **The cafeteria is expected to serve over 700 employees and visitors (M-F from 6AM – 3PM)**

ADVISORY COUNCIL CO-CHAIR REMARKS

CONGRESSMAN GREGORY MEEKS:

I am delighted to see all of you here for this meeting, because this airport redevelopment and working with the Port Authority can only be successful with your participation, your moving forward, and your getting things done. We will hear from the presenters and get informative updates. This is important for those of us who live in this community with such great opportunities, as we are the gateway to the United States of America. To have a partnership with the Port Authority and all those here who are making sure that representation is diverse and inclusive is absolutely key and essential to everything. Your engagement is important to ensure individuals in these various committees have a voice. There may be back and forth and sometimes this is not an easy process. Nor should it be, because you have to advocate for yourselves. You have to come up and try to talk about what is needed. The Port Authority may push back as a result of rules and regulations that they may or may not have. We have got to figure this thing out and make some compromises but the last thing that we want to do is what's happening in Washington D C. To be quite frank, when everyone is on opposite ends and there is nothing but fighting going on and there is no compromise going on, it is going to make things work for everybody.

I see colleagues from the NYS Assembly that are here and moving forward and working. I know when I see Vivian Cooke and Clyde Vanel here that they are going to hold the Port Authority accountable in Albany - that I could guarantee you. Let me just say that, these Advisory Council Meetings, provide the community an opportunity to have a seat at the table, and talking among yourselves, is what makes a great bit of difference. The initiatives that generally come out of the council committee meetings are given to the Port Authority and is what we want to see results come from. I have been trying to monitor and look at some of those initiatives particularly when we see expansion of the CAO in Rockaway, that's positive. We want to make sure that Rockaway is here, and we know that RDRC Kevin is here, we want to make sure that you are doing and getting some of those things that initiative is very much positive.

The Office of Second Chance Employment, tremendously important, because when we talk about individuals who may have made a mistake in life but need to get back on their feet and have a second chance, so that they could move and have the opportunity so we want to make sure that they are included. This is something that our District Attorney, our former Borough President, was really focused on. She as District Attorney now wants to make sure that we get people out of the Criminal Justice System. This is part of making sure that we reform Criminal Justice is all and be able to put them in a place where they earn some money and thereby not go back, but become positive citizens in our society.

The creation of STEM (science technology, engineering and mathematics) that we have at York College is an example. You know we have a lot going on in Washington DC and I will tell you that we have to fight and we have to make sure that we create jobs and opportunities. We raised the minimum wage to \$15 an hour, that's good, but I don't want everybody in our community to be settling to think that \$15 an hour is a lot of money and you'll be able to live nice and that's the way you will be able to create a career. I will tell you that they will show that by the year 2030, that's just ten years away, most of those jobs, like the \$15 an hour jobs, because of artificial intelligence will be gone. We have to make sure that we are training our individuals, our people, for the jobs that are going to be created tomorrow, and that's STEM jobs. That's why it was significant to move forward the STEM program at York and we started with young kids going all the way up and adults. We have to get everybody into this thing to make sure that we are creating jobs and/or get ready for the jobs that are being trained and will be for the future.

Lastly, I get asked frequently about concessions opportunities that may be at the airport. Now I am going to tell you right now, it is a double edge sword. Everyone needs to understand what is good about that, why this program is important, but also what's real. Some folks think, you know, I just get a concession

at the airport, and I got it made, but we want to make sure that folks understand what it is. We want to hold the Port Authority accountable so that those that are there, ready and equipped have a good location, negotiated a good lease, etc. It's difficult, and so this concessions piece that we are looking to work on with the Institute of Concessions is tremendously important. We want to create the opportunity for success and not for disappointment. For all the folks come up to me all the time and say "How do I get into the airport? or I want to have a concession", I want you to understand what you are asking for, and what the business of it is about. I thank the Port Authority for putting this institute together, so that people could learn and understand what it is, and we are building and developing a platform for success.

I see Hope Knight here from Greater Jamaica the opportunities of creating the workforce because part of what we want to do is to make sure that the wealth and the opportunity of the wealth and to growth wealth from this airport is shared by folks in this community and this borough.

I look forward to continuing to work with the Port Authority. I want you all to be real busy. I want that office you all on in the office on Jamaica Avenue to be jammed packed with people coming to bug you and ask questions and you all showing them the way. I want you to be polite to them. I want you to help educate them, and I want you to tell them the truth. I don't want you to lie to them. One of the things that's significant and most important is to have a real partnership with the Port Authority, because we do.

I didn't mention the environment, but we do share this place, and the environment is important, because we suffer from the noise, we suffer from the traffic and we may have other environmental concerns. That's why we have to work together.

Lastly, I see the Board of Rochdale Village here. Thank you for allowing us in your beautiful home. Thank you Rochdale Village. We appreciate you. This is what community is all about.

QUEENS BOROUGH PRESIDENT LEE

BP Lee brought greetings when she arrived and underscored her continued commitment to the JFK Redevelopment from her Office that her predecessor Queens DA Katz began. *"Including second chance employment, past union membership, MWBE commitment, so we are delighted to partner with the Port Authority, with the State on those deliverables directly into the areas, the communities impacted not just by development, but should really get a fair share of that development and the private investment into that."*



Community Initiatives Update

Second Chance Employment Update

- **CAO OSCE Program Manager**
Finalists selected – New Hire to be made within this month
- **Cornell Training Program**
Dates Confirmed for Employer and Community Based Organization Trainings to be held in March and April
- **Additional Airport Tenant Commitments**
Engagement continues with Tenant Partners to maximize access to available landside job opportunities



Community Initiatives Update

Institute of Concessions (IOC)

- In October, the New Terminal One committed to setting aside 50% of their concessions for local businesses based in NYC, with a special emphasis on Queens businesses. As those opportunities come to market, we want to ensure local businesses are informed, trained, etc. on how to run a concession on airport.
- PA will launch program to educate and support businesses to land concessions opportunities:
 - The following competencies will inform the program:
 - Navigating the concessions world and an overall education of operating and airport concession and what does that entail. CDE Program
 - Components of designing and building out a concession
 - Financial investment and return
 - Legal operating models and contracting
 - Logistics for managing and operating your concession
 - Secured requirements
 - Procurement process

37



Community Initiatives Update

Business Development & Matchmaking Hub

In an effort to fulfill the commitment to achieve a minimum of 30% M/WBE participation across the Redevelopment Program, the Port Authority and Terminal Developers will provide wraparound services to offer support to local and M/WBEs that will provide technical assistance, training, and access to capital, insurance, and bonding.

Next Steps: Solicitation will be released by April 2020

Successful Respondent(s) will be selected and announced in Q2 2020.

39



Community Initiatives Update

- The community input submission portal is closed; However you can still email us with any further ideas: JFKRedevelopment@panynj.gov.
- Port Authority has reviewed input submissions and categorized: not feasible, in progress, pending, and completed.
- Community Initiatives tracker will be posted online: www.anewjfk.com.

40



Partner Hours

Organization	Days	Times
M/WBE Compliance Consultants Support	Every Monday	12PM-4PM
The New Terminal One	Every Thursday	1PM-5PM
JFK Millennium Partners	1 st and 3 rd Wednesday	1PM-5PM
American Airlines	1 st Fridays	11AM-1PM
Queens Air Services Development Office	Every Thursday	11AM-5PM
Council for Airport Opportunity (CAO)	3 rd Thursdays	3PM-6PM

In addition to Partner Hours, additional office hours and appointments can be made with Terminal Developers

41

COMMITTEE UPDATES

BUSINESS DEVELOPMENT COMMITTEE CO CHAIRS – NYS SENATOR JAMES SANDERS & HOPE KNIGHT

MS. HOPE KNIGHT:

I just want to say that we did have two committee meetings since the beginning of the year, and we did focus on the concessions institute, that was something that the committee really had a great interest in and wanted to help work with the Port Authority around rolling that out. I thank the Port Authority for that very much. The other thing and I really do want to salute our committee in terms of thinking about the kinds of pools of capital that are available for both equity and long capital to undertake some of these concession opportunities. There will be more to talk about that because we need to continue to discuss and make that a reality, but, I feel like the next time I am up here I'll be able to say more. Thank you.

SENATOR SANDERS:

Good evening all. It's good that people are coming out, and it's good that you put your energies into fighting for things that you will only have when you fight for, so I am glad that this committee is struggling to find a way to make the business plan greater. Thank you, very much.

CAREER WORKFORCE DEVELOPMENT COMMITTEE CO CHAIRS– NYS SENATOR LEROY COMRIE & KEVIN ALEXANDER

On behalf of my co-chair, NYS Senator Leroy Comrie, and myself Kevin Alexander, I want to thank the committee for really working hard. You heard the Congressman speak about the initiative that we focused on so far which was second chance and also the expansion of the Council for Airport Opportunity. We felt that this was really important for the community that we take the resources that exist with the Council for Airport Opportunity and expand that so that we have a strong network that encompasses southeast Queens as far as the second chance initiative. It's really a group effort, because one of the challenges that we have in the workforce is that we have all competing for limited resources. What it means is that we've had to come together as organizations dealing with the workforce and say how do we collaborate, and how do we take our strengths and elevate them so that we are not replicating the same thing so that in the future, we have a great model. When you hear about the operator for food service in Building 14 and they need approximately 700 workers, we are ready to go, as a committee, as a group, as an organization representing southeastern Queens, and we want to do more of that to make certain that everybody has an opportunity not just from a work standpoint, but to a career pathway so that they could thrive as well. More to follow, more work to be done, but thank you so much to the committee as well.

EDUCATION COMMITTEE CO CHAIRS – ASSEMBLYWOMAN ALICIA HYNDMAN & DR. BERENECEA EANES

ASSEMBLYWOMAN HYNDMAN:

Good evening, everyone. I would like to say that Dr. Eanes, as soon as she came in has really jumped right in and done a tremendous job, and she is a great co chair to have. I want to recognize Dr. Grant, Selvena and Nantasha for keeping us on track making sure that every time we have a meeting, they always pick up where we left off, and I think that one of the things that we say about education is that it's not just linear it's life long in making sure that this workforce development, that we don't leave anyone out.

DR. EANES:

Good evening, everyone. Thank you for the warm welcome. We have had two meetings. Our last meeting was a joint meeting with the Workforce Development Committee. It was on campus and I am so proud that we had some students show up and show out. They were wonderful. I am totally bias to our students and everybody knows that. It is a shameless plug because they are fabulous, and we continue to talk about the depth and breath of the work that we do in making the synergy between this work and education real. We are hoping to continue that. Thank you.

ENVIRONMENTAL STEWARDSHIP COMMITTEE – ASSEMBLYWOMAN STACEY PHEFFER-AMATO & BARBARA BROWN

As was explained earlier the EA process underway. Unfortunately our two Co-Chairs Assemblywoman Pheffer-Amato and Barbara Brown had previous commitments tonight. You are invited to attend the next committee meeting which will be posted on ANewJFK.com.



Contact Us

Office Hours:

Mon, Tues, Wed, Fri – 9AM-5PM &
Thurs – 11AM – 7PM

External Affairs & Community Outreach Managers

Selvena N. Brooks-Powers &
Nantasha Williams

JFK Redevelopment Information Center
144-33 & 35 Jamaica Avenue, Jamaica, NY
(718) 244-3834
JFKRedevelopment@panynj.gov | www.ANewJFK.com

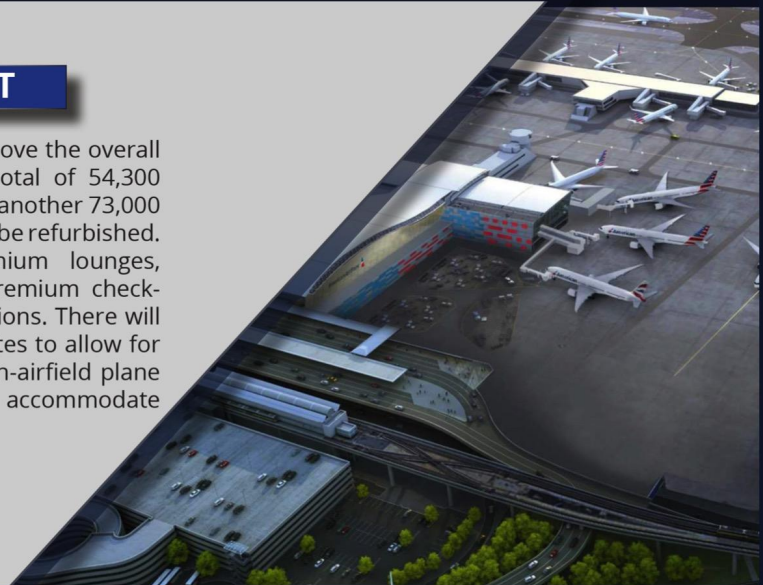


TERMINAL 8

JFK International Airport

THE PROJECT

The Terminal 8 project will improve the overall customer experience, with a total of 54,300 square feet of added space and another 73,000 square feet of existing space will be refurbished. New amenities include premium lounges, enhanced baggage systems, premium check-in space and upgraded concessions. There will be five additional wide-body gates to allow for more flights and four nearby on-airfield plane parking / unloading areas to accommodate the added flights.



JFK TERMINAL 8



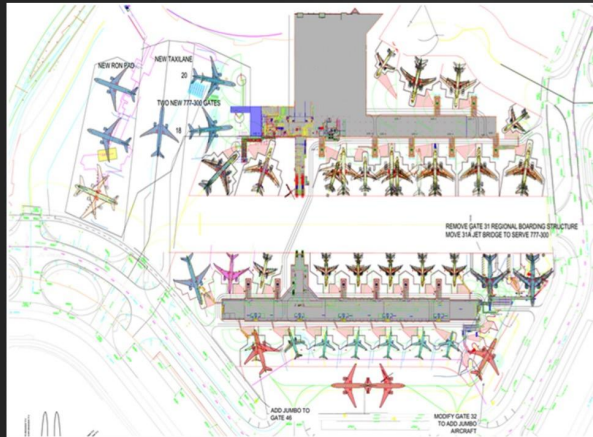
Project Participants

- American Airlines (airline / lessee)
- Port Authority of New York & New Jersey (authority / lessor)
- Construction:
 - Holt Construction (construction manager)
 - AECOM (design)
 - Merchant Aviation ADPI (design)
 - Penda Aiken (MWBE/Community engagement consultant)
- Baggage Handling:
 - Siemens (equipment)
 - Brock (controls)
 - Cage (program management)

JFK TERMINAL 8



JFK T8 Scope



- \$344m program. Construction value \$140m.
- Extension of the existing head house 30' (Zone 2)
- Extension of the concourse adjacent to gate 14 & 16 to the East a total of 60' (Zone 1).
- Buildout of space on the 4th level of the Terminal, relocation of American Airlines Staff
- Develop a shell space of 22,300 sf for a future lounge construction on the fourth level
- Installation of (3) new 777-300 capable hardstands on the existing Parcel M
- Separate gate 14 & 16 common boarding to allow for parallel boarding and deplaning of the two gates
- Reconfigure the existing Premium Service check-in
- Up-gauge Gate 31 to a 777-300 capable gate
- Up-gauge Gate 32 and 46 to a 777-200 capable gate

JFK TERMINAL 8



JFK T8 Redevelopment Program Schedule

JFK T8 REDEVELOPMENT PROGRAM (ESTIMATED EXECUTION SCHEDULE)																		
Project	Subproject	Packages	Phase	2019				2020				2021				2022		
				Qtr 1	Qtr 2	Qtr 3	Qtr 4	Qtr 1	Qtr 2	Qtr 3	Qtr 4	Qtr 1	Qtr 2	Qtr 3	Qtr 4	Qtr 1	Qtr 2	Qtr 3
Airside & Terminal Expansion	30' Bump-out	TAAs & MWAs	Design															
			PA Approval															
			Construction															
	60' Bump-out	TAAs & MWAs	Design															
			PA Approval															
			Construction															
	Civil	TAAs & MWAs	Design															
			PA Approval															
			Construction															
BHS Optimization	Phase 1	TAAs & MWAs	Design															
			PA Approval															
			Construction															
	Phase 2 & Phase 3	TAAs & MWAs	Design															
			PA Approval															
			Construction															
Premium Services	New Lounge & Check-in	TAAs & MWAs	Design															
			PA Approval															
			Construction															

JFK TERMINAL 8



Upcoming Anticipated Opportunities

Trade	Bid Issuance
SECURITY ESCORTS	Q2 2020
SCAFFOLDING & PROTECTION	Q2 2020
SITWORK	Q2 2020
DRIVEN PILES	Q2 2020
DEMOLITION	Q2 2020
CONCRETE	Q2 2020
MASONRY	Q2 2020
STEEL AND DECK	Q2 2020
METAL FABRICATIONS	Q2 2020
CARPENTRY, FRAMING, SHEATHING ETC.	Q2 2020
MILLWORK	Q2 2020
ROOFING	Q2 2020
WALL PANELS AND LOUVERS	Q2 2020
CEMENTITIOUS FIREPROOFING	Q2 2020
DOORS, FRAMES AND HARDWARE	Q2 2020
SPECIALTY DOORS	Q2 2020
FIRE CURTAIN	Q2 2020
CURTAIN WALL SYSTEM	Q2 2020
ARCHITECTURAL GLASS AND METAL	Q2 2020

Trade	Bid Issuance
DRYWALL	Q2 2020
CEILINGS	Q2 2020
TILE AND STONE	Q2 2020
FLOORING AND BASE	Q2 2020
TERRAZZO	Q2 2020
EPOXY FLOOR COATINGS	Q2 2020
PAINTING	Q2 2020
SIGNAGE	Q2 2020
TOILET PARTITIONS AND ACCESSORIES	Q2 2020
APPLIANCES	Q2 2020
ELEVATORS	Q2 2020
ESCALATORS	Q2 2020
SPRINKLERS	Q2 2020
PLUMBING	Q2 2020
HVAC	Q2 2020
ELECTRICAL & FIRE ALARM	Q2 2020
Fuel Hydrant Systems	Q2 2020
Jet Bridges	Q2 2020

JFK TERMINAL 8



Parameters & Opportunities

- Worker Opportunities
 - 30%+ minority union workforce
 - 7%+ female union workforce
 - Local workforce
- Vendor Opportunities
 - 20%+ MBE participation
 - 10% WBE participation
 - Local vendor participation
- Union labor is required

JFK TERMINAL 8



MWBE Compliance & Community Engagement

- Inform Public of Progress of the Project
- Provide Community Engagement Services
- Facilitate workforce participation
- Engage MWBE Community through outreach events (First Friday's office hours)

Firms looking to participate on the JFK T8 project should complete the pre-qualification for Holt Construction. Please use the following link below:

- <https://holtcc.com/subcontractor-form/>
- Email: jfkt8@holtcc.com

JFK TERMINAL 8



Terminal 6 Redevelopment



JFK Redevelopment Community Advisory Council
March 5th, 2020



Questions? Interest? Want to join our mailing list?
Reach us at info@jfk6.com



67

Bill Thompson



- Founder of American Triple I Partners and Chair of the firm's Industry Advisors' Committee
- Previously, the 42nd Comptroller of New York City, serving eight years from January 2002 to December 2009
- As Comptroller, among a variety of other duties, served as custodian and investment advisor to the five New York City Pension Funds, where he managed a combined portfolio amounting to more than \$100 billion at the close of his tenure
- Served as Brooklyn Deputy Borough President and as a Member and five-term President of the New York City Board of Education

Questions? Interest? Want to join our mailing list? Reach us at
info@jfk6.com.

Terminal 6 Team

Developers:

MWBE
Strategy &
Outreach:Design /
Builder:
AECOM HUNT

Questions? Interest? Want to join our mailing list? Reach us at
info@jfk6.com.

➤ Selection of Design / Builder

➤ Lease Negotiations Update

AECOM Hunt

Building for our clients for 75 years

Founded in 1944 in Indianapolis, Indiana, AECOM Hunt works to create strong client relationships, emphasizing quality and skill-utilization in every aspect of construction.

As the market leader in sports, healthcare, and aviation, AECOM Hunt has a longstanding history of being industry pioneers - building many "first of their kinds" across the U.S.

Questions? Interest? Want to join our mailing list? Reach us at info@jfk6.com.

Aviation
Convention Centers
Healthcare
Higher Education
Hospitality
Industrial

Delivery Methods

Construction Manager
as Agent
Construction Manager at-Risk
Design/Builder
General Contractor
Owner's Representative/
Project Manager
Program Manager

Questions? Interest? Want to join our mailing list? Reach us at info@jfk6.com.

Near-Term Opportunities Through Design-Build Contractor in 2020



- Architectural services
- Engineering
- Geotechnical soil sampling/testing
- Surveying
- Safety management
- Cost estimating
- Schedule management
- Document controls
- Technology/network/telecommunications for field operations
- Inspections
- Quality Control/Materials Testing
- Project, Construction, and/or Logistics Management

Questions? Interest? Want to join our mailing list? Reach us at info@jfk6.com.



- Catering
- Janitorial services
- Transportation operators
- Sustainability consultants
- Printing and copying services
- Excavation
- Crane rental
- Demolition services
- Concrete
- Structural steel
- Building trades
- Civil/Site trades
- Signage
- Electrical enabling work
- Deep foundations
- Exterior façade
- Roofing

Questions? Interest? Want to join our mailing list? Reach us at info@jfk16.com.

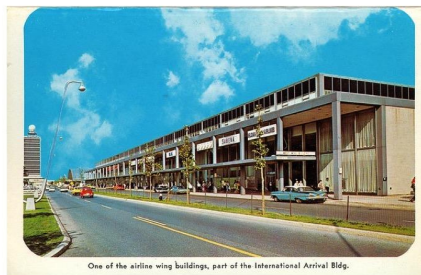
Upcoming events with AECOM Hunt

- **Regional Alliance Contractor's Clearing House – AECOM Hunt** will be in attendance at this event, and will be prepared to discuss forthcoming opportunities
 - **April 3rd, 2020** from 8:30am to 12:00 pm at 4 Irving Place, New York, New York
- **Meet and Greet - AECOM Hunt** will be hosting an event for local businesses in the Queens community to discuss forthcoming opportunities
 - Community will be notified with respect to date and location of event, but expected to take place in early April

Questions? Interest? Want to join our mailing list? Reach us at info@jfk16.com.



About JFKIAT



JFK International Air Terminal, LLC (JFKIAT) is the first private operator of an airport terminal in the United States.

Founded in 1997, JFKIAT is a U.S. affiliate of Amsterdam based Schiphol Group, a leading airport operator.

Led by a dedicated and knowledgeable management team with combined decades of experience in airline and airport operation, **JFKIAT has overseen the growth of T4 in passenger volume and size over the last 20 years.**

Since 2001, T4 has expanded from 16 gates to 35 gates totaling 2.2 million square feet. **T4 is home to 30 airlines, serving 22 million passengers, with over 12,000 employees.**



ZERO ACCIDENTS



BEST TERMINAL AT JFK



RETAINING OPERATING MARGIN



INNOVATION (LEADING THE WAY IN THE AIRPORT INDUSTRY)



TOP RANKED IN GREAT PLACE TO WORK

| JFKIAT |

70

Corporate Social Responsibility

JFKIAT believes in giving back to the communities it serves and launched the 4GOOD Program in 2016.

- In cooperation with local schools (York College, Vaughn College, Virgil I. Grissom Middle School), offer internships, volunteering, mentorship, and career opportunities.
- Raise approximately \$150,000 annual for charities (Boys and Girls Club, The New York Restoration Project, Relay for Life)
- T4 is the first existing terminal in the US to receive LEED Gold certification by the Green Building Council for operations and maintenance.

4GOOD



| JFKIAT |

71

Minority Women Business Enterprise MWBE

JFKIAT has consistently provided business opportunities by soliciting Port Authority Certified MWBE firms across all aspects of our business, operations and professional services.

- Construction projects at Terminal 4 engage with the Port Authority Affirmative Action Coordinator at JFK International Airport
- JFKIAT projects have consistently exceeded the 20% established goals and are currently targeted to exceed the 30% MBE & WBE goals



Airport Concessions Disadvantage Business Enterprise

ACDBE



JFKIAT currently partners with companies which use local minority ownership and participates within existing Concession Operating Businesses.

- Work closely with Business Development at the Port Authority to ensure ACDBE goals are met, maintained and new opportunities within the community are explored.
- ACDBE participation currently meets/exceeds the 20% requirement:
 - Creating partnerships with business partners
 - Directly leasing with ACDBE operators
 - Purchasing ACDBE supply chain

| JFKIAT |

72

Redevelopment Project

T4 will be expanded and refurbished in connection with the JFK Redevelopment (T4 Redevelopment Work Project)

- The Redevelopment Project will consist of:

Phase III Expansion Project:

- Construction of 16 additional narrow-body gates (8 wide-body equivalent) on Concourse A
- Associated improvements to and expansion of certain T4 facilities

Transformation Project:

- Renovation of Existing Terminal to Include New Self-Service Bag Check, New World-Class Retail and Food Options, Best-in-Class Technology, Upgraded Ticketing and Gate Areas, and Other Passenger Experience Enhancements

Leasehold Development Project:

- Design and construction of a new Terminal 4 plaza to facilitate movement of vehicular and passenger traffic accessing Terminal 4



JFK Terminal 4 Expansion | Phase III
JFK Redevelopment Community Advisory Council

74 March 5, 2020

NYS CONSTRUCTION – PAST AND PRESENT

JFK Phases I and II

- \$1.5Bn project from 2010 – 2015
- Achieved 21% MWBE participation for Phase I
- Achieved 30% MWBE participation for Phase II

LGA New Terminal C

- \$3.9Bn replacement of Delta Terminals C and D that commenced in August 2017
- Delta serves as the general contractor, holding all design, management and construction trade contracts directly
- To date we have awarded over \$1.7Bn in design, management and construction trade contracts, and we are exceeding 33% of MWBE participation as well as more than \$150M in contracts to Queens based firms and contractors

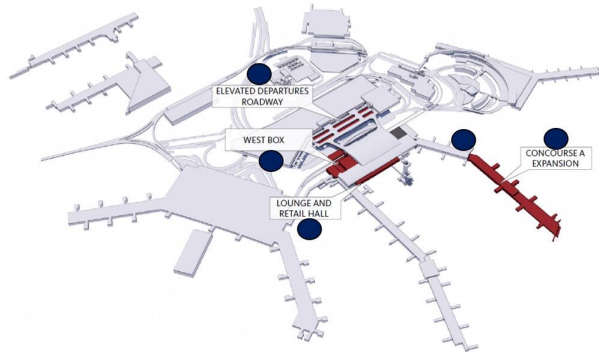
JFK Phase III

- \$3.8Bn from 2020 – 2025
- Delta serves as the general contractor, holding all design, management and construction trade contracts directly
- Our intention is to once again to exceed our 30% MWBE target as well as focus on local Jamaica, Queens based businesses—especially in the areas of design and professional services

75



PROJECT BRIEF



The Phase 3 Expansion of Terminal 4 is comprised of the following 5 elements:

- 01 Enabling Works
- 02 Landside
- 03 Headhouse Expansion
- 04 New Airline Lounge & Retail Hall Expansion
- 05 Concourse A Expansion

76



LOCAL, MINORITY AND WOMEN-OWNED BUSINESS ENTERPRISE OUTREACH EVENT

DELTA AIR LINES JFK INTERNATIONAL AIRPORT - PHASE 3 EXPANSION

DELTA AIR LINES invites construction and professional services firms to learn about upcoming opportunities at JFK Airport. This event is FREE. Registration is REQUIRED.



TUESDAY, MARCH 24, 2020
8:30 am – 12:30 pm
Continental breakfast will be served at 8:30 am.

HILTON NEW YORK
JFK AIRPORT
144-02 135th Avenue
Jamaica, NY 11436

REGISTRATION FORM

Please register no later than March 20, 2020 at www.regional-alliance.org or email your registration to: pcamargo.ra@verizon.net

Name	
Position	
Company	
Trade/Service	
Address	
City/State/Zip	
Phone	
Email	

M/W/LBE OUTREACH EVENT

Future events will be scheduled this spring...

The New Terminal One JFK International Airport



Key Project Updates

- Port Authority Board authorized proposed Lease for The New Terminal One at JFK – November 21, 2019
- Ongoing design and early works activities
- Continuing to identify, engage and onboard local and MWBE firms

Community Engagement Recap

Events Attended and/or Sponsored Include:

NYS Assembly Member Clyde Vanel Job Fair
SUNY Queens EOC, Jamaica, NY
October 24, 2019

LaGuardia Community College PTAC SBS Government & Business Matchmaker Event
Con Edison Learning Center, Long Island City, NY
November 8, 2019

Greater Jamaica Development Corporation Gala
Second Floor NYC
November 20, 2019

COSAB Thanksgiving Dinner
Jamaica, NY
November 28, 2019

Boy Scouts of America – Salute to Women in Leadership Awards
Russo's on the Bay, Howard Beach
December 3, 2019

Queens Chamber of Commerce Business Person of the Year Awards Dinner
Terrace on the Park, Flushing, NY
December 4, 2019

Zeta Phi Beta Queens Honoring Queens
TWA Hotel
December 7, 2019

JFK Redevelopment Career Immersion Days
August Martin High School – February 6, 2020
Thomas Edison High School – February 11, 2020
Far Rockaway Education Campus – March 3, 2020

AMENY Conference
Desmond Hotel, Albany, NY
February 14, 2020

NYS Black Puerto Rican Legislative Caucus Conference
Albany Hilton and Empire State Plaza Convention Center
February 15-16, 2020

City & State Diversity Summit
Museum of Jewish Heritage
February 20, 2020

100 Suits for 100 Men Suit Drive
The New Terminal One Project Office
December 2019



100SUITS
STAND OUT. STAND UP. STAND TALL.

Contact us at info@onejfk.com

THE NEW TERMINAL ONE
JFK INTERNATIONAL AIRPORT

The New Terminal One Events

The New Terminal One Monthly MWBE Information Sessions



JFK Redevelopment
Community Information Center
November 12, 2019



Jamaica Performing Arts Center
December 11, 2019



JFK Airport Hilton New York
January 23, 2020



JFK Redevelopment Community
Information Center
February 11, 2020

Upcoming

- JFK Redevelopment Community Information Center Office Hours (Every Tuesday, 1-5pm)
- The New Terminal One Information Session (March 10, 2-3pm at Community Information Center)
- The New Terminal One Information Session (April 14, 2-3pm at Community Information Center)

Local Contracting Update

Design Services

RCGA Architects
Jamaica, NY



Robert Gaskin,
AIA, NOMA
Principal

**Aarris Design
Studios**
Manhattan, NY



Nicole Hollant-Denis,
AIA, NOMA
Principal

**International Design
Service**
Rosedale, NY



Johnson Esho,
PE, LEED AP, CDT
CEO

Structural Engineering

A.B. Engineering
Springfield Gardens, NY

A.B. Engineering



Antenor Brutus, PE
President

Zi Engineering
Valley Stream, NY



ZI ENGINEERING, PC



Zahid Ismail, PE
President

JFK Airport Academy: Progress to Date

- The New Terminal One will create employment opportunities across a range of categories including ramp operations, customer service and terminal management.
- The JFK Airport Academy is envisioned as a training facility to attract and train local members of the community for careers in aviation.
- Ongoing discussions and diligence over the past few months to inform the development of the JFK Airport Academy:
 - Completed market scan of existing international, national and local aviation training programs to identify potential partners and ensure Academy offering is complementary
 - Introductory meetings with international aviation organizations on potential accreditation opportunities
 - Developing initial course offerings and facility sizing assessment
 - Initial partnership conversations with the Council for Airport Opportunities
 - Discussions underway with the Port Authority as a possible airport-wide initiative



Continued development of JFK Airport Academy concept with input from the local community, local educational institutions, the Port Authority and other JFK stakeholders

Overview of Opportunities

Current and Upcoming Opportunities

Opportunities During Design & Construction (2020 – 2025)	Opportunities During Operations (East Pier 2023, Full Terminal 2025+)
<ul style="list-style-type: none">• Marketing• Legal• Accounting• Building Trades• Fencing• Catering• Transportation Operators• Art Curation• Office Supplies• Structural	<ul style="list-style-type: none">• Airport Operations• Concessions Operators• Customer Service Representatives• Retail Jobs• Legal• Accounting• Maintenance Professionals• Janitorial Services• Communications and PR Specialists• Marketing

Visit: anewjfk.com/work-with-us/thenewterminalone

Contact us at info@onejfk.com

THE NEW TERMINAL ONE
JFK INTERNATIONAL AIRPORT

85



86

Port Authority PSA

The Port Authority takes this responsibility of safety incredibly seriously and we have instituted new measures at our airports to make sure that our customers, our employees, and everyone that uses our airports are working in a clean, sanitary and healthy environment. We have implemented new cleaning measures, we are working with our terminal operators to again insure that those cleanings are happening more regularly than they previously did and we are working very closely with our federal partners CDC and customs and border patrol CDP to facilitate the screenings in our facilities. We take our responsibility incredibly seriously and we want to protect everyone that goes through our facilities. We hope that everyone stays healthy and safe and that we get through this together quickly.

Q&A

Question:

This is for terminal developers. Will your terminal redevelopment require 100 percent union labor? Everyone here is saying yes. No? Who is saying yes? If so, there will be PLA's for every terminal?

Answer:

So, the short answer because it's different for each terminal but the short answer is that there will be project labor agreements for every terminal project each of the terminal developers will be negotiating that with the building trades unions and they will be looking at things like carve outs for MWBEs and for zip codes for local businesses. Each project will have a project labor agreement in place for each terminal and each developer has negotiations with the building trades unions, but each that will be in place.

Question:

The team is doing a phenomenal job in informing local businesses and small businesses of these great opportunities. Please keep up the great work every presentation is a great idea, can we have Saturday presentations?

Answer:

Great question. That will be recommended for discussion by the team.

Question:

Is HOV going to be based on the number of passengers? How is the NYPD going to deal with that? Are you going to provide parking for trucks, 18 wheelers and affordable parking?

Answer:

So our partners from the New York State Department of Transportation had to leave, but the HOV lane, which I assume this question; is going to be on the Van Wyck Expressway, which is being handled by New York State DOT. They will be putting in place the measures to govern how that will be managed. They have their website on this page, and we'll make sure to make that available for everyone here as well and they will have a dedicated community liaison in place to answer those types of questions. So, stay tuned. That information will become available as the project advances.

Question:

Will there be art and murals? How could I be a local artist or local contributing artists?

Answer:

Yes, there will be. There will be use of local artists so you can contact them for the opportunities if you are here tonight I would come and make that connection while we are here.

Question:

Drone knowledge has over 320 uses for businesses, especially construction such as survey infrastructure inspection marketing and more. Will there be a need for FAA certified drone service for construction initiatives?

Answer:

Terminal developers are all saying talk to us. So they are open to the idea. How cool is that?

Question:

I A Systems, Inc. New York is a MWBE and fire production consulting engineering firm. We also provide MWBE consulting services to other architectural firms. How and when can we participate in development projects as a MWBE consulting engineering firm?

Answer:

So to that question we again welcome you to come into our outreach office to go to www.anewJFK.com to see the terminal hours and come in and sit down and have one on one experiences with them to really talk through what it is your company does what your capacity is and see where the opportunities may be.

Question:

Can disabled veterans volunteer at JFK and if yes what positions will be available?

Answer:

The Port Authority has a service-disabled Veterans commitment, for our projects. I want to whoever asked that question, if you are still here, I encourage you to speak with our Diversity & Inclusion team to learn more information about that and specific information focused on business and contracting opportunities. In regard to volunteer opportunities and things like that, we encourage you to come and talk to us to see if there is something that we could work out the same way that we did with RDRC there could be other opportunities for volunteers. We encourage you to come to the community center and share with us your thoughts. On the service-disabled veterans business opportunities, there's a formal inclusion team that can share more about that as well.

Question:

Regarding the Van Wyck Expressway, that's the only legal route for commercial traffic between JFK and I95. What does the State plan to do to help the 8.6 billion worth of air cargo that goes in and out of JFK each year and to mitigate traffic concerns during construction?

Answer:

We covered traffic concerns during our slide presentation. There will be more to come. This was a preview of the different measures that we put into place to address concerns about traffic i.e. truck traffic, vehicular traffic, things like that. In regard to the cargo areas, that's something that we have not focused on in as much detail. As part of the JFK vision plan there is also an effort to really look at the cargo facilities at JFK. The cargo at Kennedy and to renew and revitalize those as well and make those, 21st century modern facilities to handle the cargo. That has been coming to the airport. If you want more information on that please do come and talk to us. There is a lot of information on that front. We have not focused on it as much, but it is an important component of the JFK development.

Question:

What is being done to prepare for the influx in traffic? Is the city considering land bridges to help people walk over busy traffic similar to how the traffic flows in Vegas?

Answer:

As far as I know there are no plans to build those types of bridges however the DOT did say that they will be looking at the overpass over the Van Wyck Expressway and improving those as part of the Van Wyck Expressway project.

Question:

Is it necessary to attend all partner hours if you have already attended events in the past, please clarify, and will this presentation be available on the website?

Answer:

We typically put out a version of this which has more detail for those who have not been able to come out to the meetings which is under the meeting minutes on ANewJFK.com. I know that you guys will remember this website, right, so that's where you could find the information. For those who have come out already to meet with the terminal developers, we still encourage you to come to the event that makes sense for your business and for what you are looking to achieve. We have had people sometimes call us ahead of an event and ask if it focuses on what my business does. This is what you can come to do in the office in terms of speaking to the different terminal developers and ask their opinion. There are opportunities sometimes that will come up and we may say, yes you should come. We are open to those types of calls, and if you were to come into the office we are here and prepared to answer those types of questions. It's important to stay engaged, because the early opportunities taking place so far, have been because those are regular faces that other internal developers continue to see. We definitely encourage you to stay engaged with whatever works for your time schedule. Also, the business matchmaking hub that will be a part of the solicitation spoken of earlier, will help to connect the businesses to that opportunity when their time comes.

Question:

I operate a transportation company, and I am looking to provide bussing for this project. Are there any air admissions qualifications that we need to be aware of for the equipment used in servicing this project?

Answer:

All of that information was published and made available under the EA process that's run by the FAA. If you have specific questions that you want to come up afterwards and ask I could answer them. However, in terms of air noise monitoring and all of those factors that we consider as part of our program planning are filed with the FAA under the processes.

Additionally, the Port Authority, outside of the Redevelopment is looking to transition all of our shuttle buses from the airport to diesel to low emissions to electric. Being mindful of the environment and the pollution that these vehicles emit. That's something that when it goes outside of the development is separate and apart from the project but it is an effort quickly moving forward.

CLOSING REMARKS

Your presence is not just to here to be active participants in the process but also going out and telling those who don't know what is going on with this Redevelopment. We don't want anybody in this geographic area to say that they didn't know that this redevelopment was happening once it's completed. Let's be conscious of the fact that we have to let others know. This is crucial for our young people, our existing businesses, and community. There will be no stone unturned because it's our job to make sure that we raise the concerns of this community so that our community is better as a result of the redevelopment. Thank you for your time and participation tonight. Get home safely, be safe and be kind to one another.