

# **JFK Redevelopment Program**

Community Advisory Council Meeting

05.08.2022



**AIR LAND RAIL SEA**

## **Welcome**



**Dr. Stacie NC Grant**  
JFKR Community Advisory Council, Facilitator



Attendees were able to network, visit with Terminal Developers and enjoy light refreshments prior to the start of the meeting.

Dr. Grant welcomed everyone, reviewed the agenda and thanked Rev. Elaine Flake and the staff of the Allen AME Cathedral for hosting our meeting.

# Agenda

- Opening Remarks – Dr. Stacie NC Grant, Facilitator
- Greetings & Prayer – Reverend Dr. Elaine M. Flake, Senior Pastor Greater Allen Cathedral, Advisory Council Member
- Opening Remarks – Congressman Gregory W. Meeks and Queens Borough President Donovan Richards, Co-Chairs
- Greetings – Rachelle Antoine, Co-Manager of External Affairs & Community Outreach
- Port Authority of New York & New Jersey Updates
- Diversity in Contracting and Local Workforce Updates
- Terminal Developer Updates
  - T4 – Delta Air Lines & JFKIAT
  - T6 – JFK Millennium Partners
  - T1 – New Terminal One
  - T8 – American Airlines
- Community Programming & Initiatives
- Community Engagement & Outreach
- Q&A

3



## Greetings

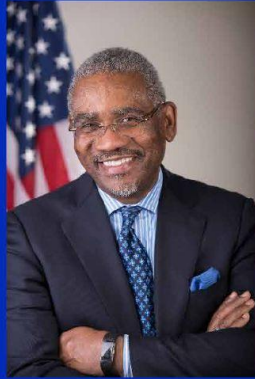


Rev. Dr. Elaine M. Flake  
Senior Pastor  
The Greater Allen A.M.E. Cathedral of New York



Rev. Elaine Flake welcomed attendees to Allen AME Cathedral and expressed her excitement in hosting the important work of the Redevelopment. Additionally she expressed optimism for the opportunities that are available for the residents and businesses of the community.

# Opening Remarks



**Congressman Gregory W. Meeks**  
Co-Chair,  
JFK Redevelopment Community Advisory Council



**Queens Borough President Donovan Richards**  
Co-Chair,  
JFK Redevelopment Community Advisory Council



## Remarks from Congressman Gregory Meeks:

Congressman Meeks thanked Rev. Elaine Flake and welcomed everyone. He expressed his gratitude for such a great turn out and reminded the community that we have to show up to take advantage of having an 18 billion dollar project in our backyard. As he holds the PANYNJ & Terminal Developers accountable to do right by our community, he will also hold the community accountable for being prepared when seeking these contracts. This is a new and different model utilizing public and private dollars. If done correctly we will have incredible transformation in our communities. He congratulated some of the successful contractors in the audience. Lastly, he discussed the engagement of the Advisory Council Members being critical at this juncture. Replacements will be made if the participation and commitment is not consistent. Now is the time for the submission of new ideas and proposals to be vetted. He closed with: *"The time is now. Everyone has a chance to participate!"*

## Remarks from Queens Borough President Donovan Richards

BP Richards applauded the legacy of Allen AME and his commitment to assist this landmark institution. He shared stats on unemployment in Queens going down 4% from 20%. This underscores why the opportunities to focus on Workforce & Career Development from this Redevelopment Program are so important our community. Additionally, modeling programs like the ones in Aviation High School can be duplicated in August Martin High School. With a degree in aviation, he knows firsthand the job opportunities available to our young people, i.e. 6 figure salaries and 25K starting bonuses. He underscored that this is why the Advisory Council Committee is key. We need to vet ideas to come up with real ideas and proposals to deliver on community benefits. He announced upcoming Aviation job fair on June 8th in partnership with his office and the Council for Airport Opportunities (CAO). He closed with: *"You can't complain if you don't show up. Transparency equals accountability. Onward and upward...Queens get the money!"*



# Greetings



**Ms. Rachelle Antoine**  
Co-Manager of External Affairs and Community Outreach  
JFK Redevelopment Program



Rachelle shared greetings, thanked the staff and introduced the new JFK Co- Manager, External Affairs, Community Outreach Akshar Patel

## JFKR Co-Manager, External Affairs and Community Outreach



**Akshar Patel**  
Queens Village, NY 11427



## Moment of Silence

**Francisco Reyes/41**

**Fernando Lagunas Pereira/28**

**April 3, 2023**







## JFK Redevelopment: Program Overview

- 4 distinct public-private partnerships
- Private investment = \$15.5+ Billion
- PANYNJ investment = \$3.9 Billion
- Leveraging public dollars at a 4:1 ratio

*Total JFK investment = \$19+ Billion*

10



## JFK Redevelopment: Program Overview

### Terminal 8

(American Airlines / British Airways):

### Terminal 4

(Delta Air Lines / JFKIAT):

### New Terminal One

(Ferrovial / Johnson Loop Capital / Ullico):

### Terminal 6

(Vantage / American Triple I / RXR / JetBlue):

- **Groundbreaking – Jan. 2020**
- **Expansion opened December 1<sup>st</sup>**
  - British Airways moved in
- **“New” Deal – April 2021**
- **Groundbreaking – Dec. 2021**
  - Moved out of Terminal 2 in Q1 2023
- **“New” Financial close Jun. 2022**
- **Groundbreaking – Sept. 2022**
- **“New” Financial close Nov. 2022**
- **Groundbreaking – Feb. 2023**

11



## Terminal 6 Groundbreaking – Feb. 23, 2023



**All JFKR Terminal Projects: Now Complete or In-Construction!**

13



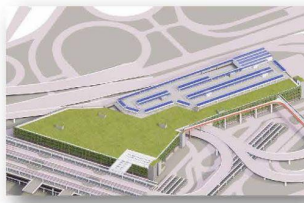


# Central Terminal Area: Roadways | Utilities | Ground Transportation Center



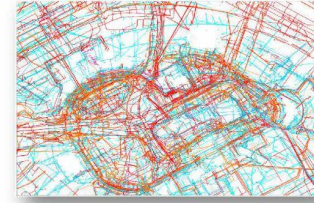
## ROADWAYS

- Reconfigured CTA roadway system
- Seamless and more efficient access to Terminals
- Intuitive wayfinding and enhanced traffic technologies



## GTC GARAGE

- Multi-level parking with enhanced technology
- Arrivals plaza to support multiple functions at-grade
- Accommodate roof level plaza (future build-out)



## UTILITIES

- Relocate existing utilities
- Selected utility upgrades to current standards
- New utilities to support new facilities and systems

14

# Central Terminal Area: Roadways | Utilities | Ground Transportation Center



## Design-Build Joint Venture: Skanska Halmar JFK JV

- Will serve as the Lead Contractor and hold prime contract with PANYNJ
- Responsible for managing the design
- Responsible for providing construction services for the Design-Build contract.



## Lead Designer: Parsons Transportation Group

- Will serve as lead designer and Engineer-of-Record
- Will manage key subconsultants for additional areas.



## Construction Quality Assurance: KS Engineers, P.C.

- General oversight and audit of Construction Quality Control
- Inspection, materials receiving and testing
- Preparation/submission of acceptance packages

15

# Central Terminal Area: Roadways | Utilities | Ground Transportation Center

## High-Level Schedule

					2024				2025				2026				2027			
Activity	Q1	Q2	Q3	Q4	Q1	Q2	Q3	Q4	Q1	Q2	Q3	Q4	Q1	Q2	Q3	Q4	Q1	Q2	Q3	Q4
LNTP Work																				
Contract Award																				
Design																				
Roadway and Site Work																				
GTC Work																				
Substantial Completion																				
Punchlist/ Closeout																				
Final Acceptance																				

16



# Central Terminal Area: Roadways | Utilities | Ground Transportation Center

## Category I & II Work Opportunities

[SupplierDiversity\\_JFK.Parsons@parsons.com](mailto:SupplierDiversity_JFK.Parsons@parsons.com)

Complete questionnaire by scanning QR code or visiting:

<https://forms.office.com/r/13q6rttBiP>



### Meet the Prime

JFK Roadways, Utilities, and Ground Transportation Center  
M/W/SDV/LBE Opportunities

Greater Nexus, 80-14 Parsons Blvd,  
4th Floor, Jamaica NY 11432

April 19, 2023  
6 pm - 8 pm

In-person only

#### Category I Opportunities

- Design Quality Auditor
- Admin/Clerical
- M/WBE Outreach/Compliance
- Local Delivery Service
- Document Control
- Transportation Services
- P6 Scheduling
- Corporate Housing
- Food Service
- Cleaning Service

#### Category II Opportunities

- Drafting (Civil 3D)
- Miscellaneous Structures
- Irrigation
- Bridges
- Rainwater Harvesting
- Roadway
- Storm Drainage
- Electronics
- Communications/Network/Security
- Water Quality
- Intelligent Transportation Systems
- Thermal Distribution Systems/Pipe Stress Analysis
- Environmental Sustainability
- Fire Protection
- Fire Alarm
- Pavement/Curb Inspections
- Bridge Inspections
- Survey
- Air Installation Report
- Temporary Works
- Estimating



Scan QR code or visit <https://forms.office.com/r/13q6rttBiP> to register

SKANSKA | PARSONS  
JFK JOINT VENTURE

PARSONS  
PORT AUTHORITY  
NEW YORK NEW JERSEY  
TRANSPORTATION

JFK  
A NEW  
JFK  
JAMAICA

PORT AUTHORITY  
NY NJ  
AIR LAND RAIL SEA

17

# Central Terminal Area: Roadways | Utilities | Ground Transportation Center

## Category III Work Opportunities

[SkanskaHalmarJFKJV@skanska.com](mailto:SkanskaHalmarJFKJV@skanska.com)

### Meet the Prime

JFK Roadways, Utilities, and  
Ground Transportation Center  
M/W/SDV/LBE Opportunities

Greater Nexus, 80-14  
Parsons Blvd, 4th Floor,  
Jamaica NY 11432

April 26, 2023  
8 pm - 8 pm

In-person only

#### Category III Opportunities

##### Construction Services

- Asphalt Repairs
- Bird Repellent Systems
- Curb & Sidewalk
- Demolition
- Electrical
- Environmental Services
- Fire Protection
- Flooring
- Geotechnical Services
- Gypsum Board
- HVAC
- Landscaping
- Line Painting
- Pavement Milling
- Masonry
- Misc. Metals
- Painting
- Plumbing
- Signage
- Structural Steel
- Survey
- Tile
- Utility Work
- Vibration Monitoring
- Waterproofing

##### Jobsite Services

- Fencing
- Hazardous Material Disposal / Trucking
- Office Rentals / Trailers
- Portable Toilets
- Photography

##### Supplies

- Concrete
- Precast Concrete
- Equipment
- Fuel
- Construction Materials
- Safety
- Tools & Hardware
- Food Service



Scan QR code or visit <https://forms.office.com/r/13q6rttBiP> to register

SKANSKA | PARSONS  
JFK JOINT VENTURE

PARSONS  
PORT AUTHORITY  
NEW YORK NEW JERSEY  
TRANSPORTATION

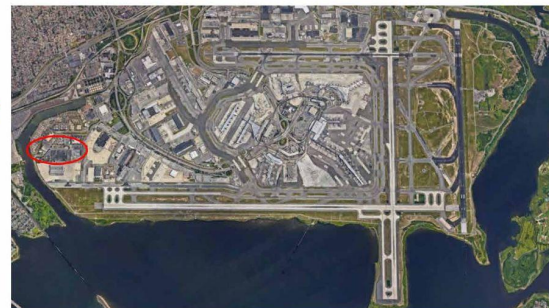
JFK  
A NEW  
JFK  
JAMAICA

PORT AUTHORITY  
NY NJ  
AIR LAND RAIL SEA

18

## Construction Support Services

- **GOAL:** Reduce construction impacts on local community
  - Concrete production at on-site batch plant
  - Concrete crushing facility to recycle construction debris
  - Barging operation to move construction material to and from the airport via local waterways
  - Starting operations Late Q3 2023



19

PORT AUTHORITY  
NY NJ  
AIR LAND RAIL SEA



# JFK Solar

- **Largest onsite solar + storage system in NYS**
- **Long-Term Parking Lot: carport canopy with solar panels, providing covered parking to approx. 3,000 parking spaces.**
- **12.3-MW system includes battery storage to provide enhanced resilience to AirTrain JFK**
- **Serve low-income residents who may be eligible to receive utility bill credits through NYS community solar program**
- **Construction to begin in 2023**

**LGA Airport  
Rooftop Solar Project**



20

**A NEW  
JFK**  
REDEVELOPMENT PROGRAM

**PORT  
AUTHORITY  
NY NJ**  
AIR LAND RAIL SEA

## Building 111 Grab-and Go Cafeteria

Seeking a qualified minority owned business enterprise (MBE) to manage, operate, and maintain a **Grab-and-Go cafeteria at Building 111 at John F. Kennedy International Airport.**

- 400 sq. ft. grab-and-go cafeteria
- Breakfast, lunch, snacks, and beverages
- 7:00 am to 3:00 pm, Monday through Friday, excluding holidays.
- All food to be prepared off-site and transported to Building 111 in a temperature-controlled environment. No food will be prepared in the space.
- Two vending machines to be located directly outside of the space.

### PRE-PROPOSAL OVERVIEW PRESENTATION May 18 at 6 PM

JFK Redevelopment Community Information Center 144-33 Jamaica Ave.  
Register at: [tinyurl.com/JFKBldg111Opportunity](https://tinyurl.com/JFKBldg111Opportunity)

### IN-PERSON SITE VISIT May 24 at 11 AM

Building 111 John F. Kennedy International Airport  
To RSVP, email: [B111Cafeteria@panynj.gov](mailto:B111Cafeteria@panynj.gov)

**Grab-and-Go Cafeteria at John F. Kennedy International Airport**

The Port Authority of NY & NJ is seeking a qualified minority-owned business enterprise (MBE) to manage, operate, and maintain a **Grab-and-Go cafeteria at Building 111 at John F. Kennedy International Airport.**

The 400 sq. ft. grab-and-go cafeteria should offer breakfast, lunch, snacks, and beverages from 7:00 am to 3:00 pm, Monday through Friday, excluding holidays. All food is to be prepared off-site and transported to Building 111 in a temperature-controlled environment. No food will be prepared in the space. Additionally, the selected business will be requested to provide two vending machines to be located directly outside of the space.

**PRE-PROPOSAL OVERVIEW PRESENTATION**  
**May 18 at 6 PM**  
JFK Redevelopment Community Information Center  
144-33 Jamaica Ave.  
Jamaica, NY  
Register at: [tinyurl.com/JFKBldg111Opportunity](https://tinyurl.com/JFKBldg111Opportunity)

**IN-PERSON SITE VISIT**  
**May 24 at 11 AM**  
Building 111  
John F. Kennedy International Airport  
To RSVP, email: [B111Cafeteria@panynj.gov](mailto:B111Cafeteria@panynj.gov)

**PROPOSAL DUE DATE**  
**June 16**

Scan the QR code to view the invitation for offers.

This opportunity is available **only** to certified MBE firms, with a **strong preference** for a local MBE. For more information about MBE certification, visit [www.panynj.gov/work-with-us/work-with-panynj/](https://www.panynj.gov/work-with-us/work-with-panynj/)

**PORT AUTHORITY NY NJ**  
**A NEW JFK**  
**PORT AUTHORITY NY NJ**

21

**A NEW  
JFK**  
REDEVELOPMENT PROGRAM

**PORT  
AUTHORITY  
NY NJ**  
AIR LAND RAIL SEA

## Team Member Recognition

City & State recognized **Rachelle Antoine** with the **Above & Beyond Award** for her work at the JFK Redevelopment Program, as one of 50 remarkable women who are improving New York.



**THE 2023 ABOVE & BEYOND: WOMEN**

Recognizing 50 remarkable women who are improving New York.

**RACHELLE ANTOINE**

Regional Alliance for Small Contractors recognized **Hersh Parekh** with the **M/WBE Advocate of the Year Award**.



22

**A NEW  
JFK**  
REDEVELOPMENT PROGRAM

**PORT  
AUTHORITY  
NY NJ**  
AIR LAND RAIL SEA

# Diversity in Contracting and Local Workforce Updates



AIR LAND RAIL SEA



## M/WBE & LBE Participation – Monthly Public Reporting

Crescent Consulting & R.F. Wilkins Consultants

## MWBE & LBE Participation: through March 2023

The Port Authority of NY & NJ					
Type of Firm	Awards (thru 03/31/2023) \$643M		Payments (thru 03/31/2023) \$344M		No. of Firms
MBE (All Ethnicities)	\$109M	17%	\$76M	22%	143
MBE: Asian Pacific/Indian	\$54M	8%	\$43M	12%	57
MBE: Black/African American	\$32M	5%	\$23M	7%	41
MBE: Hispanic/Latino	\$23M	4%	\$10M	3%	45
WBE (Caucasian Women)	\$42M	6%	\$31M	9%	79
LBE Tier 1	\$30M	5%	\$15M	4%	31
LBE Tier 2	\$13M	2%	\$12M	4%	20

The New Terminal One / T1					
Type of Firm	Awards (thru 03/31/2023) \$2.2B		Payments (thru 03/31/2023) \$784M		No. of Firms
MBE (All Ethnicities)	\$447M	20%	\$100M	13%	150
MBE: Asian Pacific/Indian	\$90M	4%	\$31M	4%	61
MBE: Black/African American	\$133M	6%	\$39M	5%	52
MBE: Hispanic/Latino	\$224M	10%	\$30M	4%	36
MBE: Native American	\$400K	0.1%	\$0	0%	1
WBE (Caucasian Women)	\$176M	8%	\$42M	5%	78
LBE Tier 1	\$100M	5%	\$20M	3%	32
LBE Tier 2	\$110M	5%	\$1M	0.1%	20



# MWBE & LBE Participation: through March 2023

Delta Air Lines / JFKIAT / T4						
Type of Firm	Awards (thru 03/31/2023) \$903M		Payments (thru 03/31/2023) \$456M		No. of Firms	
MBE (All Ethnicities)	\$202M	22%	\$130M	29%	111	
MBE: Asian Pacific/Indian	\$70M	7%	\$31M	7%	34	
MBE: Black/African American	\$45M	5%	\$21M	5%	40	
MBE: Hispanic/Latino	\$87M	10%	\$78M	17%	36	
MBE: Native American	\$52K	0%	\$0	0%	1	
WBE (Caucasian Women)	\$119M	13%	\$54M	12%	76	
LBE Tier 1	\$27M	3%	\$9M	2%	22	
LBE Tier 2	\$71M	8%	\$44M	10%	35	

JFK Millennium Partners / T6						
Type of Firm	Awards (thru 03/31/2023) \$1.3B		Payments (thru 03/31/2023) \$435M		No. of Firms	
MBE (All Ethnicities)	\$28M	2%	\$16M	4%	43	
MBE: Asian Pacific/Indian	\$9M	1%	\$7M	2%	11	
MBE: Black/African American	\$4M	0.3%	\$3M	1%	16	
MBE: Hispanic/Latino	\$14M	1%	\$6M	1%	15	
MBE: Native American	\$52K	0%	\$2.5K	0%	1	
WBE (Caucasian Women)	\$18M	1%	\$6M	1%	34	
LBE Tier 1	\$1.4M	0.1%	\$1.2M	0.3%	8	
LBE Tier 2	\$39M	3%	\$0	0%	5	

26



# MWBE & LBE Participation: through March 2023

American Airlines / T8						
Type of Firm	Awards (thru 03/31/2023) \$386M		Payments (thru 03/31/2023) \$338M		No. of Firms	
MBE (All Ethnicities)	\$94M	24%	\$76M	23%	72	
MBE: Asian Pacific/Indian	\$40M	10%	\$34M	10%	23	
MBE: Black/African American	\$12M	3%	\$11M	3%	23	
MBE: Hispanic/Latino	\$41M	11%	\$31M	9%	23	
MBE: Native American	\$505K	0%	\$0	0%	3	
WBE (Caucasian Women)	\$74M	19%	\$56M	17%	41	
LBE Tier 1	\$16M	4%	\$16M	5%	20	
LBE Tier 2	\$17M	5%	\$14M	4%	17	

Each month, updated MWBE & LBE Participation Data will be posted on ANewJFK.com.

- Awards & Payments to MBEs as well as a breakdown by Ethnicity
- Awards & Payments to WBEs
- Awards & Payments to LBEs Tier 1
- Awards & Payments to LBEs Tier 2
- Names of all LBEs (Tier 1 & 2) that have been awarded contracts

27



**A New JFK**  
**Local Construction Workforce Participation - Reporting**  
Crescent Consulting



# Terminal 1 Local Workforce Placements

## Tier 1

A total of 25 placements have been made

Trade	Zip Code
20 Laborers 3 Dock builders 1 Operating Engineer 1 Lather - 1 female -	11414, 11418, 11420, 11422, 11423, 11433, 11436, 11559, 11691

Project Totals	
Local Skilled – Tier 1	9.3%
Local Laborers – Tier 1	12.9%
Local Skilled – Tier 2	7.7%
Local Laborers – Tier 2	9.2%

Additional placements made from Tier 2 are pending confirmation and will be provided at the next JFKR Advisory Council Meeting.  
We continue to work with the unions on a regular basis to help facilitate local workforce participation.

29



# Terminal 4 Local Workforce Placements

## Tier 1

A total of 59 placements were made

Trade	Zip Code
56 Laborers - 5 females -	11412, 11413, 11414, 11419, 11420, 11422, 11423, 11429, 11434, 11435, 11691
3 Carpenters - All male -	11414, 11417, 11691

## Tier 2

A total of 21 placements were made

Trade	Zip Code
21 Laborers - 3 females -	11357, 11358, 11368, 11372, 11373, 11377, 11385, 11566

Project Totals	
Local Skilled – Tier 1	7.5%
Local Laborers – Tier 1	16.2%
Local Skilled – Tier 2	11.7%
Local Laborers – Tier 2	12.2%

Additional placements made from Tier 2 are pending confirmation and will be provided at the next JFKR Advisory Council Meeting.  
We continue to work with the unions on a regular basis to help facilitate local workforce participation.

30



# Terminal 6 Local Workforce Placements

## Tier 1

A total of 4 placements were made

Trade	Zip Code
2 Laborers 1 Timberman 1 Steamfitter - All male -	11435, 11414, 11559, 11692

Project Totals	
Local Skilled – Tier 1	0.7%
Local Laborers – Tier 1	8.9%
Local Skilled – Tier 2	0.7%
Local Laborers – Tier 2	5.2%

Additional placements made from Tier 2 are pending confirmation and will be provided at the next JFKR Advisory Council Meeting.  
We continue to work with the unions on a regular basis to help facilitate local workforce participation.

31



# Terminal 8 Local Workforce Placements

## Tier 1

A total of 169 placements were made

Trade	Zip Code
169 Laborers - 156 male & 13 female -	11414, 11416, 11417, 11418, 11419, 11420, 11421, 11422, 11432, 11433, 11434, 11435, 11003, 11580, 11691

Project Totals	
Local Skilled – Tier 1	11.7%
Local Laborers – Tier 1	22.4%
Local Skilled – Tier 2	9.2%
Local Laborers – Tier 2	8.3%

Additional placements made from Tier 2 are pending confirmation and will be provided at the next JFKR Advisory Council Meeting.  
We continue to work with the unions on a regular basis to help facilitate local workforce participation.

32



# Aeroterm Local Workforce Placements

## Tier 1

A total of 43 placements were made

Trade	Zip Code
43 Laborers	11414, 11416, 11423, 11433, 11580, 11691

Project Totals	
Local Skilled – Tier 1	9.9%
Local Laborers – Tier 1	15.7%
Local Skilled – Tier 2	7.6%
Local Laborers – Tier 2	28.3%

Additional placements made from Tier 2 are pending confirmation and will be provided at the next JFKR Advisory Council Meeting.  
We continue to work with the unions on a regular basis to help facilitate local workforce participation.

33



# Total Local Workforce Placements

## Tier 1

A total of 300 placements were made

Trade	Zip Code
290 Laborers	11412, 11413, 11414,
3 Carpenters	11416, 11417, 11418,
3 Dock builders	11419, 11420, 11421,
1 Operating Engineer	11422, 11423, 11429,
1 Timberman	11432, 11433, 11434,
1 Steamfitter	11435, 11003, 11580, 11691
1 Lather	
- 19 females -	

## Tier 2

A total of 21 placements were made

Trade	Zip Code
21 Laborers	11357, 11358, 11368,
- 3 females -	11372, 11373, 11377,
	11385, 11566, 11559,

Additional placements made from Tier 2 are pending confirmation and will be provided at the next JFKR Advisory Council Meeting.  
We continue to work with the unions on a regular basis to help facilitate local workforce participation.

34





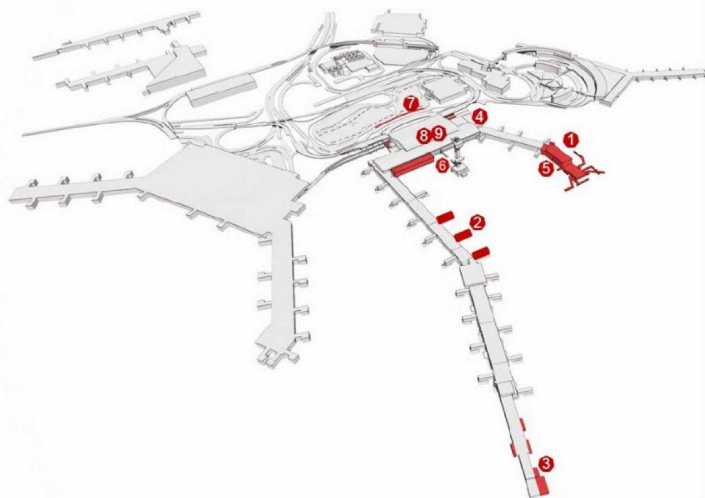
## JFK TERMINAL 4 EXPANSION | PROGRAM UPDATE

JFK REDEVELOPMENT ADVISORY COUNCIL COMMITTEE MEETING

May 08, 2023

| JFKIAT |

### PROGRAM | OVERVIEW

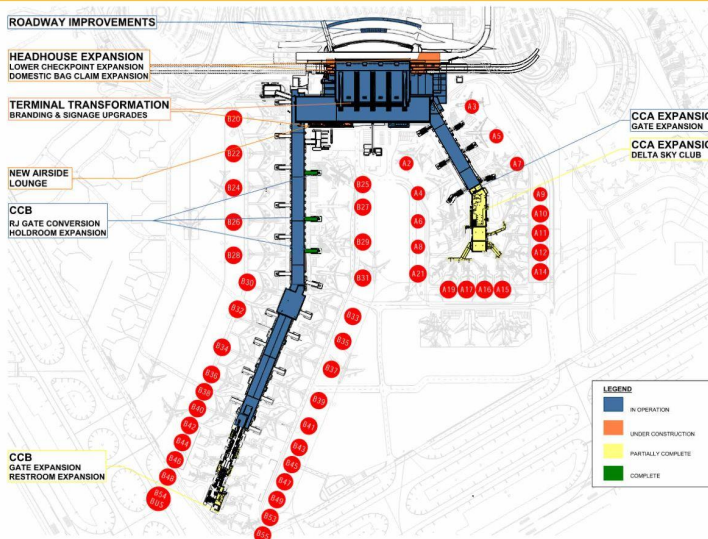


The current Terminal 4 expansion program is a \$1.5B construction program comprised of the following nine main elements:

1. Concourse A Extension
2. Concourse B Wide-Body Gate Conversion
3. Concourse B RJ Gate Conversion and Holdroom Expansion
4. Headhouse Expansions
5. Concourse A Delta Sky Club
6. New Airside Lounge
7. Roadway Improvement
8. Terminal Transformation
9. One JFK Branding and Signage Upgrades

| JFKIAT |

## CONSTRUCTION UPDATE | AIRSIDE CONSTRUCTION



### Concourse A Extension

Activation of new Gates:	January 2023
Status:	Complete
Full Activation (Levels 2 - 4):	July 2023
Status:	On Time



### Concourse B Expansion

South Gates and New Restrooms:	December 2022
Status:	Complete
North Gates	July 2023
Status:	On Time



### New Airside Lounge

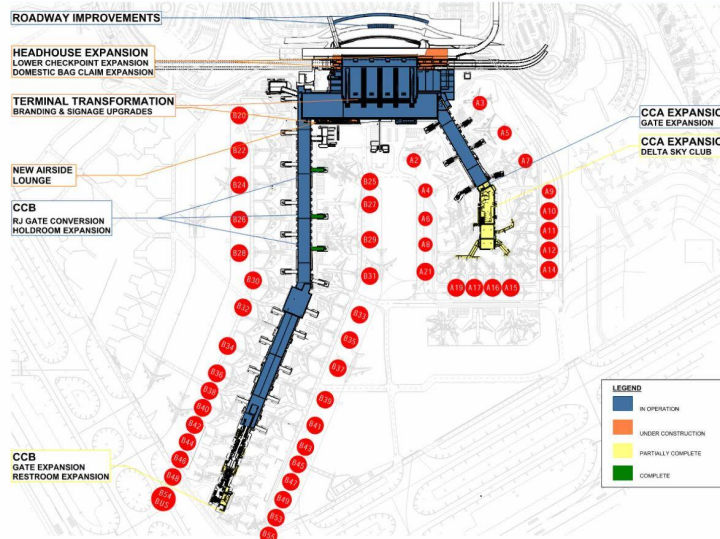
Activate new Airside Lounge:	1Q24
Status:	On Time



| JFKIAT |



# CONSTRUCTION UPDATE | LANDSIDE



## Roadway Improvements

Activate new curb frontage & Wayfinding Signage:	Spring 2023
Status:	Complete



## Headhouse Expansion

Activate Expanded Checkpoint Queuing Area:	July 2023
Status:	On Time



Activate New Domestic Baggage Claim:	September 2023
Status:	On Time

JFK IAT



## KEY MWBE AND LOCAL PARTNERS

### Deutscher & Daughter, Inc.

PANYNJ WBE Certified, Jamaica, NY

Approximate contract value to date = \$220,000



"As a Queens local, woman owned small business enterprise, we are beyond excited to be a part of the new Delta Terminal 4 at JFK. We are honored to be supplying doors, frames and electronic access control hardware that helps keep our local NYC residents, and all global travelers to NYC, safe as they set out and return home from their journeys."

Danielle Deutscher Sumpman  
Co-Owner

### Cross Island Mechanical, Corp.

PANYNJ MBE Certified, Ridgewood, NY

Approximate contract value to date = \$7,000,000



As a local, minority-owned business, we greatly appreciate the opportunity to work with Delta to deliver a high quality and fast-track project. We are proud to demonstrate to all stakeholders the true capabilities of a qualified local and minority owned business. We look forward to continuing our relationship with Delta and PANYNJ.

Kristopher Shaw  
President

JFK IAT



## OSHA 30 TRAINING PROGRAM | SUMMARY

### Total Number of Applicants

406

### Cohort 1 and 2 Graduates

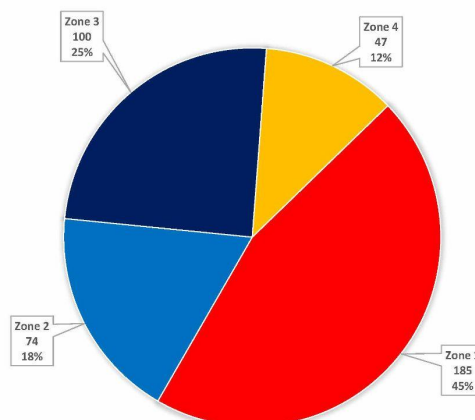
73

### Graduates From LBE Zone 1

40

### Graduates From LBE Zone 2

5



JFK IAT



## OSHA 30 TRAINING PROGRAM | GRADUATES



## OSHA 30 TRAINING PROGRAM | GRADUATES



| JFKIAT |

DELTA

## OSHA 30 TRAINING PROGRAM | GRADUATES



### TERRELL ARTIS

Terrell Artis is a great example of a successful young man with a hard work ethic and professional approach to furthering himself. He has demonstrated his commitment to training and development by completing our Security Guard Training, OSHA 30 Training, and Flagger Training programs. His dedication to learning new skills was impressive and he showed great enthusiasm for the courses we offered him. Furthermore, while waiting for official credentials from state agencies, Terrell continued to search for work opportunities in order to support his wife and family; ultimately finding employment with Queensbridge Cleaning where he has since become an invaluable asset.

| JFKIAT |

DELTA



## OSHA 30 TRAINING PROGRAM | GRADUATES



### IRENE BOSTON LENNON

Irene Boston Lennon and her husband Vernon Lennon are two of the most dedicated members of our capacity building program. Irene joined us in the second cohort of the security training, arriving early each day despite having a young child to care for. She successfully completed the course and then signed up for OSHA 30 training, where she was placed into the first cohort. After completing that class, she brought Vernon to us so he could be enrolled in our next OSHA 30 class. Even with all their family obligations - including babysitting issues - both Irene and Vernon managed to finish this rigorous program on time and are now awaiting their credentials from OSHA!

The dedication that these two have shown is truly inspiring; it's not easy juggling work responsibilities while also caring for a young child but they made it happen! Their commitment has been an example to others who may feel overwhelmed by life's demands or unsure if they can manage multiple tasks at once; we hope that more people will follow suit after seeing what Irene & Vern accomplished through sheer determination alone!



## TERMINAL | TRANSFORMATION

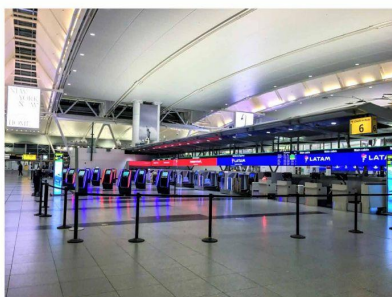
The Terminal 4 Transformation is a component of the Terminal 4 Expansion and Redevelopment program. This program, at \$154m is the basis for Terminal enhancements which will optimize areas of the Terminal holistically. These elements focus on People, Processes, Place and Technology. Together with the Delta Redevelopment and expansion, the Terminal Transformation program is an integral part of the overall Airport Vision Plan of transforming JFK into a World Class airport. Areas of Transformation have been fundamentally prioritized within the \$1.5b Terminal 4 Expansion plan to match this vision.



### The Transformation Work is comprised of the following seven main elements:

1. AirTrain Infill and Ticket Desk Relocations
2. Amenities and Restrooms
3. Departures Hall Renovations
4. Artwork Program
5. Concourses A & B Holdroom Renovations
6. Commercial (Concessions) Upgrade
7. One JFK Branding and Signage Upgrades

## TERMINAL | TRANSFORMATION

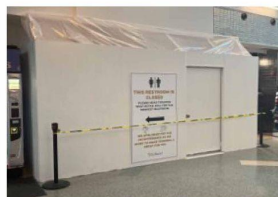


### Departures Level Renovations Program:

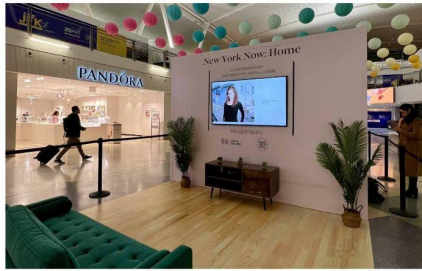
- Phased renovation of five (5) Airline Check In Rows to include Self Serve Kiosks, Bag Drops and new Counters
- Project was awarded to the VRH Construction in October 2022
- Construction started February 2023
- Row 6 completed April – turn over for Ops May
- Construction pause for summer – resume Sept.

### Restroom Renovation Program:

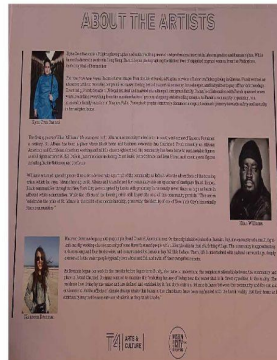
- Full demolition and renovation of eighteen (18) existing restrooms which includes upgraded finishes, ceiling, floors and walls
- Project was awarded to Holt Construction in November
- Construction started March 2023
- 1<sup>st</sup> set of restrooms anticipated for completion in July 2023



# TERMINAL | TRANSFORMATION



| JFKIAT |



## Artwork Program:

- Terminal 4 Arts & Cultural Committee established with members from IAT, Port Authority and Delta, curated by MCNY
- Roadmap and programming was presented to stakeholders
- First exhibit w/MCNY launched on March 29 – New York Now: Home
- Contemporary photography exhibit featuring several local artists

## Restroom Artwork Integration Program:

- Community engagement and outreach for local artists with JCAL, MCNY, Queens Museum & Dack was in March
- Design brief and RFP issued April
- Interviews with selected local artists have been conducted
- Next step is to award the artists and present to Port Authority the chosen art integrations

## KEY MWBE AND LOCAL PARTNERS

### Bonanza Contracting, LLC

PANYNJ WBE Certified, Jamaica, NY

Approximate contract value to date = \$250,000



"New Restrooms for the New JFKI"

Lateef Belfor  
Principal & Operator

### Insignia Renovations, Inc.

PANYNJ MBE Certified, Whitestone, NY

Approximate contract value to date = \$300,000



"Insignia Renovations was very excited to collaborate with ICM Amadeus & VRH Construction with the installation of the first of their kind in the USA Automatic Bag Drops & SSK Units (Kiosks). We look forward to what the future will bring."

Margaret Gibbons  
President, Insignia Renovations

| JFKIAT |



## JFKIAT | 4GOOD

List of Award Recipients	Month
American Diabetes Association - Queens Chapter	January/February
Venture House	March/April
Virgil Grissom Middle School	May/June
Bethany Baptist Church	July/August

## JFKIAT Donates Over \$15K to Queens Organizations:

Together with its concession operators at Terminal 4, JFKIAT has coin collection boxes throughout the terminal to inspire passengers and staff to donate change to various charities.

In the first quarter of 2023, through the generosity of our passengers and employees, JFKIAT raised over \$15,000, which was donated to the American Diabetes Association – Queens Chapter, and Venture House.

| JFKIAT |





JFKIAT

DELTA

## JFKIAT STREET MARKET | PROOF OF CONCEPT – POST EVENT DEBRIEF

JFKIAT partnered with NYS Department of Agriculture and Markets/Taste NY and the Queens Economic Development Corporation/QEDC to conduct an outreach for vendors to participate at the Street Market trial. The following events leading to the trials occurred:

- Email outreach to over 2,000 locally sourced/based brands and vendors
- Two information sessions about the opportunity with over 100 vendors in attendance
- Airport tours followed by a session called "Airport 101 for Local Vendors"

Over 20 different vendors from Queens, Manhattan, Brooklyn, Bronx and Long Island, ended up participating at the event, generating the following results:

### Wins

- Sales
- Drove CX and employee engagement
- Relationship with NYSDAM and QEDC
- A number of vendors are working on wholesale deals with our Primes:

### Challenges / Lessons Learned

- Escort costs
- Logistics, storage and coordination
- Set up type
- Exhibit space in retail hall vs. holdroom activation



JFKIAT

DELTA

## JFKIAT STREET MARKET | SHOWCASING THE REGIONS OF NY



Bennett's Deli and Sandwich Co.  
Bottle and Beyond  
Buttersoft Essentials  
Colorful NY  
HoneyGramz  
InStyle Boutique  
Jewelry and Clary Works  
Lavender by the Bay  
Mazi + Zo  
Mother Earth Juice Bar

Bronx  
Brooklyn  
Queens  
Brooklyn  
Queens/Nassau  
Queens  
Brooklyn  
Queens/Suffolk  
Manhattan  
Queens

My Big Fat Cookie  
Oh Sweet Mason  
Pixie Doodle Farm  
Pudding Pan Desserts  
Relista  
Scent by Heaven  
Selenia's Gourmet  
Sweet Vegan  
Tembo NYC  
Woke Creations  
Yo Pitts

Nassau  
Brooklyn  
Brooklyn  
Brooklyn  
Nassau  
Queens  
Queens  
Manhattan  
Manhattan  
Queens  
Bronx

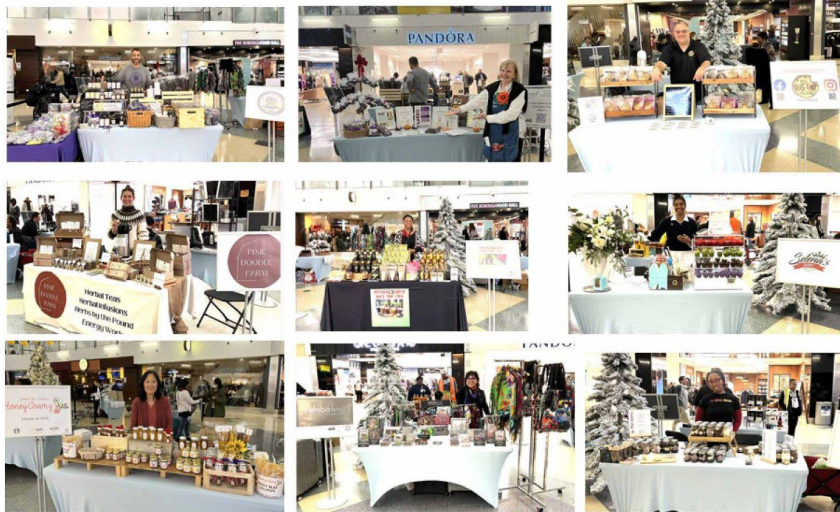
### Collaboration and Social Enterprise



JFKIAT

DELTA

## JFKIAT STREET MARKET | NOVEMBER (17 LOCAL ARTISANS/MAKERS)



| JFKIAT |

DELTA

## JFKIAT STREET MARKET | DECEMBER (AIRPORT PRESS IMAGE)



| JFKIAT |

DELTA

**JFK** Millennium  
Partners

JFK Redevelopment Community Advisory Council

May 8, 2023



## **JFK Terminal 6 Redevelopment Project**

### *Overview*

- \$4.2 billion redevelopment project, with an anticipated development cost of \$2.8 billion
- 1.2 million ft<sup>2</sup> of terminal complex, critical supporting roadways, utilities, aircraft apron, and ground transportation center
- Supplier Diversity Initiatives

2021

- Port Authority project approval

2022

- Financial close
- Operations of T7 commence

2023/  
2024

- Ground-breaking
- Phase I construction of new T6

2026

- Phase I completion: central hall, first new gates open; demolition of T7

2026-  
2028

- Phase II construction

2028

- Phase II complete: additional gates open
- Full terminal occupancy

### **Over 300 people celebrated the ground-breaking of the new Terminal 6 on February 23, 2023**

- Featured guests: Governor Kathy Hochul; Port Authority Executive Director Rick Cotton; Vantage Airport Group, JPM, and JetBlue executives; Elected officials and Members of the Airport and Local communities



### **Project Update- Site Preparation**



#### **Pile Driving & Foundation**

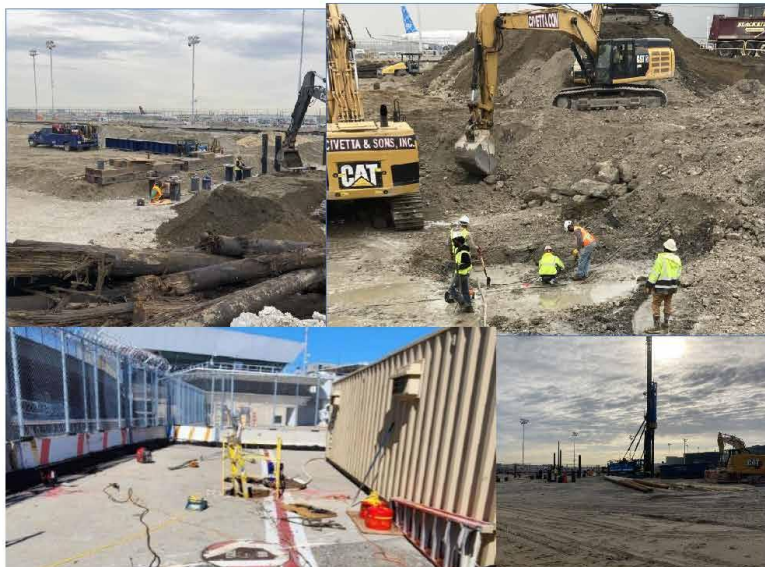
- ✓ Work currently underway includes production piling, ongoing site clearing, resolving utility conflicts, conducting and relocating the AOA fence in order to expand site capture.

#### **Decommission of Hydrant Fuel System**

- ✓ This includes isolating and draining down hydrant fuel systems, conducting asbestos abatement of the hydrant fuel pipe, extracting contaminated soil and water, and capping the pipe for removal along with the pavement.

#### **Other Work**

- ✓ Yellow Garage signage, paving and line striping in preparation for activation.
- ✓ Yellow Garage fire protection and pre-construction meetings for Roadways and Utilities Package.





## The New Terminal 6 – Opening early 2026



### Upcoming Procurement Bid Schedule

May Procurements  
30 Days



BP #	Bid Package Description	Issue Date	Due Date
26E	Lighting	5/26/2023	8/4/2023
27A	Communications, Paging System, Electronic Digital Systems, Queue Monitoring System	5/26/2023	8/4/2023
27B	Local Area Network Parts & Smarts, Voice Over IP System, Wi-Fi System Parts & Smarts/Operator	5/26/2023	8/4/2023
27D	Radio DAS	5/26/2023	8/4/2023
27E	Cellular DAS	5/26/2023	8/4/2023
28A	Fire Alarm	5/26/2023	8/4/2023
28B	Security System	5/26/2023	8/4/2023
26C	Electrical - Secondary	5/26/2023	8/3/2023
23E	HVAC - Water - Fitout	5/26/2023	8/4/2023

**JFK** Millennium  
Partners

### Project Success Stories

#### Multiple M/WBE, LBE, SDVOB Contracts Have Been Awarded



**\$1.9m Award**  
Demolition & Abatement  
CAT III Procurement  
WBE Contractor



**\$1.9m Award**  
Architectural Services  
CAT II Procurement  
MBE Design Group



**\$2.4m Award**  
Site Safety Manager  
CAT III Procurement  
MBE/SDVOB Contractor

**JFK** Millennium  
Partners





## OUTREACH HIGHLIGHTS, Ctd.

- SDVOB Targeted Outreach (Mar. 14)
- AIM 2023 National Women's Leadership Forum (Mar. 16)
- NYS Association of Black, Puerto Rican, Hispanic, and Asian Legislators (Feb. 17-19)



## Project Success Stories

### Multiple M/WBE, LBE, SDVOB Contracts Have Been Awarded Ctd.



**\$1.4m Award**  
 Surveying  
 CAT III Procurement  
 MBE Contractor



**Unit Price Contract**  
 SIDA Security Escort  
 CAT III Procurement  
 WBE/LBE Contractor



## OUTREACH HIGHLIGHTS

- Matchmaking with Prime Contractors (May 3)
- Pre-qualification Meetings (Apr. 5; Mar. 8; Feb. 14)
- ASCEND Regional Program Outreach (Mar. 9)





# Our World-Class Team

FINANCIAL SPONSORS	   
CAPITAL PROJECT DELIVERY	     
DESIGN-BUILDER	 
MASTER CONCESSIONAIRE	

## THE NEW TERMINAL ONE JFK INTERNATIONAL AIRPORT

JFKR Advisory Council Meeting – 5/8/2023



JFK Terminal 6 Redevelopment Project- ACDBE Concessions Program

## Upcoming Outreach (May-July.)

- ✓ ACDBE Information Sessions
  - Discussions on the 100,000 sqft T6 Concessions Program
  - Joint Ventures and Stand alone ACDBEs
- ✓ ACDBE Joint Venture Matchmaker
  - Learn the benefits of becoming an ACDBE joint venture
  - Learn how to partner with prime concessionaires



## THE NEW TERMINAL ONE JFK INTERNATIONAL AIRPORT

JFK Redevelopment Advisory Council Meeting

May 8, 2022



# Leadership U for Humanity

- NTO is proud to announce its partnership with the Korn Ferry Charitable Foundation to deploy *Leadership U for Humanity* to develop and empower a class of **30 dedicated leaders** at no cost.
- Participants will develop stronger leadership and business skills, expand their view of career growth opportunities and build new peer or mentor relationships with the *Leadership U for Humanity* network.
- NTO is grateful for the support of the following Community Partners which will nominate interested applicants:



**Greater Jamaica Development Corporation**



**Rockaway Development & Revitalization Corporation**



**Queens Chamber of Commerce**



**York College**

- Nomination Deadline: **May 24**
- Program Launch Date: **June 9**

**THE NEW TERMINAL ONE**  
JFK INTERNATIONAL AIRPORT



## Eligibility:

- Have associate, bachelor's or vocational degree and/or proven managerial experience
- Ideal candidates will have 4-15 years of work experience and/or 3-7 years managerial experience
- Be from underserved group

## Program Benefits:

- Personalized traits assessment and development
- Individual coaching
- Virtual classroom instructor-led learning
- Self-guided learning with access to over 3,000 e-learning modules
- Receive e-verifiable badge for social media

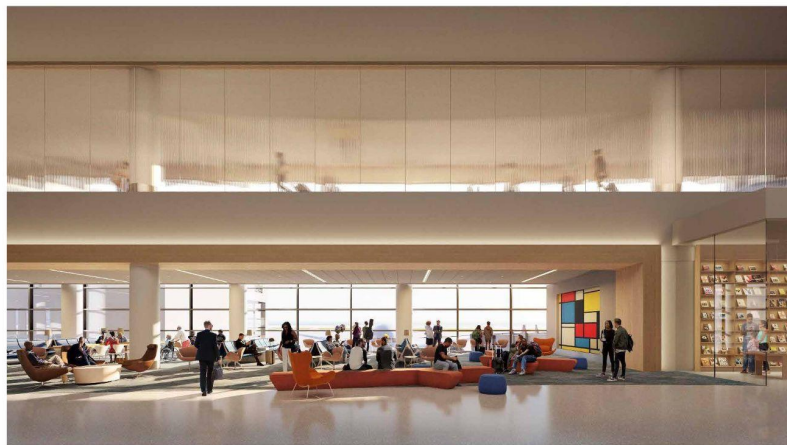
## Time Commitment:

- Average time required for the curriculum is **9 hours per month for 6 months**.

JFKR Advisory Council Meeting – 5/8/2023

## Project Overview

- Began Construction Summer of 2022
- The reimagined terminal will have state-of-the-art technology, best sustainability practices, public art, local concessions, and revamped roadways to create a transformative and positive world-class passenger experience
- The construction is in phases, with the arrivals and departures hall and 14 new gates set to open in 2026, just in time for the NY/NJ FIFA World Cup
- Our extensive partnerships with the community and labor will drive historically high MWBE participation goals and diversity and deliver jobs, intentional social impact, and real economic opportunities for Southeast Queens and the surrounding communities for generations to come



**THE NEW TERMINAL ONE**  
JFK INTERNATIONAL AIRPORT

JFKR Advisory Council Meeting – 5/8/2023

## Project Update

- The project continues on-time and on budget
- Notable **construction milestones** include:
  - Green Garage Demolition (RCGA, MBE Tier 1)
  - Terminal 2 Abatement and Demolition (R. Baker, MBE and International Asbestos Removal, WBE)
  - 95% Design Completion
  - AirTrain Protection Enclosure (Creative Construction, MBE Tier 1)
  - May 1<sup>st</sup> Delivery of Steel
- NTO has engaged over **252** of local and/or minority firms on the project and continues to recruit more local and minority firms as contractors and professional service providers. **73%** of payments have flowed to minority firms
- NTO is pleased to report that **47.6%** of construction laborers are minority and **18.1%** are local residents
- NTO has partnered with Korn Ferry, the leading executive search firm, to offer residents an exciting opportunity to participate in *Leadership U for Humanity*, a 6-month leadership and career development initiative



**THE NEW TERMINAL ONE**  
JFK INTERNATIONAL AIRPORT

JFKR Advisory Council Meeting – 5/8/2023



## Spotlight on Local Partners



Erin Pluguez, President

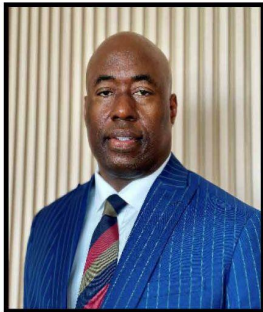


MWBE  
Jamaica, NY (Tier 1)

Provides clerical and  
administrative support services

- **EP Administrative Services, Inc.** is a local Hispanic woman owned firm providing clerical and administrative support services.
- Erin Pluguez, **EP** President, had over 20 years of administrative experience, when she sought PANYNJ MWBE certification in 2022
- **EP** is a subconsultant providing administrative support (email correspondence, scheduling meetings, phone system setup and maintenance and reporting)
- **Contract Amount:** \$75k+
- [www.epadministrative.com](http://www.epadministrative.com)

## Spotlight on Local Partners



Hanson James, President



MBE  
Cambria Heights, NY (Tier 1)

Airtrain and Light Rail Station  
(LRS) 1 protection in support of  
structural steel erection over  
Airtrain

- **Creative Construction Services Corp.** is a local Black owned business specializing in general carpentry, drywall and framing, acoustical ceilings, safety protection, waterproofing and hardware installation.
- Its President, Hanson James started out as union carpenter over 25 years ago, working at JFK. Mr. James established Creative Construction Services in 2005 and has continued to work in the aviation space. Previous notable projects include JFK IAT /Terminal 4, JetBlue/JFK Terminal 5, LGA Terminal B
- On the NTO project, Creative Construction Services Corp. is the prime contractor assembling the support for platforms and enclosures to protect the Airtrain during steel erection
- Union Affiliations: Local 45 (NYS Carpenters), Local 282 (Teamsters), Local 79 (Laborers)
- **Contract Amount:** \$1.2 million

**THE NEW TERMINAL ONE**  
JFK INTERNATIONAL AIRPORT

JFKR Advisory Council Meeting – 5/8/2023

## Spotlight on MWBE Partners



Stacey Hodge, President



MWBE  
Bronx, NY (Tier 3)

Provides transportation planning  
services and serves as airport  
customer experience monitor for  
NTO

- NTO met Stacey Hodge, President of SBI Strategies Inc, at its **November 2019 Information Session at the JFKR Community Center.**
- **SBI Strategies, Inc.,** is a Black woman owned firm, certified as an M/WBE in New York State, the Port Authority of New York and New Jersey and New York City
- Stacey Hodge has over 20 years experience in transportation engineering, traffic/transportation consulting and strategic planning
- Experience includes JFK Air Cargo Truck Access project and multiple projects for NYSDOT and NYCDOT
- **Contract Amount:** \$100k+
- [www.hodgestrategies.com](http://www.hodgestrategies.com)

**THE NEW TERMINAL ONE**  
JFK INTERNATIONAL AIRPORT

JFKR Advisory Council Meeting – 5/8/2023



# Design-Builder Procurement Opportunities

Bid Packages	Low Voltage Packages	General Conditions / Requirements
Exterior Carpentry	Public Address System	General Construction (Toilet Partitions, etc.)
Stonework & Tile	Cellular DAS & Public Safety	Pest Control
Hollow Metals & Finish Hardware	Life Safety & Airport Operations	Gas Fuel Services
Painting & Coatings	Radio Systems	First Aid Supplies
Graphics & Signage	Security (Installation)	
Landscaping	Information & Communication	
Over Head Coiling & Specialty Doors	Technologies (Installation)	
Roadway Canopies		
Flooring		
Millwork		

To express interest, email us at [info@onejfk.com](mailto:info@onejfk.com) to complete the **Tishman Construction** prequalification and be added to the Bidders List.

**THE NEW TERMINAL ONE**  
JFK INTERNATIONAL AIRPORT

JFKR Advisory Council Meeting – 5/8/2023

## Contractor Prequalification

### STEP 1



**BUILDINGCONNECTED**

First time users, create a Building Connected account.  
  
Returning users, make sure you are logged in before clicking Prequalify.

### STEP 2



Open the "Qualifications" tab (rubber stamp symbol)

Navigate to the **Awaiting Submission** section and locate the questionnaire for: **"Tishman Construction Corporation"**

### STEP 3



If you have any questions, email us at [info@onejfk.com](mailto:info@onejfk.com).

#### RESOURCES

For your reference, find session recordings and copies of past presentations with information regarding how to complete the prequalification application.

- "Understanding the Prequalification Process"
- "New Terminal One Insurance Requirements"
- "Preparing your Health and Safety Plan (HASP)"
- "Completing the Prequalification Application"

**\*\* Note that AECOM is involved in more than one project at JFK Airport. There is a separate prequalification per development team.**

If you are interested in being considered for both projects, **do not** start the applications simultaneously.

Complete 1 first, then start the 2<sup>nd</sup>, to facilitate the seamless transition of information from one application to the next.

**THE NEW TERMINAL ONE**  
JFK INTERNATIONAL AIRPORT

JFKR Advisory Council Meeting – 5/8/2023

## January – Outreach & Community Engagement

- Jan 10 - M/W/LBE & SDVOB Information Session
- Jan 11- NY Women's Chamber of Commerce Contract-HER-NY Procurement Event
- Jan 18 - Workforce Learning Day in collaboration with the Rockaway Development Revitalization Corporation at the Peninsula Preparatory Academy Charter School
- Daily Office Hours



**THE NEW TERMINAL ONE**  
JFK INTERNATIONAL AIRPORT

JFKR Advisory Council Meeting – 5/8/2023



## February – Outreach & Community Engagement

- NY Association of Black and Puerto Rican Legislators (NYSABPRHAL) 2023 Legislative Conference
- **NY Metro Black Pilots of America Scholarship Fundraiser**
- One Hundred Black Men, Inc. 60<sup>th</sup> Anniversary Gala
- Feb 14 - NTO-URW M/W/LBE & SDVOB Information Session
- Feb 28-NTO-AECOM Tishman: Meet the Primes at **RaMed Studios in Jamaica**
- Daily Office Hours



**THE NEW TERMINAL ONE**  
JFK INTERNATIONAL AIRPORT

JFKR Advisory Council Meeting – 5/8/2023

## March – Outreach & Community Engagement

- SOMOS New York
- The Links, Inc. Women's History Month Event
- Scholars' Academy Career Day
- Women Builders Council 2023 AIM National Women's Leadership Forum
- **Majority Whip-Selvina Brooks-Powers in Action Awards**
- Regional Alliance for Small Contractors 28<sup>th</sup> Annual Service Awards Luncheon Ceremony named Kim Hardy and Hersh Parekh the MWBE Advocates of the Year
- Allen Neighborhood Preservation and Development Corp Virtual Job Fair
- Mar 14 - M/W/LBE & SDVOB Information Session
- Daily Office Hours



**THE NEW TERMINAL ONE**  
JFK INTERNATIONAL AIRPORT

JFKR Advisory Council Meeting – 5/8/2023

## April – Outreach & Community Engagement

- Vaughn College 2023 Gala
- Bishop Wright Aviation Industry Awards Luncheon
- Queens & Bronx Business Association April Membership Meeting
- York College Foundation Gala
- JFK Rotary Club Run the Runway 5K
- Apr 11 - M/W/LBE & SDVOB Information Session
- Apr 26 - NTO-AECOM Tishman: Meet the Primes
- Daily Office Hours

**THE NEW TERMINAL ONE**  
JFK INTERNATIONAL AIRPORT

**M/WBE & SDVOB Subcontracting Opportunities**

**Meet the Primes In-person Event**  
Wednesday, April 26, 2023  
10:00AM to 12:00PM

**RaMed Studios**  
92-22 Guy R. Brewer Blvd  
Jamaica, NY 11433

REGISTER HERE or use the QR Code

For more information: [www.aecomtishman.com](http://www.aecomtishman.com)

**AECOM TISHMAN JFK**

**PETER SCALAMANDRE & SONS, INC.**  
FILES AND FOUNDATIONS

Opportunities include, but are not limited to:

- Insulation Installers (Certified Thermacore)
- Piping Steamfitters (Local 138)
- HVAC Piping & Fitting Supply
- Equipment Rental Companies
- Trucking (Flatbed, Drop Deck)
- Rigging



**THE NEW TERMINAL ONE**  
JFK INTERNATIONAL AIRPORT

JFKR Advisory Council Meeting – 5/8/2023



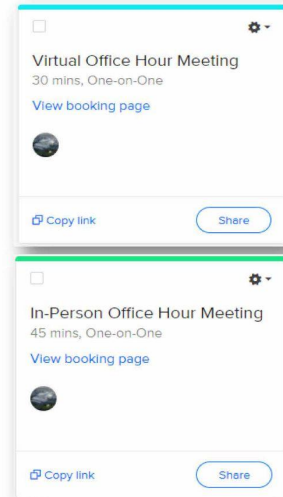
# Stay Connected

## Office Hours

- Visit us at <https://www.anewjfk.com/projects/the-new-terminal-one/>
- Register for 1-on-1 Meetings:
  - **Virtual:** Daily from 9:00am to 5:00pm
  - **In-Person at JFKR Community Information Center:** Wednesdays from 12:00pm to 5:00pm

## 2023 Upcoming Outreach

- MWLBE/SDVOB Information Session, May 9, at 1:00 PM
- NTO-AECOM Tishman: Meet the Primes, May 25, 2023 at 10:00am
- MWLBE/SDVOB Information Session, June 13, at 1:00 PM
- NTO-AECOM Tishman: Meet the Primes, June 29, 2023 at 10:00am
- MWLBE/SDVOB Information Session, July 11, at 1:00 PM



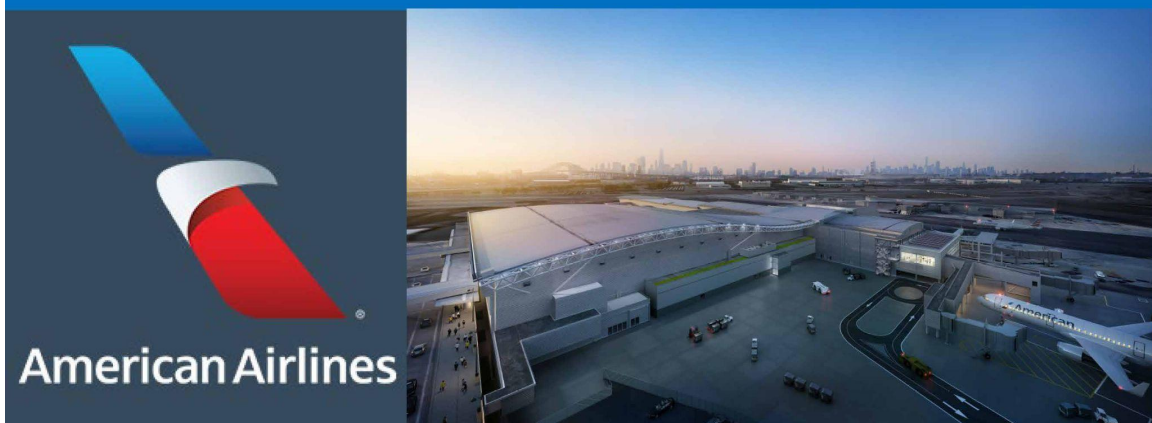
**THE NEW TERMINAL ONE**  
JFK INTERNATIONAL AIRPORT

JFKR Advisory Council Meeting – 5/8/2023



JFK TERMINAL 8

American Airlines   **AECOM** **SIEMENS**



**Terminal 8 JFK Redevelopment Program**  
**Quarterly Meeting - JFK Community Advisory Committee**  
May 8<sup>th</sup>, 2023

# AGENDA

- Final Workforce Participation
- Lessons Learned
- Concessions Program

**Workforce Participation**

JFK TERMINAL 8

American Airlines Holt AECOM SIEMENS

**WORKFORCE PARTICIPATION – MINORITY & FEMALE**

(As of March 31<sup>st</sup>, 2023)

<u>HOURS</u>	<u>HOURS</u>	<u>Previously (DEC 2022)</u>
Total Skilled 537,048	<ul style="list-style-type: none"> <li>▪ Minority Skilled: 193,673 (36.1%)</li> <li>▪ Minority Laborer: 96,018 (54.2%)</li> </ul>	36.5% 55.1%
Total Laborer 177,083	<ul style="list-style-type: none"> <li>▪ Female Skilled: 11,152 (2.1%)</li> <li>▪ Female Laborers: 10,541 (6.0%)</li> </ul>	2.0% 5.7%

### Partnerships to increase female and minority skilled participation

- Nontraditional Employment for Women
- Helmets to Hardhats
- Pathway to Apprenticeship
- Edward J Malloy Construction Skills



## WORKFORCE PARTICIPATION – LOCAL TRADE/LABOR

(FROM JANUARY 2021 TO March 2023)

\*Tracking of participation based on local tier began in January 2021

<u>HOURS*</u>	<u>HOURS*</u>	<u>Previously (DEC 2022)</u>
Total Skilled 502,249	<ul style="list-style-type: none"><li>Tier 1 Skilled: 47,765 (9.5%)</li><li>Tier 2 Skilled: 37,308 (7.4%)</li></ul>	9.2% 7.5%
Total Laborer 169,138	<ul style="list-style-type: none"><li>Tier 1 Laborer: 33,268 (19.7%)</li><li>Tier 2 Laborer: 11,667 (6.9%)</li></ul>	19.6% 6.5%

JFK TERMINAL 8

93

## Lessons Learned

- Develop strategies and roadmap as early as possible for key focuses of the participation.
- Be ready to adapt your outreach strategy to meet pace of the program and the external risk factors and challenges. In our case it was pandemic.
- Explore and use all the resources and methods you possibly can to reach out to the community.

95

## Terminal 8 Concessions Program

### Opportunities are coming!

#### Contract Update

- Agreement and Permit are under final review by the stakeholders.

#### MWLBE and ACDBE Participation

- The redeveloped concessions program will provide additional opportunities for MWLBES and Airport Concessionaire Disadvantage Business Enterprise (ACDBE)
- An outreach program to promote MWLBE and ACDBE participation will kick off soon

Additional details will be shared at the next Advisory Committee meeting

97

# Community Programming



AIR LAND RAIL SEA

## 52<sup>nd</sup> Annual New York State Association of Black, Puerto Rican, Hispanic & Asian Legislators. Inc. Conference Fri. Feb 17<sup>th</sup> – Sun. Feb 19<sup>th</sup>

Workshop about JFK Redevelopment Program

Sponsors:

- Assemblywoman Alicia Hyndman
- Assemblyman Clyde Vanel
- Assemblyman Khaleel Anderson



101

## JFK Redevelopment Fireside Chat March 30, 2023

JFK Redevelopment Fireside Chat Series

Highlighting Local M/WBE firms that have been awarded contracts on JFKR

- **Cauley Coach Inc.**
  - Archie Cauley
- **Ensme Builders Inc.**
  - Rohan S. Warmington
- **RCGA + DM Architects**
  - Robert Gaskin
  - Martine Duphrezin
- **Sullivan-Hernandez Agency, Inc.**
  - Yolanda Sullivan



102



Shawn Cauley, Cauley Coach  
"Our story started right in this very room at the JFK Redevelopment Community Information Center... Details matter."

Yolanda Sullivan, Sullivan-Hernandez Agency  
"Persistence, Persistence."

Rohan S. Warmington, Ensome Builders  
"Never ever give up. Just keep fighting. Keep knocking, the door will open."

Martine Duphrenzin-Surena, RCGA + DM Architects  
"Persistence, never give up. Stay with it. It takes time. It is not going to happen overnight. Patience! You have to be willing to stick with it. Consistent and Pursuit"

Robert Gaskin RCGA + DM Architects  
"Never give up, no matter how hard. And it is going to be but never give up."

PORT  
AUTHORITY  
NY NJ  
AIR LAND RAIL SEA

A NEW  
JFK  
TAKING OFF NOW



"Two days from now would be April 1st and that would be our 38th year in operation. Thankful to be actually gracious to be in this position. Again, we had no idea we would be the first black bus company to go green thanks to the Port Authority. Something like that coming out of nowhere is just crazy. But we are thankful for the opportunity to be able to expand our personnel."



Shawn Cauley

Cauley Coach Inc.

Family - Owned Transportation Business

PORT  
AUTHORITY  
NY NJ  
AIR LAND RAIL SEA

A NEW  
JFK  
TAKING OFF NOW



"Just like all of you guys here we have been trying for like maybe 10 - 11 years, trying to get in and finally we found a way and we got this email from out of nowhere saying there is going to be a bootcamp for JFK Redevelopment Program... we didn't know then. And then someone called us... I said this is just another show and the gentleman convinced me and I participated and here I am. It was worth it. So, I am telling all of you guys don't give up. keep knocking..."



Rohan Warmington

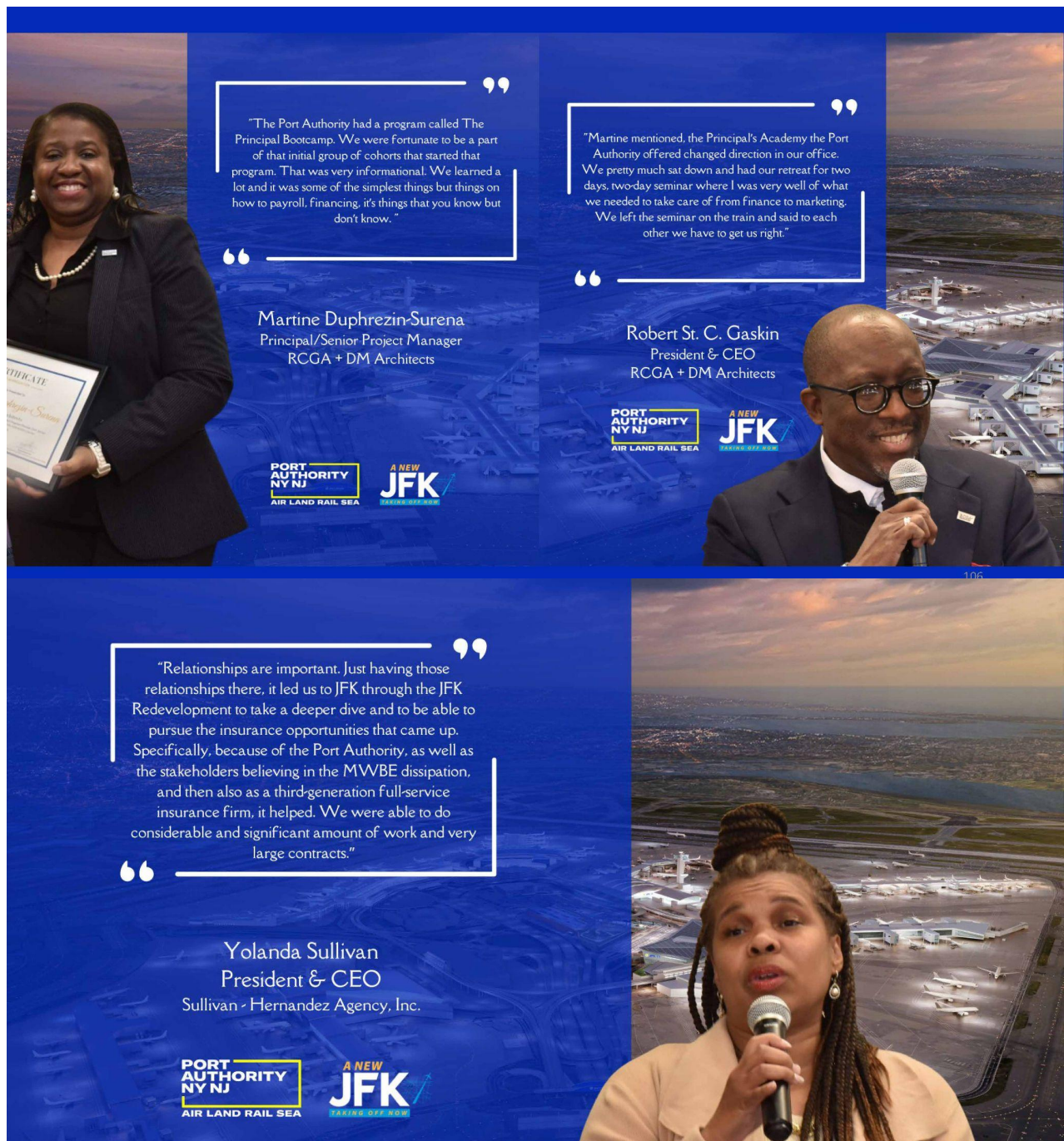
President & Owner,

Ensome Builders

PORT  
AUTHORITY  
NY NJ  
AIR LAND RAIL SEA

A NEW  
JFK  
TAKING OFF NOW





## JFK Redevelopment Watch & Learn March 31, 2023

### JFK Redevelopment Watch & Learn Series:

#### RED TAILS

in collaboration with the New York Metro Black Pilots Association and the Claude B. Goven Chapter of the Tuskegee Airmen Inc.

Thank you to Brian Worthington and the entire New York Metro Black Pilots Association and the Claude B. Goven Chapter of the Tuskegee Airmen Inc. for teaching children about the history of Tuskegee Airmen and their contributions to the military and Aviation.





# JFK Redevelopment Program Watch & Learn

Friday, June 23, 2023 | 6PM

The JFK Redevelopment Program will host the second Watch & Learn event, in collaboration with the New York Metro Black Pilots Association and the Claude B. Goven Chapter of the Tuskegee Airmen Inc.

**Purpose:** to educate grade school children about the history of general aviation aircraft and how they are used for fire and rescue operations.

**Movie:** PLANES: Fire & Rescue (Rated PG)

**Audience:** Elementary School Students

**Location:** JFK Redevelopment Community Information Center  
144-33 Jamaica Ave., Jamaica NY 11435

**Registration Link:** <https://tinyurl.com/JFKR2WATCHLEARN>

111

## Access to Capital Webinar April 19, 2023

In partnership with the NYS Empire State Development Corp. and the Greater Jamaica Development Corporation.

Attendees learned about two programs that may help businesses obtain the capital necessary to drive growth and fulfill contracts with the JFK Redevelopment Program.

- NYS Contractor Financing Program
  - <https://esd.ny.gov/nys-contractor-financing-program>
- GJDC Business Services Group and CDFI Assistance Program.
  - <https://gjdc.org/business/>



Empire State  
Development



Greater Jamaica  
Development  
Corporation

109

## M/WBE Information Session + Networking April 26, 2023

Hosted by the Queens & Bronx Building Association and the Port Authority of NY & NJ + JFK Redevelopment Program at the Greater Nexus Coworking Space.

- Overview of the JFK Redevelopment Program
- Network with JFKR Terminal Developers
- Meet with the PA Certification Analyst to learn how to become certified as an M/WBE with the Port Authority.



110

# CAO Rockaway Career Center

## March 2020-March 2023 Highlights

869

Individuals Placed  
at JFK Airport

5,766

Career  
Assessment

459

Queens Residents  
Placed at JFK Airport

4,538

Candidates  
Referred

## Community Outreach

98

Community  
Information  
Sessions



11

Job Fairs  
Hosted



17

Customer Service &  
Financial Literacy  
Training Cohorts



91

Job Fairs  
Attended



116



## JFK Redevelopment Aviation & Sustainability Mini Camp Mon. Aug. 7 – Friday Aug. 11

Hosted by JFK Redevelopment Community Outreach Team, in partnership with:

- JFK General Manager's Office
- PA Office of Sustainability
- Idlewild Science Learning Center
- Cradle of Aviation
- CUNY Aviation Institute

Free 5-day summer mini-camp about aviation and sustainability.

- Capacity: 30 students (first-come, first-served)
- Topics covered: Climate change, Greenhouse effect, Carbon effect, Carbon cycle, Renewable energy, Conversation & resource management, Aviation sustainability and flight
- Trips: Idlewild Science Learning Center, York College Aviation Flight Simulator, & special airside tour of JFK Airport
- Daily breakfast and lunch provided by local vendors
- T-shirts for trip days

112



## JFK Redevelopment Girls in Aviation Day 2023 Sat., October 14, 2023 | 8AM

Introduce girls in grades 1 – 12 to the aviation industry.

Learn from and be inspired by professional women in aviation, including pilots, mechanics, flight crew, and many more through breakout sessions and hands-on learning experiences.

Open to local girls and young women from Southeast Queens, Far Rockaway, Southwestern Nassau County.

113





# Aviation STEM Program

**Expected Launch – Fall 2023**  
**300 Students**  
**4-Saturdays Program**



**Middle and High School Groups:**  
**Grades 6-8 and Grades 9-12**

Inspire students' creativity in aviation STEM through hands-on robotics projects and the uses of robotics in aviation.

**Elementary School Groups: Grades 1-3 and Grades 4-5**

Develop students' interest in the aviation field through hands-on activities exploring the science and technology of flight.

120



## Rockaway Career Center Dashboard

<u>KPI</u>	<u>2020-2022</u>	<u>Jan.-March 2023</u>	<u>Total</u>
Customers Served	4896	757	5653
Unique Referrals	3839	975	4814
JFK Airport Placements	656	109	765
Queens Residents Placed	370	62	432
Target Zip Placements	312	56	368

Top Employers
SSP America
UNIFI/ERMC
ABM
OTG Management
WorldWide Flight Services

Top Occupations
Food Service
Cabin Agents, ACES
Drivers, Baggage Handlers, Cleaners
Food Service
Warehouse Passenger Service Agents

117



## Annual Aviation Job Fair

**Thursday, June 8, 2023**  
**10 am – 2 pm**

**Queens Borough Hall**  
**Helen M. Marshall**  
**Cultural Center**

**Scan QR Code to Register**



### CAO's 2023 Aviation Job Fair

Opening doors for careers at JFK & LGA AIRPORTS!

**Over 35 employers scheduled to attend**

- JetBlue
- Endeavor Air
- Southwest Airlines
- JFKIAT
- Swissport
- Sodexo and many more!
- OTG Management
- EULEN
- UNIFI
- ALLSTEM
- DFS Group

Scan the code or click the link to reserve your spot  
<https://ow.ly/rVUE0NGmyn>

**EVENT DETAILS**

- Queens Borough Hall  
The Helen M. Marshall Cultural Center  
120-55 Queens Blvd., Kew Gardens, NY, 11424
- Thursday, June 8, 2023
- 10AM-2PM

Business attire recommended | Please practice social distancing | Masks recommended

**POSITIONS AVAILABLE JFK/LGA AIRPORT**

- Inflight Crew Member
- Food Service
- Ground Services
- Management
- Customer Service
- Flight Attendant
- Security
- Technician
- Passenger Service
- Administrative
- Retail
- Driver

118



## JFK Community Information Center

144-33 & 35 Jamaica Avenue | Jamaica, NY 11435

- In-person assistance is available Tuesdays, Wednesdays, and Thursdays, from 9am-5pm.
- Visit [www.anewjfk.com](http://www.anewjfk.com) to schedule an appointment with the MWBE Consultants, Contractors, and Terminal Developers.
- Information sessions, Hiring events, Educational programming, Certification workshops, Networking opportunities

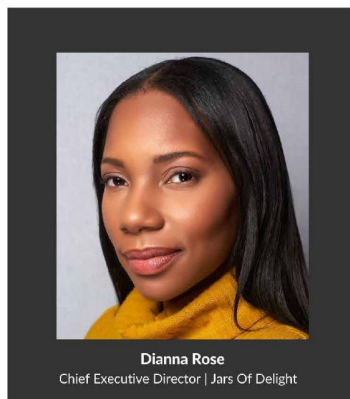


126



## IOC Program Coordinator

**Dianna Rose, Jars of Delight**



**Dianna Rose**  
Chief Executive Director | Jars Of Delight



Jars Of Delight (JOD) was founded by Dianna Rose in 2017 and is New York City's first M/WBE-certified zero-waste food company providing unique mason jar meals to corporate clients. Prior to and after launching JOD, Dianna has held positions in operations, leadership, and management with several companies, most notably JetBlue Airways- as a JFK Operations Control Coordinator, CHAE Corp, and as the Founder of the Essential Kitchen located within the GateWay JFK BID and has dedicated her work to support local businesses within the Southeast Queens Community.

122



## IOC Comprehensive Update

### What can you expect?



- Multi-faceted Learning Environment
- Collaborative Concession Trainings
- Mentorship with SME's (Subject Matter Experts)
- Whole Person Approach

### Legacy



- Curate Local Economic Wealth
- Opportunity to establish Generational Businesses
- Build Sustainable Local Community

123





## L/M/WBE Business Utilization Jan. – April. 2023

FOOD & CATERING	GRAPHICS & PRINTING	LOCATIONS	VIDEOGRAPHY PHOTOGRAPHY
BELLA LULU'S CATERING 11432	BURHANI SIGNS & GRAPHICS 11413	THE GREATER ALLEN CATHEDRAL OF NEW YORK 11433	NAT VALENTINE PHOTOGRAPHY 11423
FARNUM FINEST CATERING 11423	PARTY MOMENTS 11413	GREATER NEXUS 11432	AC EVENTS NYC 11427
SIMPLY THE BEST CATERING 11368			
NANA'S LOVE CATERING 11435			
CHOSEN CULUTRES 11413			

129



## JFKR Community Information Center & Outreach Jan. – Apr. 2023

# OF OUTREACH OFFICE VISITS (JAN – APRIL 2023)	328 OFFICE VISITS
# OF EVENT ATTENDEES (JAN – APRIL 2023)	964 EVENT ATTENDEES
# OF CAO JOB REFERRALS (JAN – APRIL 2023)	47 REFERRALS
# OF EVENT FORM REQUEST (JAN – APRIL 2023)	8 EVENT FORM REQUEST

127



## JFKR Community Information Center Jan. – Apr. 2023 Event Data

# OF OUTREACH INTERNAL EVENTS	8 INTERNAL EVENTS
# OF EXTERNAL EVENTS	31 EXTERNAL EVENTS

128





**CERTIFICATION SESSIONS**

## ACDBE

**AIRPORT CONCESSION DISADVANTAGED BUSINESS ENTERPRISE**

February <b>16</b>	April <b>20</b>	May <b>18</b>
August <b>17</b>	October <b>19</b>	November <b>17</b>

JOIN US IN-PERSON AT THE JFK REDEVELOPMENT COMMUNITY INFORMATION CENTER OR VIRTUALLY TO LEARN HOW TO OBTAIN YOUR AIRPORT CONCESSION DISADVANTAGED BUSINESS ENTERPRISE (ACDBE) CERTIFICATION WITH THE PORT AUTHORITY OF NY & NJ.

JFK REDEVELOPMENT COMMUNITY INFORMATION CENTER  
144-33 JAMAICA AVENUE JAMAICA, NY 11435  
718.244.3834

SCAN QR CODE OR CLICK LINK  
TO REGISTER & FOR MORE INFORMATION  
<https://tinyurl.com/PANYNJACDBE2023>

**12PM**

UPCOMING ACDBE INFO SESSIONS

A NEW **LGA** **PORT AUTHORITY NY NJ** **JFK**

## 2023 ACDBE CERTIFICATION INFORMATION SESSIONS

To Register Scan QR or visit the website listed below

[Tinyurl.com/PANYNJACDBE2023](https://tinyurl.com/PANYNJACDBE2023)

### Dec. 2022 – April 2023

- 25 ACDBE Certification applications received  
10 Applications from NY  
4 from Tier 1 Local Zone
- 101 NY-based certified ACDBEs in the PA Directory  
Only 7 from Tier 1 Local Zone

132



## PANYNJ Certification Jan. – April. 2023

# OF MWBE  
CERTIFICATION ATTENDEES

338 ATTENDEES

# OF ACDBE  
CERTIFICATION ATTENDEES

370 ATTENDEES

# OF MWBE/ACDBE  
CERTIFICATION INFO SESSIONS

4 INFO SESSIONS

# OF CERTIFICATION MEETINGS  
(JAN – APRIL 2023)

38 CERTIFICATION MEETINGS

# OF CERTIFIED FIRMS  
(JAN – APRIL 2023)

13 CERTIFIED FIRMS

130




**CERTIFICATION WEBINAR**

## MWBE

**MINORITY & WOMEN - OWNED BUSINESS ENTERPRISE**

January <b>24</b>	February <b>28</b>	March <b>28</b>	April <b>25</b>
June <b>27</b>	September <b>26</b>	November <b>28</b>	

Getting certified as a Minority & Woman-Owned Business Enterprise can help grow your business! M/WBE Certification gives opportunities to sell to government, networking events, inclusion in the Online Directory's of Certified Businesses and much more!

SCAN QR CODE OR CLICK LINK  
TO REGISTER & FOR MORE INFORMATION  
<https://tinyurl.com/PANYNJMWBE2023>

**6PM**

UPCOMING MWBE 101 SESSIONS

A NEW **LGA** **PORT AUTHORITY NY NJ** **JFK**

## 2023 MWBE CERTIFICATION INFORMATION SESSIONS

To Register Scan QR or visit the website listed below

[Tinyurl.com/PANYNJMWBE2023](https://tinyurl.com/PANYNJMWBE2023)

131





# External Events Photo Recap



135



## 2023 JFKR Summer Internship Program

### Summer Internship:

- Four college students from Tier 1 were selected to work with the Outreach office, Compliance team and Program Management Team
- Two interns were selected to return from the 2022 Summer Internship Program
- Responsibilities will include research & data collection, external communications, compliance data/recommendations, and more.



Brianna Moxam  
Spelman College '24  
Laurelton, NY



Islam Ahmed  
CUNY York College '24  
Jamaica, NY



Najai Grange  
Johnson C. Smith University '24  
Cambria Heights, NY



Edferson Gernier  
CUNY York College '24  
Harlem, NY

133



## JFK REDEVELOPMENT OUTREACH JANUARY 2023 - APRIL 2023 OUTREACH EVENTS ROADMAP





# Event Space Reservation

- If you are looking for a space to host an event, the JFKR Community Information Center is available.
- Please fill out the JFKR Event Space Reservation Form:  
<https://www.anewjfk.com/community-events-public-calendar/>

**THE PORT AUTHORITY**  
OF NY & NJ

**JFK**

**JFK Redevelopment Event Space Reservation Form**

**Applicant Information**

Full Name: \_\_\_\_\_  
Last First Middle Suffix

Organization: \_\_\_\_\_

Address: \_\_\_\_\_  
Street Address Suite or Floor

City: \_\_\_\_\_ State: \_\_\_\_\_ ZIP Code: \_\_\_\_\_

Phone: \_\_\_\_\_ Email: \_\_\_\_\_

**Event Details**

Name of Event: \_\_\_\_\_ Date of Event: \_\_\_\_\_

Event Space: ☐ Community Information Center, Max 10 seating; or ☐ JFK Report - Bldg 14, New 11 seating or standing seating

Start Time of Event: \_\_\_\_\_ Event End Time: \_\_\_\_\_ # of Attendees: \_\_\_\_\_

Equipment/Space Needs: \_\_\_\_\_

Purpose of Event: \_\_\_\_\_

Priority Consideration will be given to events with a result to the JFK Redevelopment Program. Please use the space below to describe how your proposed event is related to the JFK Program.

Signature: \_\_\_\_\_  
(Required One Business Page)

Signature Line: \_\_\_\_\_ Date: \_\_\_\_\_

Discipline: \_\_\_\_\_

1



## JFK Redevelopment Outreach Contact Directory

The JFK Redevelopment Outreach Contact Directory includes the contact information for the following

- JFK Redevelopment Outreach Team
- M/WBE Compliance Consultants
- Terminal Developers
- JFK Cargo Facility AeroTerm Project



SCAN HERE TO ACCESS THE  
JFK REDEVELOPMENT  
CONTACT DIRECTORY

## JFK Redevelopment Outreach Team



Address	144 - 33 Jamaica Avenue Jamaica, NY 11435
Phone Number	718.244.3834
Email Address	jfkdevelopment@panynj.gov
Website	<a href="http://www.anewjfk.com">www.anewjfk.com</a>
Hours of Operation	Tuesdays, Wednesdays & Thursdays 9AM - 5PM Virtually Mondays & Fridays 9AM - 5PM
Manager of External Affairs & Community Outreach	Rachelle Antoine, raantoine@panynj.gov 718.244.3828
Office Manager	Bridgitte Allen, brallen@panynj.gov 718.244.3834
Operational Outreach Leader	Natasha Turner, nturner@panynj.gov 718.244.3831
Certification Analyst	Gloria Wigfall, gwigfall@panynj.gov 201.395.3949 Office Hours: Every Thursday 9AM - 4PM



# **Q&A Thank You!**



**AIR LAND RAIL SEA**

## **Statement from Advisory Council Member Phillipa Kateron**

*"We've come a long way. Especially from the first session with limited information to no information. The progress is amazing! Congratulations and keep up the great work."*

### **Question:**

Peter Johnson (a local designer) inquired about art opportunities.

### **Answer:**

Terminal 4 offered to meet with him and share opportunities.

### **Question:**

Councilwoman Nantasha Williams as *"What are the updates on the Community Development Initiatives"?*

### **Answer:**

The following Round One Initiatives are underway:

CAO Rockaway Career Center

Institute of Concessions - (Fall 2023 launch)

YORK College STEM Program - (Fall 2023 launch)

### **Question:**

Councilwoman Nantasha Williams also asked *"When will the portal be opening again and when are the next sub committee meetings"?*

### **Answer:**

The second round of initiatives will be coming after the first round is completed. Sub-committees are regrouping to start meeting over the summer.