

# JFK International Airport The New Terminal One

**M/W/LBE Information Session**

*March 9, 2021*



# Redevelopment of JFK Terminal One



**9** Widebody Gates / **1** Narrowbody Gate

**0.7** million square foot building

**45** acres (current T1 site)

**All-International** traffic



**THE NEW TERMINAL ONE**  
JFK INTERNATIONAL AIRPORT

**THE NEW TERMINAL ONE**  
JFK INTERNATIONAL AIRPORT

**22** Widebody Gates / **1** Narrowbody Gate

**2.7** million square foot building

**144** acres (current T1, T2 and former T3 sites)

**All-International** traffic



PRIVATE & CONFIDENTIAL



# Commitment to Diversity

## Diversity efforts start with The New Terminal One's Leadership:

- **Dr. Gerrard P. Bushell**, Executive Chair of The New Terminal One and Chair of Carlyle Airport Group Holdings, is a leader with experience in government, labor and the private sector. Dr. Bushell served as the President and CEO of the Dormitory Authority of the State of NY (DASNY) where he deployed more than \$38 billion of capital and financing and managed a construction portfolio valued at over \$6 billion in construction projects all while advancing the State's M/WBE goals beyond 30% for DASNY.
- **JLC Infrastructure** is a 30% equity partner. JLC Infrastructure is a leading investment firm with a strong track record and presence in NY and is a registered MBE with the PANYNJ. JLC's participation since the inception of the project has helped to drive the commitment to fostering diversity.
- **McKissack & McKissack**, the oldest woman and minority-owned design and construction firm in the US, is leading the Project Management Office. Cheryl McKissack Daniel, its President and CEO, is actively engaged with The New Terminal One as an advisor. McKissack has a formidable track record of delivering projects that meet and often exceed MWBE goals. Its portfolio of projects includes: World Trade Center, Columbia University, Metropolitan Transportation Authority (as Independent Engineering Consultant for 8 years), Philadelphia International Airport and LaGuardia Airport.



# The New Terminal One Commitment

## Reaffirming Our Commitments

- **30% M/WBE goal (20% MBE, 10% WBE)** across all phases and disciplines of the project
- Driving New York State's nation leading **M/WBE participation for the project beyond \$1 billion**
- **Hiring goals for minorities (40% for laborers, 30% for other trades and 7% for women)**
- **Prioritization of local firms** starting with SE Queens and Western Nassau, followed by Borough of Queens and NY/NJ Port District

Dear Partners:

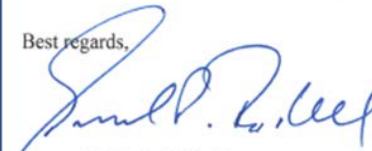
We are delivering one of the most important infrastructure projects across the globe at The New Terminal One at JFK International Airport. We are proud to partner with the Port Authority of New York and New Jersey and execute on Governor Cuomo's vision of a world-class airport. To that end, we are committed to driving innovation, excellence, and diversity and inclusion.

One of the most important themes central to our designation as the developer and operator of The New Terminal One is our commitment to "Diversity and Inclusion." We are building a business where our DNA reflects the importance of building partnerships embracing and reflecting the diversity of the JFK-area community, New York City, and the State of New York.

We require our partners to create opportunities for Minority- and Women-Owned-Business Enterprises (MWBE) and Local Business Enterprises (LBE). We expect our engagements to present plans and benchmarks to meet and exceed the 30% MWBE goals. Our procurements are designed to deliver best-in-class services and commodities. We are also looking for our partners to be strategic and innovative in how they work with MWBE and LBE firms to build capacity, grow, and employ a diverse workforce. This expectation extends to all segments of our project: finance, design and construction, operations, and commercial activity. These commitments permeate everything we do as we drive innovation and performance at The New Terminal One at JFK and deliver a world-class terminal.

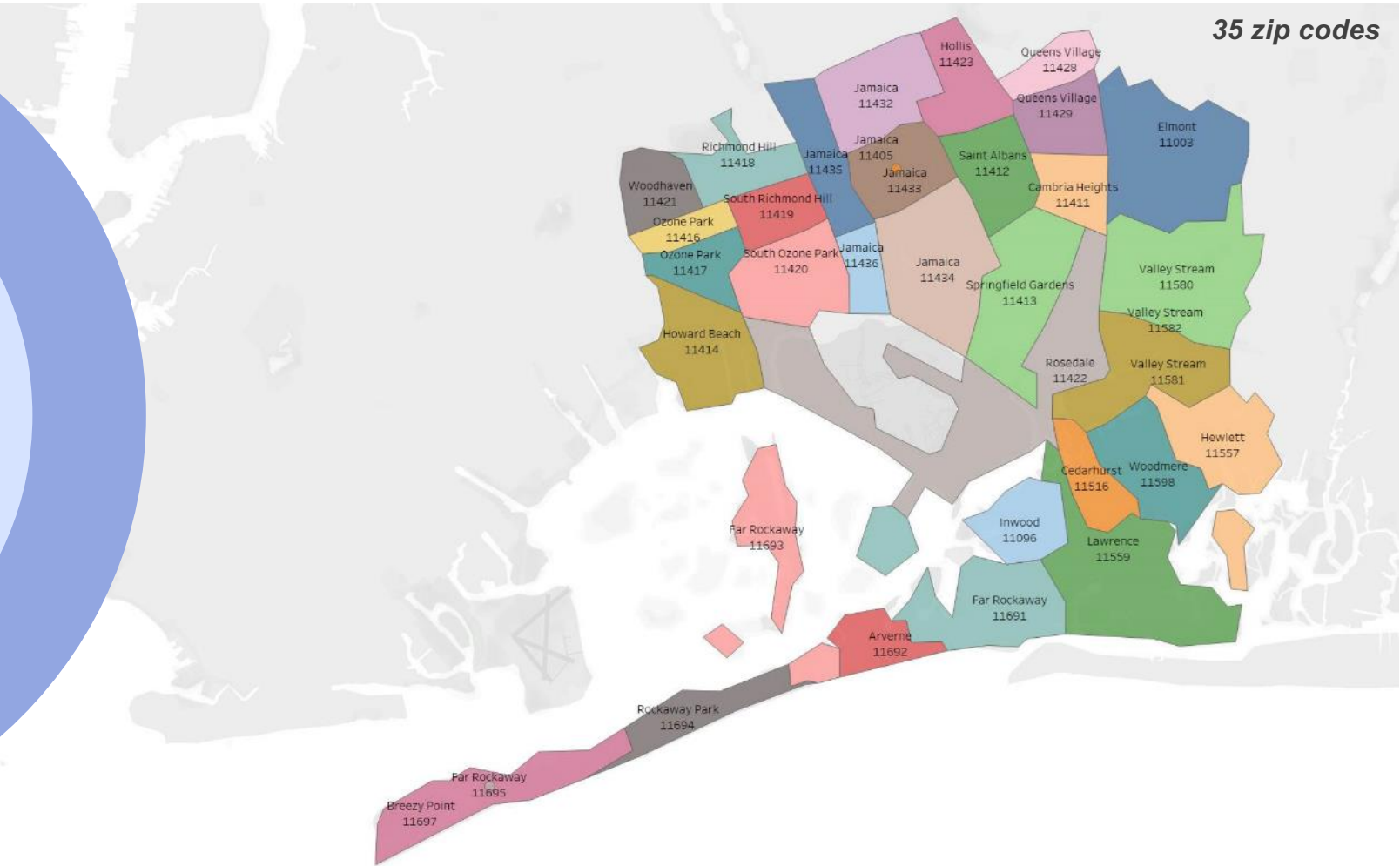
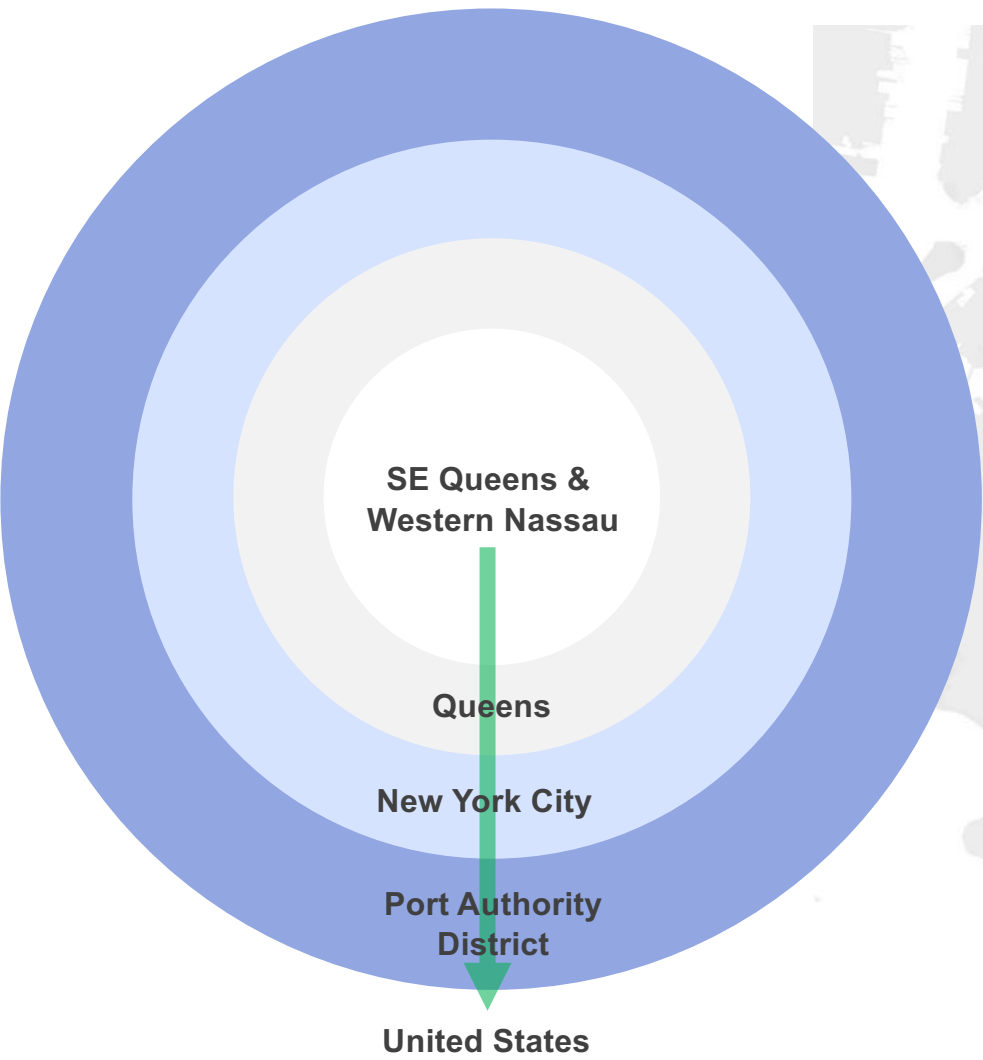
We demand your best thinking and expect you to deliver exceptional results. Our team, including Kim Hardy, Director, MWBE Participation, at [khardy@onejfk.com](mailto:khardy@onejfk.com) or (917) 405-0526, will engage with you throughout the project. We look forward to working closely with you to achieve these goals.

Best regards,



Gerrard P. Bushell, Ph.D.

# Local Prioritization for New Opportunities



# Creating Opportunities for the Community & Region

## Jobs



**5,000+** local construction jobs  
**10,000+** permanent jobs with continuity from the current Terminal One

## Local



**Creating** opportunities for local firms and residents  
**Prioritizing** 35 local zip codes, Queens and NY/NJ

## MWBE



**30% MWBE** participation goal across all disciplines and phases including at the Financial Sponsor level and professional services

## Labor



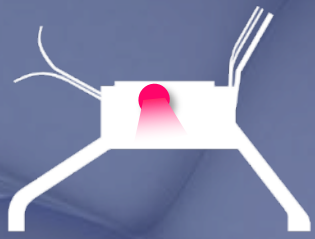
**Project Labor Agreement** with leading MWBE/local provisions  
**Building Trades** investing through Ullico as a Financial Sponsor

## Community Involvement



**Initiatives** on education, workforce, environmental and business development  
**JFK Airport Academy** to upskill local workforce

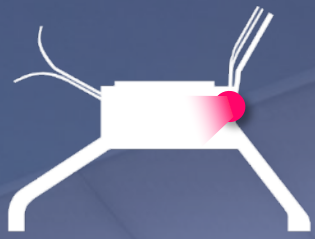




# Departures Hall





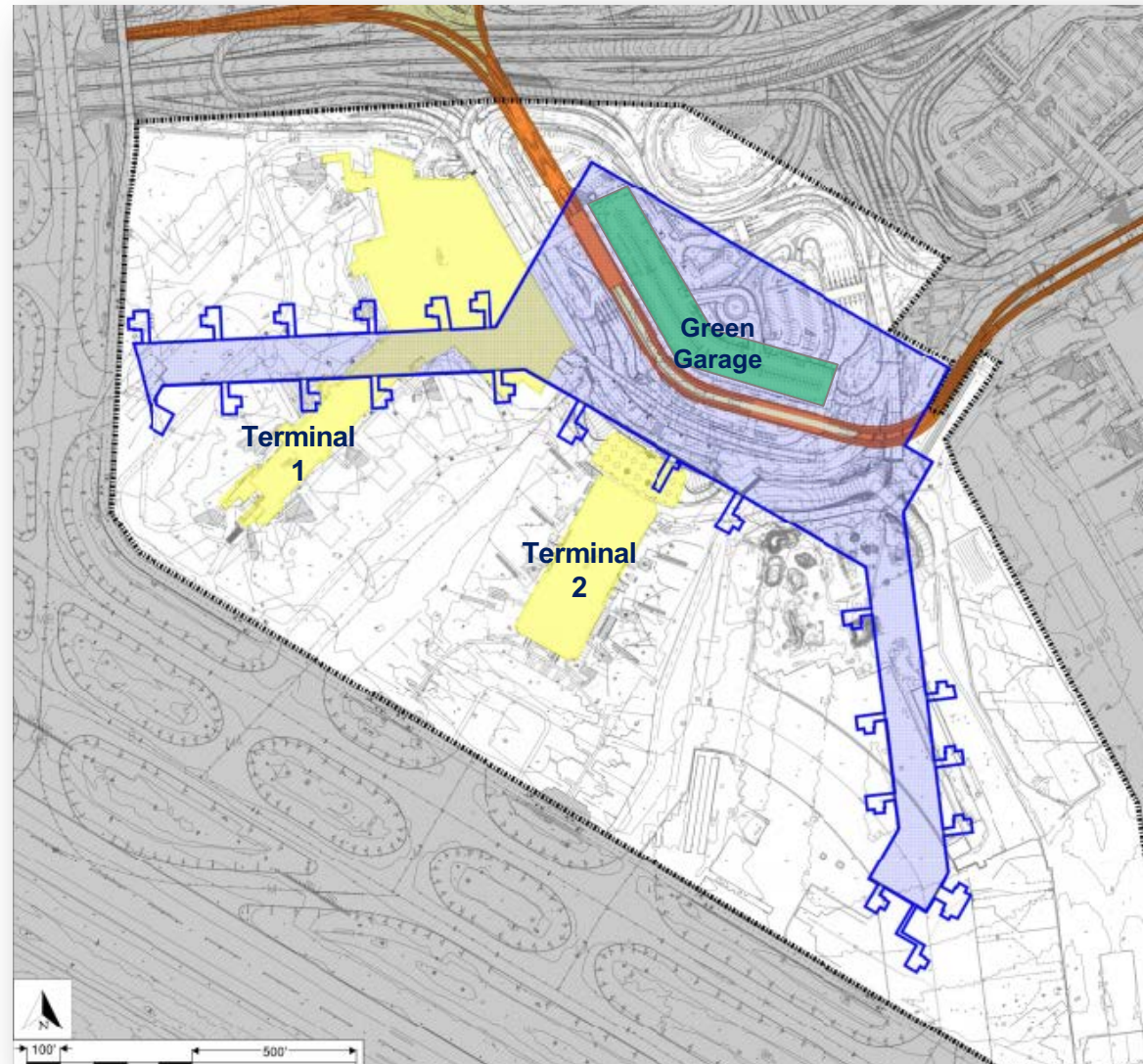


# Commercial Zone





# Project - Overview



# Project - Overview

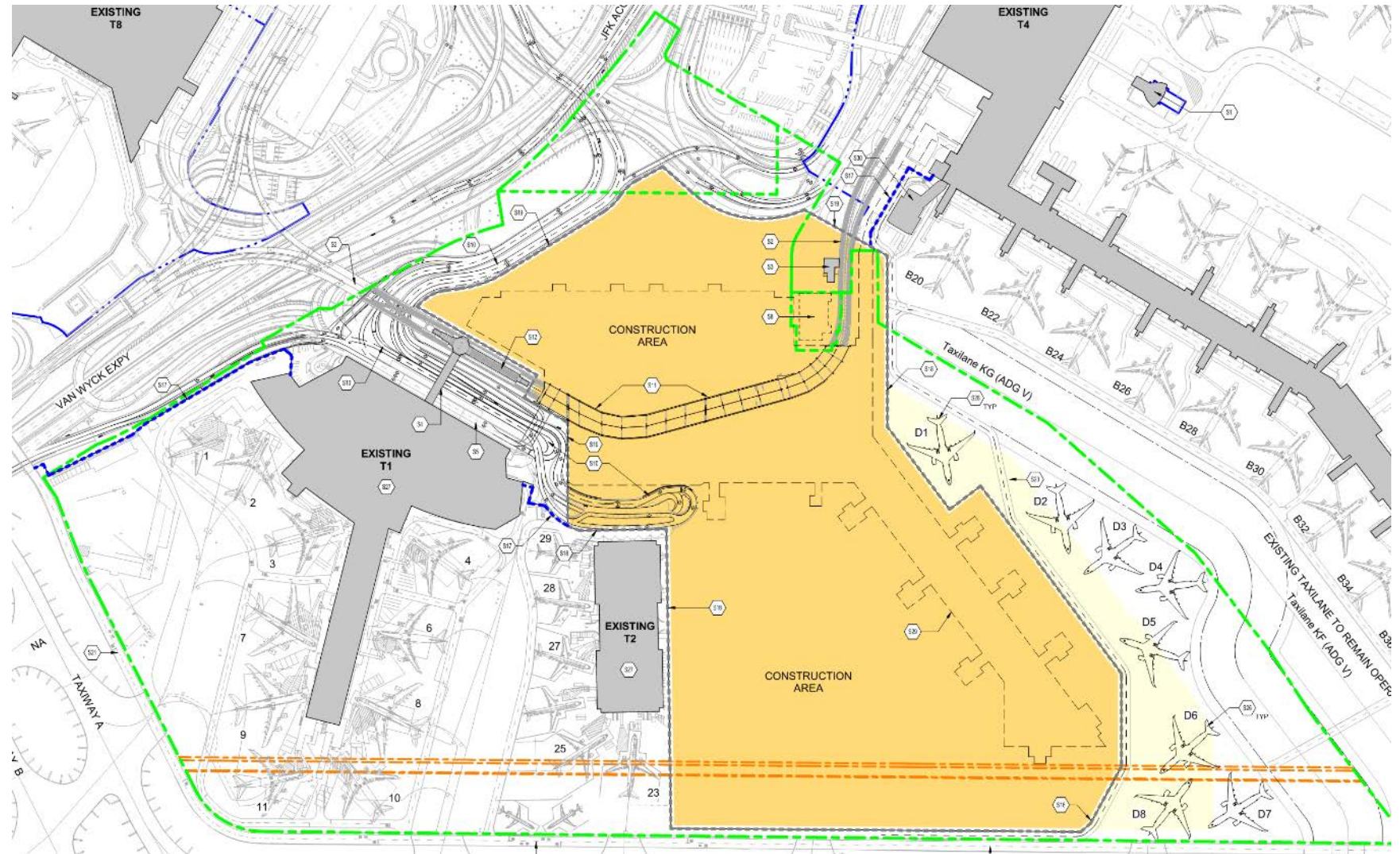
Phase A0 (3 Months): Site Capture, Demo

## Phase A (44 Months)

- A0 (3 Months)
- A1/A2 (41 Months)

## Phase B (40 Months)

- B0 (4 Months) \*concurrent
- B1 (22 Months)
- B2 (18 Months)

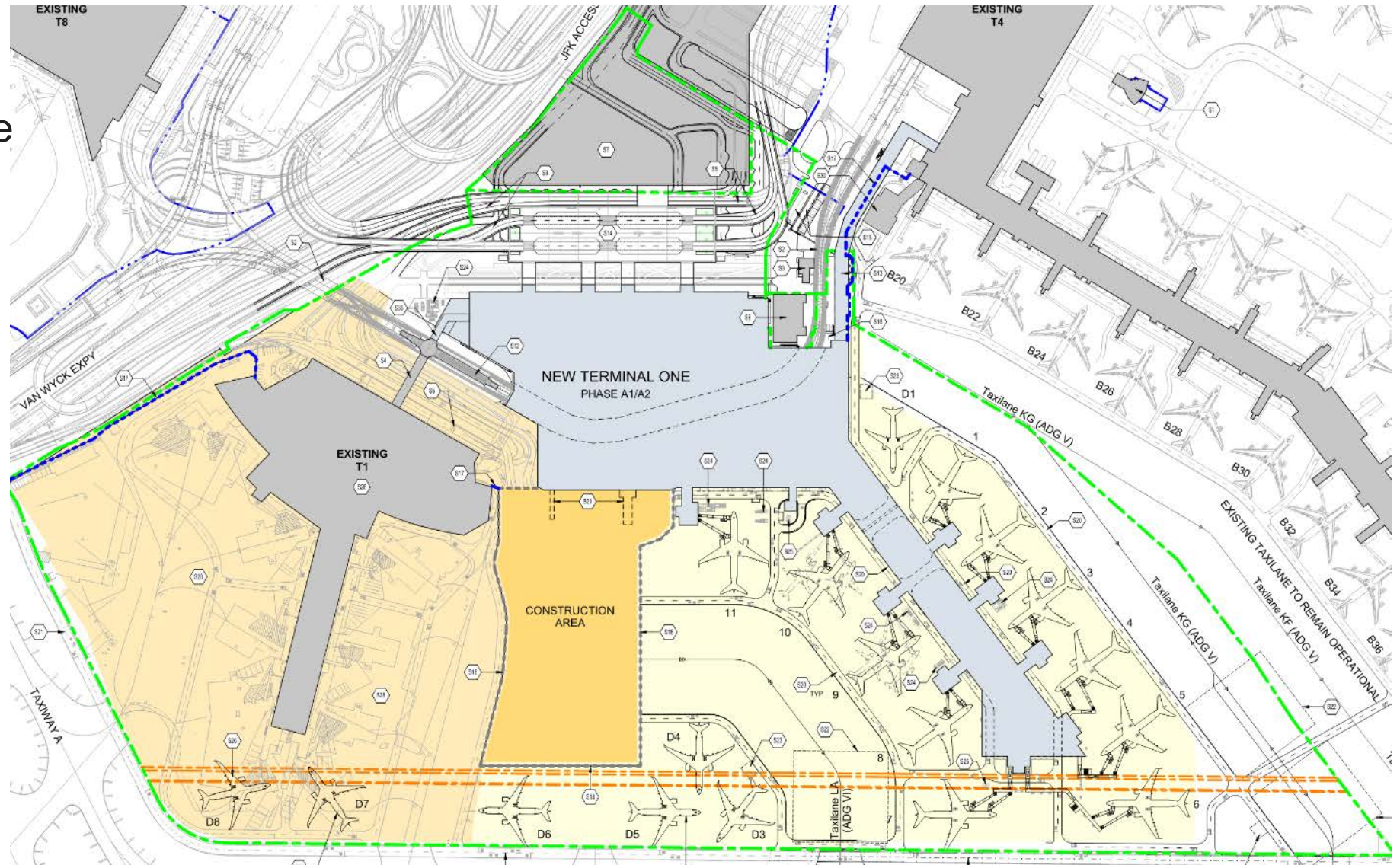




# Project - Overview

Phase A1/2/3 (41 Months)

- Construct Head House and East Pier (11 gates)
- Phase A3 – Demo T2, construct 2 gates

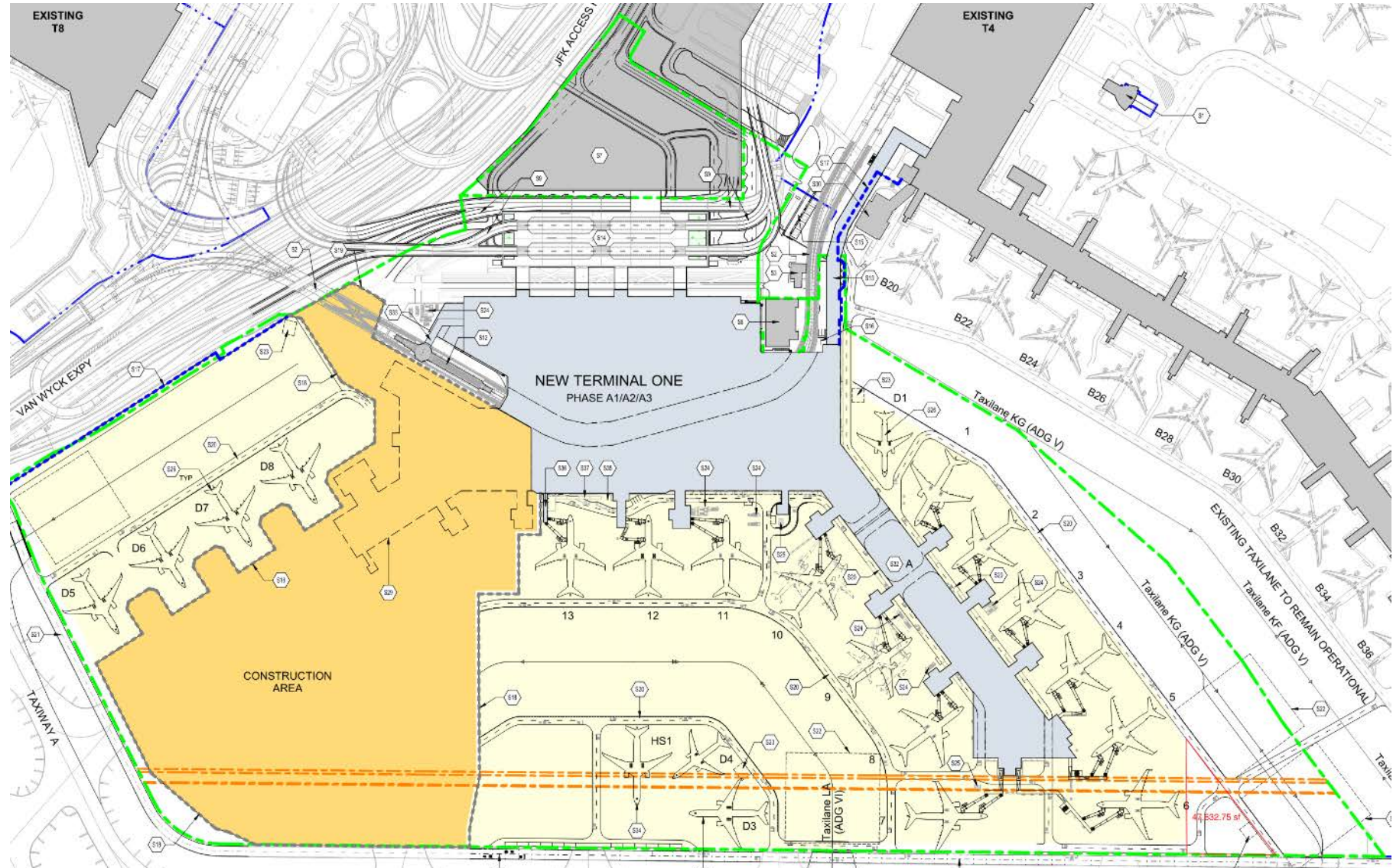




# Project - Overview

Phase B0 (4 Months)

- Site Capture
- Demo Old T1

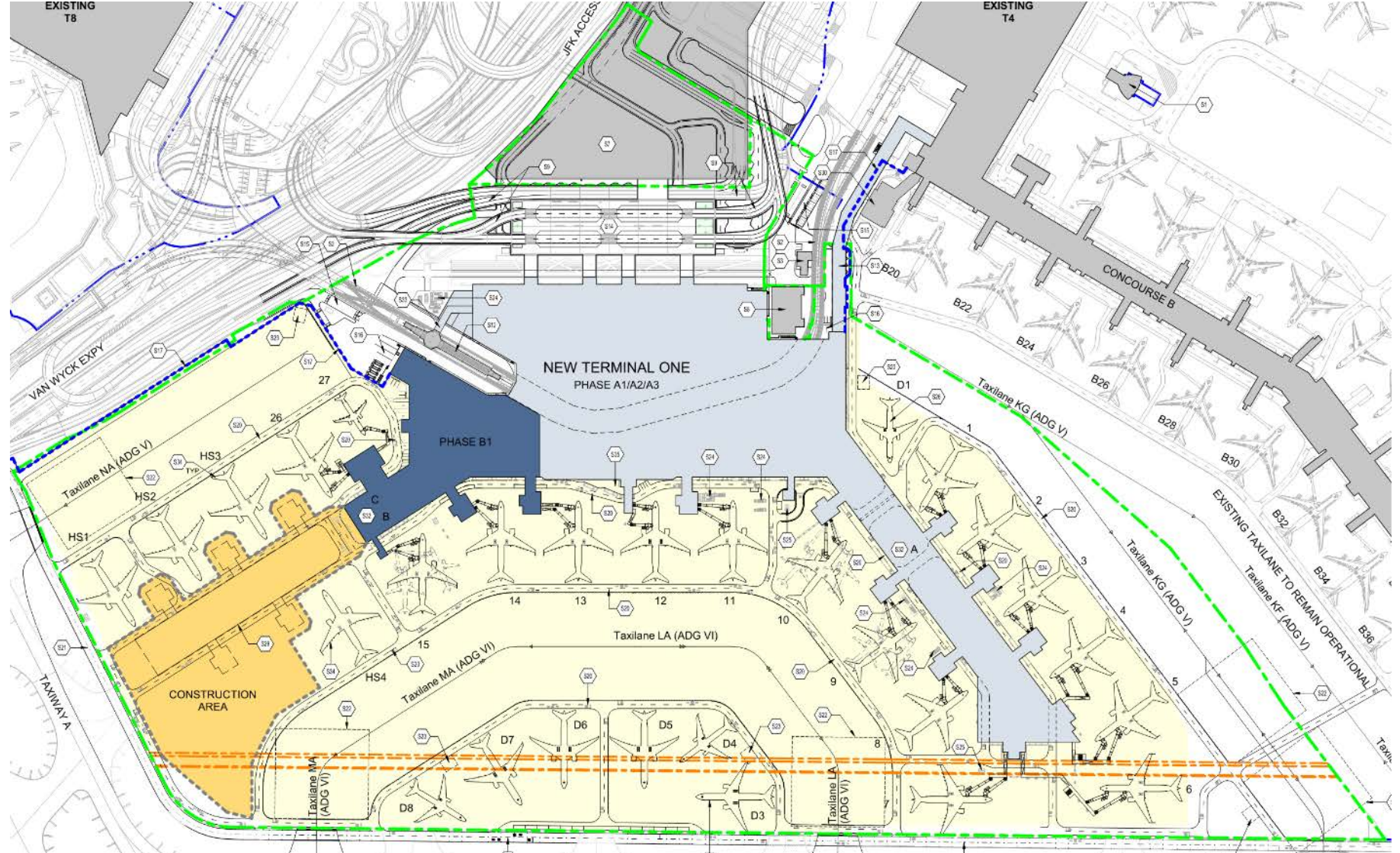




# Project - Overview

Phase B1 (22 Months)

- Concurrent with Phase B0, construct remaining head house
- Half of West Pier (5 gates)

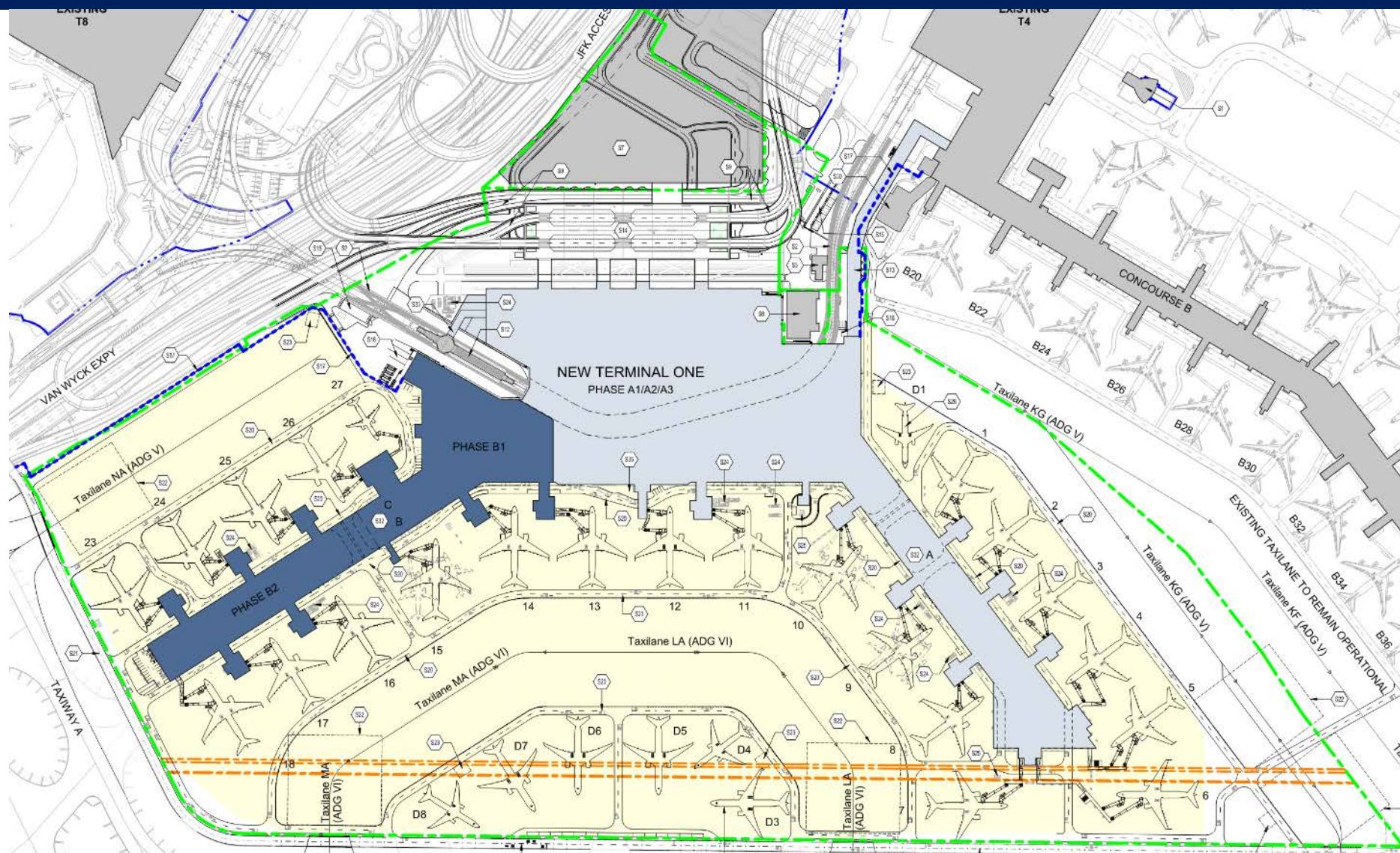




# Project - Overview

Phase B2 (18 Months)

- Construct remaining West Pier (5 gates)





# Stay Connected with The New Terminal One

Visit us at:

[www.anewjfk.com](http://www.anewjfk.com)



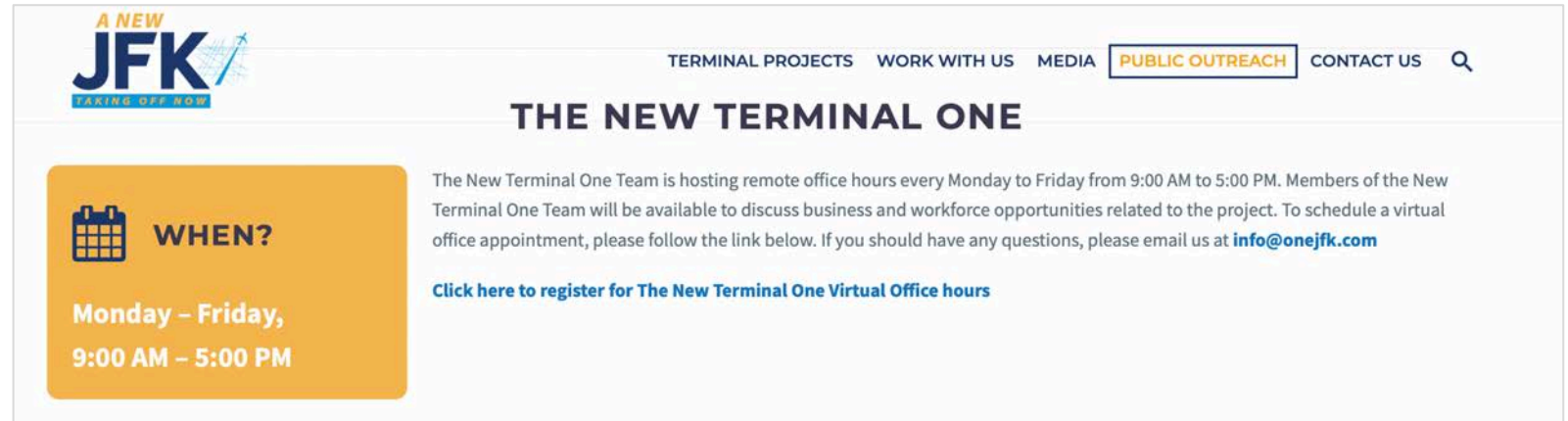
TERMINAL PROJECTS WORK WITH US MEDIA PUBLIC OUTREACH CONTACT US



# Stay Connected with The New Terminal One

Visit us at  
[www.anewjfk.com](http://www.anewjfk.com)

*Follow Virtual Partner  
Outreach Days*



The screenshot shows the website for 'A NEW JFK TAXING OFF NOW'. The navigation bar includes links for 'TERMINAL PROJECTS', 'WORK WITH US', 'MEDIA', 'PUBLIC OUTREACH' (which is highlighted), and 'CONTACT US'. The main heading is 'THE NEW TERMINAL ONE'. Below this, there is a section for virtual office hours. On the left, an orange box contains a calendar icon, the text 'WHEN?', and the schedule 'Monday – Friday, 9:00 AM – 5:00 PM'. To the right of this box, the text states: 'The New Terminal One Team is hosting remote office hours every Monday to Friday from 9:00 AM to 5:00 PM. Members of the New Terminal One Team will be available to discuss business and workforce opportunities related to the project. To schedule a virtual office appointment, please follow the link below. If you should have any questions, please email us at [info@onejfk.com](mailto:info@onejfk.com)'. Below this text is a blue link that says 'Click here to register for The New Terminal One Virtual Office hours'.



# Stay Connected with The New Terminal One

Visit us at  
[www.anewjfk.com](http://www.anewjfk.com)

Follow Virtual Partner  
Outreach Days

Schedule a Virtual Meeting via  
our online portal.



**THE NEW TERMINAL ONE**  
JFK INTERNATIONAL AIRPORT

The New Terminal One at JFK International  
Airport

## New Terminal One Virtual Office Hours

 45 min

 Web conferencing details provided upon  
confirmation.

The New Terminal One Team is hosting Virtual  
Office hours, Monday through Friday from  
9:00am to 5:00pm.

Members of the New Terminal One Team will  
be available to discuss opportunities for your  
business to participate in the iconic  
redevelopment project at JFK International  
Airport.

## Select a Date & Time

March 2021



SUN	MON	TUE	WED	THU	FRI	SAT
	1	2	3	4	5	6
7	8	9	10	11	12	13
14	15	16	17	18	19	20
21	22	23	24	25	26	27
28	29	30	31			


 Eastern Time - US & Canada (11:09am) ▼


# Stay Connected with The New Terminal One

Visit us at  
[www.anewjfk.com](http://www.anewjfk.com)

Follow The Public Calendar for  
Upcoming Events

Next:  
**M/W/LBE Information  
Session**  
April 9<sup>th</sup> at 2:00pm



TERMINAL PROJECTS   WORK WITH US   MEDIA   **PUBLIC OUTREACH**   CONTACT US   

JFK REDEVELOPMENT COMMUNITY EVENTS  
PUBLIC CALENDAR

UPCOMING EVENTS

**THE NEW TERMINAL ONE – M/W/LBE INFORMATION SESSION: UNDERSTANDING INSURANCE**

Tuesday, February 9, 2021  
2:00 PM – 3:00 PM

Webinar – [Register here](#)

[Event Flyer](#)

PAST EVENTS

Search:

Date	Event	Location	Time
26-Jan-2021	The New Terminal One – M/W/LBE Information Session: Structural Steel Program	Webinar	4:00 PM – 5:00 PM
12-Jan-	The New Terminal One – M/W/LBE Information Session: Marketing Your	Webinar	2:00 PM –



# Stay Connected with The New Terminal One

Visit us at  
[www.anewjfk.com](http://www.anewjfk.com)

*Schedule a Virtual Meeting via  
our online portal.*

*Follow the Public Calendar for  
Upcoming events*

Next: M/W/LBE Information Session  
April 9<sup>th</sup> at 2:00pm

*For more information  
email us at*  
[info@onejfk.com](mailto:info@onejfk.com)



# Q&A

**The New Terminal One at JFK**  
Contact us at: [info@onejfk.com](mailto:info@onejfk.com)

