

An aerial architectural rendering of the New JFK Terminal 6 at dusk. The terminal is a large, modern building with a blue and white facade, featuring a prominent circular skylight on its roof. It is surrounded by numerous aircraft parked at gates and on the tarmac. The terminal is connected to a parking garage and a transit hub by a series of elevated walkways and ramps. The surrounding area includes runways, taxiways, and other airport infrastructure. The sky is a deep blue, and the ground is illuminated by the warm lights of the terminal and the cool lights of the twilight.

New JFK Terminal 6

October 7, 2021

JFK Millennium
Partners

JFK Millennium Partners

DEVELOPERS:



MWBE STRATEGY & OUTREACH:



DESIGN-BUILD FIRM:



TERMINAL MANAGER:



** MWBE companies*

JMP's Commitment

- ❖ **JMP is committed** to identifying, driving, and expanding opportunities for Local and MWBE businesses through all phases of the JFK Terminal 6 Redevelopment Project
- ❖ Working **together with the Port Authority** of New York & New Jersey **and our design build partner, AECOM Hunt**, we will use the best practices to work closely with the communities
- ❖ We are excited to work with the Advisory Council and community organizations **to partner on continuous outreach and engagement efforts**
- ❖ We expect **over \$800 million of contracting opportunities** from the early stages of the project, through construction, and into long term ACDBE concessions.
- ❖ **JMP WANTS YOU! - We're Building Our Future Together**



William C. Thompson
JMP Spokesperson MWLBE engagement

AECOM Hunt's Commitment

- ❖ **AECOM Hunt is proud to be a part** of JFK Millennium Partners' world-class airport experience at JFK Terminal 6
- ❖ **Infrastructure creates opportunity for everyone.** The Terminal 6 Project provides a significant opportunity to partner with the Port Authority of New York & New Jersey in ensuring that **the communities** most impacted by the construction of the New JFK **benefit from the program**
- ❖ Our Local and MWBE plan recognizes that **proactive and strategic outreach to the Local and MWBE business community is essential** to expanding awareness, ensuring access to opportunities, and realizing meaningful participation
- ❖ We are actively working closely with the PANYNJ's Office of Diversity and Inclusion to ensure **transparency, accountability, and success in achieving the MWLBE goals for the T6 project**



Jay Badame
President AECOM Construction

An aerial photograph of an airport terminal and surrounding infrastructure, including runways, taxiways, and parking lots. The image is overlaid with a semi-transparent blue filter. The terminal building is a large, modern structure with a curved roof and multiple wings. Several aircraft are visible on the tarmac. The surrounding area includes parking lots, roads, and some greenery.

Project Overview

A New JFK Terminal 6 in the Gateway to the World

Key Highlights:

- 9 aircraft gate terminal and apron
- Ground Transportation Center
- Supporting roadways and utilities
- Capital expenditure of \$2.6 billion from 2021-2027 (from total project cost of \$3.9 billion to build the new terminal, including financing and other costs)

Phase II : Q2 2025 - Q1 2027

Phase I : Q2 2022 - Q1 2025

JMP will build JFK Terminal 6 as a state-of-the-art terminal for international and domestic flights that will anchor the north side of JFK Airport and connect to Terminal 5

Timeline from Construction to Operations

2021

- Complete Port Authority approvals
- Project design and mobilization
- Indicative ratings from credit agencies, commence debt execution / equity syndication

2022

- Reach financial close
- Groundbreaking to commence work on JFK T6 portion of site

2023 - 2024

- Ongoing work on JFK T6 portion of site
- Manage interim operations of T7
- Ongoing Terminal leasing and concession programming

2025

- Open Headhouse and Phase I gates for operations
- Demolish T7 and commence work on T7 portion of site

2026 - 2027

- Ramp up occupancy and operations of Phase I gates
- Open remaining Phase II gates in 2027

JMP is looking forward to a successful long-term partnership with Local and MWBE Communities

In addition to agreed 30% equity participation, more than \$800 million in MWLBE contracts targeted

2021 – 2027 Pipeline (as of September 2021)

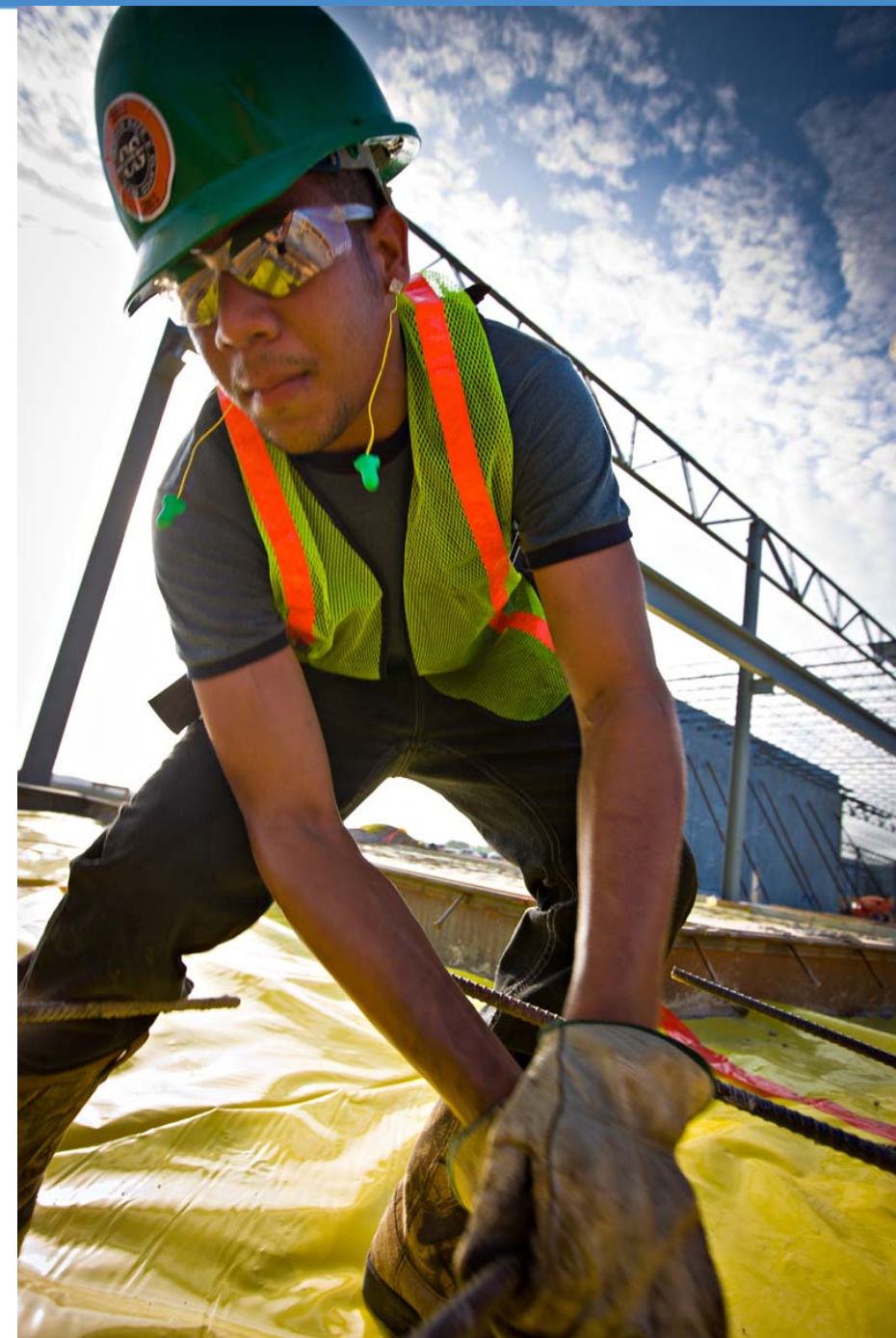
Category of Work	MWLBE Contract Award Goals	Bid Start Date	Bid Award Date	Timeline of Work
I: Financial and Professional Services	\$20mm	Q4 2021	Q4 2021 through Q1 2022	Q4 2021 through Q2 2022
II: Design and Engineering	\$60mm	Q3 2021	Q3 2021 through Q1 2022	2021 – 2026
III: Construction and Building	\$725mm	Q4 2021	Q4 2021 through 2026	2021 – 2027
IV: Terminal Operations and Maintenance	Procurement will be kicked off in 2024 (3-6 months before Phase I opening) with a strong commitment to concessions and employment participation			2025 - 2060

MWBE and Local Early Activity

Since Port Authority project approval on August 5, 2021

- **Strong collaboration with Port Authority** to ensure comprehensive outreach and communication plan
- **Total contract procurement reached \$80 million** as of September for design and engineering work
- **Almost 30% (\$23 million) in awards and commitments** made to almost **40 qualified MWLBE firms** in: civil roadway structures, landside roadway utilities, architecture, structural engineering and mud-rotary standard penetration test
- The MWBE commitments are shared by MBE at \$15mm and WBE at \$8mm, including early wins of \$800,000 for Tier 1 and \$4mm for Tier 3 NYC locations

More than \$500 million of near-term opportunity, with packages being released for bids by MWLBES in the coming weeks and months



A photograph of a construction site with several workers in orange safety vests and hard hats. They are working on a structure with many vertical rebar rods and wooden formwork. The background shows a line of trees under a clear blue sky. The text 'Upcoming Opportunities' is overlaid in white in the center.

Upcoming Opportunities

Category I: Financial and Professional Services

Estimated timeline from Q4 2021 through Financial closing anticipated in spring 2022

Technical services	Financing	Debt Capital Markets	Bond Issuer Legal	Lender Legal
Specialty consulting and inspections	JMP consortium financial advisor (FA) and related services	T6 project bond underwriting and related services	Bond conduit issuer legal counsel and related services	Lender legal counsel and related services
Estimated timeline for local and MWBE work: Q4 2021	Estimated timeline for local and MWBE work: Q1 2022	Estimated timeline for local and MWBE work: Q1 2022	Estimated timeline for local and MWBE work: Q1 2022	Estimated timeline for local and MWBE work: Q1 2022

Category II: Design and Engineering

From Q3 2021 through 2024, design lead firms Corgan, AECOM Civil and Langan

Currently out for bid	Expected October - December 2021	Expected 2022-2023
Wind tunnel study	Geotech and site investigation services (continued)	Fit out and interior design
Master Systems Integrator services	Staff augmentation and construction administration	
Document controls services	Civil ITS/Lighting/Traffic Signals	
	Fueling Distribution off existing Mains	
	Surveying (for Boring layout)	
	Geophysical services (utility locating)	
	Test Pit Excavations	
	SPT Drilling	
	Maintenance and Protection of Traffic	

Category III: Construction Services Upcoming Bid Packages

- More than \$500 million in bid packages to be released this year, with more opportunities to come in 2022 and 2023
- Smaller and locally focused procurements starting in November will include office supplies, security guards, coffee/water/first aid supplies, vibration monitoring, street sweeping, trash hauling, and scaffolding

November 2021			December 2021	
Roofing, cladding, curtain walls, exterior stud framing	Roadway construction	Structural steel	Spray fireproof and insulation	T7 Demolition
Plumbing, HVAC	Apron sitework / mech utilities / pavement	Metal fabrication, stairs, railings	Skylights	
Electrical	Site electrical / mechanical utilities	Masonry	Caulking and waterproofing	
Baggage handling system	Passenger boarding bridges	Terminal landscape / hardscape		
Anticipated bid due dates: <u>Late Dec. 2021</u>	Anticipated bid due dates: <u>Early Jan. 2022</u>	Anticipated bid due dates: <u>Late Dec. 2021 – Jan 2022</u>	Anticipated bid due: <u>Late Dec. 2021</u>	Anticipated bid due: <u>Mid Jan. 2022</u>

Category III: Construction Services Upcoming Bid Packages

- About 40 bid packages expected in next 60 days ranging from fencing, security to demolition, foundations, apron electrical, pavement marking to structural steel
- Concerted approach to **unbundle scope into smaller packages**
- Please visit anewjfk.com for details

Upcoming Bid Packages - 90 Days							
GMP	Area	BP #	Bid Package Description		Issue Bid Package	Bid Due Date	
GMP	Terminal	03A	Concrete Foundations		11/18/2021	12/28/2021	
PRE-GMP	Apron	31E	Early East Side Apron Work		11/22/2021	12/22/2021	
PRE-GMP	Enabling	31D	T5 Gates 29/30 and Misc Enabling Work		11/22/2021	12/22/2021	
PRE-GMP	Enabling	33A	Utility Relocations / Enabling Work		11/22/2021	12/20/2021	
GMP	Upcoming Bid Packages - 90 Days (cont.)						
GMP							
GMP	Area	BP #	Bid Package Description		Issue Bid Package	Bid Due Date	
GMP	GMP	Terminal	23U	Underground HVAC	11/22/2021	12/30/2021	
GMP	GMP	Terminal	26B	Electrical - Primary	11/22/2021	12/30/2021	
GMP	GMP	Terminal	26D	Electrical - Emergency Power	11/22/2021	12/30/2021	
GMP	GMP	Terminal	26U	Underground Electrical	11/22/2021	12/30/2021	
GMP	GMP	Upcoming Bid Packages - 90 Days (cont.)					
GMP	GMP						
GMP	Area	BP #	Bid Package Description		Issue Bid Package	Bid Due Date	
GMP	PRE-GMP						
GMP	PRE-GMP	GMP	Roadways	10D	Roadway Signage	11/24/2021	1/5/2022
GMP	GMP	GMP	Roadways	26H	Roadway Electrical / Lighting / Signals	11/24/2021	1/5/2022
GMP	GMP	GMP	Roadways	32F	Roadway Construction	11/24/2021	1/5/2022
GMP	GMP	GMP	Roadways	32X	Roadways - Balance of Work	11/24/2021	1/5/2022
GMP	GMP	GMP	Terminal	34B	Passenger Boarding Bridges	11/24/2021	1/5/2022
GMP	GMP	GMP	Utilities	26G	Site Electrical Utilities	11/24/2021	1/5/2022
GMP	GMP	GMP	Utilities	33D	Site Mechanical Utilities	11/24/2021	1/5/2022
GMP	GMP	GMP	Utilities	33E	Roadway Hydrants	11/24/2021	1/5/2022
GMP	GMP	GMP	Terminal	32B	Terminal Concrete Pavement / Hardscapes	11/29/2021	12/27/2021
	GMP	GMP	Terminal	32C	Terminal Landscaping	11/29/2021	12/27/2021
	GMP	GMP	Terminal	05B	Metal Fabrications, Stairs, Railings	11/29/2021	12/28/2021
	GMP	GMP	Terminal	05E	Canopy Steel	11/29/2021	12/28/2021
	GMP	GMP	Terminal	04A	Exterior Masonry	11/29/2021	12/30/2021
	GMP	GMP	Terminal	02D	Selective Demolition	11/29/2021	1/7/2022
	GMP	GMP	Terminal	05A	Structural Steel	11/29/2021	1/9/2022

Smaller and Locally-Focused Procurements

Upcoming Bid Packages

Bid Package Description	Issue Bid Package	Bid Due Date
Janitorial Services	11/15/21	12/06/21
Modular Offices	11/15/21	12/06/21
CCTV / Security System for Office	11/15/21	12/06/21
Office Furniture	11/15/21	12/06/21
Printing	11/15/21	12/06/21
Office Supplies	11/15/21	12/06/21
Coffee / Water Service	11/15/21	12/06/21
First Aid Supplies	11/15/21	12/06/21
Building Envelope Consultant	11/15/21	12/06/21
Customer Experience Monitor	11/15/21	12/06/21
Surveying	11/15/21	12/06/21
Laser Scanning	11/15/21	12/06/21
Vibration Monitoring	11/15/21	12/06/21
Air / Noise Monitoring	11/15/21	12/06/21
Security Guards	11/15/21	12/06/21

Smaller and Locally-Focused Procurements (cont.)

Upcoming Bid Packages - Continued

Bid Package Description	Issue Bid Package	Bid Due Date
SIDA Security Escorts	11/15/21	12/06/21
Badging / Entry System	12/01/21	12/22/21
Storage Containers / Watchman Huts	11/22/21	12/13/21
General Labor	11/15/21	12/06/21
Temporary Fence and Gates	11/15/21	12/06/21
Temporary Protection	11/15/21	12/06/21
Street Sweeping	11/22/21	12/13/21
Snow Removal	11/15/21	12/06/21
Construction Parking Lot Improvements	11/15/21	12/06/21
Temporary Heating/Cooling	11/15/21	12/06/21
Dumpsters / Trash Hauling	11/15/21	12/06/21
Final Cleaning	11/15/21	12/06/21
Glass Cleaning	11/15/21	12/06/21
Pest Control	11/15/21	12/06/21
Misc Tools and Hardware	11/15/21	12/06/21

Smaller and Locally-Focused Procurements (cont.)

Upcoming Bid Packages - Continued

Bid Package Description	Issue Bid Package	Bid Due Date
Webcam System	11/15/21	12/06/21
Photography	11/15/21	12/06/21
Temporary Signage	11/15/21	12/06/21
Onsite Medic	11/15/21	12/06/21
Site Safety Manager	11/15/21	12/06/21
Temporary Toilets	11/15/21	12/06/21
Lull Rental	11/15/21	12/06/21
Scaffolding	11/15/21	12/06/21

JFK T6 in Relation to its local communities and MWBE

- **Serving local communities** with business opportunities from the JFK T6 development and operations is **a top priority** of JMP and AECOM Hunt as the DB partner team
- Both PANYNJ and Empire State Development Corporation maintain their respective lists of registered and certified local firms
- Over 1,200 firms for Cat II (design) and Cat III (construction) work have been identified within Tier 1 (37 zip codes) as of early September 2021 by AECOM Hunt
- As the JFK T6 project buildout advances through 2027 into operations after construction, JMP is **committed to a long-term relationship** with the local communities to maximize the business opportunities through end of Lease in 2060

Defining LOCAL for Contracting

Tier 1 - Within the 37 zip codes surrounding JFK

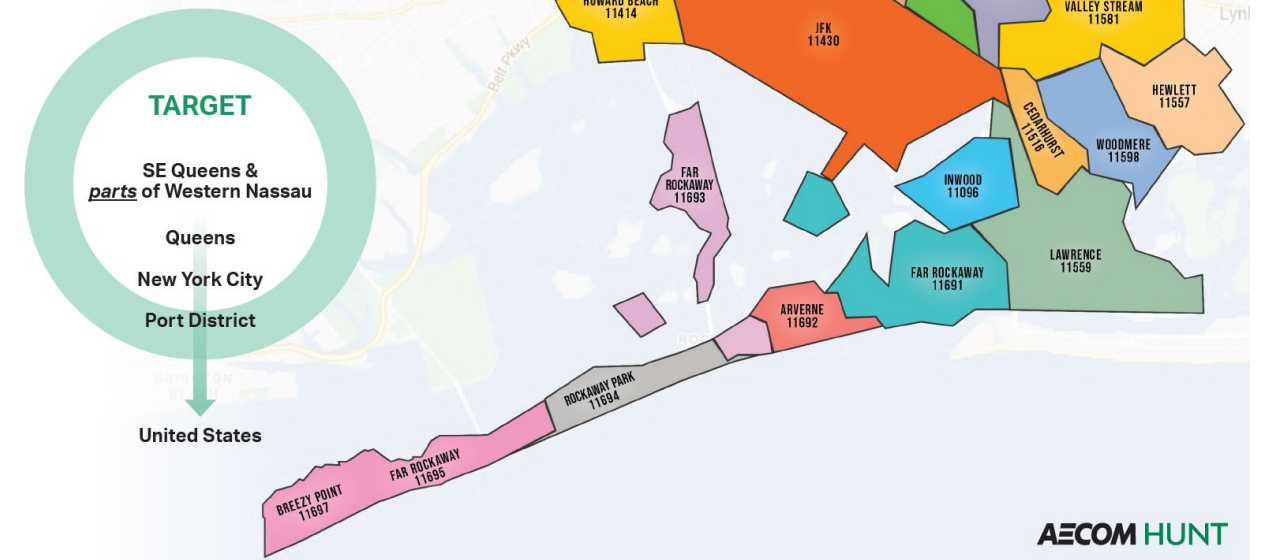
Tier 2 - Within the Borough of Queens

Tier 3 - Within the Boroughs of Brooklyn, Bronx, Manhattan and Staten Island

Tier 4 - Within the Port District

NY: Kings, Queens, Bronx, New York, Richmond, Westchester, Rockland, Nassau and Suffolk

NJ: Bergen, Passaic, Hudson, Essex, Morris, Union, Somerset, Middlesex and Monmouth



We welcome your participation

JFK Millennium Partners

Join JMP's Virtual Office Hours

New JFK Terminal 6 – Learn About Opportunities with JMP and AECOM Hunt

AUGUST 18, 2021

Overview:

The Board of Commissioners of the Port Authority of New York and New Jersey approved a public private-partnership agreement with JFK Millennium Partners to build a new \$3.9 billion state-of-the-art Terminal 6 at JFK International Airport. The new terminal, which will connect to JetBlue's Terminal 5, will create an anchor on the north side of the airport. All of the \$3.9 billion cost to build the new terminal will be privately financed by JMP. This private investment is a testament to the partners' commitment to the future of JFK and New York.

This webinar will provide an overview of contract opportunities that are available for local, minority and women owned firms through all phases of the project including professional services, design, and construction. You'll hear from key members of the JMP team as well as the design-builder AECOM Hunt.

AUGUST 18th, 2021, 1PM-2:30PM

This will be an online webinar.
Click on the box to register:

REGISTER HERE

WWW.ANEWJFK.COM/JETBLUETERMINAL6/

- Active engagement with local and MWBE Community
- Over 1200 attendees at **Virtual Office Hour Meetings** throughout the past year
- Strong engagement with local and MWBE Community including:
 - Email Blasts
 - Phone Calls
 - One-on-One Meetings
- **In Person Meetings** - 1st Thursday of Every Month
- AECOM Hunt created "**Pathways to Compete**" program to assist firms with pre-qualification
- **Prime Bidder Connect:** Wednesday Virtual Office Hours meetings to be used for teambuilding sessions and networking between primes and MWLBE businesses
- **PLA concluded with a special provision** that exempts **MWLBE contracts** with value **under \$3 million** that is capped at 5% of the total prime contract to ensure flexibility of subcontracting opportunities for MWLBE

Upcoming Events

October 2021	Organization	Event Title	Event Format
1st and 3rd Wednesday	JMP / AECOM Hunt	Virtual Office Hours	Virtual
Every Tuesday	JMP / AECOM Hunt	JMP / AECOM Hunt Pathway to Connect and Compete: Pre-bid orientation process	Virtual
7		Competitive Edge Conference	Virtual
8-9	NAACP (Economic Development)	Virtual Conference	Virtual
TBD	NAACP	JMP / AECOM Hunt Pathways to Connect and Compete: Trade Tapp Focus	Virtual Introduction to 15 NY based affiliates
14-15	National Association of Minority Contractors (NAMC)	52 nd Annual Conference & Awards Ceremony	In Person (AECOM is sponsor)
21	Council for Black Architecture and Engineering and Construction	JMP/ AECOM Hunt Pathway to Connect and Compete: Trade Tapp Focus	Virtual
27	National Association of Minority Contractors (NAMC)	Doing business with the PANYNJ: Featuring JFK's Redevelopment at Terminals 4 and 6	Virtual
TBD	Alliance of Asian Architects and Engineers	JMP / AECOM Hunt Pathways to Connect and Compete Presentation: Trade Tapp Focus	Virtual

Guidelines on Qualifications Process for MWBE Firms

As a **MWBE Prime Contractor**

- Valid MWBE certification from PANYNJ or NY Empire State Development Corporation
- Commitment to MWBE package goals and local workforce requirements
- Undergo MWBE Commercially Useful Function assessment/validation
- Complete AECOM/Hunt online contractor pre-qualification and risk-assessment questionnaire via Building Connected/Trade Tapp platform
- Insurance (in accordance with Port Authority New York/ New Jersey requirements)
- 100% Payment & Performance Bond
- Adhere to Safety Program and Requirements

As a **2nd tier MWBE subcontractor**

- Valid MWBE certification from PANYNJ or NY Empire State Development Corporation
- Undergo MWBE Commercially Useful Function assessment/validation
- Insurance (in accordance with Port Authority of New York/ New Jersey requirements)
- Bonding (determined by Prime Contractor)
- Adhere to Safety Program and Requirements

All interested parties will use BUILDING CONNECTED portal for qualifying and bidding

JMP stands ready to enable MWLBE communities to participate widely in the JFK Terminal 6 Project delivery

We look forward to connecting with you

General MWLBE enquiries

jean@jeankristensenassociates.com

Category I – Financial and Professional services

info@jfkt6.com

Category II / III – Design and Construction

JFK_T6_INFO@AECOM.COM

Diversity Help Desk:

463-203-4790

Website

anewjfk.com/jetblueterminal6

JFK Millennium
Partners

THANK YOU