

JFK Redevelopment Program

Community Advisory Council Meeting

12.15.2022



AIR LAND RAIL SEA

**JFK Redevelopment Community Advisory Council Facilitator
Dr. Stacie NC Grant**

Dr. Grant welcomed everyone to the final Advisory Council Meeting of the year and shared Holiday Greetings. After reviewing the agenda, everyone was reminded about the importance of this work and active participation needed from committee members sharing these opportunities with our local community.

Agenda

- **Welcome – Congressman Gregory W. Meeks and Borough President Donovan Richards**
- **Greetings – Manager of External Affairs & Community Outreach, Rachelle Antoine**
- **Port Authority of New York & New Jersey Updates**
- **JFK Redevelopment Diversity in Contracting and Local Workforce Updates**
 - JFKR MWBE & LBE - Monthly Public Reporting
 - JFKR Local Construction Workforce Updates, Crescent Consulting
- **Terminal Developer Updates**
 - T6 – JFK Millennium Partners
 - T4 – Delta Air Lines/JFKIAT
 - T8 – American Airlines
 - T1 – The New Terminal One
 - Aeroterm – North Cargo Redevelopment
- **Committee Reports and Community Initiatives Updates**
 - Workforce Development Committee, Co-Chairs
 - CAO Rockaway Career Center, Andrew Campbell
 - Education Committee, Co-Chairs
 - JFKR x York STEM Aviation Program
 - Institute of Concessions, Suzette Bather-Taylor
- **Community Information Center Updates**
- **Q&A**

Welcome



Congressman Gregory W. Meeks
Co-Chair,
JFK Redevelopment Community Advisory Council



Queens Borough President Donovan Richards
Co-Chair,
JFK Redevelopment Community Advisory Council



JFKR Manager, External Affairs and Community Outreach



Ms. Rachelle Antoine



Congressman Meeks welcomed everyone and reminded the Developers about the importance of having the community's input. While there were delays due to the pandemic, that time has passed, and this is the kickoff to a new beginning. He charged the Developers to ensure the community is included in a big way in every part of these projects because of all the impacts this redevelopment will have on the environment and economics of the surrounding areas. Every elected official will be holding the Developers accountable as we build a World Class Airport. Likewise, he cautioned community members that they will not just be given jobs or contracts. Everyone will have the opportunity to compete if you come right. Support is available at the JFKR Resource Center and Developers to assist workforce and local businesses. Businesses can also consider joint ventures as a way to partner and compete for contracts. The goal has been set for 30% MWBE utilization goal. Additionally, he charged members of this committee and the community with coming up with initiatives and concrete ideas to present for funding. If everyone involved is doing what is required, the support will be given. Everyone will be held accountable for the success of this project. He promised the Developers he would fight for them if they were doing the right thing but if not, he would hold them accountable. Likewise, he promised to support and help the community, but the community must do their due diligence. Congressman Meeks closed with commending Co-Chair Richards for advocating for Queens and bringing the money into our communities.

Borough President Richards underscored the sentiments of Congressman Meeks and thanked him for his leadership. Communities that have been historically disinvested in will receive attention as we get to reimagine and reshape our communities. He highlighted other exciting news in Queens including a new soccer stadium, affordable housing, a new school across from Citi Field, Queens Forward and the Jamaica Avenue development, the gateway of Queens. Additional opportunities coming on board with Bartlett Dairy in 2024 with new jobs coming to SE Queens. With all the JFKR Developers now on board, we have the opportunity, to not just build a world class airport, but to move people into the middle class and beyond. We anticipate thousands of Union jobs by creating partnerships like the apprenticeships with the Carpenter Union. The expectation is for the Developers to go into places they have historically not going in to or feel comfortable going in to. He thanked the Developers for their outreach to ensure capacity building will continue for community members and businesses. He charged the community to get in their concrete proposals submitted with real numbers and offered support from his office (QueensBP.org) with capacity building for workforce, businesses, and non-profits. This Advisory Council is a coalition of partnerships whose goal is to maximize opportunities. We must create upward mobility for our community by sharing these opportunities. He closed with thanking the Port Authority for their support and will ensure that their promises are kept. Everyone will be held accountable for this investment in communities that have been historically disinvested in.

Business Co-Chair Senator Sanders greeted everyone and underscored that this is the time to get extra serious on the issues impacting the community. For an example, as these jobs are being created, infrastructure needs to be in place for our Aviation High Schools. As one of the composers of the MWBE law, he wants to see the participation and proper development of MWBEs and local businesses.

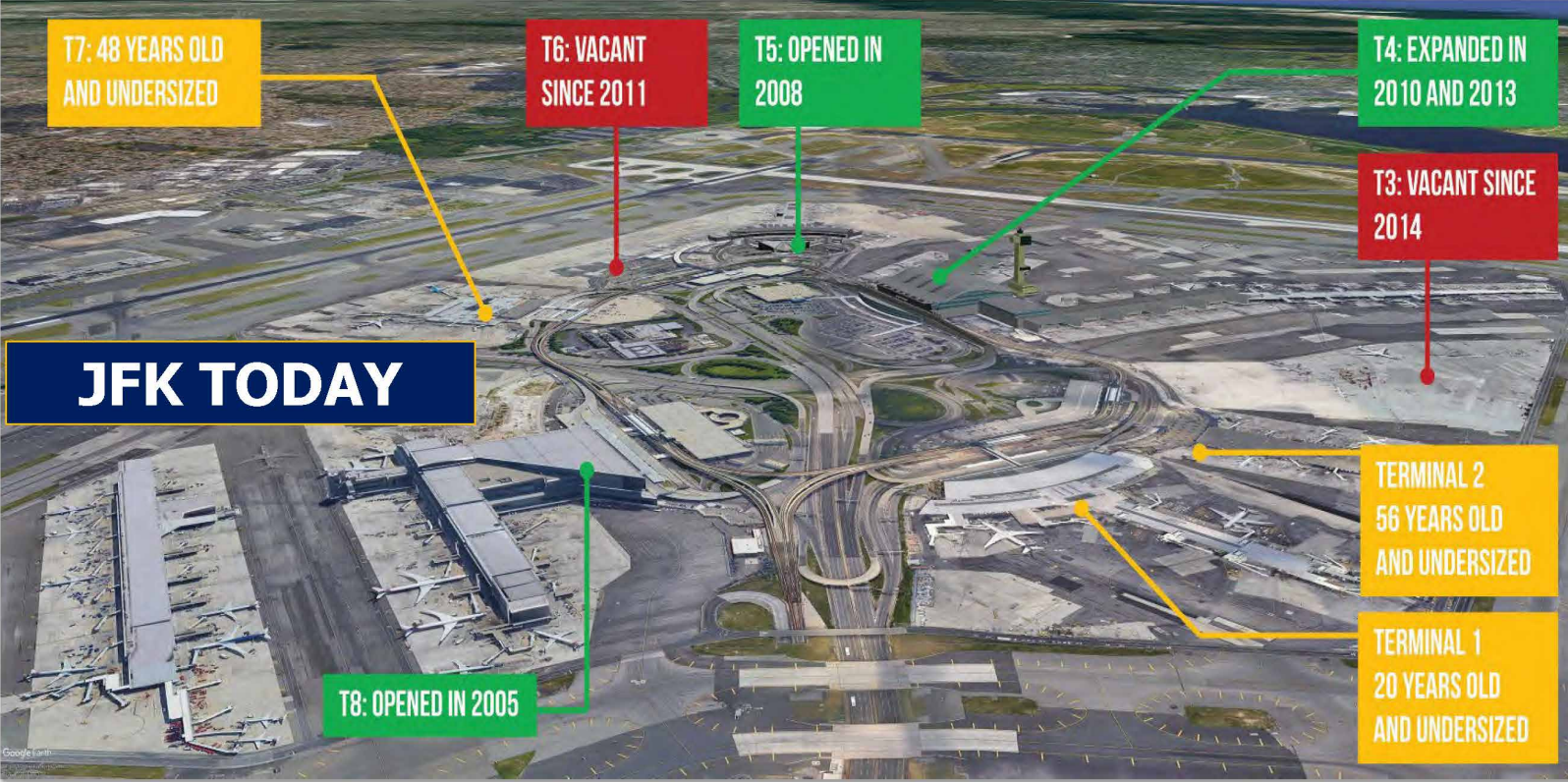
Education Co-Chair Assemblywoman Alicia Hyndman gave greetings on behalf of herself and her Co-Chair Dr. Eanes. She celebrated the tangible results from the work of this committee, like the Summer Aviation Program, Women in Aviation Program and Flight Simulator at York College. The work we do now is important to ensure opportunities for future generations. We are transforming lives in SE Queens by creating a pipeline in aviation for our young people.

Business Development Co-Chair Justin Rogers welcomed everyone and expressed his excitement about our work in 2023.

Assemblywoman Vivian Cook was recognized for her support and presence.

Community Outreach Manager Rachelle Antoine welcomed everyone and recognized Advisory Council Members and the Terminal Developers present. She asked everyone for help with the outreach to Churches and local organizations.

Director, Government & Community Relations – NY, Hersh Parekh welcomed everyone and shared the project overview and additional updates.



6

JFK Redevelopment: Program Overview

- 4 distinct public-private partnerships
 - 3 on pause during COVID-19 pandemic
- Private investment = \$15+ Billion
- PANYNJ investment = \$2.9 Billion
- Leveraging public dollars at a 5:1 ratio

Total JFK investment = \$18+ Billion

7

JFK Redevelopment: Momentum

Terminal 8

(American Airlines / British Airways):

Terminal 4

(Delta Air Lines / JFKIAT):

New Terminal One

(Ferrovial / Johnson Loop Capital / Ullico):

Terminal 6

(Vantage / American Triple I / RXR / JetBlue):

- **Groundbreaking – Jan. 2020**
- **Expansion opened December 1st**
 - **British Airways moved in**
- **“New” Deal – April 2021**
- **Groundbreaking – Dec. 2021**
 - **Move out of Terminal 2 in Q1 2023**
- **“New” Financial close Jun. 2022**
- **Groundbreaking – Sept. 2022**
- **“New” Financial close Nov. 17th**
- **Groundbreaking – Q1 2023**

8



JFK Redevelopment: Supplemental EA

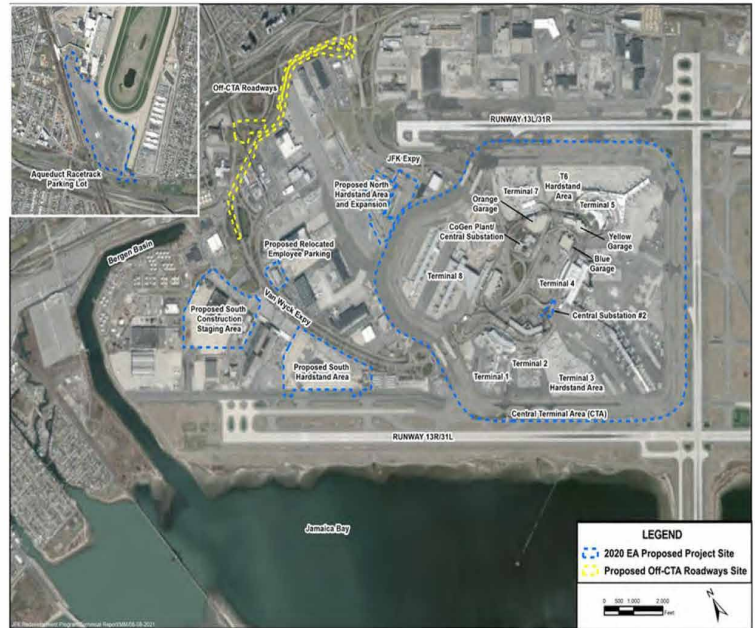
- April 2020 – JFKR Environmental Assessment (EA) received a Finding of No Significant Impact (FONSI) from the FAA in April 2020.
- Opportunities to further simplify the CTA roadway network
 - Improve traffic circulation and wayfinding
 - Reduce construction duration and complexity
 - Construction schedule changes due to COVID-19 pandemic
- Supplemental EA to evaluate modifications and identify potential new environmental impacts.
- Program modifications to be evaluated as part of the Supplemental EA include:
 - Extension of the Construction Schedule
 - Simplification of the CTA Roadways
 - Additional Off-CTA Roadways
 - Reduction in the size of the Ground Transportation Center

11



JFK Redevelopment: Supplemental EA Program Changes

- CTA Roadways Simplification
 - Further reduce number of CTA terminal zones from 3 to 2
- Off-CTA Roadways
 - Construct VWE Loop Ramp exit
 - Construct lane on Nassau Expwy
 - Construct Westbound Connector
- Ground Transportation Center
 - Reduce footprint: 16 acres to 13.5 acres
- Schedule Change – Construction completion in 2029



12

JFK Redevelopment: Supplemental EA – Public Outreach

- Draft Supplement EA available for public review and comment: December 16, 2022 to January 17, 2023.
 - Electronic copy: <https://www.panynj.gov/studies-reports>
 - Hard Copy available at 3 locations
 - JFK General Manager's Office
 - JFKR Community Information Center
 - 4 World Trade Center
- IN-PERSON INFORMATION SESSION: One in-person Information Session at Crowne Plaza JFK Airport Hotel on Thursday, January 5th, 2023 from 4:00PM – 7:00PM
- VIRTUAL INFORMATION SESSION FORMAT: Two virtual Information Sessions will be conducted via the Zoom platform and will be recorded for record keeping purposes on Tuesday, January 3rd, 2023 from 6:00PM – 9:00PM and Wednesday January 4th, 2023 from 6:00PM – 9:00PM
 - Registration link: https://bit.ly/JFKR_SEA

13

Co-Manager, External Affairs & Community Outreach

- Responsible for co-managing public outreach and community relations for the JFK Redevelopment program (JFKR). The Manager, External Affairs & Community Outreach will be part of the Port Authority's JFKR program management team and act as the one of the primary points of contacts for public outreach and community engagement.
- For full job description or to refer a candidate email: jfkdevelopment@panynj.gov
- To apply, please email: CoMgr_ExternalAffairs_CommunityOutreach@gov-docs.e-builder.net.

Co-Manager, External Affairs & Community Outreach

What We're Looking For

In October 2018, New York's Governor announced a historic plan to redevelop and transform John F. Kennedy International Airport into a modern 21st century airport. The Port Authority of New York and New Jersey is implementing this redevelopment program. The JFK Redevelopment Program is currently seeking a motivated and experienced individual to co-manage the public outreach and community relations aspects of the program. The Co-Manager, External Affairs & Community Outreach will be part of the program management team and act as one of the primary points of contact for public outreach and community engagement for the JFK Redevelopment Program. The position reports to the Port Authority's Director of Government and Community Relations - New York (GOCOR-NY) and the Program Director of JFK Redevelopment at the Port Authority.

Responsibilities include:

- Serves as one of the primary points of contacts with external community and governmental stakeholders, including but not limited to the JFK Redevelopment Community Advisory Council (JFKRCAC), on information about the Program. Schedules and coordinates stakeholder meetings and public information sessions, including but not limited to JFKRCAC and its Committees.
- Subject to approval, designs and implements, in collaboration with the JFKR Community Information Center (CIC) staff, GOCOR-NY, and others, a Public Outreach Program to keep the community informed. Co-Manages the CIC located in Jamaica, NY. Provides routine regular, formal and informal updates to the public at community meetings and other community events.
- Subject to approval, drafts and prepares, in collaboration with JFKR program staff, CIC staff, GOCOR-NY, and other PA staff, materials, handouts, periodic updates, newsletters and displays for ongoing public involvement. Provides content for the dedicated public outreach website and for the Authority's Program website. Maintains database of all interested persons, businesses, and organizations participating in the program or from the community. Submits weekly summaries of public participation efforts and outcomes.
- Informs, educates, and directly engages continuously with all those interested within the community program, including by attending and tabling at community events hosted by elected officials, community organizations, faith-based organizations, and others. Solicits feedback from elected officials, community leaders, local businesses, other stakeholders, community boards and other local community groups. Represents the Program at community events sponsored by the Program and/or Program partners.
- Works with the other key Program stakeholders, including Program consulting firms, terminal operators, airlines, contractors, etc. in public communication efforts. Maintains effective relationships and communications with key units within the PA, such as the Aviation Department, Office of Diversity, Equity & Inclusion (ODEI), and Office of Chief Communications Officer.
- May assist in activities needed to obtain and maintain necessary approvals, permits, or agreements with external agencies (including, but not limited to the FAA, NYSDOT, NYSDOT, NYSDOT, etc.) to supplement the Program.
- Coordinates and supports the management of periodic job fairs in partnership with the Council for Airport Opportunity and others, capacity building programs for local businesses, education



MWBE & LBE Participation: through Oct 2022

The Port Authority of NY NJ					
Type of Firm	Awards \$389M		Payments \$262M		No. of Firms
MBE	\$65M	17%	\$49M	19%	97
WBE	\$27M	7%	\$25M	9%	63
LBE Tier 1	\$10M	2.5%	\$6.5M	2.5%	21
LBE Tier 2	\$11M	2.8%	\$6M	2.3%	16

The New Terminal One / T1					
Type of Firm	Awards \$1.7B		Payments \$404M		No. of Firms
MBE	\$196M	12.0%	\$56M	13.9%	122
WBE	\$109M	6.4%	\$23M	5.8%	56
LBE Tier 1	\$61M	3.6%	\$6.8M	1.7%	26
LBE Tier 2	\$60M	3.5%	\$740K	0.2%	12

MWBE & LBE Participation: through Oct 2022

Delta Air Lines / JFKIAT / T4					
Type of Firm	Awards \$777M		Payments \$238M		No. of Firms
MBE	\$185M	23.8%	\$71M	30.0%	89
WBE	\$99M	12.8%	\$32M	13.4%	59
LBE Tier 1	\$12.2M	1.6%	\$4.08M	1.7%	13
LBE Tier 2	\$43.9M	5.7%	\$26.7M	11.2%	18

JFK Millennium Partners / T6			
Type of Firm	Awards \$XX	Payments \$XX	No. of Firms
The Terminal 6 reached financial close in mid-November. MWBE/LBE participation data is under review and will be posted beginning in 2023.			

MWBE & LBE Participation: through Oct 2022

American Airlines / T8					
Type of Firm	Awards \$385M		Payments \$295M		No. of Firms
MBE	\$89M	23.2%	\$61M	20.5%	70
WBE	\$72M	18.7%	\$44M	15.0%	42
LBE Tier 1	\$15.1M	3.9%	\$11.1M	3.7%	19
LBE Tier 2	\$17.4M	4.5%	\$12.1M	4.1%	17

Each month, updated MWBE & LBE Participation Data will be posted on ANewJFK.com.

- Awards & Payments to MBEs
- Awards & Payments to WBEs
- Awards & Payments to LBEs Tier 1
- Awards & Payments to LBEs Tier 2
- Names of all LBEs (Tier 1 & 2) that have been awarded contracts

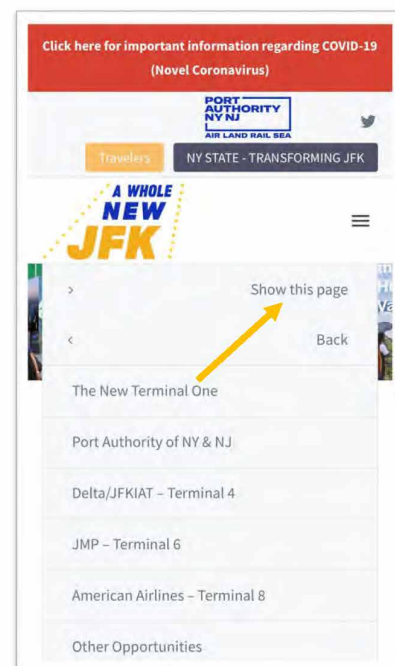
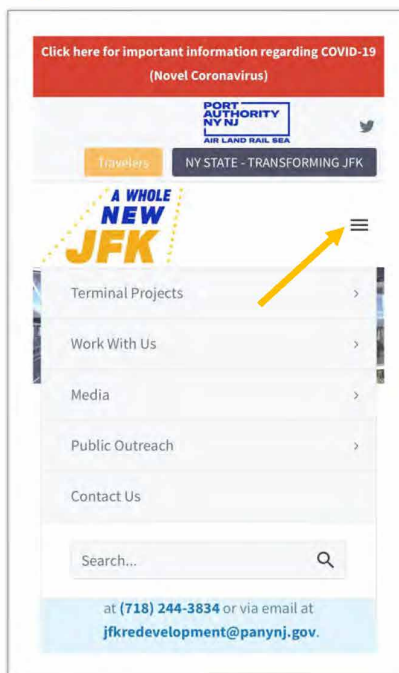
MWBE & LBE Participation: Mobile Access

Visit www.anewjfk.com

- Click hamburger menu on right side of the screen.
- From drop-down menu, click “Work With Us” tab.

After the next drop-down appears:

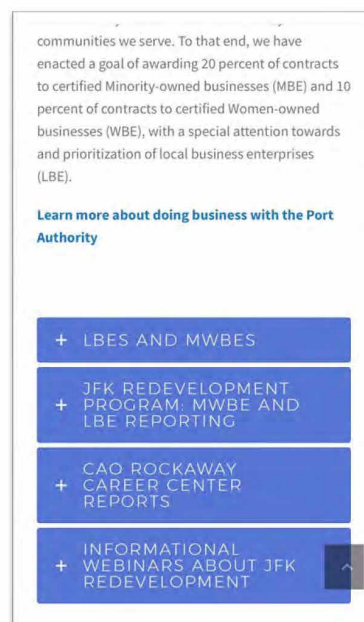
- Click on “Show this page”



MWBE & LBE Participation: Mobile Access

On “Work With Us” page.

- Scroll down the page until you see “MWBE AND LBE REPORTING”
- Click on the + to access pdf links.



Terminal 1

Local Workforce Placements

Tier 1

A total of 15 placements were made

Trade	Zip Code
14 Laborers - All male -	11423, 11691, 11559
1 Lather - Male -	11422

Project Totals	
Local Skilled – Tier 1	4.1%
Local Laborers – Tier 1	7.0%
Local Skilled – Tier 2	3.1%
Local Laborers – Tier 2	9.7%

Additional placements were made from other tiers due to the unavailability of local tradesmen.
We continue to work with the unions on a regular basis to help facilitate local workforce participation.

Terminal 1

Local Workforce Placements

Tier 1

A total of 15 placements were made

Trade	Zip Code
14 Laborers - All male -	11423, 11691, 11559
1 Lather - Male -	11422

Project Totals	
Local Skilled – Tier 1	4.1%
Local Laborers – Tier 1	7.0%
Local Skilled – Tier 2	3.1%
Local Laborers – Tier 2	9.7%

Additional placements were made from other tiers due to the unavailability of local tradesmen.
We continue to work with the unions on a regular basis to help facilitate local workforce participation.

Terminal 4

Local Workforce Placements

Tier 1

A total of 17 placements were made

Trade	Zip Code
14 Laborers - 12 male & 2 female -	11412, 11413, 11414, 11419, 11420, 11422, 11429, 11434, 11435, 11691
3 Carpenters - All male -	11414, 11417, 11691

Tier 2

A total of 10 placements were made

Trade	Zip Code
10 Laborers - All male -	11357, 11358, 11368, 11372, 11373, 11377, 11385, 11566

Project Totals	
Local Skilled – Tier 1	5.2%
Local Laborers – Tier 1	3.9%
Local Skilled – Tier 2	4.3%
Local Laborers – Tier 2	0.5%

Additional placements were made from other tiers due to the unavailability of local tradesmen.
We continue to work with the unions on a regular basis to help facilitate local workforce participation.

Terminal 8

Local Workforce Placements

Tier 1

A total of 169 placements were made

Trade	Zip Code
169 Laborers - 156 male & 13 female -	11414, 11416, 11417, 11418, 11419, 11420, 11421, 11422, 11432, 11433, 11434, 11435, 11003, 11580, 11691

Project Totals	
Local Skilled – Tier 1	8.7%
Local Laborers – Tier 1	19.4%
Local Skilled – Tier 2	7.6%
Local Laborers – Tier 2	6.6%

Additional placements were made from other tiers due to the unavailability of local tradesmen.
We continue to work with the unions on a regular basis to help facilitate local workforce participation.

Aeroterm Local Workforce Placements

Tier 1

A total of 13 placements were made

Trade	Zip Code
13 Laborers - 11 male & 2 female -	11423, 11433, 11580, 11691

*2 female Operators from Tier 3 were also placed

Project Totals	
Local Skilled – Tier 1	81.1%
Local Laborers – Tier 1	84.6%
Local Skilled – Tier 2	1.2%
Local Laborers – Tier 2	0.0%

Additional placements were made from other tiers due to the unavailability of local tradesmen.
We continue to work with the unions on a regular basis to help facilitate local workforce participation.

Total Local Workforce Placements

Tier 1

A total of 214 placements were made

Trade	Zip Code
210 Laborers - 193 male & 17 female -	11412, 11413, 11414, 11416, 11417, 11418, 11419, 11420, 11421, 11422, 11423, 11429, 11432, 11433, 11434, 11435, 11003, 11580, 11691
3 Carpenters - All male -	11414, 11417, 11691
1 Lather - Male -	11422

Tier 2

A total of 10 placements were made

Trade	Zip Code
10 Laborers - All male -	11357, 11358, 11368, 11372, 11373, 11377, 11385, 11566, 11559

Additional placements were made from other tiers due to the unavailability of local tradesmen.
We continue to work with the unions on a regular basis to help facilitate local workforce participation.

JFK Millennium Partners

JFK Community Advisory Council (CAC) Quarterly Meeting
December 15, 2022

Agenda



- JMP Structure
- Project Timeline
- Financial Close
- Outreach

JFK Millennium Partners

DEVELOPERS:

VANTAGE
AIRPORT GROUP

AMERICAN
TRIPLE I *

RXR

jetBlue®

MWBE STRATEGY & OUTREACH:

jka
SUPPLIER
DIVERSITY
CONSULTANTS *

THE
Regional Alliance
FOR Small Contractors
Building Tomorrow's Partnerships Today!

DESIGN-BUILD FIRM:

AECOM

HUNT
An AECOM Company

TERMINAL MANAGER:

VANTAGE
AIRPORT GROUP

* MWBE companies

T6 Project – A Timeline of Opportunities

Timeline



Construction of a \$4.2 Billion New Terminal 6 at JFK Will Begin Early Next Year

JFK Terminal 6 is a \$4.2 Billion Redevelopment project anchoring JFK's north side and built on the sites of the former Terminal 6 and the current Terminal 7, which will be demolished in 2025

- Financial closing occurred November 17, 2022
- With MWBE (30%) and SDVOB (3%) targeted goals on an anticipated total project development cost of **\$2.8 billion**, we project procurement of:
 - \$840 million on MWBE (\$560 mm M & \$28 mm W)
 - \$84 million on SDVOB
- Outreach activities will ramp up to communicate opportunities to MWBE, SDVOB and local firms.



Local Procurement Forecast 30/60/90 day - GCGR

Bid Number	Description	Estimated Bid Release Date
GR35	Temporary Signage	12/2022
GR40	Scaffolding	12/2022
GR05	Office Furniture	12/2022
GR06	Printing	12/2022
GR07	Office Supplies	12/2022
GR08	Coffee / Water Service	12/2022
GR09	First Aid Supplies	12/2022
GR23	Temporary Protection	12/2022
GR24	Street Sweeping	12/2022
GR25	Snow Removal	12/2022
GR26	Construction Parking Lot Improvements	12/2022
GR27	Temporary Heating/Cooling	12/2022
GR31	Pest Control	12/2022
GR32	Misc. Tools and Hardware	12/2022
GR33	Webcam System	12/2022
GR34	Photography	12/2022

JMP Outreach – Q3 & Q4 2022

Date	Event Title
7/6/2022	MWBE Office Hours
7/21/2022	MWBE Match Maker – Russo's
8/10/2022	MWBE Office Hours
8/16/2022	Target Trades
9/7/2022	MWBE Office Hours
10/6/2022	NYSE MWBE Forum
10/12/2022	Targeted Trades
10/25/2022	JMP/AECOM Match Maker
10/31/2022	Competitive Edge
11/02/2022	MWBE Office Hours
11/22/2022	Training Tuesday
12/7/2022	MWBE Office Hours

JFK Millennium Partners

3
6

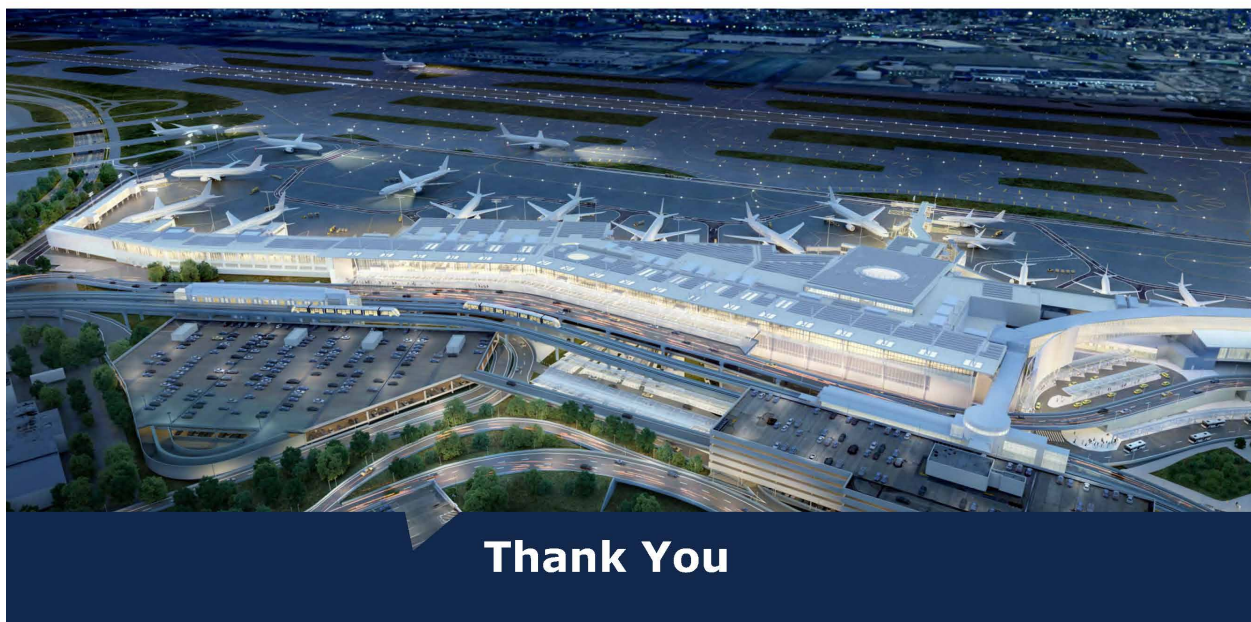
JMP/AECOM Outreach



JFK Millennium Partners

3
7

JFK Millennium Partners



Thank You

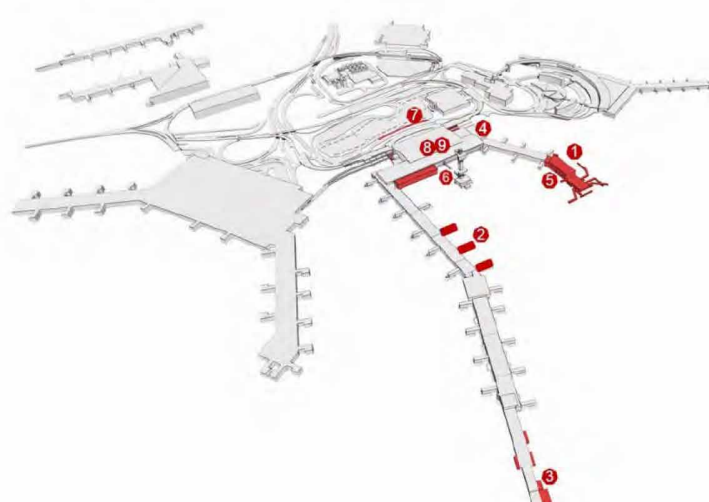


JFK TERMINAL 4 EXPANSION | PROGRAM UPDATE

JFK REDEVELOPMENT ADVISORY COUNCIL MEETING

December 15, 2022

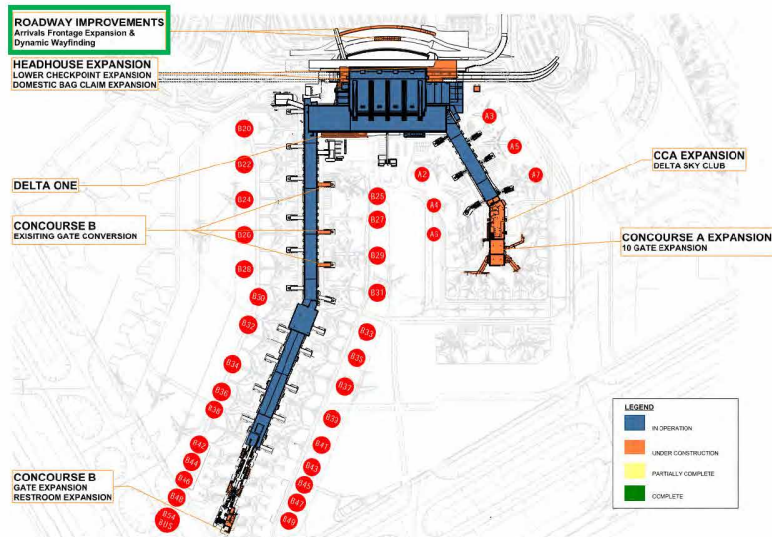
PROGRAM | OVERVIEW



The current Terminal 4 expansion program is a \$1.5B construction program comprised of the following nine main elements:

1. Concourse A Extension
2. Concourse B Wide-Body Gate Conversion
3. Concourse B RJ Gate Conversion and Holdroom Expansion
4. Headhouse Expansions
5. Concourse A Delta Sky Club
6. Delta ONE Check-in and Lounge
7. Roadway Improvement
8. Terminal Transformation
9. One JFK Branding and Signage Upgrades

CONSTRUCTION UPDATE | ROADWAYS

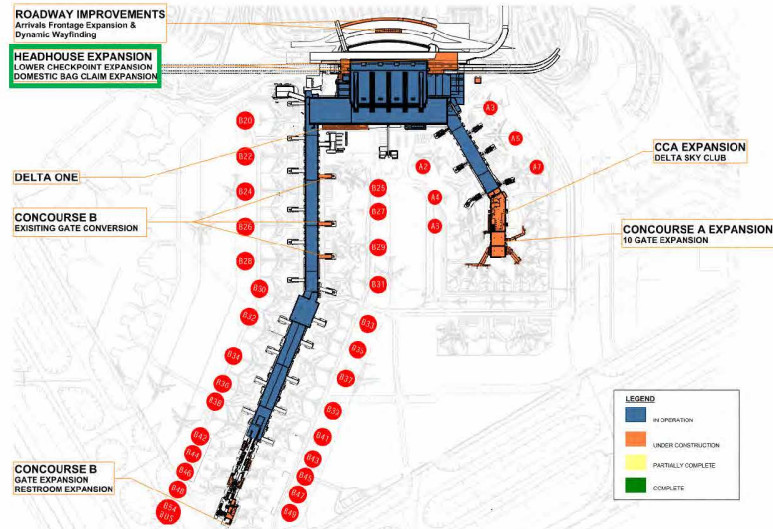


Activate new curb frontage & Wayfinding Signage:	Spring 2023
Status:	On Time



New Arrivals Level Curb with Digital Signage

CONSTRUCTION UPDATE | HEADHOUSE



Activate Expanded Checkpoint Queuing Area:	July 2023
Status:	On Time

Activate New Domestic Baggage Claim:	September 2023
Status:	On Time

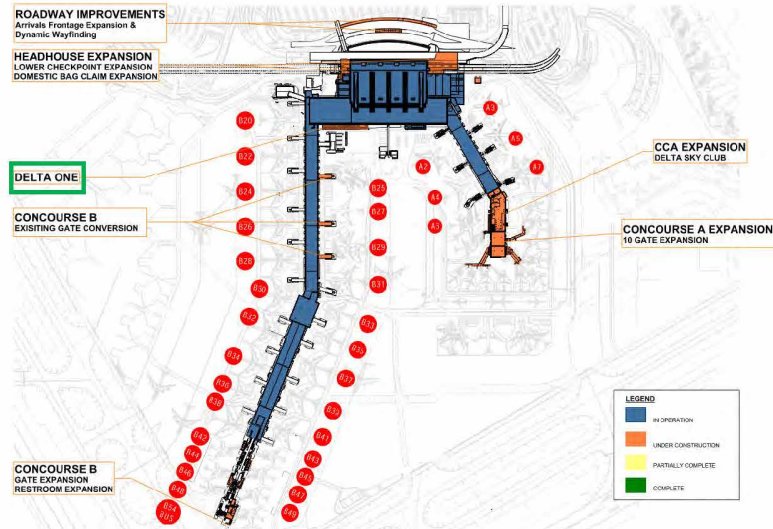


Steel Erection at Domestic Bag Claim Expansion



JFKIAT

CONSTRUCTION UPDATE | DELTA ONE



Activate new Delta One Lounge:	1Q24
Status:	On Time

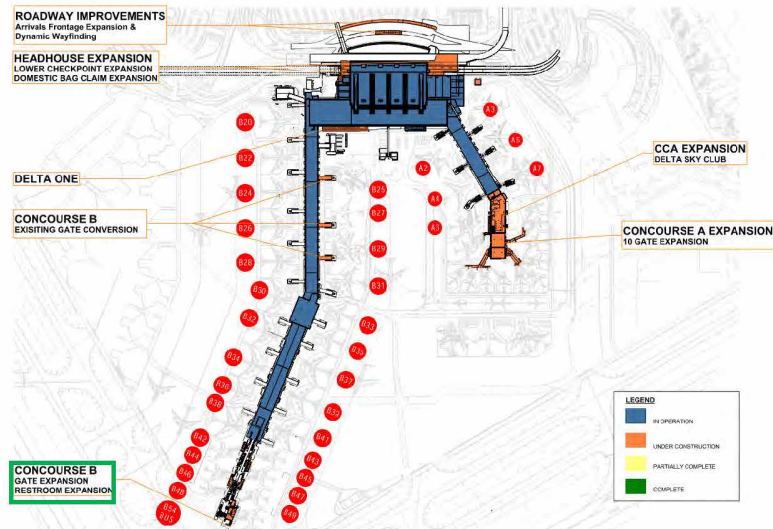


Concrete Foundation



JFKIAT

CONSTRUCTION UPDATE | CONCONOURSE B



South Gates and New Restrooms:	December 2022
Status:	On Time
North Gates	July 2023
Status:	On Time

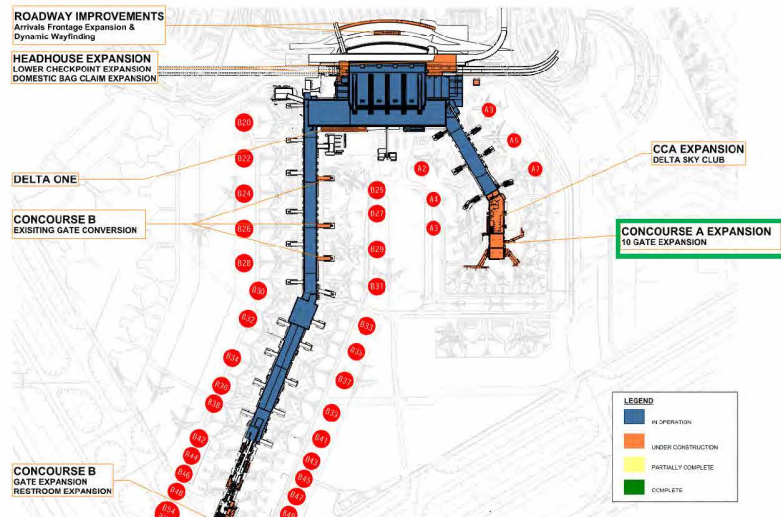


Expanded Gates B53 and B55



JFKIAT

CONSTRUCTION UPDATE | CONCOURSE A



Activation of new Gates:	January 2023
Status:	On Time
Full Activation (Levels 2 - 4):	July 2023
Status:	On Time



Installing Finishes and Seating

LOCAL PARTNERS | SPOTLIGHT



Queensbridge Cleaning

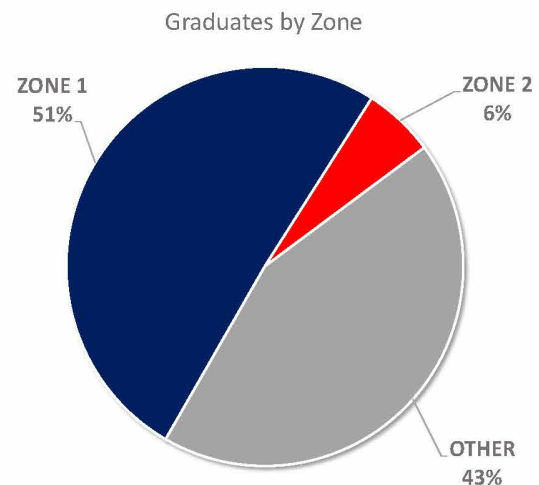
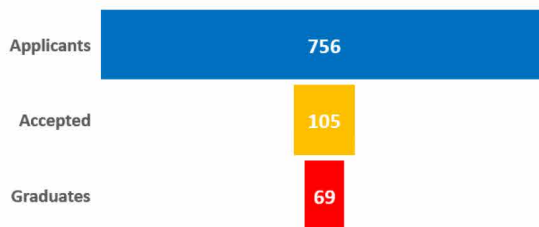
PANYNJ MBE Certified, Cambria Heights, NY

Approximate contract value to date = \$683,000

"Working with the Delta Air Lines construction management team has shown me that dreams do come true."

Bernard Garrett
Owner

SECURITY TRAINING PROGRAM | SUMMARY



SECURITY TRAINING PROGRAM | GRADUATES



JFKIAT

DELTA

SECURITY TRAINING PROGRAM | PROFILE

ANGELITA RODRIGUEZ

Corona, NY

Hired by PAX Assist, Terminal 1



TERMINAL | TRANSFORMATION

The Terminal 4 Transformation is a component of the Terminal 4 Expansion and Redevelopment program. This program, at \$154m is the basis for Terminal enhancements which will optimize areas of the Terminal holistically. These elements focus on People, Processes, Place and Technology. Together with the Delta Redevelopment and expansion, the Terminal Transformation program is an integral part of the overall Airport Vision Plan of transforming JFK into a World Class airport. Areas of Transformation have been fundamentally prioritized within the \$1.5b Terminal 4 Expansion plan to match this vision.



The Transformation Work is comprised of the following seven main elements:

1. AirTrain Infill and Ticket Desk Relocations
2. Amenities and Restrooms
3. Departures Hall Renovations
4. Artwork Program
5. Concourses A & B Holdroom Renovations
6. Commercial (Concessions) Upgrade
7. One JFK Branding and Signage Upgrades

JFKIAT

DELTA

TERMINAL | TRANSFORMATION



Departures Level Renovations Program:

- Phased renovation of five (5) Airline Check In Rows to include Self Serve Kiosks, Bag Drops and new Counters
- Project was awarded to the VRH Construction in October 2022
- Meet the Primes for subcontractor and local participations were held in October and November 2022
- Construction to begin QTR1 2023

Restroom Renovation Program:

- Full demolition and renovation of eighteen (18) existing restrooms which includes upgraded finishes, ceiling, floors and walls
- Meet the Primes for subcontractor and local participation were held in October and November 2022
- Project was awarded to Holt Construction in November
- Construction to begin QTR2 2023.



JFKIAT | OUTREACH EVENTS LOCAL, MINORITY, AND WOMEN-OWNED BUSINESS ENTERPRISE

2022 3rd & 4th Quarter Outreach Events	
8/29/2022	Back to School (Macedonia AME Church)
9/12/2022	JFK Chamber Golf Outing
9/14/2022	Little Amal Comes to JFK Terminal 4
9/15/2022	RDRC Annual Community Builders Award Gala
9/20/2022	The Faithpreneur Experience
9/21/2022	JFK Rotary Dinner
9/24/2022	Jamaica Q 5.5 K Race Hosted by the GJDC
10/1/2022	Girls in Aviation: Madams In Motion
10/6/2022	12th Annual MWBE Forum (Albany)
10/13/2022	Our Lady of Sky Luncheon
10/20/2022	August Martin High School 4Good Award
10/20/2022	LIFE Camp, Inc. 4Good Award
11/1/2022	York College - CUNY Aviation Institute 4Good Award
11/1/2022	Greater Allen A.M.E. Cathedral of New York 4Good Award
11/1/2022	Jamaica Center Business Improvement District 4Good Award
11/1/2022	Virgil I. Grissom Middle School 4Good Award
11/3/2022	Boys and Girls Club of Metro Queens 4Good Award
11/3/2022	LGBT Network 4Good Award
11/3/2022	Venture House 4Good Award
11/3/2022	Greater Jamaica Development Corporation 4Good Award
11/3/2022	Vaughn College of Aeronautics and Technology 4Good Award
11/15/2022	Queens Chamber of Commerce: Supporting Veteran Business Owners Event
11/18/2022	Senator Comrie / The Family Legacy Annual Turkey Drive (Macedonia AME Church)
11/18/2022	KAAMCO & KAAMCO Cargo 2022 Dinner Dance
11/22/2022	Donation of Turkeys To Bethany's Baptist Church of Jamaica
11/29/2022	VETCON 2022 Veterans in Economic Transition Conference (Albany)



JFKIAT | OUTREACH EVENTS LOCAL, MINORITY, AND WOMEN-OWNED BUSINESS ENTERPRISE

2022 3rd & 4th Quarter Meet The Primes Events	
10/20/2022	Meet The Primes: Plumbing
10/20/2022	Meet The Primes: Electrical
11/8/2022	Meet The Primes: Misc. Metals
11/8/2022	Meet The Primes: Carpet & Painting
11/16/2022	Meet The Primes: Metal Door & Frames
11/16/2022	Meet The Primes: Signage, Curtain Wall & Glaziers

MEET THE PRIME!

A MEET AND GREET FOR MISCELLANEOUS METALS

TUESDAY, November 8 • 10:00 AM
144-33 JAMAICA AVE, JAMAICA, NY 11435

John F. Kennedy (JFK) Airport
Is Undergoing a Transformation to Bring the World
A New JFK

A piece of that transformation is the
JFKIAT
JFK Transformation 4 Project
(Currently budgeted at \$60 Million)

This event provides an opportunity to meet and have discussions
with potential prime contractors in your trade for an opportunity
to be a part of this project.

Registration is required. [CLICK HERE](#)

Seating is limited. Once capacity is reached, we cannot accept any more attendees.



List of Award Recipients	
August Martin High School	Baisley Pond Park
Boys & Girls Club of Metro Queens	Breast Cancer Awareness
The Greater Allen A.M.E. Cathedral of New York	Greater Jamaica Development Corporation
LGBT Newtork	LIFE Camp, Inc.
Venture House	Virgil I. Grissom Middle School
York College - CUNY Aviation Institute	Vaughn College of Aeronautics and Technology
Bethany Baptist Church	Jamaica Center Business Improvement District
Farmingdale State College	

JFKIAT Donates \$150K to Queens Organizations:

JFKIAT has raised and donated \$150,000 to support local Queens nonprofit organizations and institutions through our 4GOOD corporate giving program. The funds, raised in collaboration with a number of JFKIAT's partners, were facilitated by our corporate giving program, 4GOOD, which serves local institutions through philanthropic and sustainable actions. Each organization, selected through an application process, provides community aid, local business support, education, and mental health resources - pillars that are integral to JFKIAT's philanthropic priorities. JFKIAT presented a donation of \$10,000 to each organization to support their work to strengthen the local community. We are grateful to our financial and legal partners for working with us to make these contributions possible, and we are very proud to support these organizations and their efforts through our 4GOOD program.



JFKIAT STREET MARKET | PROOF OF CONCEPT



Feasibility:

- Security concerns
- Back of House space requirements
- Delivery and storage of products
- Perishable / non perishable goods handling

Vendor selection / outreach of local artisans, designers and makers:

- Taste of Ny (NY Dept. Agriculture & Markets)
- Made in Queens (Queens Economic Development Corporation)
- IAT internal distribution lists of local vendors

Objectives:

- Perform a second Proof of Concept for December
- Compare the two Proof of Concept Sample periods
- Prepare a cohesive report inclusive of all factors ie: accessibly, financial and viability for all stakeholders (will follow up Q1, 2023)
- Determine how to incorporate the lessons learned and experiences from the Proof of Concept into a larger scale, more permanent program for local vendor participation within the Terminal 4 Commercial Redevelopment Plan.

JFKIAT

DELTA

JFKIAT STREET MARKET | DIRECTORY



VENDOR / DAYS	MERCHANDISE	LOCATION / MEMBERSHIPS
1 Brittle & Beyond T-W	Vegan candy nut brittles and more	Manhattan / Made in NYC
2 Colorful NY M-T-W	Artwork, print and more	Brooklyn
3 Evolved Chocolate M-T-W	Chocolate candy	Nassau / Taste NY
4 Honey Gramz M-T-W	Honey and honey-infused cosmetics	Queens
5 Lavender by the Bay M-T-W	Lavender related products	Suffolk / Taste NY
6 Mother Earth Juice Bar M-T-W	Wellness and tea	Queens / Made in Queens
7 My Big Fat Cookie M-T-W	Cookies	Suffolk / Taste NY
8 Oh.Sweet.Mason M-T-W	Desserts	Queens / Made in Queens
9 Oats Cookies M-T	Cookies/granola	Brooklyn
10 Pudding Pan Desserts T	Pre-packaged vegan items	Queens / Made in NYC / Taste NY
11 Scent by Heaven W	Candles	Manhattan / Made in Queens
12 Selena's Gourmet M-T	Carrot based cupcakes	Manhattan / Made in NYC / Taste NY
13 Sweet Vegan M-T-W	Plant-based chocolate	Manhattan / Made in NYC
14 Tembo NYC M-T-W	Fashion and home accessories	Manhattan / Made in NYC
15 Tree Star T	Handmade soaps and candles	Queens / Made in Queens
16 Woke Creations M-T-W	Clothing, jewelry, and accessories	Queens / Made in Queens

JFKIAT STREET MARKET | PHOTOS



JFKIAT

DELTA



JFKIAT

DELTA

JFK TERMINAL 8

American Airlines

Holt

AECOM

SIEMENS



American Airlines



Terminal 8 JFK Redevelopment Program

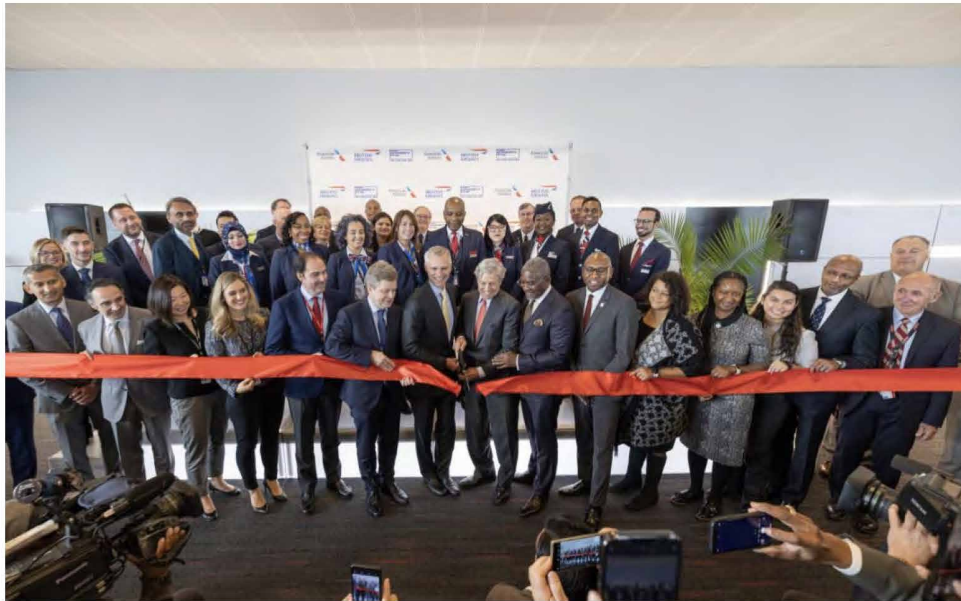
Quarterly Meeting - JFK Community Advisory Council

December 15th, 2022

AGENDA

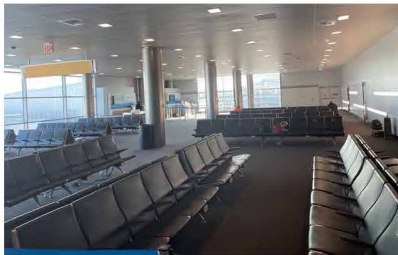
- Program Updates
- Workforce Participation
- Looking Ahead
- Concessions Program Update

Ribbon Cutting Ceremony November 29th, 2022



66

PROGRAM SCHEDULE - UPDATE



60' Bump-Out (New Gates)



Restroom Refresh Artwork



Parcel M

Program Substantial Completion Q4 2022

- 30' Bump-Out: complete
- 60' Bump-Out: complete
- Parcel M Hardstands: complete
- Concourse C Gate Reconfigurations: complete
- Baggage Handling System: substantially complete , final completion March 2023
- AA/BA Joint Lounge & Check-In: complete
- CCTV Enhancements: 90% complete, final completion Jan 2023
- Restroom Refresh: Phase 3 underway, 3 restrooms 100% complete, 5 restrooms operational with remaining artwork by 1/20/23.
- One JFK Signage: in design, to be bid Q1 2023

JFK TERMINAL 8

67

WORKFORCE PARTICIPATION – MINORITY & FEMALE

(As of October 31st, 2022)

HOURS

Total Skilled
491,315

Total Laborer
165,071

HOURS

- Minority Skilled: 177,020 (36.0%)
- Minority Laborer: 92,802 (56.2%)
- Female Skilled: 9,914 (2.0%)
- Female Laborers: 9,367 (5.7%)

Previously
(May 2022)

34.4%
57.3%

2.0%
5.0%

Partnerships to increase female and minority skilled participation

- Nontraditional Employment for Women
- Helmets to Hardhats
- Pathway to Apprenticeship
- Edward J Malloy Construction Skills

JFK TERMINAL 8

69

WORKFORCE PARTICIPATION – LOCAL TRADE/LABOR

(FROM JANUARY 2021 TO OCTOBER 2022)

*Tracking of participation based on local tier began in January 2021

HOURS*

Total Skilled
456,516

Total Laborer
157,126

HOURS*

- Tier 1 Skilled: 39,930 (8.7%) 8.8%
- Tier 2 Skilled: 34,512 (7.5%) 7.1%
- Tier 1 Laborer: 30,488 (19.4%) 16.9%
- Tier 2 Laborer: 10,448 (6.6%) 6.5%

Previously
(May 2022)

Trade/Labor Workforce	Tier	# of Employees	Current Percentage of Trade/Labor Workforce	<u>Previously (May 2022)</u>
Target Zip Codes	1	847	17.6%	16.3%
Borough of Queens	2	813	16.9%	16.1%
Remaining Boroughs	3	648	13.5%	14.2%
PANYNJ Port District	4	2484	51.7%	53.2%
Undetermined		11	0.2%	0.3%
Total Trade/Labor Workforce		4803		

JFK TERMINAL 8

70

Final Upcoming Opportunities

Final Opportunity: To be Bid Q1 2023

- One JFK Vision: Signage construction
- Additional Information can be found at

<https://www.anewjfk.com/work-with-us/work-with-american-airlines/>

This will conclude the opportunities for the T8 construction project

Terminal 8 Concessions Program

Contract Update

- American has completed negotiations with the developer; the contract is under review by the Port Authority. All parties seeking to be ready to execute the agreement in December.

MWLBE and ACDBE Participation

- The redeveloped concessions program will provide additional opportunities for MWLBes and Airport Concessionaire Disadvantage Business Enterprise (ACDBE)
- An outreach program to promote MWLBE and ACDBE participation will kick off once the contract is finalized

Additional details will be shared at the next Advisory Committee meeting



Project Update

- On September 8th, The New Terminal One, the largest terminal at JFK International Airport, broke ground and represents an integral part of the overall redevelopment program now underway.
- The reimagined terminal will have state-of-the-art technology, best sustainability practices, public art, local concessions, and revamped roadways to create a transformative and positive world-class passenger experience.
- The construction is in phases, with the arrivals and departures hall and 14 new gates set to open in 2026, just in time for the NY/NJ FIFA World Cup.
- Our extensive partnerships with the community and labor will drive historically high MWBE participation goals and diversity and deliver jobs, intentional social impact, and real economic opportunities for Southeast Queens and the surrounding communities for generations to come.

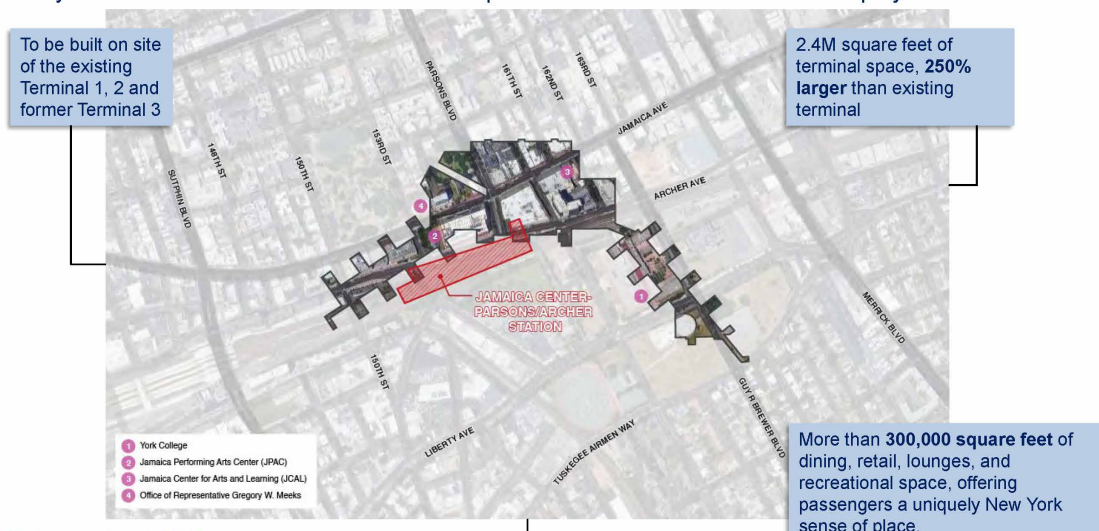


THE NEW TERMINAL ONE
JFK INTERNATIONAL AIRPORT

JFKR Advisory Council Meeting – 12/15/2022

Project Scale and Phasing

This overlay of the terminal over downtown Jamaica provides a sense of the scale of the project.



THE NEW TERMINAL ONE
JFK INTERNATIONAL AIRPORT

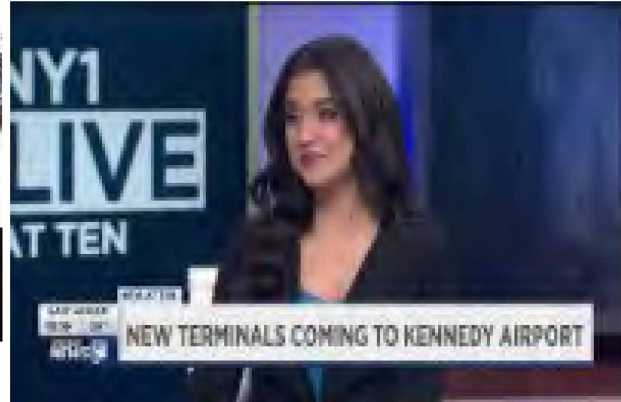
JFKR Advisory Council Meeting – 12/15/2022

NTO in the News - NY1 Highlights Local M/WBEs

On Nov 17, The New Terminal One celebrated National Entrepreneurship Month with a spotlight on our M/WBEs, who are job creators whose vision and grit fuel our economy



Featuring Carol Bennett, Acting Chief DEI Officer, PANYNJ, the Cauley Coach Inc. Family, Sullivan-Hernandez Family, Russo team and Dr. Gerrard Bushell



THE NEW TERMINAL ONE
JFK INTERNATIONAL AIRPORT

JFKR Advisory Council Meeting – 12/15/2022

NTO in the News – The New York Carib News featuring RCGA

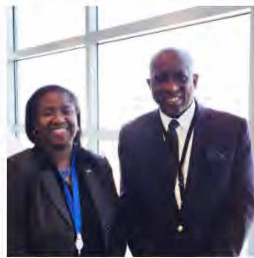
On Nov 17, *The New York Carib News* featured the work of Robert Gaskin and Martine Duphrezin of RCGA+DM Architects with The New Terminal One

Meet the Two Queens-Based Architects Changing the Game at New Terminal One

By Anna C | on October 29, 2022



THE NEW YORK
CARIB NEWS
THE WEEKLY VOICE OF THE CARIBBEAN-AMERICAN COMMUNITY



Robert Gaskin, Principal at RCGA+DM Architects and Martine Duphrezin, Principal Design Architect (Credit: RCGA+DM Architects)

Forty years ago, Robert Gaskin thought he would be flying planes. Nowadays, at the Queens-based architectural firm that he founded, the one-time pilot, now full-time architect, helps design the terminals and facilities for JFK International and LaGuardia airports in Queens and Newark. Currently, Gaskin's RCGA+DM Architects is one of the major contract recipients at New Terminal One at JFK (NTO). Gaskin and his colleagues are helping to advance the design of the new terminal—a key element of the \$9.5 billion, 2.4 million square foot project, which just broke ground in September.

While the Jamaica, NY-based firm currently has 20 employees, it began in 1997 with just three. Now, a vast majority of their work revolves around airports—"90% of our work is around the field of aviation," Gaskin says. Over the years, the firm has completed over 300 aviation projects, including major designs, such as the external canopy at Concourse C at the American Airlines terminal at JFK International Airport (for which the firm was nominated for design awards), as well as the master plan for St. Vincent's airport.

THE NEW TERMINAL ONE
JFK INTERNATIONAL AIRPORT

JFKR Advisory Council Meeting – 12/15/2022

NTO in the News – Metropolitan Airport News

The December issue of Metropolitan Airport News featured The New Terminal One



The New Terminal One at JFK

An Interview With Dr. Gerrard Bushell

JULIA LAURIA-BLUM
jblum@metropolitannews.com

Dr. Gerrard Bushell holds a genuine, deep-rooted connection to New York City, which is embodied in his role as president and CEO of the New Terminal One (NTO) at JFK International Airport. Dr. Bushell is leading the team responsible for advancing a public-private partnership with the Port Authority with a mission to address regional needs in partnership with the building of an international terminal that will offer a deep perspective to give a sense of place and an indelible sense that you are in New York City. Born in Brooklyn, Gerrard lived in Baysville and later moved to Mount Vernon, a young child, his mother taught him the importance of education and instilled a work ethic of respect to help navigate his childhood.

As a young man, Gerrard learned to try new things and to be flexible. Coming from a family of entrepreneurs in the restaurant business, he tended bar, created hot sauce, and co-ordinated the growing team that came each day at a restaurant, such as feeling and testing quality staff, and that same spirit of entrepreneurship and innovation is what he brings to the NTO.

His mother also inspired him to be a leader. He has been involved in a variety of community activities, such as being a member of the New York City Fire Department, and he has been involved in a variety of community activities, such as being a member of the New York City Fire Department, and he has been involved in a variety of community activities, such as being a member of the New York City Fire Department.

"New York is the front door to the nation, this is the gateway to the largest metro region in the country, which is New York City," he said.



Interview with Metropolitan Airport News, Dr. Bushell served in senior roles for the Port Authority of New York and New Jersey, including as President of the Port Authority of New York and New Jersey, and as a member of the Port Authority of New York and New Jersey Board of Directors. He has also served as a member of the Port Authority of New York and New Jersey Board of Directors, and as a member of the Port Authority of New York and New Jersey Board of Directors.

Dr. Bushell is a member of the Port Authority of New York and New Jersey Board of Directors, and as a member of the Port Authority of New York and New Jersey Board of Directors, and as a member of the Port Authority of New York and New Jersey Board of Directors.

Dr. Bushell is a member of the Port Authority of New York and New Jersey Board of Directors, and as a member of the Port Authority of New York and New Jersey Board of Directors, and as a member of the Port Authority of New York and New Jersey Board of Directors.

THE NEW TERMINAL ONE
JFK INTERNATIONAL AIRPORT

JFKR Advisory Council Meeting – 12/15/2022

Our World-Class Team

FINANCIAL SPONSORS	   
CAPITAL PROJECT DELIVERY	     
DESIGN-BUILDER	 
MASTER CONCESSIONAIRE	

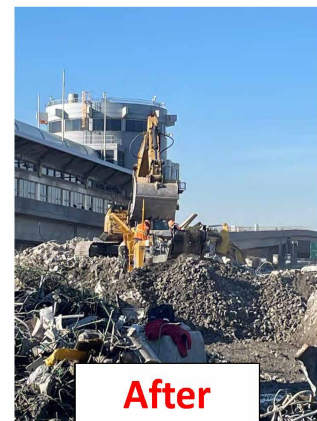
THE NEW TERMINAL ONE JFK INTERNATIONAL AIRPORT

JFKR Advisory Council Meeting – 12/15/2022

Construction Progress to Date



- Demolition of the Green Garage, the first key construction activity, was led by two local firms
- The Airtrain shutdown of T1 and T2 Stations started on September 26, and successfully concluded on November 18
- The project continues on-time and on budget



Design Builder Procurement Opportunities

30, 60, 90-Day Forecast

- Temporary Carpentry
- Carpentry
- Ornamental Metal & Glass
- Interior Wall Paneling
- Dock Guidance & Ramp Signage
- Low Voltage Security/ Telecom Parts & Smarts

December 2022

- Low Voltage Radio, DAS Parts & Smarts
- Hoisting & Scaffold
- Spray on Fireproofing

January 2023

- General Construction
- Telecom Install
- Roadway Canopies
- Flooring
- Terrazzo
- Millwork
- Painting
- OH & Specialty Doors
- Landscaping
- Security Install
- Wi-Fi, DAS Cellular, Public Safety/Mobil Radio

February 2023

Contractor Prequalification

STEP 1



BUILDINGCONNECTED

First time users, create a Building Connected account.

Returning users, make sure you are logged in before clicking Prequalify.

STEP 2



Open the "Qualifications" tab (rubber stamp symbol)

Navigate to the Awaiting Submission section and locate the questionnaire for: **"Tishman Construction Corporation"**

STEP 3



If you have any questions, email us at info@onejfk.com.

RESOURCES

For your reference, find session recordings and copies of past presentations with information regarding how to complete the prequalification application.

1. January 11, 2022 – "Understanding the Prequalification Process"
2. March 8, 2022 – "New Terminal One Insurance Requirements"
3. May 10, 2022 – "Preparing your Health and Safety Plan (HASP)"
4. June 14, 2022 – "Completing the Prequalification Application"

**** Note that AECOM is involved in more than one project at JFK Airport. There is a separate prequalification per development team.**

If you are interested in being considered for both projects, do not start the applications simultaneously.

Complete 1 first, then start the 2nd, to facilitate the seamless transition of information from one application to the next.

THE NEW TERMINAL ONE
JFK INTERNATIONAL AIRPORT

JFKR Advisory Council Meeting – 12/15/2022

Early Local Partners – Yolanda Sullivan-Hernandez Agency, Inc.



Yolanda Sullivan-Hernandez
Principal



Lawrence, NY

THE NEW TERMINAL ONE
JFK INTERNATIONAL AIRPORT

JFKR Advisory Council Meeting – 12/15/2022

Early Local Partners – Alleyne Consulting Group



Robert Alleyne
Principal
Alleyne Consulting Group

ALLEYNE CONSULTING GROUP, LLC

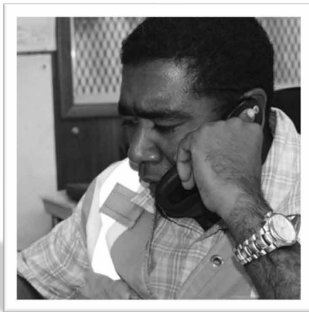
Jamaica, NY

- Alleyne Consulting Group, LLC provides management consulting & IT support services to commercial businesses
- Provided IT Design Services for Building 111, future NTO project management office at JFK
- Local certified MBE and SDVOB in Tier 1 priority zone

THE NEW TERMINAL ONE
JFK INTERNATIONAL AIRPORT

JFKR Advisory Council Meeting – 12/15/2022

Early Local Partners - JT Hicks Associates, LLC



John Hicks
Principal



Woodmere, NY

THE NEW TERMINAL ONE
JFK INTERNATIONAL AIRPORT

- JT Hicks Associates LLC has over 20 years of experience in mapping and surveying. With state-of-the-art equipment to match knowledge-base, experience and innovation, JT Hicks is a market leader in the modern-day mapping and surveying industry.
- Local certified MBE in Tier 1 priority zone
- Attended PANYNJ/JFK Redevelopment A&E Roundtable October 2018

JFKR Advisory Council Meeting – 12/15/2022

Local Business, M/WBE and SDVOB Outreach

- NTO-NY Tri-State Chapter of NAMC Virtual Event, Jul 12
- T1-T6 Meet the Primes Event, Jul 21
- M/W/LBE, SDVOB Information Session, Aug 9
Preparing A Successful Bid Submission
- NTO MWLBE/SDVOB Information Session, Sep 13
- ENR 2022 NYNJ Infrastructure Forum, Sep 16
- 2022 NYS MWBE Forum, Oct 6-7
- NTO - NYC Hispanic Chamber of Commerce Virtual Event, Oct 11
- Black Business Owners Forum 2022 Supernova Blueprint, Oct 13
- Meet the Primes Event, Oct 21
- Annual Competitive Edge Conference, Oct 31
- NY Women's Chamber of Commerce Networking Breakfast, Nov 3
- M/W/LBE, SDVOB Information Session, Nov 8
Estimating Tips and Tricks
- 2022 Veterans in Economic Transition Conference, Nov 29



- M/W/LBE, SDVOB Information Session, Dec 13
Design Services for FF&E Layouts

THE NEW TERMINAL ONE
JFK INTERNATIONAL AIRPORT

JFKR Advisory Council Meeting – 12/15/2022

Local Business, M/WBE and SDVOB Outreach

- NTO-NY Tri-State Chapter of NAMC Virtual Event, Jul 12
- T1-T6 Meet the Primes Event, Jul 21
- M/W/LBE, SDVOB Information Session, Aug 9
Preparing A Successful Bid Submission
- NTO MWLBE/SDVOB Information Session, Sep 13
- ENR 2022 NYNJ Infrastructure Forum, Sep 16
- 2022 NYS MWBE Forum, Oct 6-7
- NTO - NYC Hispanic Chamber of Commerce Virtual Event, Oct 11
- Black Business Owners Forum 2022 Supernova Blueprint, Oct 13
- Meet the Primes Event, Oct 21
- Annual Competitive Edge Conference, Oct 31
- NY Women's Chamber of Commerce Networking Breakfast, Nov 3
- M/W/LBE, SDVOB Information Session, Nov 8
Estimating Tips and Tricks
- 2022 Veterans in Economic Transition Conference, Nov 29



- M/W/LBE, SDVOB Information Session, Dec 13
Design Services for FF&E Layouts

THE NEW TERMINAL ONE
JFK INTERNATIONAL AIRPORT

JFKR Advisory Council Meeting – 12/15/2022

Community Investment

- NTO invests in the local community by:
 - Providing 29 flight school scholarships to August Martin H.S. in 2019
 - Supporting 70 organizations
 - Hosting a Holiday Suit Drive
 - Attending over 285 events including the:
 - ✓ 2022 Faithpreneur Conference
 - ✓ Unveiling of the Archie Spigner Park
 - ✓ Street Renaming for Darryl E. Greene
 - ✓ 5th Annual Sutphin Blvd Harvest Festival
 - ✓ Eric Garner Remembrance Gala
 - ✓ JFKR Faith Based Leadership Breakfast
 - ✓ JFKR Girls in Aviation Day
 - ✓ 100 Suits for 100 Men Annual Gala
 - ✓ Rockaway Development & Revitalization Corporation 35th Annual Awards Gala
 - ✓ The Family Legacy Foundation/ MCDC/ Sen. Leroy Comrie – Thanksgiving Turkey Distribution
 - ✓ Greater Jamaica Development Corporation 2022 Gala



THE NEW TERMINAL ONE
JFK INTERNATIONAL AIRPORT

JFKR Advisory Council Meeting – 12/15/2022

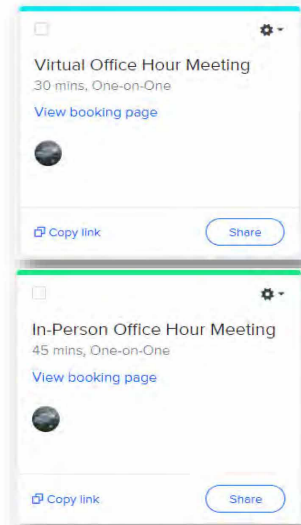
Stay Connected

Office Hours

- Visit us at <https://www.anewjfk.com/projects/the-new-terminal-one/>
- Register for 1-on-1 Meetings:
 - **Virtual:** Daily from 9:00am to 5:00pm
 - **In-Person at JFKR Community Information Center:** Wednesdays from 12:00pm to 5:00pm

2023 Upcoming Sessions

- M/W/LBE, SDVOB Information Session, January 10
- NTO-RDRC Local Workforce Event, January 18
- M/W/LBE, SDVOB Information Session, February 14
- Meet the Primes Event, February 23
- M/W/LBE, SDVOB Information Session, March 14
- Meet the Primes Event, March 30



THE NEW TERMINAL ONE
JFK INTERNATIONAL AIRPORT

JFKR Advisory Council Meeting – 12/15/2022

THE NEW TERMINAL ONE
JFK INTERNATIONAL AIRPORT

For more information visit us at:
www.anewjfk.com/projects/the-new-terminal-one

JFK

JFKR Advisory Council Meeting – 6/30/2022

Aeroterm JFK Development Project Status

- 350,000 square foot air cargo development with 3 accompanying Group VI aircraft ramp positions targeting LEED Silver in JFK's Cargo Area D
- 17 months into construction with an expected completion of Summer 2024
- Ground improvement installation is 80% complete. Building perimeter and interior footings are in progress and the exterior precast wall panels installation started
- 90" Sewer work is in progress to construct the last two diversion chambers where the new 90" pipe installation is approximately 80% complete. Work is in progress for the last phase of the work which will be the tie-in to the existing 90" sewer
- Developing a solar system on the roof of the facility will be a main priority moving into 2023
- Sustainable Design Includes electric charging stations for equipment, deicing pad for aircraft and a Material Handling System for improved warehouse handling.
- WFS already piloting a Cargo Community System (CCS) with Kale logistics that will improve warehouse efficiency which includes a more systematic handling of trucks into and out of the facility. (Truck management system part of the CCS)



March 2022



November 2022



Completed in Mid 2024



Current Bid Progress & Success Stories

Package	Package Title	Status	Bid Timing	Completion Status
1	Asbestos Abatement and Demolition	Awarded	2Q21	99%
2	Relocation of Sanitary Sewer	Awarded	4Q21	80%
3	Sitework	Awarded	1Q22	45%
4*	Building Construction	Awarded	1Q22	In Progress

Category	Type	Project Amount	Awarded Amount	MBE Participation	WBE Participation	LBE Participation
II	Design	\$8,427,770	\$8,222,530	10.9%	0.1%	0.0%
III	Construction	\$128,754,088	\$100,215,894	43.3%	10.5%	24.8%
Total	Design & Construction (Includes forecast for package 5)	\$137,181,858	\$108,438,424	20.0%	10.0%	3.0%

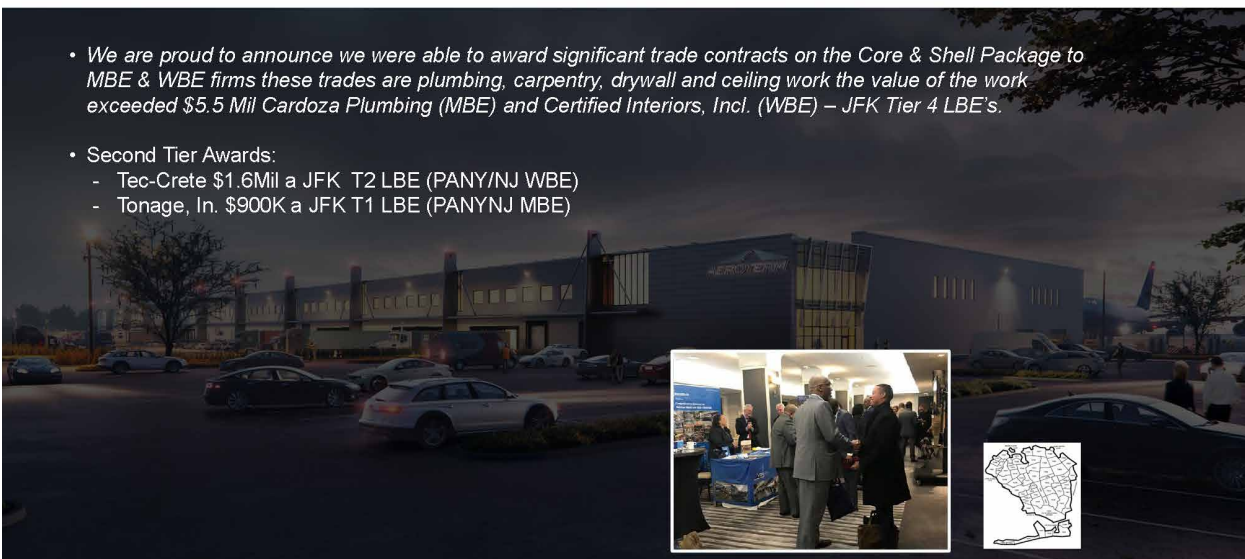
Total Awards to Date (October B2G report)	Total M/WBE Awards/Commitment to Date	MBE Contract Awards	WBE Contract Awards
\$108,438,424.42	\$54,826,034.52 (51%)	\$ 44,256,229.00 (41%)	\$ 10,569,805.52 (10%)

* Represents only awarded tasks



Success Stories

- We are proud to announce we were able to award significant trade contracts on the Core & Shell Package to MBE & WBE firms these trades are plumbing, carpentry, drywall and ceiling work the value of the work exceeded \$5.5 Mil Cardoza Plumbing (MBE) and Certified Interiors, Incl. (WBE) – JFK Tier 4 LBE's.
- Second Tier Awards:
 - Tec-Crete \$1.6Mil a JFK T2 LBE (PANY/NJ WBE)
 - Tonage, In. \$900K a JFK T1 LBE (PANYNJ MBE)



* Represents only awarded tasks



Success Stories

- On the DEP 90" Sewer Interceptor Package # 2 our storm drainage contractor C.A.C Industries a JFK T2 LBE awarded over \$4.8 Mil in contracts to the following MWBE firms:

11 Enviro Group	\$8,300 (PANY/NJ WBE)
American Pile and Foundation LLC	\$888,000 (PANY/NJ MBE)
En-Tech Corp.	\$1,606,440 (PANY/NJ WBE)
Miramax Engineering PC	\$57,550 (PANY/NJ MBE)
Our Rental Pumps, LLC	\$25,000 (PANY/NJ WBE)
Phantom Carting Inc.	\$890,288 (PANY/NJ MBE)
Rodbusters, Inc.	\$298,103 (PANY/NJ WBE)
Tri-State Groundwater Solutions LLC	\$1,070,391 (PANY/NJ MBE)



* Represents only awarded tasks



Upcoming Opportunities and How to Win Contracts

Package	Package Title	Status	Bid Timing	Tasks Involved
5	Tenant Improvements	Welcoming Bids in Near Future	1Q23	<ul style="list-style-type: none"> Carpentry Drywall Ceilings Office Doors Curtain Walls Office Partitions Interior Glazing Flooring & Carpet Plumbing Tilework HVAC – Ductwork Mechanical Work Millwork Painting Interior Electric Interior Signage Toilet Accessories, Mirrors, & Partitions Trash Compactor Water Services Fire Protection Import & Export Office Interior Warehouse Fencing

*Aeroterm's focus will be to generally promote diversity within diversity, improve WBE participation, while also aiming to engage SDVOB and LBE firms

Flowchart to Win the Contract

Potential union subcontractors are identified through outreach events, PANYNJ websites, and other forums

VRH Operations Assistant (OA) issues Contractor Prequalification Statement Forms to identified union subcontractors

When the OA receives the returned statements, they are reviewed for completeness

VRH CFO & COO review the statements and approve qualified subcontractors

The OA sends a vendor information form to potential suppliers/vendors. Once submitted, the vendor is entered into the VRH database

If you would like the opportunity to be included in the bid list, please send a request to aerotermoutreach@vrhcorp.com



Community Outreach and Engagement

Subcontractor Outreach Events

- The third outreach event was held on November 29th to advertise the tenant improvement package which will include tenant improvements, interior finishes and mezzanine level offices.
- Office Hours: VRH has conducted 60+ office hours since Subcontractor Outreach Event #2
 - Subcontractor Outreach Event #1 (September 14, 2021)
 - Focused on the demolition and abatement bid package
 - 96 subcontractors registered and 64 attended
 - Subcontractor Outreach Event #2 (November 30, 2021)
 - Focused on the sitework and building shell bid packages
 - 150 subcontractors registered and 47 attended
 - Subcontractor Outreach Event #3 (November 29, 2022)
 - Focused on the Interior Finishes and fit-out of the Ground Floor and Mezzanine Level bid packages
 - 126 Invitees expressed interest
 - 20 sub/vendor companies registered 16 attended
 - VRH sent 329 Contractor Prequals to potential subcontractors received 8 to date
- Aeroterm and VRH will be conducting 30 minute one on one office hours every Wednesday in December 2022.
- Planning another outreach session in 1Q23

December 2022 • Issue 6

Development of the Realterm Cargo Facility at JFK International Airport is underway! The completely new \$152 million, 350,000 sq. ft. facility, combining warehouse and office space, is going up in Cargo Area D, adjacent to North Boundary Road. JFK's first new air cargo facility in nearly 30 years, Realterm's project will provide greater efficiency in handling and storing cargo and will enhance the link between the greater JFK-Queens community and the global supply chain.



March 2020-November 2022 Highlights

RCC provided Career Assessments to more than 4,500 Candidates

3,679

Candidates
Referred

630

Individuals Placed
at JFK Airport

360

Queens
Residents

CAO Community

74

Community
Information
Sessions



8

Job Fairs
Hosted



12

Customer Service &
Financial Literacy
Training Cohorts



66

Job Fairs
Attended



104



RCC Dashboard

<u>KPI</u>	<u>2020</u>	<u>2021</u>	<u>Jan.- Nov. 2022</u>	<u>Total</u>
Customers Served	1758	1540	1289	4587
Unique Referrals	883	960	1836	3679
JFK Airport Placements	88	231	311	630
Queens Residents	51	154	155	360
Target Zip Placements	42	123	138	303

JFK AIRPORT JOB FAIR NOVEMBER 30, 2022

Job Fair Highlights:

- ☐ Over 2,100 Registered for the Event. Over 1,100 candidates attended.
- ☐ More than 45 Airport Employers attended the fair.
- ☐ Positions available included: Customer Service, Flight Attendants, Food Service, Ramp Agents, Operations, Retail, Drivers, Aircraft Maintenance
- ☐ CAO conducted on-site orientations.

JFK AIRPORT JOB FAIR

PARTICIPATING EMPLOYERS:

- JFK International Air Terminal LLC
- Duty Free Services
- Global Security Consulting Group
- Alliance Ground International
- ASMO
- OTG Management
- DA & CI
- DHQ Linx Worldwide Inc.
- Inter-Con Security
- JarBlue
- Safetec LLC
- AISTEM Connections
- American Airlines
- Delta Air Lines
- And many more!

Please bring your resume and wear professional attire. Thank you for your partnership!

WEDNESDAY 11/30/22 10AM-2PM

JFK International Airport
JFK Building 6
Maintenance Garage
Queens, NY 11430

REGISTER:
Scan the QR code

or visit: <https://www.jfkairport.com>

IN COOPERATION WITH:



106



JFK AIRPORT JOB FAIR

NOVEMBER 30, 2022

More than a thousand employment seekers flock to JFK Airport job fair

By Bill Parry

commented Posted on December 5, 2022



More than a thousand job seekers flood a maintenance building at JFK Airport as 45 companies were looking for new employees for hundreds of open positions. (Photo courtesy of Port Authority)



107



Current Employment Opportunities:

- Passenger Service Agents
- Office Agents
- Operations Supervisor
- Project Engineer
- Warehouse
- Ramp Agents
- Security Guards
- Cashiers
- Food Service
- Drivers and Dispatchers

Upcoming Events:

On-site Recruitment at the JFK Career Center, Building 141

- DGS, Security Cart Screeners- Every Wednesday
- Eulen, Baggage Handler & Wheel Chair Attendants- Jan. 10th and 12th
- Sodexo, Food Service: Every Monday & Tuesday

JFKR Aviation STEM Program

Updated Timeline

4-Saturday Program

- December 2022/January 2023
 - Finalize MOU and Establish Funding Mechanism
- January 2023
 - Set up Program Website
 - Begin Advertising
- February 2023
 - Recruit Teachers and Group Leaders
- March 2023
 - Accept and Review Applications
 - Select Participants
- April 2023
 - Run Program (4/22, 4/29, 5/6, 5/13)



111



The Institute of Concessions (IOC)

Mission: To provide diverse and local businesses a gateway to successfully operate a concessions business in an airport, in-terminal setting. Food & Beverage and Retail revenue opportunities complemented by employment, purchasing, and spending will have a substantial economic impact centered in Southeast Queens.

Strategy: Deliver IOC through education and capacity building.

Tactic: Three (3) prong approach delivered over 3-months: learn, practice and live.

Learn	Practice	Live
<ul style="list-style-type: none">Target businesses that successfully operate on the street in the Food & Beverage (F&B) and Retail sectors.Industry experts teach 13 competencies identified by Academies of Sciences as necessary to operate a concession, successfully.Two keynote panels to address the pandemic and lessons learned, and financial resources available.	<ul style="list-style-type: none">Participants of IOC will be placed in a team and asked to present their responses to mock competitive solicitations.Presentations to be delivered verbally (i.e., Capstone) as well as written to a distinct panel.Panelist to be represented by PANYNJ, and Concessions Operators/Developers.	<ul style="list-style-type: none">Graduates of IOC to be selected for apprenticeships/internships with airport leading operators of F&B and Retail (i.e., SSP, Hudson, etc.)Establish mentor protégé between existing airport businesses and graduates to facilitate experience and exposure to airport, in-terminal environment.

113

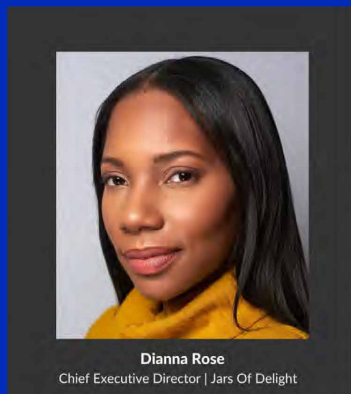
IOC Program Coordinator Awardee

The Scope of Services & Responsibilities include:

- Develop the program for multiple cohorts and centered on airport concessions
- Coordinate all pre-defined, and inform new elements that will result in successful delivery of the IOC
- Implement the necessary technologies, printed materials, and other resources to manifest the IOC program plan
- Serve as the liaison between PANYNJ, JFKR, instructors, airport stakeholders, and the community
- Develop, quality control, administer all related program and project management tasks
- Support instructors with technical assistance
- Host Q&A sessions before and after each module
- Coordinate work efforts and contribute effectively to teamwork
- Perform other duties, as assigned

114

Dianna Rose, Chief Executive Director Jars of Delight



Dianna Rose
Chief Executive Director | Jars Of Delight

JARS
OF DELIGHT

Jars Of Delight (JOD) was founded by Dianna Rose in 2017 and is New York City's first M/WBE-certified zero-waste food company providing unique mason jar meals to corporate clients. Prior to and after launching JOD, Dianna has held positions in operations, leadership, and management with several companies, most notably JetBlue Airways- as a JFK Operations Control Coordinator, CHAE Corp, and as the Founder of the Essential Kitchen located within the GateWay JFK BID and has dedicated her work to support local businesses within the Southeast Queens Community.

Airport Concessions Disadvantaged Business Enterprise (ACDBE)

Definition: An Airport Concessions Disadvantaged Business Enterprise is a for-profit business entity located in an airport engaged in selling consumer goods or services to the public.

Eligibility Criteria for Certification:

- 51% owned by individuals or individuals categorized as economically or socially disadvantaged citizens or permanent residents.
- Domiciled at the airport or provide a service to the customers and concessionaires at the airport.
- Has size standards for program, industry, and Personal Net Worth (PNW).
- Site visits required.
- Applicant assigns its own North American Industry Classification System (NAICS) code(s).
- 90 days is given to complete a new application with a grace period of 60 days.
- The application is available at the agency portal: <https://panynj.diversitysoftware.com/>
- Contact the certification hotline at 212-435-7888 or email certhelp@panynj.gov

116



JFKR Community Information Center Outreach Tracking Data

# of Outreach Office Visits (Jan – Nov 2022)	• 700+ Office Visits
# of Event Attendees (Jan – Nov 2022)	• 2,749 Event Attendees
# of CAO Job Referrals (Jan – Nov 2022)	• 164 Referrals
# of Certification Meetings (Jan – Nov 2022)	• 43 Certification Meetings
# of Event Form Request (Jan – Nov 2022)	• 10 Event Form Request

118



JFKR Community Information Center Jan. – Dec. (YTD) 2022 Event Data

# of Outreach Internal Events	• 30+ Internal Events
# of MWBE/ACDBE Certifications Info Sessions	• 7 MWBE/ACDBE Certification Events
# of External Events	• 80+ External Events
# of Certification Meetings	• 9 MWBE/ACDBE
# of Events Attended	• 110+ Event Attended

119



L/M/WBE Business Utilization 2022

FOOD/CATERING	GRAPHICS/PRINTING	LOCATIONS	TRANSPORTATION	VIDEOGRAPHY PHOTOGRAPHY
Pizza Port, 11420	Burhani Signs & Graphics, 11413	Black Spectrum Theatre, 11434	CheeseBusTrips, 11432	Nat Valentine Photography, 11423
Star Mountain JFK Inc., 11430	Party Moments, 11435	Rochdale Village, 11434		Ramed Studios, 11433
Nana's Love LLC, 11434				Granted Group Production, LLC, 11411
Infused with Love BBQ Catering, 11412				
Paul Michael's Brick Oven Pizza, 11419				
Black Owned Subways, 11434				
Simply The Best Catering				
Oh Sweet Mason				
Boozee Bar				
Bella Luna's				

of L/M/WBE
Businesses Used
(Jan – Dec 2022)

• 18 L/M/WBE Businesses

120



2022 Summer Internship & SYEP

Summer Internship:

- Two college students from Tier 1 were selected to work with the Outreach office and Compliance team.
- Tasks included research & data collection, external communications, compliance data/recommendations, and more.



Brianna Moxam
Spelman College '24
Laurelton, NY



Najai Grange
Johnson C. Smith University '24
Cambria Heights, NY

Summer Youth Employment Program:

- Two SYEP placements from Tier 1.
- Placements from Laguardia Community College & Child Center of NY (August Martin HS)
- Jobs Include Events Coordination, Media & Communications, general Office Assistance & Data Entry



Logan Smith
Jamaica High School '24
Jamaica, NY



Marzia
August Martin High School '23
Jamaica, NY

122



JFKR Sustainability Mini Summer Camp: 2022

The JFK Redevelopment Community Outreach Team in partnership with the JFK General Manager's Office, PA Office of Sustainability, Idlewild Science Learning Center and Jamaica Bay Rockaway Parks Conservancy hosted a free 5-day mini-camp about sustainability.

- 30 local students from Southeast Queens participated
- Topics covered include climate change, the greenhouse effect, the carbon effect, the carbon cycle, renewable energy, conservation & resource management, aviation suitability and flight
- Trip Days: Idlewild Science Learning Center & special airside tour of JFK Airport.
- Local vendors provided breakfast and lunch, including Infused with Love Catering and Nana's Love LLC
- Mini Camp anticipated to return Summer 2023.



123



JFKR Girls in Aviation Day 2022

Introduced girls in grades 1 – 12 to the aviation industry. Girls in grades 1-12 had the opportunity to learn from and be inspired by professional women in aviation, including pilots, mechanics, flight crew, and many more through breakout sessions and hands-on learning experiences.

50 local girls from Southeast Queens, Far Rockaway, Western Nassau County.

Partners: JFK General Manager's Office, Women in Aviation International, The New Terminal One, JFK Millennium Partners, Delta, JFKIAT, JetBlue, American Airlines, Federal Aviation Administration, Aviation High School, CUNY York College, Vaughn College, Cradle of Aviation, Port Pizza, and Burhani Graphics

JFKR GIA anticipated to return October 2023



124



Outreach Events June - August

Community Events

- 2022 Hallmark Aviation Job Training
- Queens Chamber of Commerce Business Expo 2022
- Far Rockaway Career Fair @ Challenge Charter
- LGA Small Business & Government Matchmaking Event
- Juneteenth in Queens
- Queens District 28th Career Fair
- CAO Aviation Job Fair
- Ribbon Cutting Ceremony Greater Nexus – Co-Working Space
- Queens Chamber of Commerce Summer Networking Cruise
- PANYNJ JFK Roadways, Utilities, Ground Transportation Center – MWBE, SDVOB & LBE Info Session & Networking Event
- JFK Terminal 1 & 6 Info Session @ Russo's on the Bay
- Life Camp Community Brunch
- National Night Out
- BP Richards Borough Hall on Your Block Job Fair
- JFK Rotary Ladies Golf & Spa Day
- Vine Baptist Church Community Day



Monthly Business Development Events

- MWBE 101 Certification Event
- ACDBE Certification Event

125



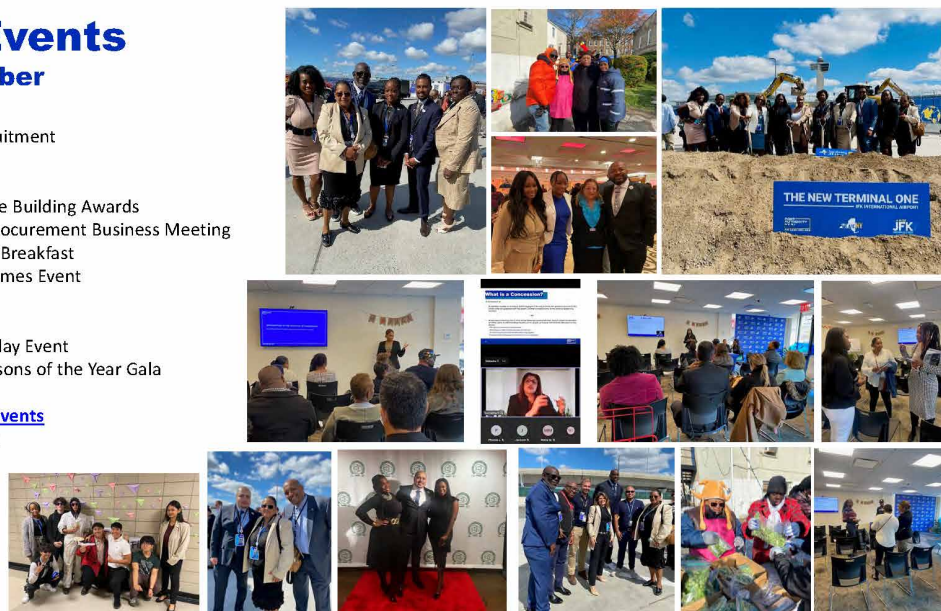
Outreach Events September - December

Community Events

- CAO Hospitality Training/Recruitment
- JFKR Faith Based Breakfast
- 100 Suits Gala
- Queens Chamber of Commerce Building Awards
- City & State: Government & Procurement Business Meeting
- CUNY York College Leadership Breakfast
- AECOM Tishman: Meet the Primes Event
- Competitive Edge Conference
- ABM Job Fair
- Aviation H.S. Girls in Aviation day Event
- Queens Chamber Businesspersons of the Year Gala

Monthly Business Development Events

- MWBE 101 Certification Event
- ACDBE Certification Event



126



Updated Outreach Office Hours

144-33 & 35 Jamaica Avenue | Jamaica, NY

- The JFK Redevelopment Community Information Center is open three days a week.
- In-person assistance is available Tuesdays, Wednesdays, and Thursdays, from 9am-5pm.
- Please visit www.anewjfk.com to schedule an appointment with the MWBE Consultants, and Terminal Developers.



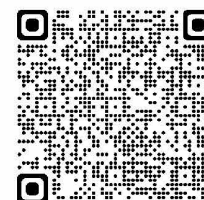
127

A NEW
JFK
REDEVELOPMENT

**PORT
AUTHORITY
NY NJ**
AIR LAND RAIL SEA

Event Space Reservation

- If you are looking for a space to host an event, the JFKR Community Information Center is available.
- Please fill out the JFKR Event Space Reservation Form:
<https://www.anewjfk.com/community-events-public-calendar/>



128

A NEW
JFK
REDEVELOPMENT

**PORT
AUTHORITY
NY NJ**
AIR LAND RAIL SEA

JFK Redevelopment Outreach Contact Directory

The JFK Redevelopment Outreach Contact Directory includes the contact information for the following

- JFK Redevelopment Outreach Team
- M/WBE Compliance Consultants
- Terminal Developers
- JFK Cargo Facility Aeroterm Project

**PORT
AUTHORITY
NY NJ**
AIR LAND RAIL SEA

A NEW
JFK
REDEVELOPMENT
TAKING OFF NOW



SCAN HERE TO ACCESS THE
JFK REDEVELOPMENT
CONTACT DIRECTORY

129

A NEW
JFK
REDEVELOPMENT

**PORT
AUTHORITY
NY NJ**
AIR LAND RAIL SEA

JFK Redevelopment Outreach Team



**PORT
AUTHORITY
NY NJ**
AIR LAND RAIL SEA

**A NEW
JFK**
REDEVELOPMENT

Address	144 - 33 Jamaica Avenue Jamaica, NY 11435
Phone Number	718.244.3834
Email Address	jfkredemption@panynj.gov
Website	www.anewjfk.com
Hours of Operation	Tuesdays, Wednesdays & Thursdays 9AM – 5PM Virtually Mondays & Fridays 9AM – 5PM
Manager of External Affairs & Community Outreach	Rachelle Antoine, raantoine@panynj.gov 718.244.3828
Office Manager	Bridgitte Allen, brallen@panynj.gov 718.244.3834
Operational Outreach Leader	Natasha Turner, nturner@panynj.gov 718.244.3831
Certification Analyst	Gloria Wigfall, gwigfall@panynj.gov 201.395.3949 Office Hours: Every Thursday 9AM – 4PM

**PORT
AUTHORITY
NY NJ**

Q&A Thank You!

**A NEW
JFK**
REDEVELOPMENT

AIR LAND RAIL SEA

Community Question: How do we get contracts to Minority contractors who are not having success with utilizing the portals successfully.

Answer: Terminal Developers are present to make connections and schedule appointments with businesses to walk through the portals successfully.

Community Question: Re: The Cargo area, while 50 ft trucks can enter JFK legally from the VanWyck Expressway, how do we ensure they don't drive through residential areas?

Answer: Aeroterm only handles on airport cargo management. Outreach should be made to NYC DOT, 311 or Elected Officials to ensure truck drivers are following the rules of the road because the PANYNJ has no jurisdiction on local streets.

Community Question: Trucking warehouses that support the airport are in the community. Can there be incentives to have these warehouses relocated?

Answer: Current facilities on airport are at capacity so there are plans to create more facilities in the future. Councilwoman Selvena Brooks Powers has convened a special Task Force to address these challenges around the entire Borough.

Community Question: What is the estimated dollar / economic activity amount this JFK Development is supposed to generate?

Answer: The total dollar amount is still be calculated as the total dollar amount will include those who win contracts, proposals from the committees that get funded in addition the all the construction. With a world class airport, we need a world class opportunity for the residents that goes past the conclusion of the project and ensures our community, our children, our businesses and our environment are better as a result of this legacy work.