

JFK International Airport The New Terminal One

M/W/LBE Information Session

April 13, 2021



Redevelopment of JFK Terminal One



9 Widebody Gates / **1** Narrowbody Gate

0.7 million square foot building

45 acres (current T1 site)

All-International traffic



THE NEW TERMINAL ONE JFK INTERNATIONAL AIRPORT

22 Widebody Gates / **1** Narrowbody Gate

2.7 million square foot building

144 acres (current T1, T2 and former T3 sites)

All-International traffic



Commitment to Diversity

Diversity efforts start with The New Terminal One's Leadership:

- **Dr. Gerrard P. Bushell**, Executive Chair of The New Terminal One and Chair of Carlyle Airport Group Holdings, is a leader with experience in government, labor and the private sector. Dr. Bushell served as the President and CEO of the Dormitory Authority of the State of NY (DASNY) where he deployed more than \$38 billion of capital and financing and managed a construction portfolio valued at over \$6 billion in construction projects all while advancing the State's M/WBE goals beyond 30% for DASNY.
- **JLC Infrastructure** is a 30% equity partner. JLC Infrastructure is a leading investment firm with a strong track record and presence in NY and is a registered MBE with the PANYNJ. JLC's participation since the inception of the project has helped to drive the commitment to fostering diversity.
- **McKissack & McKissack**, the oldest woman and minority-owned design and construction firm in the US, is leading the Project Management Office. Cheryl McKissack Daniel, its President and CEO, is actively engaged with The New Terminal One as an advisor. McKissack has a formidable track record of delivering projects that meet and often exceed MWBE goals. Its portfolio of projects includes: World Trade Center, Columbia University, Metropolitan Transportation Authority (as Independent Engineering Consultant for 8 years), Philadelphia International Airport and LaGuardia Airport.



The New Terminal One Commitment

Reaffirming Our Commitments

- **30% M/WBE goal (20% MBE, 10% WBE)** across all phases and disciplines of the project
- Driving New York State's nation leading **M/WBE participation for the project beyond \$1 billion**
- **Hiring goals for minorities (40% for laborers, 30% for other trades and 7% for women)**
- **Prioritization of local firms** starting with SE Queens and Western Nassau, followed by Borough of Queens and NY/NJ Port District

Dear Partners:

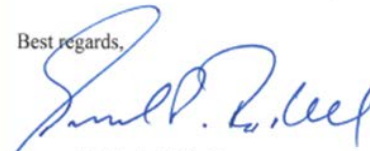
We are delivering one of the most important infrastructure projects across the globe at The New Terminal One at JFK International Airport. We are proud to partner with the Port Authority of New York and New Jersey and execute on Governor Cuomo's vision of a world-class airport. To that end, we are committed to driving innovation, excellence, and diversity and inclusion.

One of the most important themes central to our designation as the developer and operator of The New Terminal One is our commitment to "Diversity and Inclusion." We are building a business where our DNA reflects the importance of building partnerships embracing and reflecting the diversity of the JFK-area community, New York City, and the State of New York.

We require our partners to create opportunities for Minority- and Women-Owned-Business Enterprises (MWBE) and Local Business Enterprises (LBE). We expect our engagements to present plans and benchmarks to meet and exceed the 30% MWBE goals. Our procurements are designed to deliver best-in-class services and commodities. We are also looking for our partners to be strategic and innovative in how they work with MWBE and LBE firms to build capacity, grow, and employ a diverse workforce. This expectation extends to all segments of our project: finance, design and construction, operations, and commercial activity. These commitments permeate everything we do as we drive innovation and performance at The New Terminal One at JFK and deliver a world-class terminal.

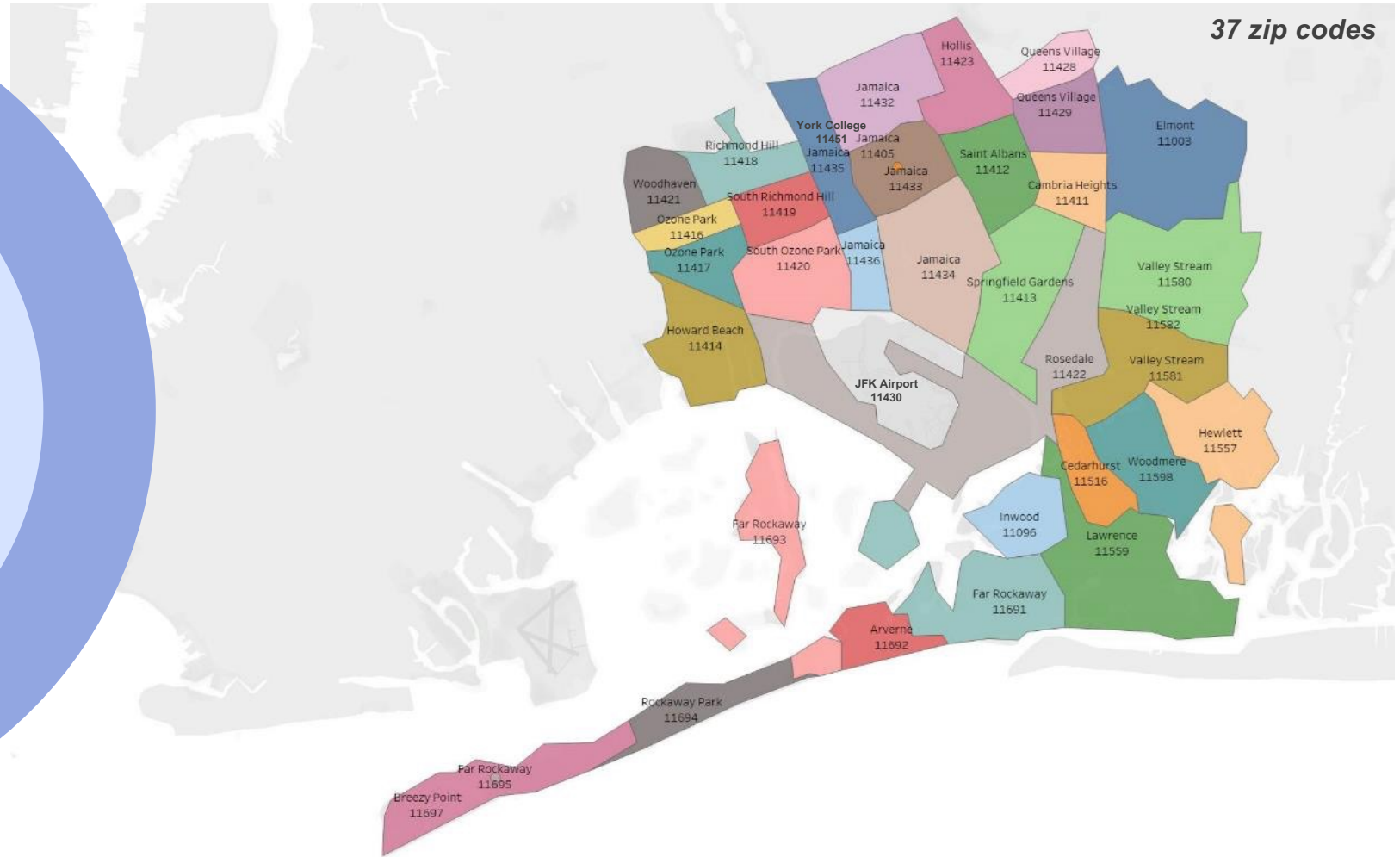
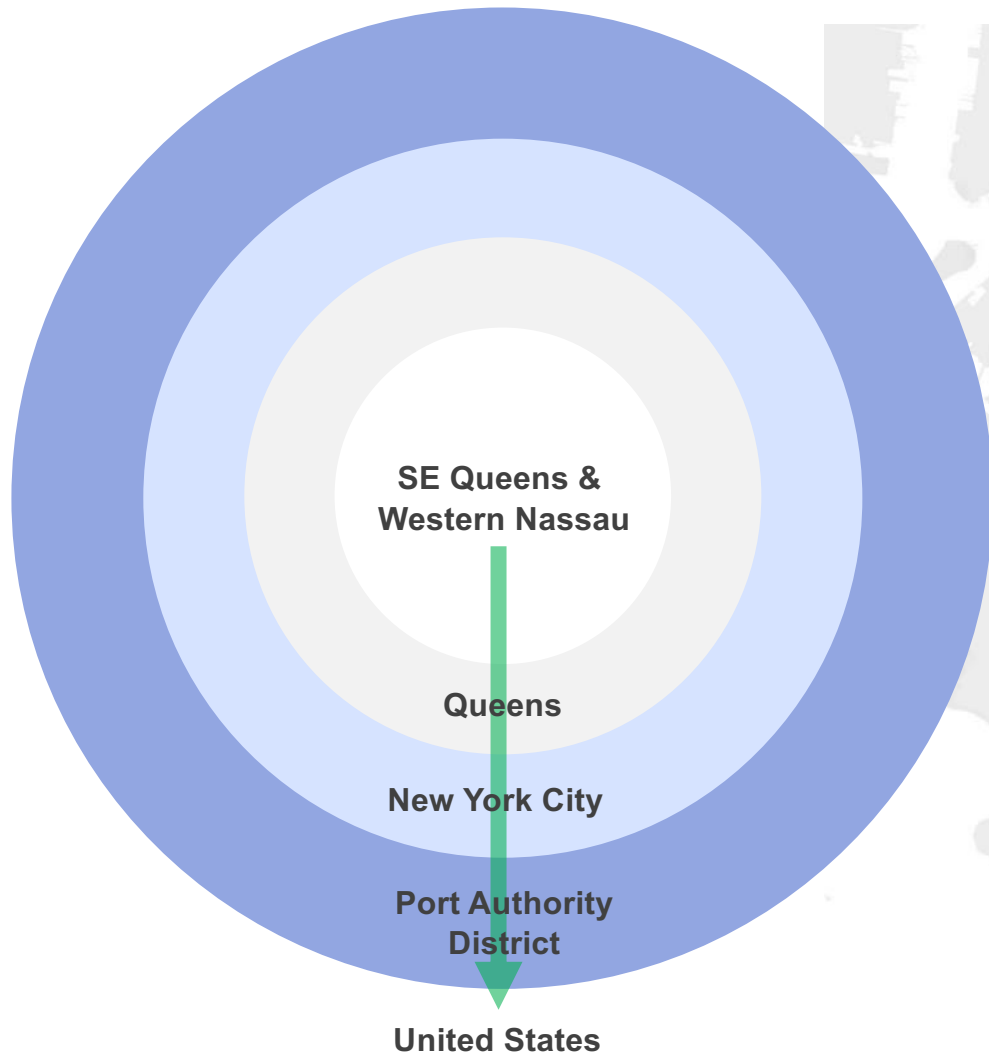
We demand your best thinking and expect you to deliver exceptional results. Our team, including Kim Hardy, Director, MWBE Participation, at khardy@onejfk.com or (917) 405-0526, will engage with you throughout the project. We look forward to working closely with you to achieve these goals.

Best regards,



Gerrard P. Bushell, Ph.D.

Local Prioritization for New Opportunities



Creating Opportunities for the Community & Region

Jobs



5,000+ local construction jobs
10,000+ permanent jobs with continuity from the current Terminal One

Local



Creating opportunities for local firms and residents
Prioritizing 35 local zip codes, Queens and NY/NJ

MWBE



30% MWBE participation goal across all disciplines and phases including at the Financial Sponsor level and professional services

Labor

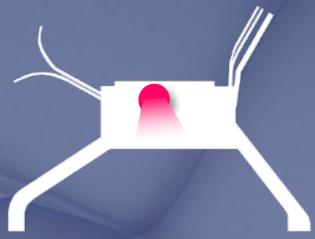


Project Labor Agreement with leading MWBE/local provisions
Building Trades investing through Ullico as a Financial Sponsor

Community Involvement

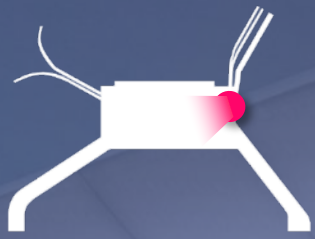


Initiatives on education, workforce, environmental and business development
JFK Airport Academy to upskill local workforce



Departures Hall

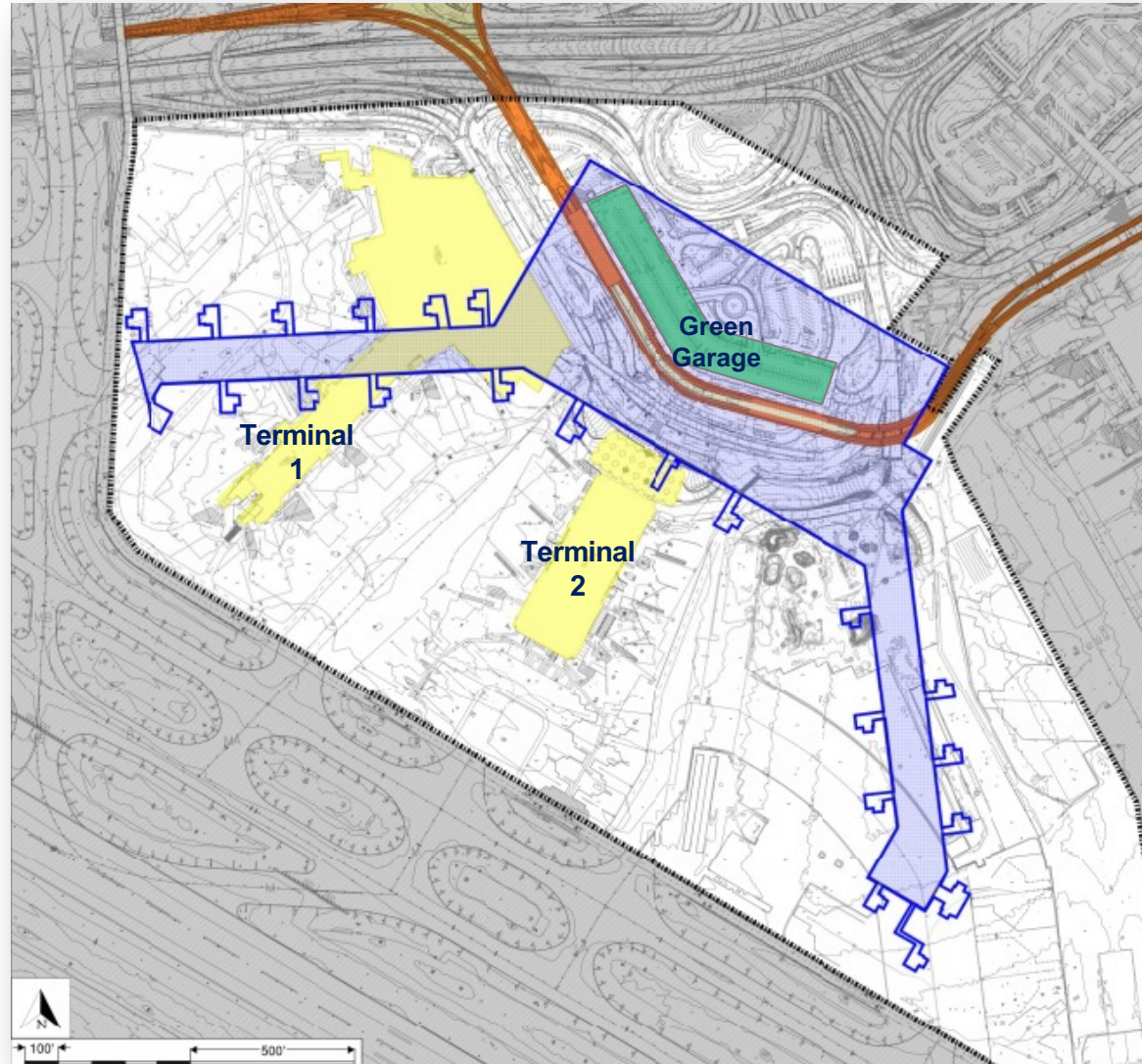




Commercial Zone



Project - Overview



Project - Overview

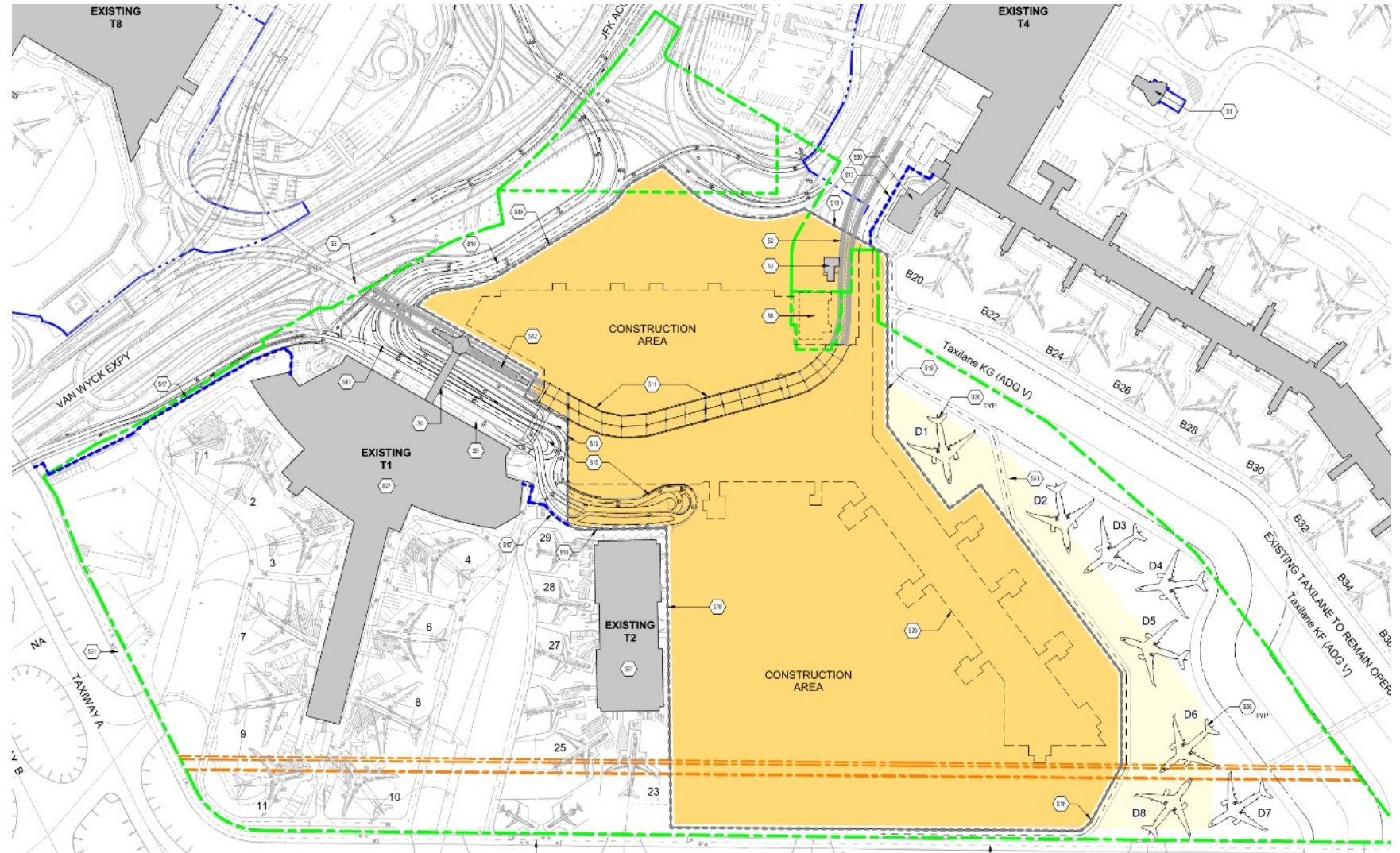
Phase A0 (3 Months): Site Capture, Demo

Phase A (44 Months)

- A0 (3 Months)
- A1/A2 (41 Months)

Phase B (40 Months)

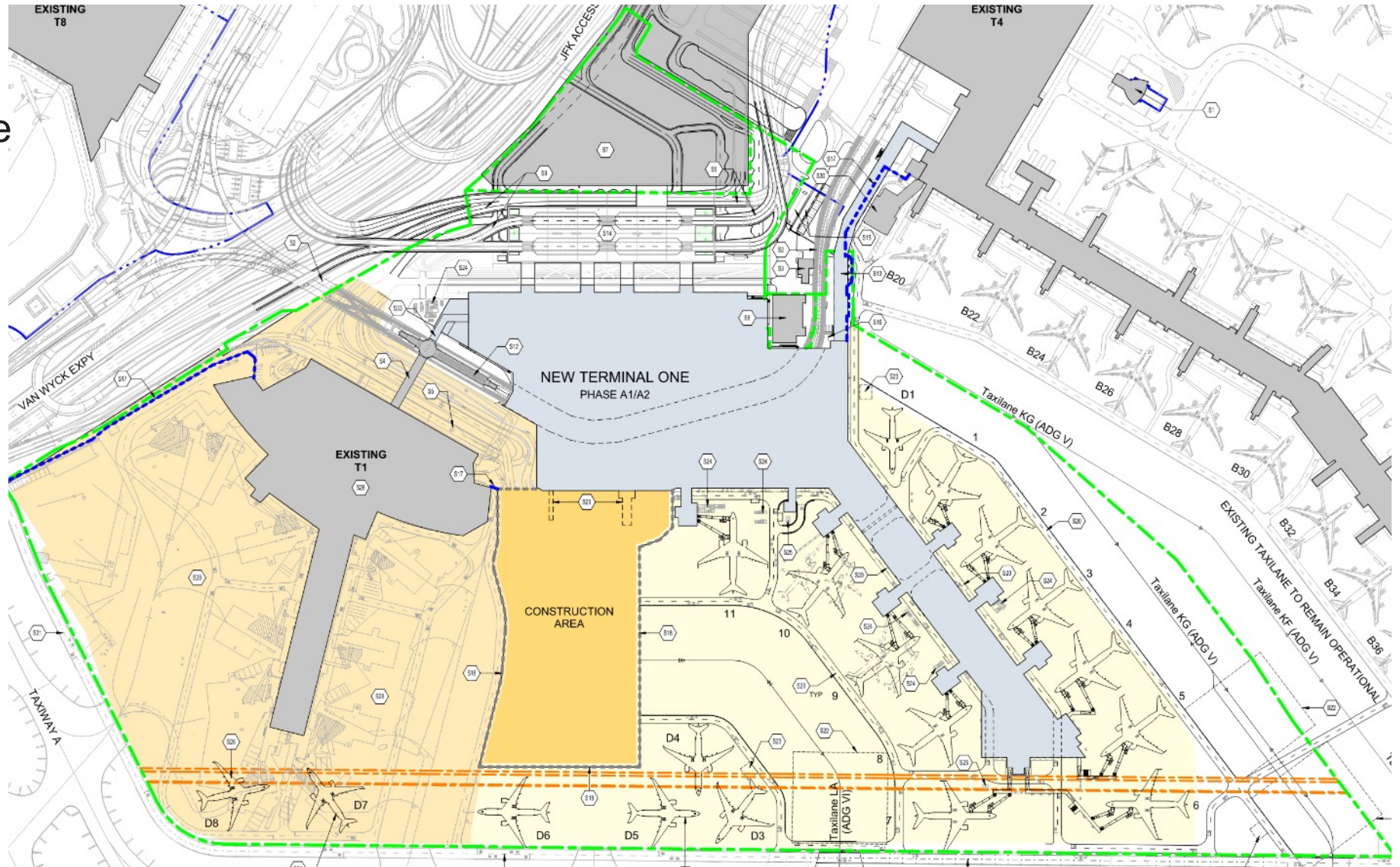
- B0 (4 Months) *concurrent
- B1 (22 Months)
- B2 (18 Months)



Project - Overview

Phase A1/2/3 (41 Months)

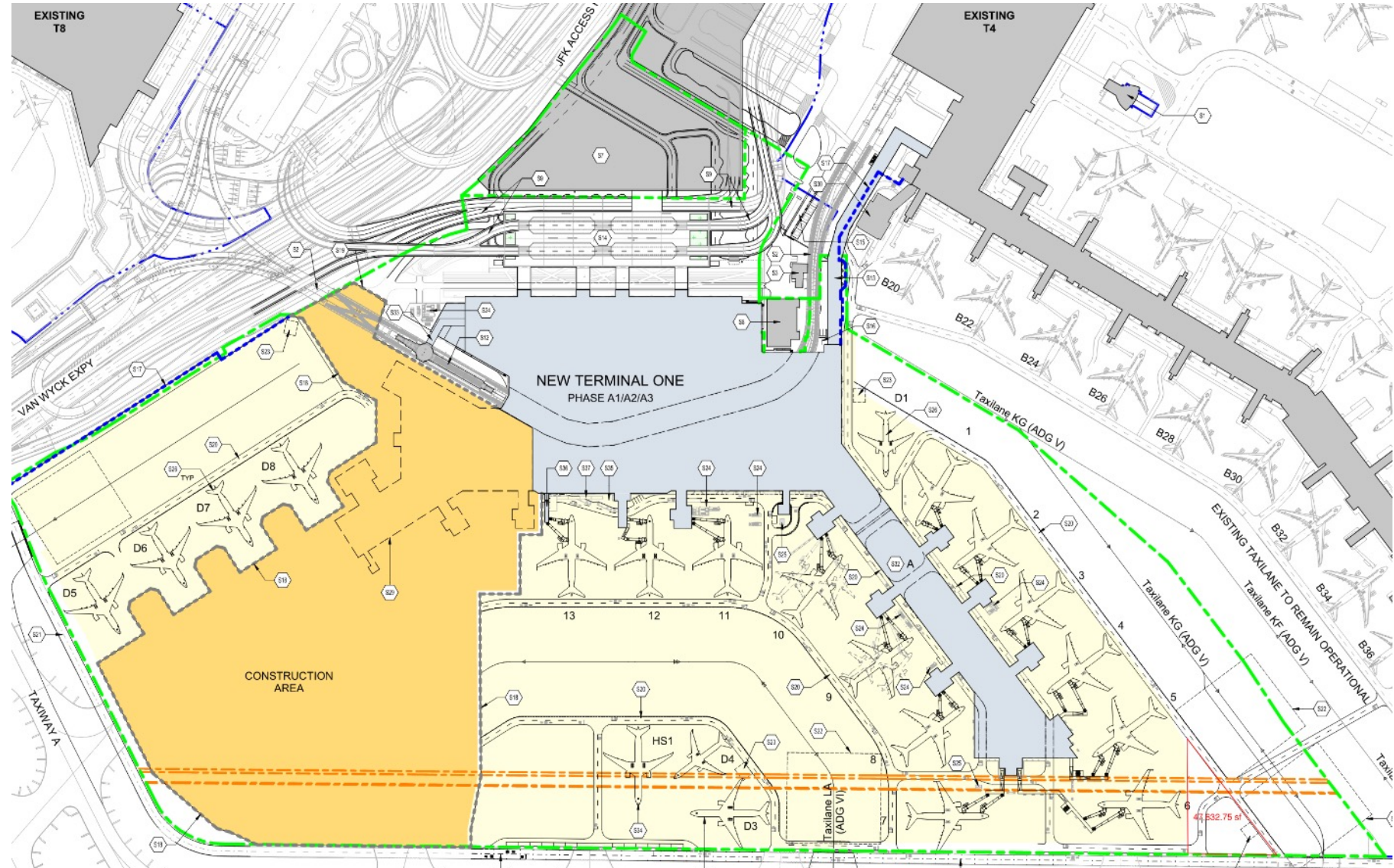
- Construct Head House and East Pier (11 gates)
- Phase A3 – Demo T2, construct 2 gates



Project - Overview

Phase B0 (4 Months)

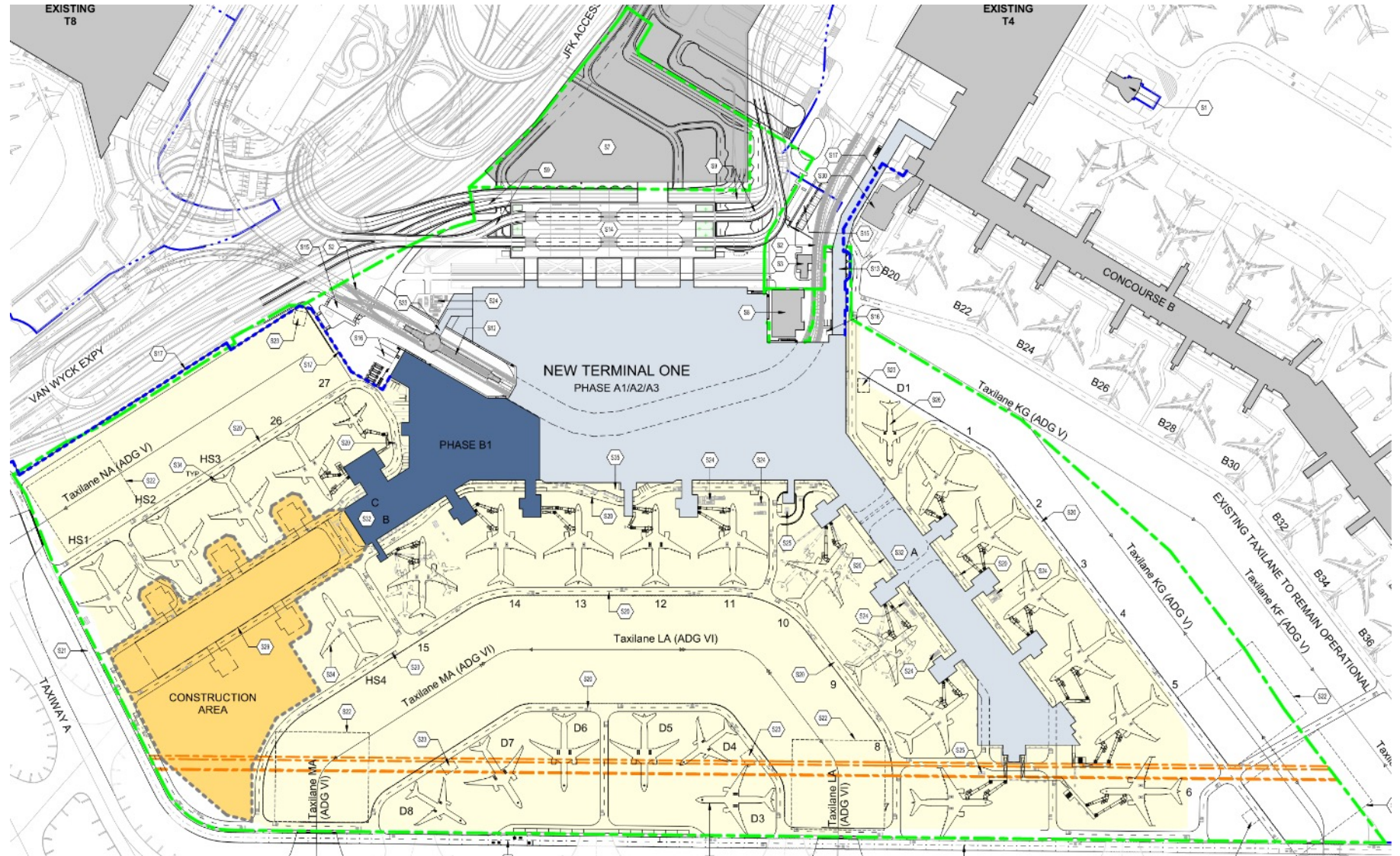
- Site Capture
- Demo Old T1



Project - Overview

Phase B1 (22 Months)

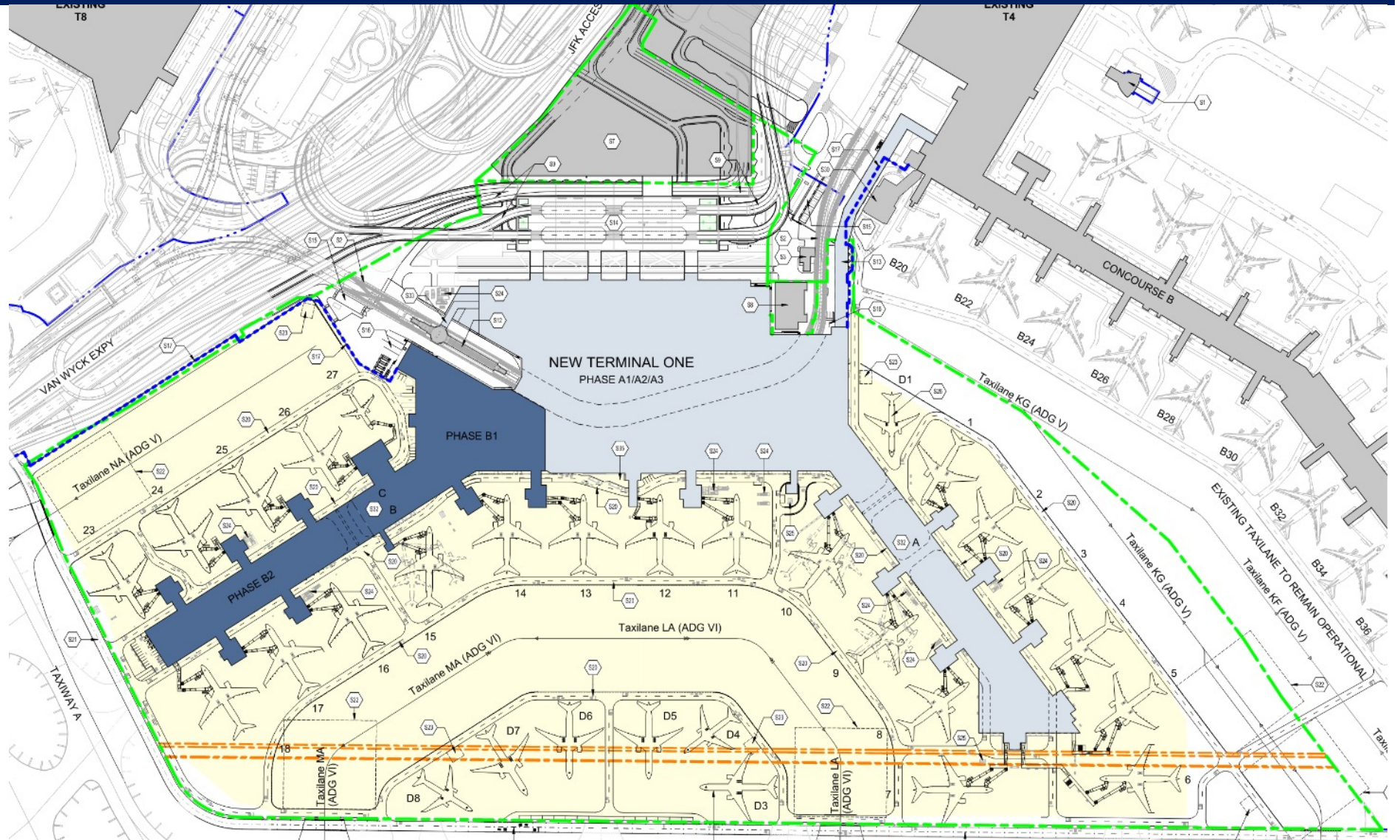
- Concurrent with Phase B0, construct remaining head house
- Half of West Pier (5 gates)



Project - Overview

Phase B2 (18 Months)

- Construct remaining West Pier (5 gates)



Stay Connected with The New Terminal One

Visit us at:

www.anewjfk.com

[Click here for important information regarding COVID-19 \(Novel Coronavirus\)](#)

PORT
AUTHORITY
NY NJ
L
AIR LAND RAIL SEA



Travelers

NY STATE - TRANSFORMING JFK



[TERMINAL PROJECTS](#) [WORK WITH US](#) [MEDIA](#) [PUBLIC OUTREACH](#) [CONTACT US](#) [Q](#)



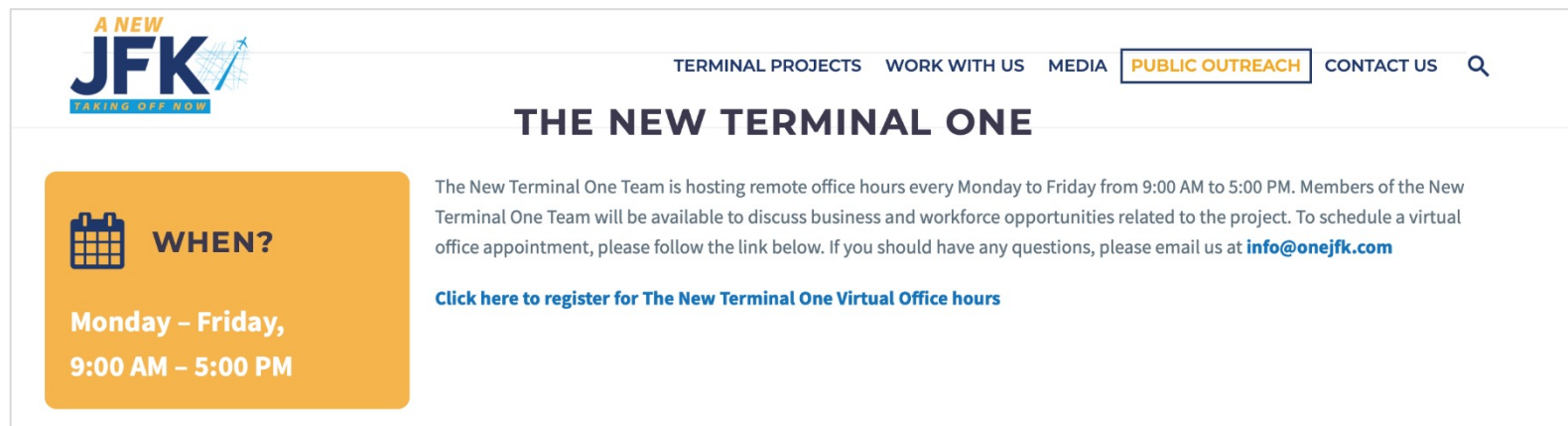
THE NEW TERMINAL ONE
JFK INTERNATIONAL AIRPORT

Stay Connected with The New Terminal One

Visit us at

www.anewjfk.com

*Follow Virtual Partner
Outreach Days*



The screenshot shows the website's navigation menu with 'PUBLIC OUTREACH' highlighted. The main heading is 'THE NEW TERMINAL ONE'. Below this, there is a section titled 'WHEN?' with a calendar icon, stating 'Monday - Friday, 9:00 AM - 5:00 PM'. To the right, a paragraph explains that the team hosts remote office hours from 9:00 AM to 5:00 PM, Monday to Friday, and provides an email address info@onejfk.com for scheduling. A link is provided to register for the virtual office hours.

A NEW JFK
TAKING OFF NOW

TERMINAL PROJECTS WORK WITH US MEDIA **PUBLIC OUTREACH** CONTACT US

THE NEW TERMINAL ONE

WHEN?

Monday - Friday,
9:00 AM - 5:00 PM

The New Terminal One Team is hosting remote office hours every Monday to Friday from 9:00 AM to 5:00 PM. Members of the New Terminal One Team will be available to discuss business and workforce opportunities related to the project. To schedule a virtual office appointment, please follow the link below. If you should have any questions, please email us at info@onejfk.com


[Click here to register for The New Terminal One Virtual Office hours](#)

Stay Connected with The New Terminal One

Visit us at
www.anewjfk.com


Follow Virtual Partner
Outreach Days


Schedule a Virtual Meeting via
our online portal.

 **THE NEW TERMINAL ONE**
JFK INTERNATIONAL AIRPORT

The New Terminal One at JFK International Airport


New Terminal One Virtual Office Hours

 45 min

 Web conferencing details provided upon confirmation.

The New Terminal One Team is hosting Virtual Office hours, Monday through Friday from 9:00am to 5:00pm.


Members of the New Terminal One Team will be available to discuss opportunities for your business to participate in the iconic redevelopment project at JFK International Airport.

 Troubleshoot

Select a Date & Time

April 2021 < > Wednesday, April 14

SUN	MON	TUE	WED	THU	FRI	SAT
				1	2	3
4	5	6	7	8	9	10
11	12	13	14	15	16	17
18	19	20	21	22	23	24
25	26	27	28	29	30	

 Eastern Time - US & Canada (11:35am) ▾

10:00am

11:00am

1:00pm

2:00pm

3:00pm

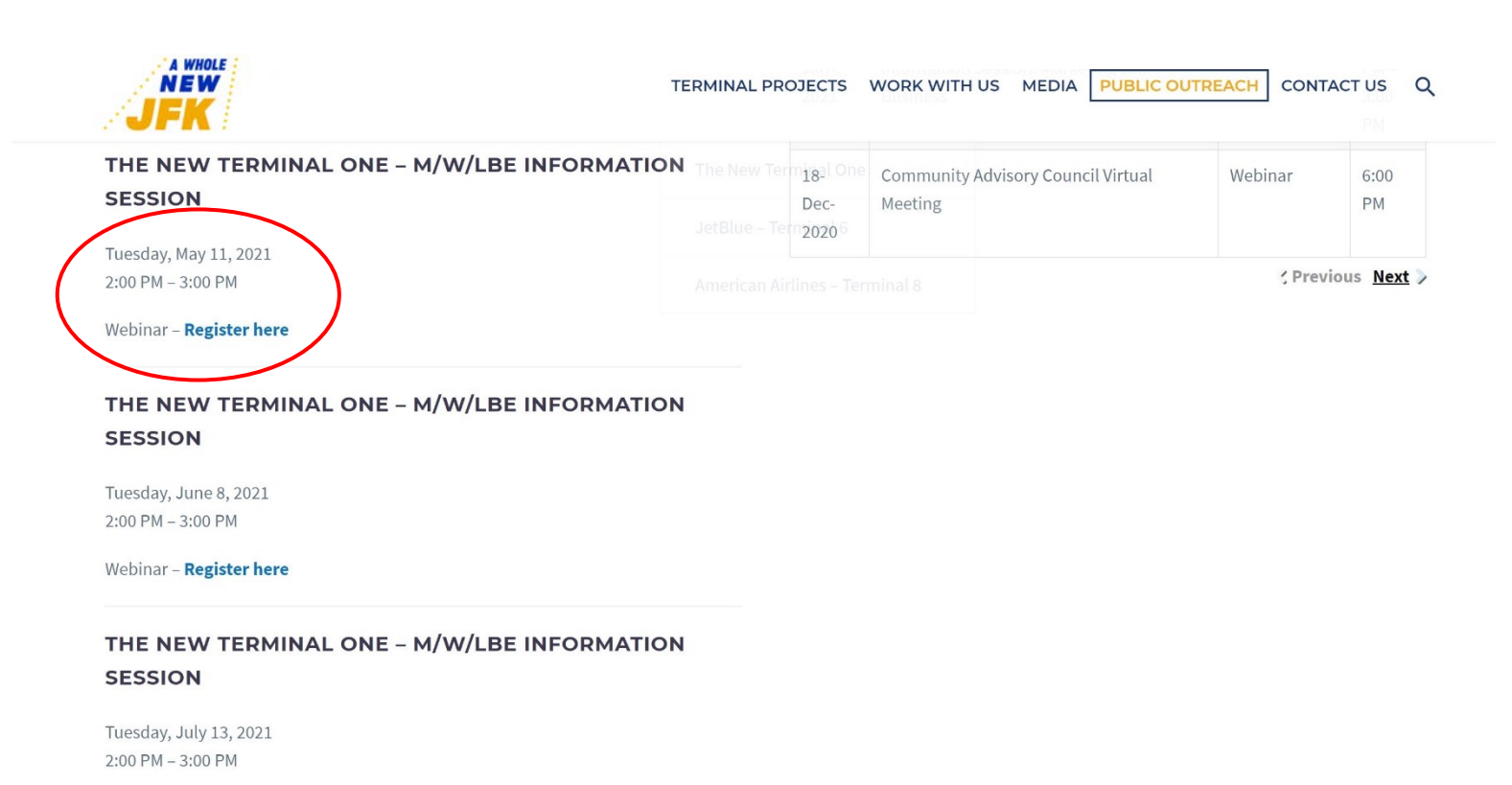
4:00pm

Stay Connected with The New Terminal One

Visit us at
www.anewjfk.com

*Follow The Public Calendar for
Upcoming Events*

Next:
**M/W/LBE Information
Session**
May 11th at 2:00pm



The screenshot shows the JFK website's navigation menu with 'PUBLIC OUTREACH' highlighted. Below the menu is a calendar for 'THE NEW TERMINAL ONE - M/W/LBE INFORMATION SESSION'. The first session is circled in red and lists the date 'Tuesday, May 11, 2021' and time '2:00 PM - 3:00 PM', with a link to 'Webinar - Register here'. The second session is for 'Tuesday, June 8, 2021' and the third for 'Tuesday, July 13, 2021'. To the right, a partial calendar grid is visible, showing dates like '18-Dec-2020' and '6:00 PM'.

Stay Connected with The New Terminal One

Visit us at
www.anewjfk.com

Schedule a Virtual Meeting via
our online portal.

Follow the Public Calendar for
Upcoming events

Next: M/W/LBE Information Session
May 11th at 2:00pm

For more information
email us at
info@onejfk.com



Q&A

The New Terminal One at JFK
Contact us at: info@onejfk.com

