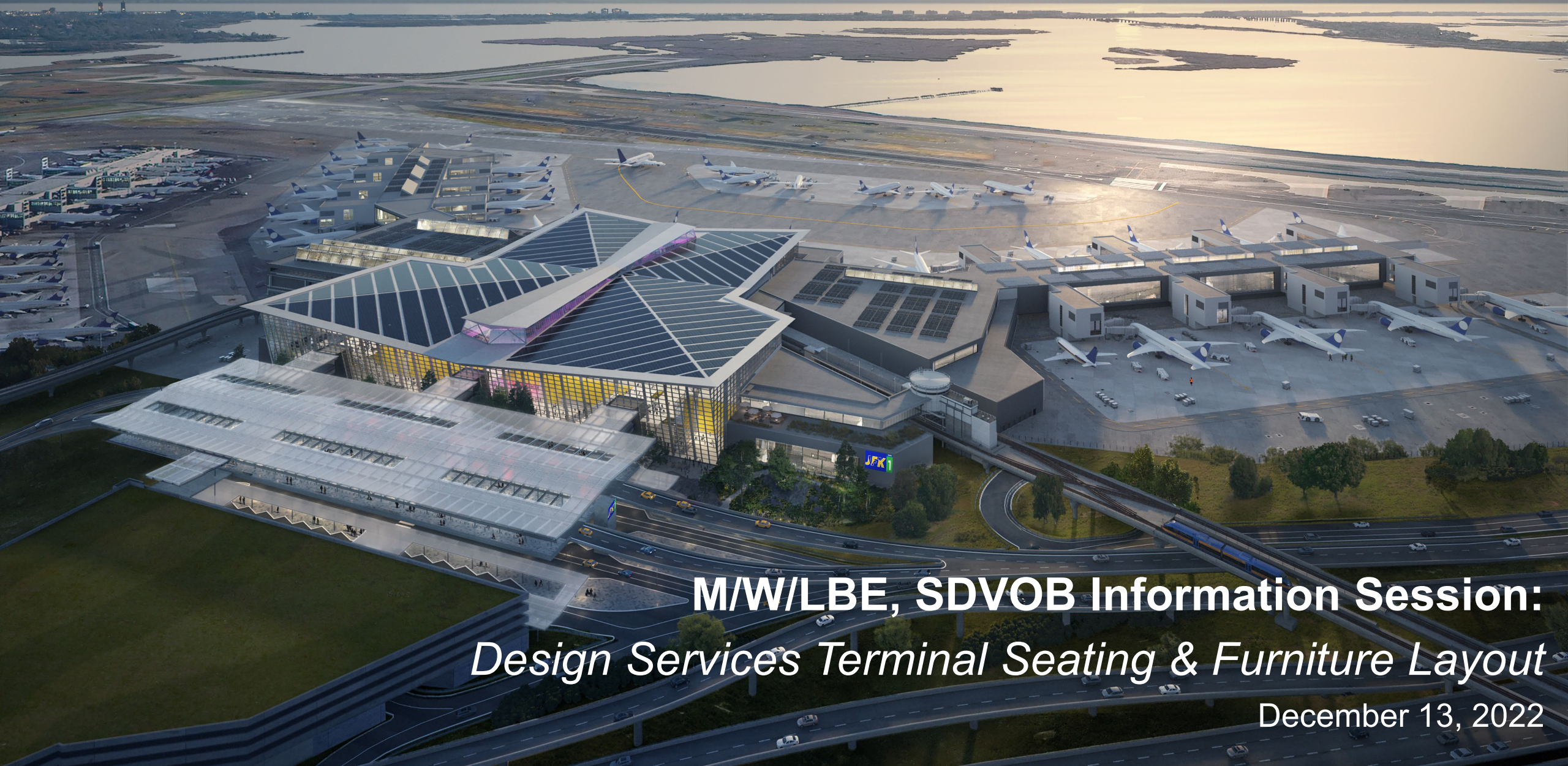


THE NEW TERMINAL ONE

JFK INTERNATIONAL AIRPORT



M/W/LBE, SDVOB Information Session:
Design Services Terminal Seating & Furniture Layout

December 13, 2022

Agenda

❑ Commitment to Diversity

Kimberly D. Hardy, M/WBE Participation, New Terminal One

❑ Project Overview

Tony Caccavone, MSA Director, New Terminal One

❑ Design Services for Seating and Furniture Layout

Palmina Whelan, President, Palmina Whelan Strategic Solutions,
New Terminal One

Jose Antonio Alvarez, MSA Operations Lead, New Terminal One

❑ Questions & Answers



THE NEW TERMINAL ONE
JFK INTERNATIONAL AIRPORT

**M/W/LBE & SDVOB
Information Session:**
*Design Services for Furniture, Fixtures
& Equipment (FF&E) Layouts*

**Tuesday, December 13, 2022
2:00 PM**

REGISTER HERE
For more information: www.anewjfk.com

Join us for an information session on the procurement and design of holding rooms and common seating areas in The New Terminal One.

A WHOLE NEW JFK

Today's Speakers



Jose Antonio Alvarez
MSA Operations Lead
New Terminal One



Tony Caccavone
MSA Director
New Terminal One



Kimberly D. Hardy
M/WBE Participation
New Terminal One



Palmina Whelan
President
Palmina Whelan
Strategic Solutions
New Terminal One

Reaffirming Our Commitments

- On September 8th, The New Terminal One, the largest terminal at JFK International Airport, broke ground and represents an integral part of the overall redevelopment program now underway.
- The reimagined terminal will have state-of-the-art technology, best sustainability practices, public art, local concessions, and revamped roadways to create a transformative and positive world-class passenger experience.
- The construction is in phases, with the arrivals and departures hall and 14 new gates set to open in 2026, just in time for the NY/NJ FIFA World Cup.
- 30% M/WBE goal (20% MBE, 10% WBE) and 10% LBE goal across all phases and disciplines of the project
- 3% SDVOB goal for design and construction



NTO recognizes the importance of creating jobs, supporting local businesses, promoting diversity, and delivering opportunities to the local community

Our World-Class Team

FINANCIAL SPONSORS	   
CAPITAL PROJECT DELIVERY	     
DESIGN-BUILDER	 
MASTER CONCESSIONAIRE	

The New Terminal One Redevelopment Project

To be built on site of the existing Terminal 1, Terminal 2 and former Terminal 3

9 Widebody Gates / **1** Narrow body Gate

0.7 million square foot building

45 acres (current T1 site)

All-International traffic



23 Widebody Gates / **1** Narrow body Gate

2.4 million square foot building

134 acres (current T1, T2 and former T3 sites)

All-International traffic



2.4M square feet of terminal space, **250% larger** than existing terminal

More than **300,000 square feet** of dining, retail, lounges, and recreational space, offering passengers a uniquely New York sense of place.

An aerial architectural rendering of the new JFK Terminal One. The terminal is a large, modern building with a complex, multi-faceted roof and glass walls. It is situated next to a large body of water, with a highway and a train line running alongside it. Several airplanes are visible on the tarmac. The text "Design Services Terminal Seating & Furniture Layout" is overlaid in white on the image.

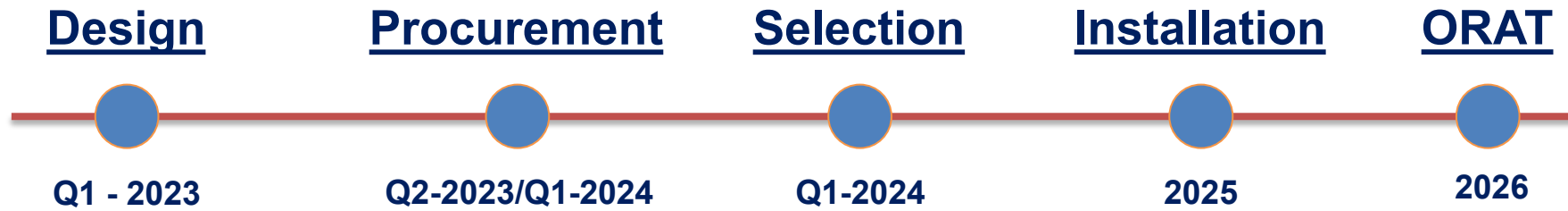
Design Services Terminal Seating & Furniture Layout

Scope of Work

- Develop the vision and enhance the passenger experience with strategic identification and placement of aviation terminal hold room seating, interior and exterior seating and furniture for the JFK New Terminal One.
- Builds upon the architecture sense of place and the grandness of scale.
- Respects and integrates the design sense of place, the commercial product, the advertising program and the art and branding program.
- Coordinates with the overall team and key stakeholders.
- Balances the development of a World Class vibrant and dynamic environments with an efficient airport passenger travel experience

Objective	Status Quo
Seating options	Uniformity of seating options
Choices: Integration of different type of furniture, tables, and chair (different heights) different uses, etc.	No choices: Hold rooms with one purpose, waiting for the aircraft
Low stress ambient – Open space	High Stress ambient – row of seating, enclosed ambient
Plant variety	No landscaping
Full availability of International Power Outlets, USB connectors, etc.	No electricity supply or low availability

RFP Process*



**Target dates*

An aerial photograph of the John F. Kennedy International Airport terminal and tarmac. The terminal is a large, modern building with a glass facade and a flat roof. Numerous commercial aircraft are parked at the gates along the terminal. The tarmac is a vast, flat area with various ground support equipment and smaller aircraft. In the background, the airport's runways and taxiways are visible, along with the surrounding water and distant land. The image is overlaid with a semi-transparent blue filter.

Q & A

JFK

JFK



Stay Connected


Office Hours

- Register for 1-on-1 Meetings:
 - **Virtual:** Daily from 9:00am to 5:00pm
 - **In-Person at JFKR Community Information Center:** Wednesdays from 12:00pm to 5:00pm


2023 Upcoming Sessions

- M/W/LBE, SDVOB Information Session, January 10
- NTO-RDRC Local Workforce Event, January 18
- M/W/LBE, SDVOB Information Session, February 14
- M/W/LBE, SDVOB Information Session, March 14

☐




Virtual Office Hour Meeting
30 mins, One-on-One
[View booking page](#)




[Copy link](#) [Share](#)

☐



In-Person Office Hour Meeting
45 mins, One-on-One
[View booking page](#)



[Copy link](#) [Share](#)



To learn more visit:
www.anewjfk.com/projects/the-new-terminal-one/

General Inquiries: info@onejfk.com