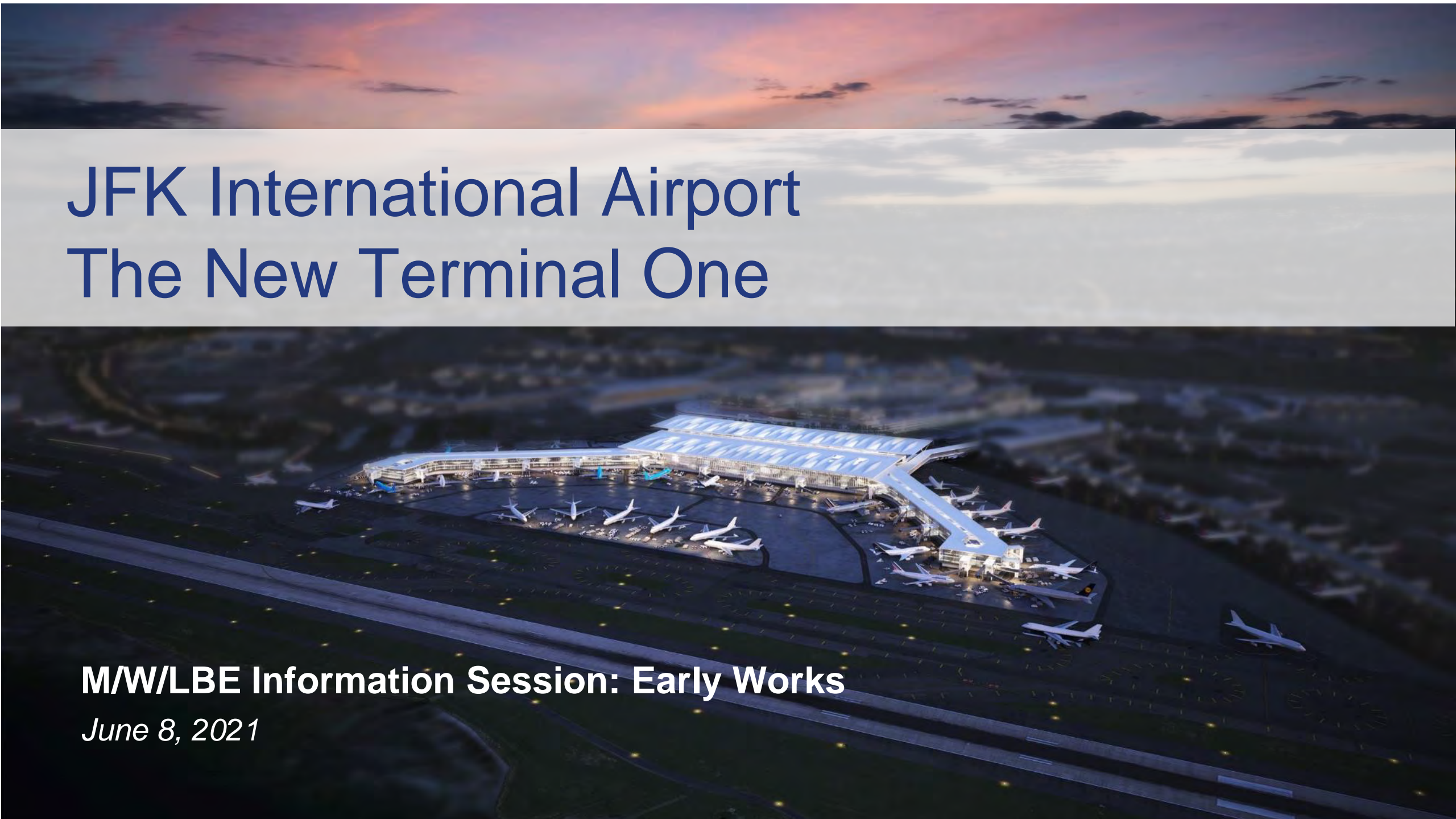


# JFK International Airport The New Terminal One

**M/W/LBE Information Session: Early Works**

*June 8, 2021*



# Overview

- **The New Terminal One at JFK Project Update**

- Kimberly D. Hardy, Director, M/WBE Participation, The New Terminal One

- **Early Works**

- Andy Marshall, Director Buildings, The New Terminal One
- Frank Scandariato, Director Design and Construction, The New Terminal One
- Project Overview
- Project Footprint
- Early Works Program Overview
- Scopes of Work
- Schedule and Timing

- **Stay connected with The New Terminal One**

# Commitment to Diversity

## Diversity efforts start with The New Terminal One's Leadership:

- **Dr. Gerrard P. Bushell**, Executive Chair of The New Terminal One and Chair of Carlyle Airport Group Holdings, is a leader with experience in government, labor and the private sector. Dr. Bushell served as the President and CEO of the Dormitory Authority of the State of NY (DASNY) where he deployed more than \$38 billion of capital and financing and managed a construction portfolio valued at over \$6 billion in construction projects all while advancing the State's M/WBE goals beyond 30% for DASNY.
- **JLC Infrastructure** is a 30% equity partner. JLC Infrastructure is a leading investment firm with a strong track record and presence in NY and is a registered MBE with the PANYNJ. JLC's participation since the inception of the project has helped to drive the commitment to fostering diversity.
- **McKissack & McKissack**, the oldest woman and minority-owned design and construction firm in the US, is leading the Project Management Office. Cheryl McKissack Daniel, its President and CEO, is actively engaged with The New Terminal One as an advisor. McKissack has a formidable track record of delivering projects that meet and often exceed MWBE goals. Its portfolio of projects includes: World Trade Center, Columbia University, Metropolitan Transportation Authority (as Independent Engineering Consultant for 8 years), Philadelphia International Airport and LaGuardia Airport.





# The New Terminal One Commitment

## Reaffirming Our Commitments

- **30% M/WBE goal (20% MBE, 10% WBE)** across all phases and disciplines of the project
- Driving New York State's nation leading **M/WBE participation for the project beyond \$1 billion**
- Hiring goals for minorities and women (**40% for laborers, 30% for other trades and 7% for women**)
- **Prioritization of local firms** starting with SE Queens and Western Nassau, followed by Borough of Queens and NY/NJ Port District

Dear Partners:

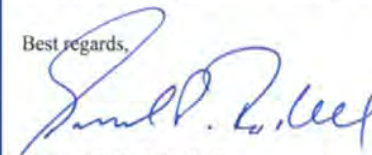
We are delivering one of the most important infrastructure projects across the globe at The New Terminal One at JFK International Airport. We are proud to partner with the Port Authority of New York and New Jersey and execute on Governor Cuomo's vision of a world-class airport. To that end, we are committed to driving innovation, excellence, and diversity and inclusion.

One of the most important themes central to our designation as the developer and operator of The New Terminal One is our commitment to "Diversity and Inclusion." We are building a business where our DNA reflects the importance of building partnerships embracing and reflecting the diversity of the JFK-area community, New York City, and the State of New York.

We require our partners to create opportunities for Minority- and Women-Owned-Business Enterprises (MWBE) and Local Business Enterprises (LBE). We expect our engagements to present plans and benchmarks to meet and exceed the 30% MWBE goals. Our procurements are designed to deliver best-in-class services and commodities. We are also looking for our partners to be strategic and innovative in how they work with MWBE and LBE firms to build capacity, grow, and employ a diverse workforce. This expectation extends to all segments of our project: finance, design and construction, operations, and commercial activity. These commitments permeate everything we do as we drive innovation and performance at The New Terminal One at JFK and deliver a world-class terminal.

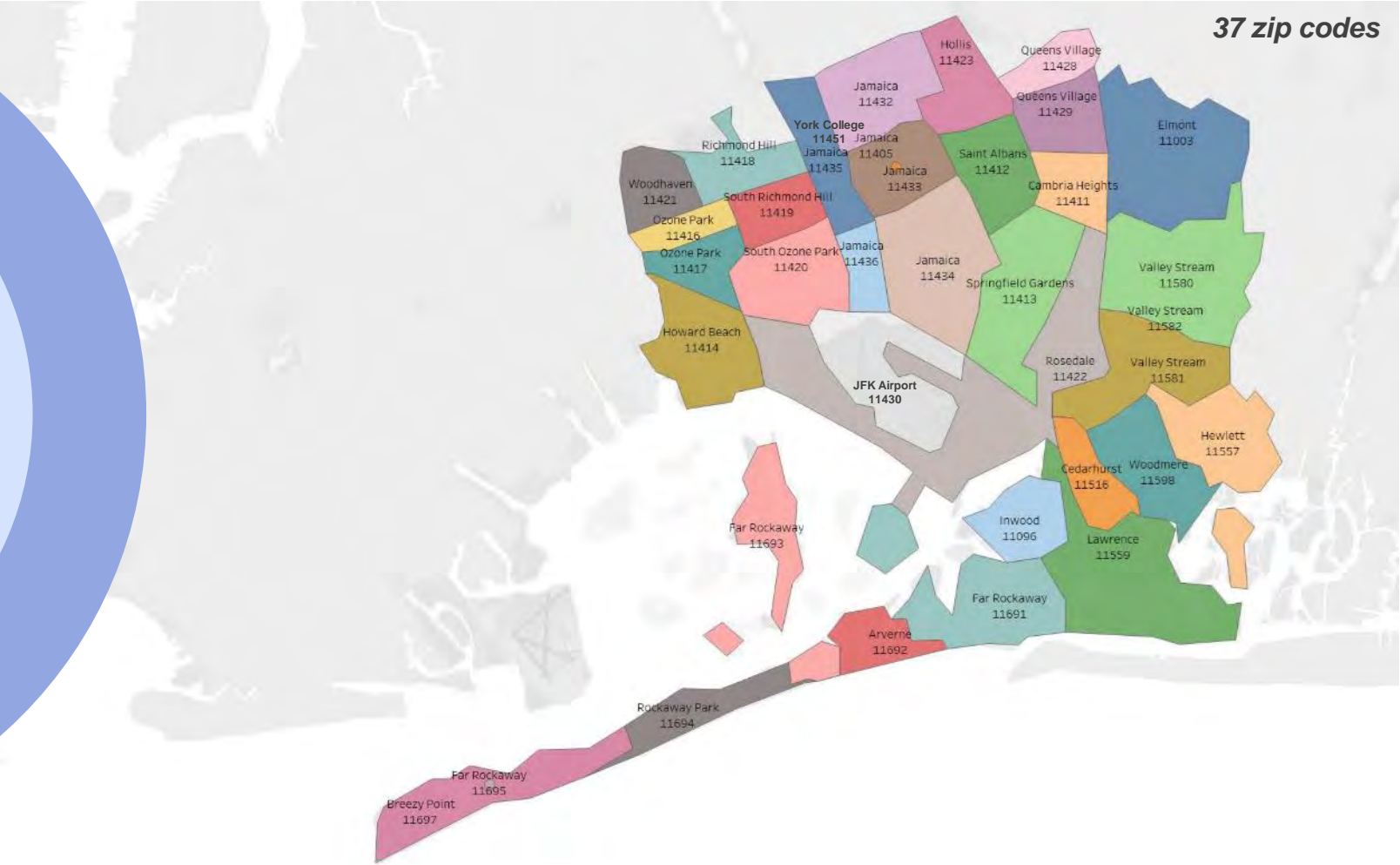
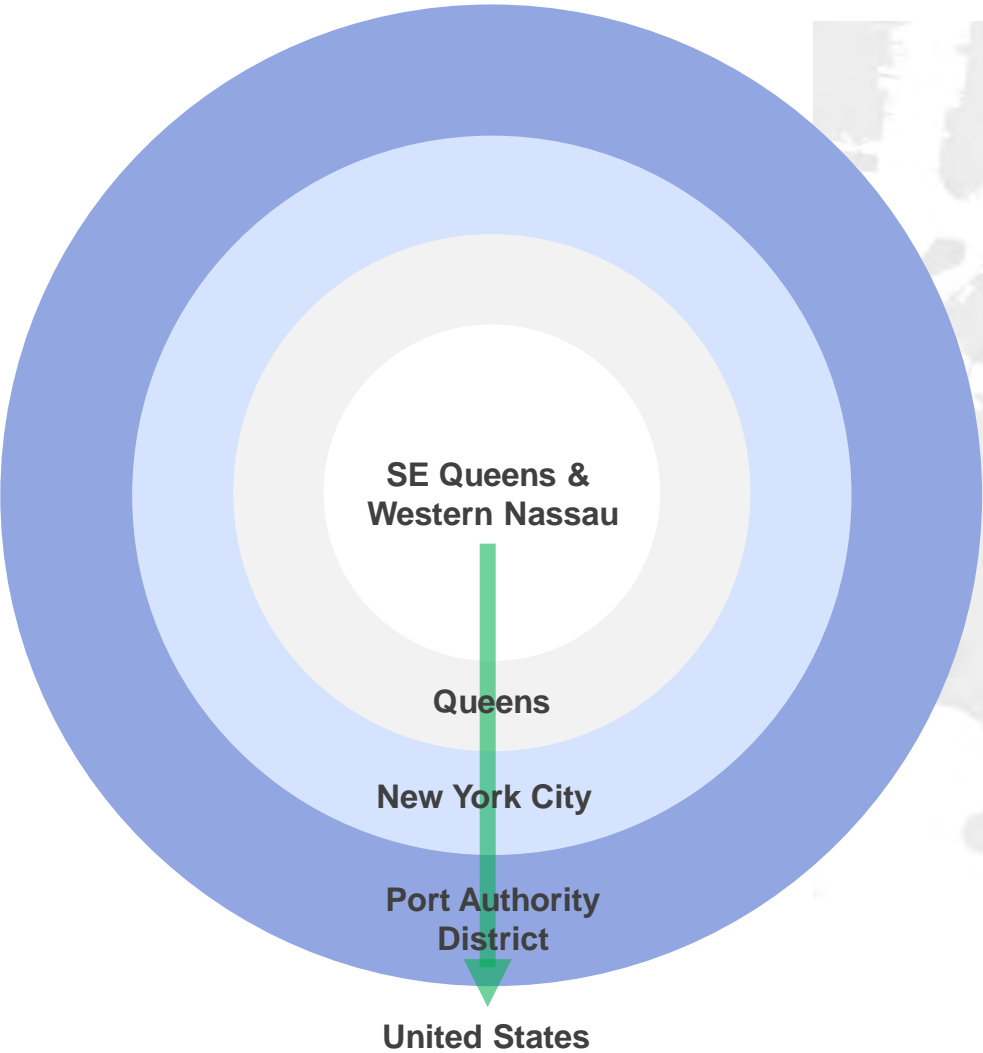
We demand your best thinking and expect you to deliver exceptional results. Our team, including Kim Hardy, Director, MWBE Participation, at [khardy@onejfk.com](mailto:khardy@onejfk.com) or (917) 405-0526, will engage with you throughout the project. We look forward to working closely with you to achieve these goals.

Best regards,



Gerrard P. Bushell, Ph.D.

# Local Prioritization for New Opportunities



# Creating Opportunities for the Community & Region

Jobs



**5,000+** local construction jobs  
**10,000+** permanent jobs with continuity from the current Terminal One

Local



**Creating** opportunities for local firms and residents  
**Prioritizing** 37 local zip codes, Queens and NY/NJ

MWBE



**30% MWBE** participation goal across all disciplines and phases including at the Financial Sponsor level and professional services

Labor



**Project Labor Agreement** with leading MWBE/local provisions  
**Building Trades** investing through Ullico as a Financial Sponsor

Community  
Involvement



**Initiatives** on education, workforce, environmental and business development  
**JFK Airport Academy** to upskill local workforce

# Presenters

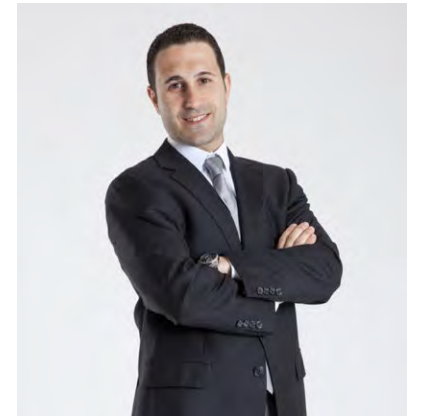


## **Andy Marshall** **Director of Buildings**

- Over 22 years building experience as CM, GC and Owner's advisor for major infrastructure projects in the NYC area.
- Major projects include the LGA Airport - Delta and American Airlines, New NY Bridge, East Side Access, LIRR Jamaica Platform F, Coney Island Hospital, United Nations

## **Frank Scandariato** **Director, Construction**

- Head of Construction for JFK T1
- Major Design Build construction projects throughout NYC and US
- Project executive for the recent LaGuardia Central Terminal B Project





# Redevelopment of JFK Terminal One



**9** Widebody Gates / **1** Narrowbody Gate

**0.7** million square foot building

**45** acres (current T1 site)

**All-International** traffic



**THE NEW TERMINAL ONE**  
JFK INTERNATIONAL AIRPORT

**THE NEW TERMINAL ONE**  
JFK INTERNATIONAL AIRPORT

**22** Widebody Gates / **1** Narrowbody Gate

**2.7** million square foot building

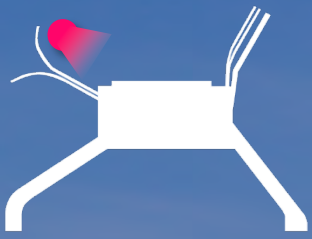
**144** acres (current T1, T2 and former T3 sites)

**All-International** traffic



PRIVATE & CONFIDENTIAL

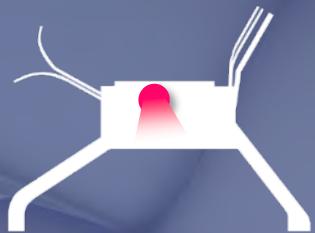




Curbside



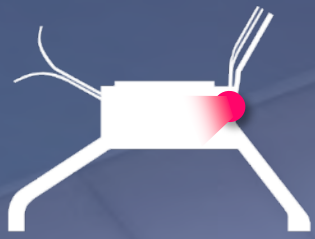




# Departures Hall



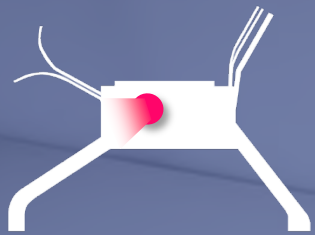




# Commercial Zone



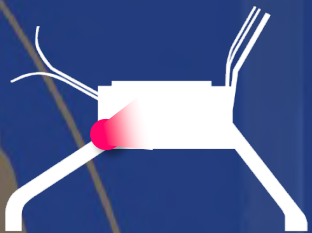




# Commercial Zone







# Arrivals Corridor

# JFK

## INTERNATIONAL AIRPORT

DRINKS

CONCOURSE



# Project - Overview

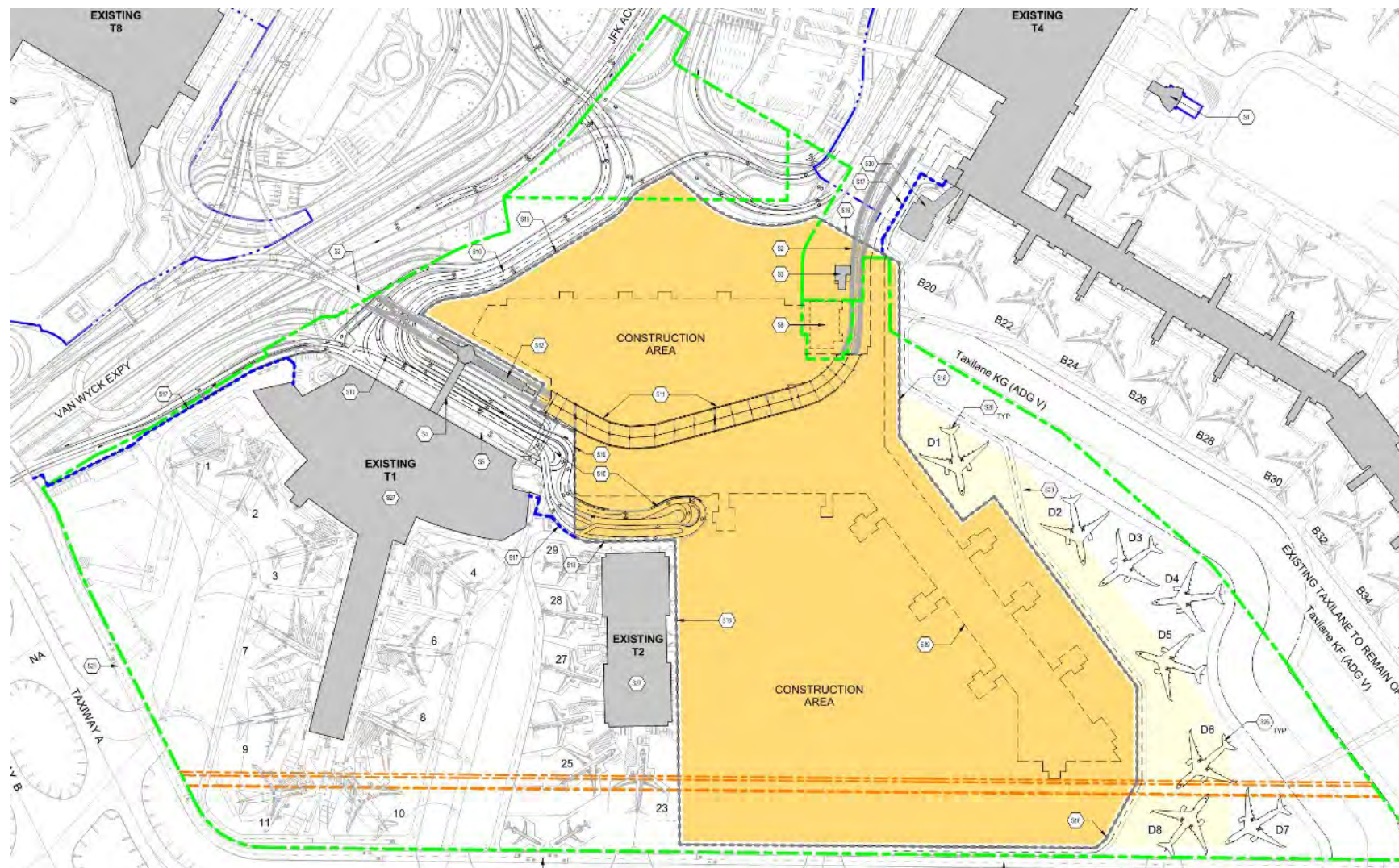
Phase A0 (3 Months): Site Capture, Demo

## Phase A (44 Months)

- A0 (3 Months)
- A1/A2 (41 Months)

## Phase B (40 Months)

- B0 (4 Months) \*concurrent
- B1 (22 Months)
- B2 (18 Months)

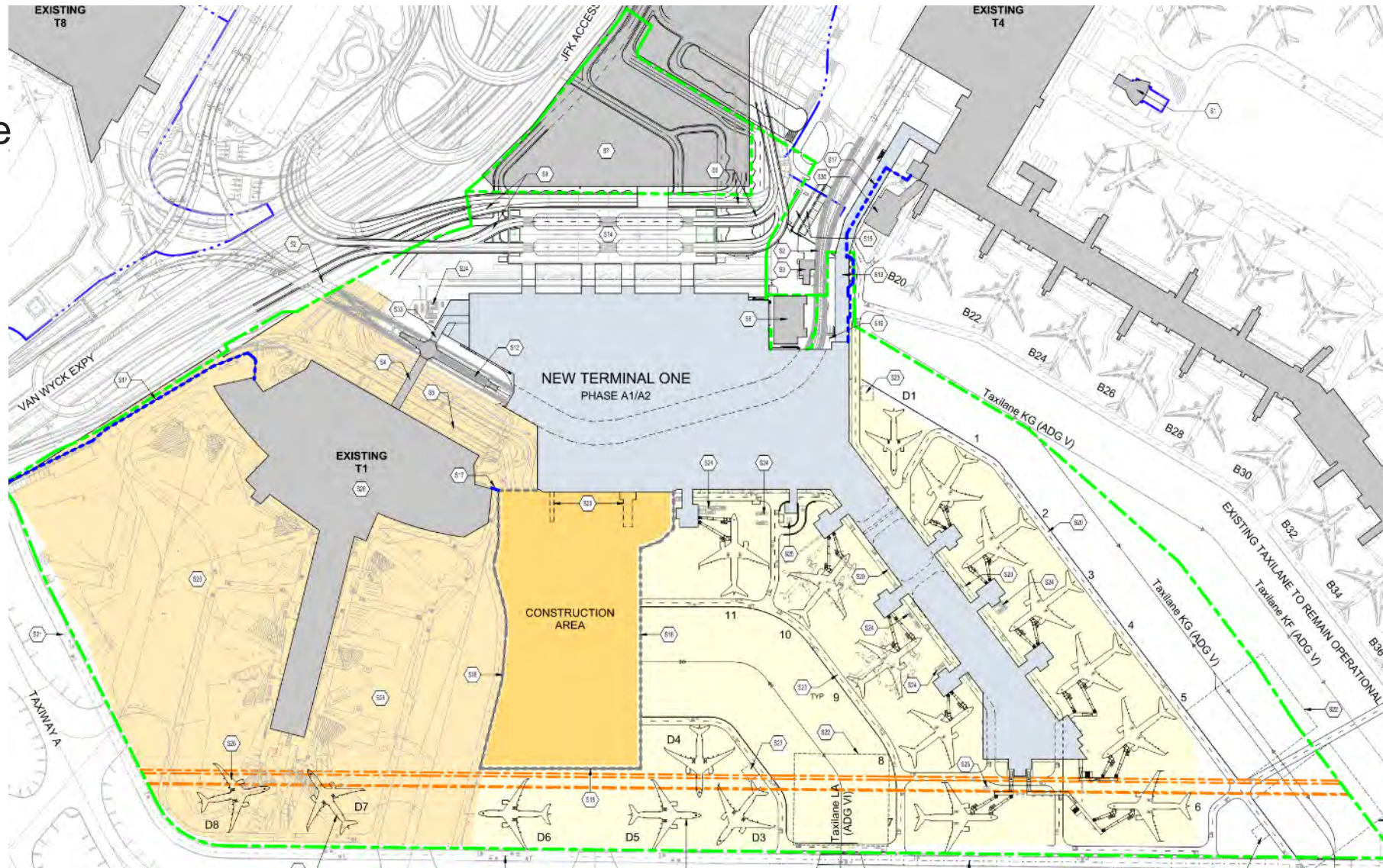




# Project - Overview

Phase A1/2/3 (41 Months)

- Construct Head House and East Pier (11 gates)
- Phase A3 – Demo T2, construct 2 gates

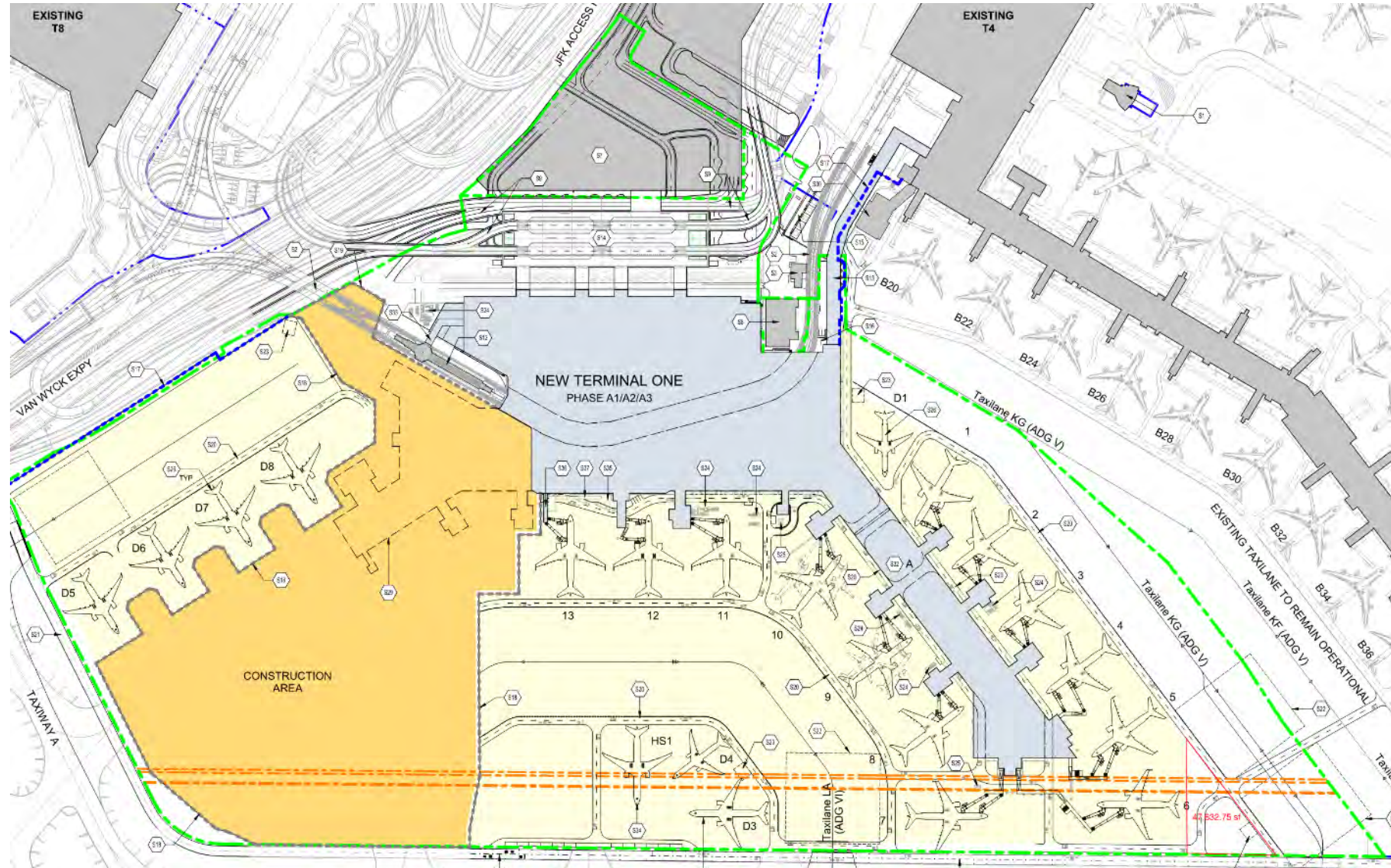




# Project - Overview

Phase B0 (4 Months)

- Site Capture
- Demo Old T1

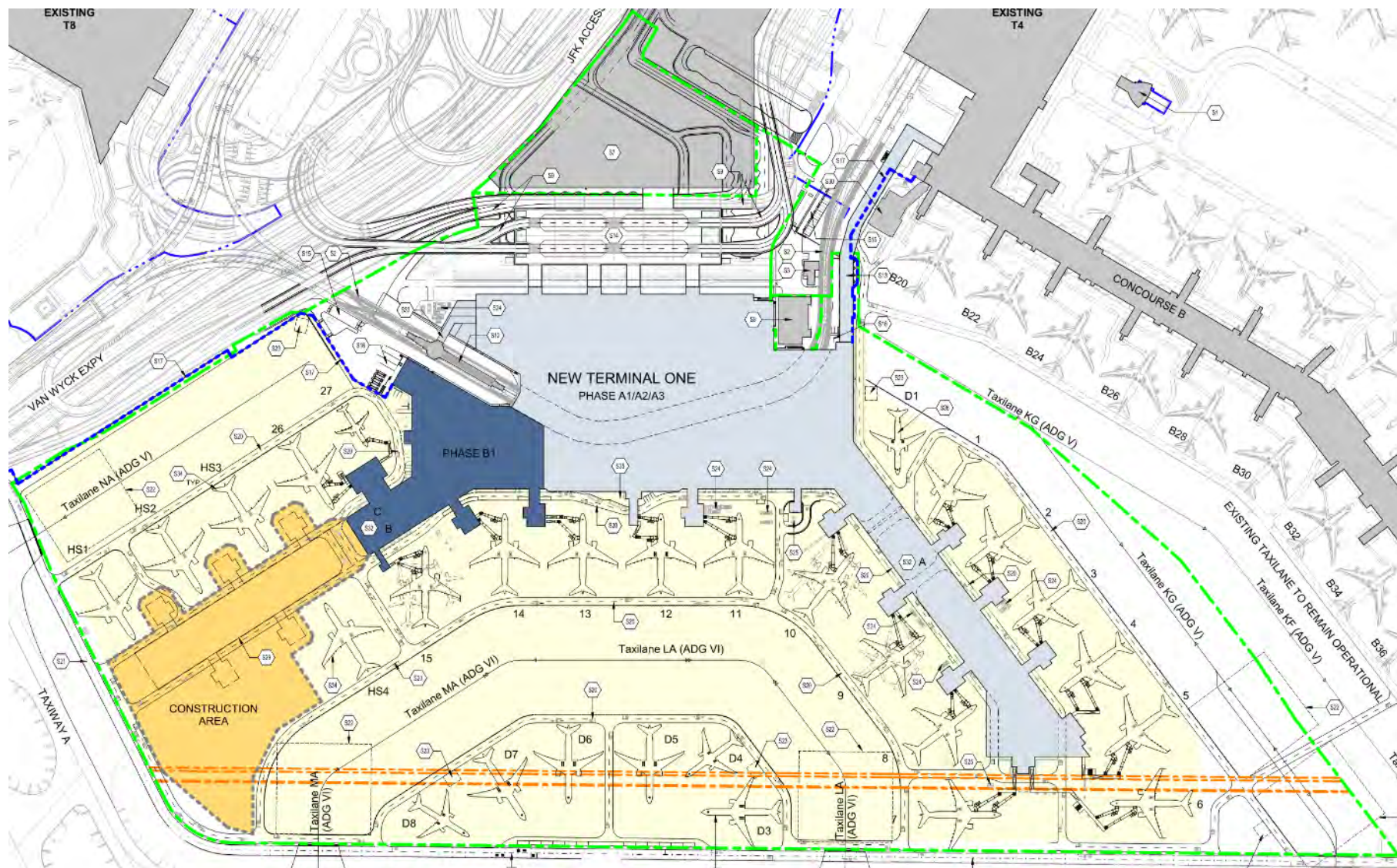




# Project - Overview

Phase B1 (22 Months)

- Concurrent with Phase B0, construct remaining head house
- Half of West Pier (5 gates)

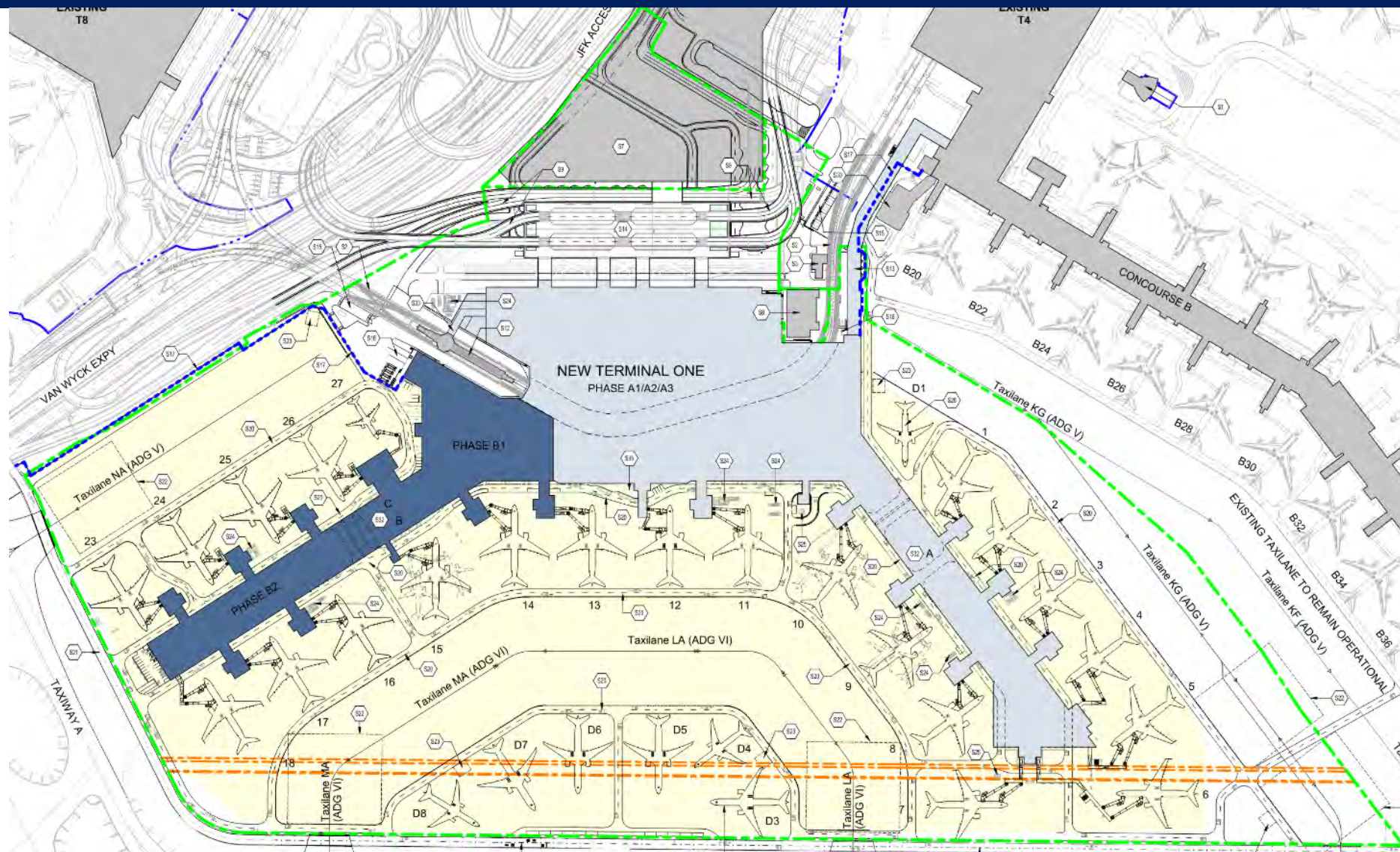




# Project - Overview

Phase B2 (18 Months)

- Construct remaining West Pier (5 gates)



# Early Works Program Overview

## Site Mobilization

- Site Trailers
- Fencing
- Laydown Area Setup
- Hazardous Material remediation

## Utilities

- Rerouted Temporary Utilities
- Permanent Utilities

## Concrete & Foundations

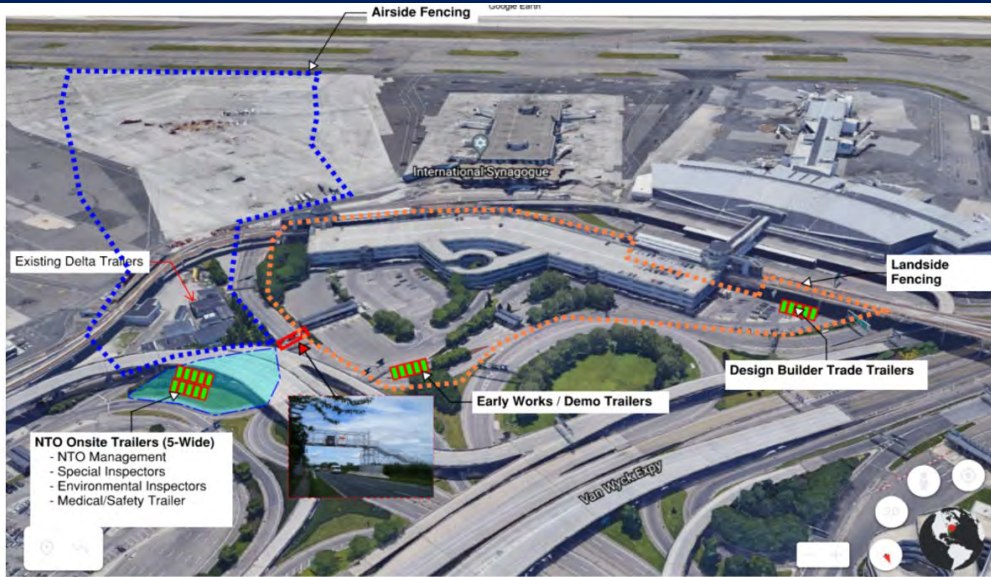
- Rebar
- Concrete Slabs
- Piles / Caps
- Utility Concrete
- Flatwork

## Civil Works & MPT

- Early Works
- Develop Staging Areas
- Construction Access



# Site Mobilization



On-Site Mobilization

## On-Site Mobilization

- Trailer Hookups
- Cleaning / Janitorial Services for Trailers/Offices
- Food Services / Catering for Construction Staff
- Fencing
- Security for designated Areas



Mobilization Areas

## Mobilization Areas

- Trailer Hookups
- Security for Laydown/Storage Areas
- IT/Comms for Trailers/offices
- Signage/Wayfinding
- Material / Supplies Area



# Site Mobilization

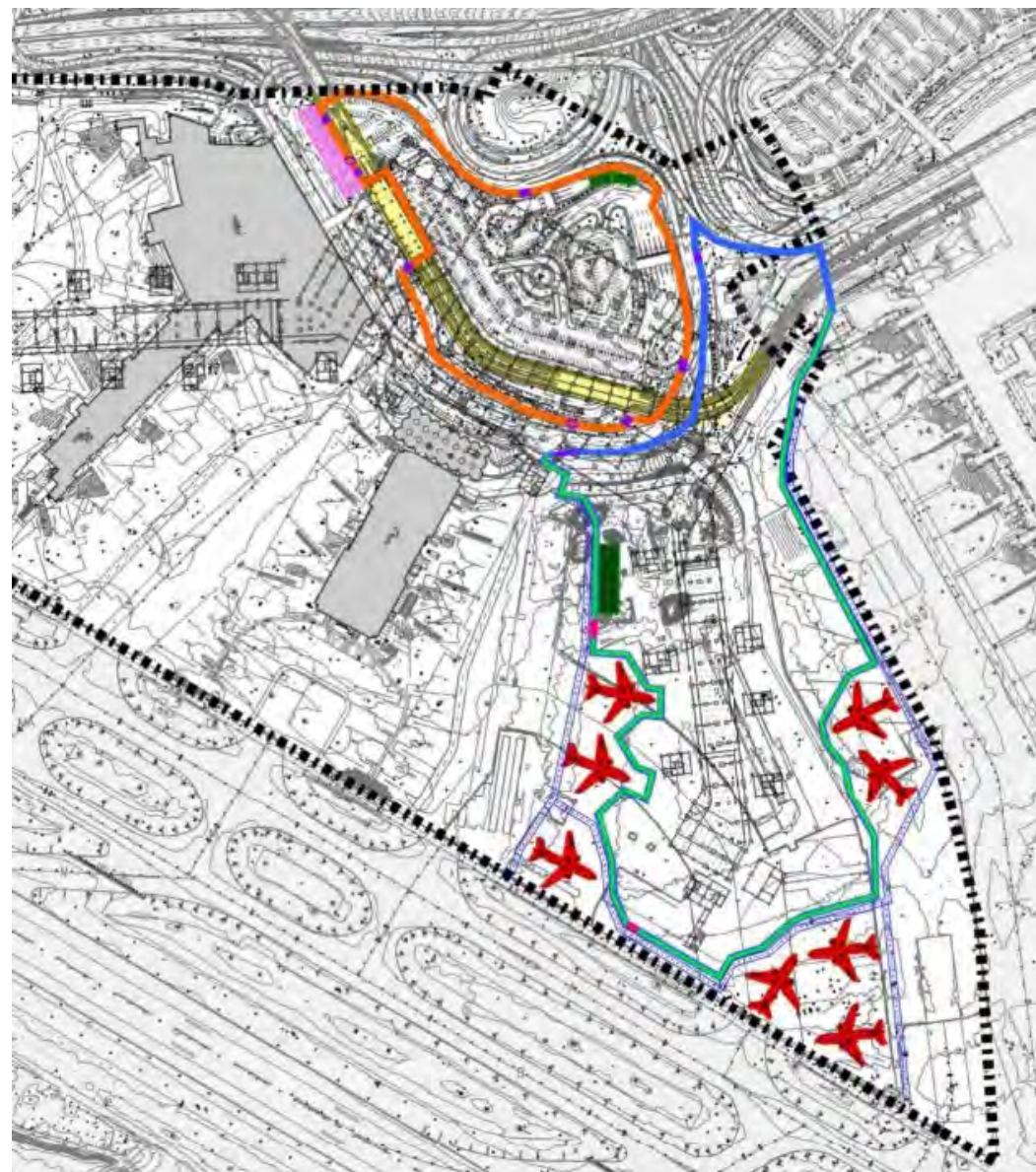


- Approximately 10 acres – 2 miles west of New Terminal

# Site Mobilization

## STAGING KEY

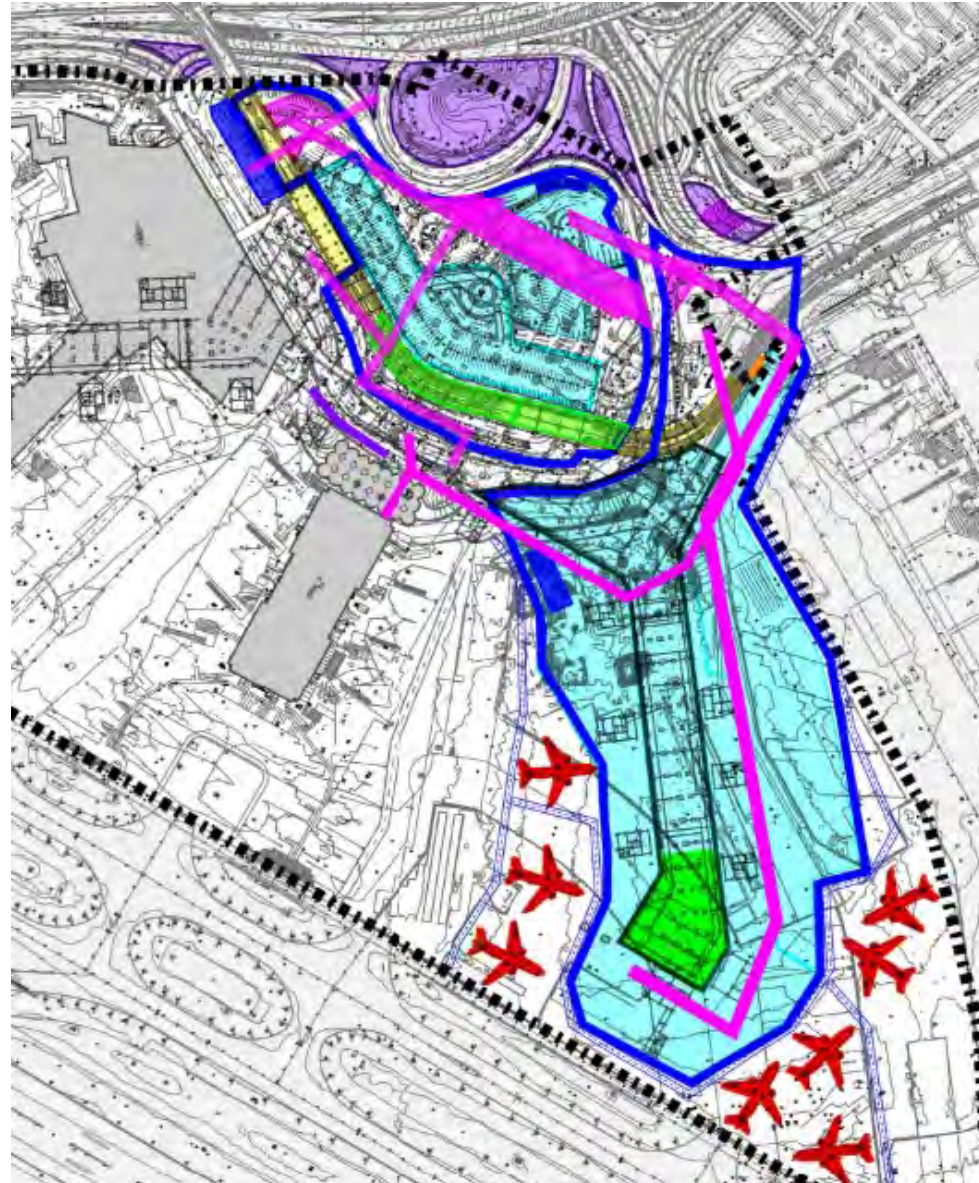
- Site A Fence
- Site B Fence
- Airside PIDS Fence
- Gates "Truck" Entrances
- Air side Gates
- Turnstile
- Landside Queing
- Trailer Staging
- Delta VSR
- Delta Hardstand





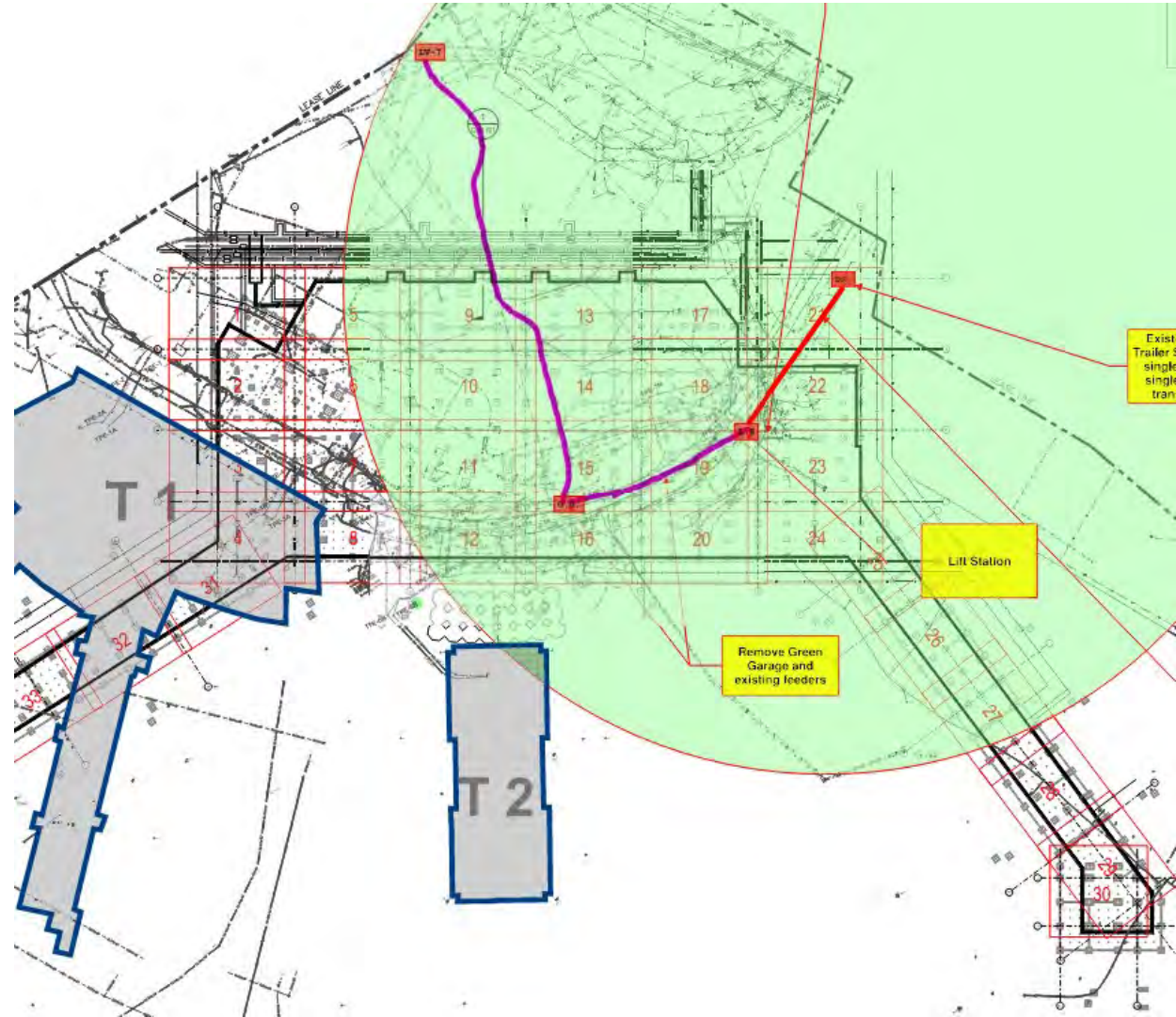
# Utilities

- Early Works Months 1-6



# Utilities

- DESIGN – ONGOING  
(N+6)
- INSTALLATION
  - Temp T2 Power
  - Temp NTO Power
  - Relocate Power/Coms  
old LRS2

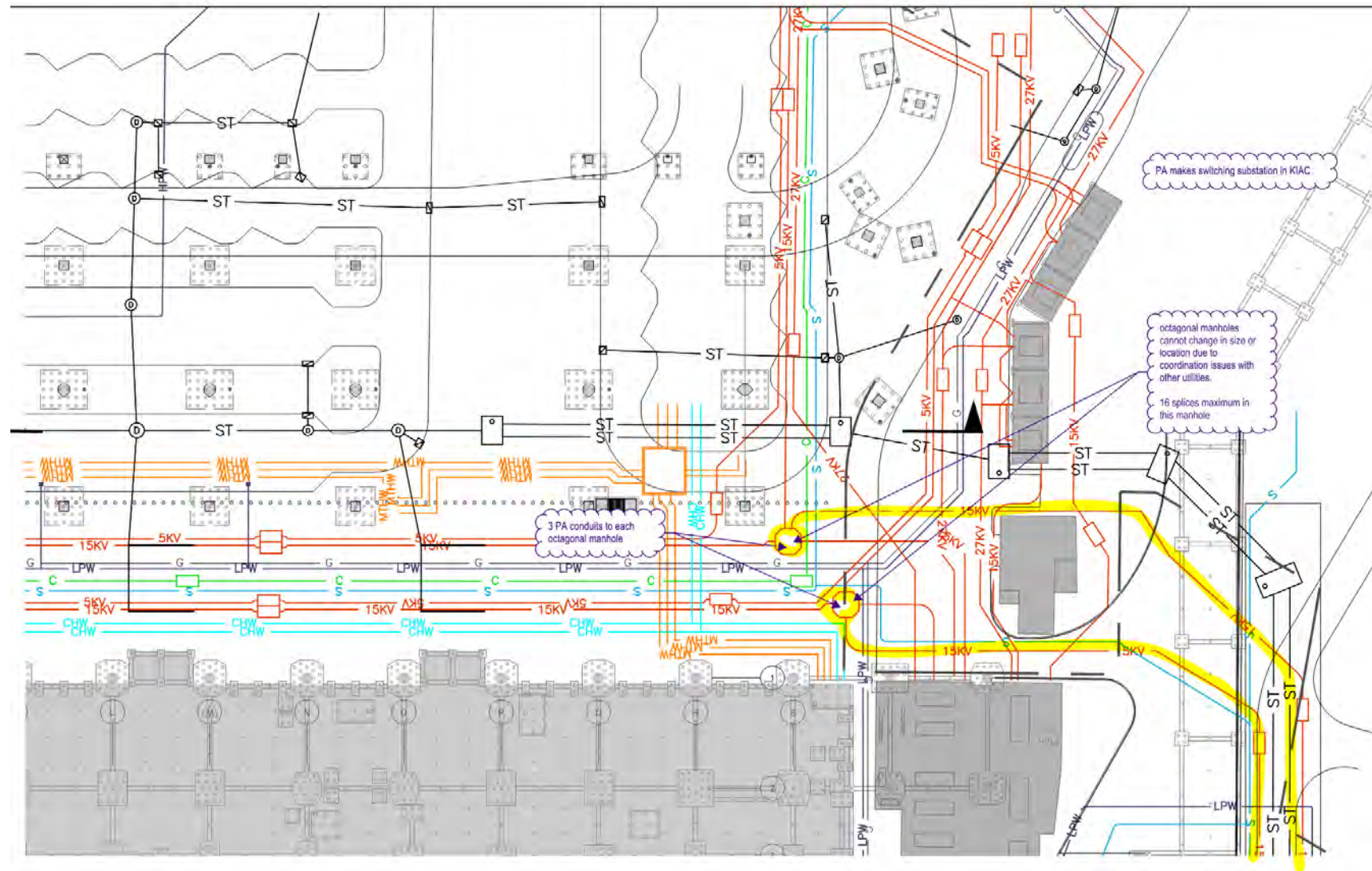




# Utilities

## ■ INSTALLATION

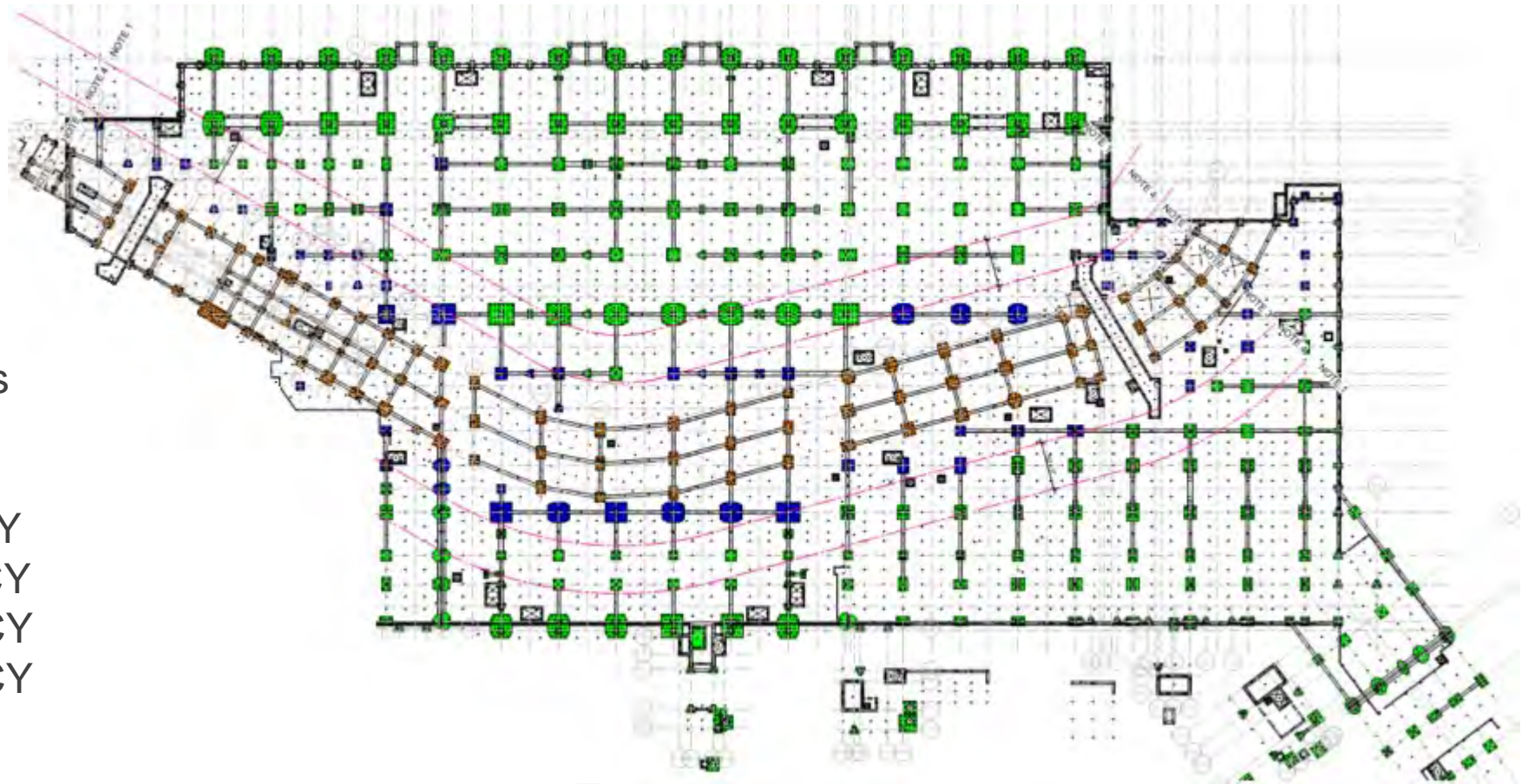
- Temp T2 Power
- Temp NTO Power
- Relocate Power/Coms  
old LRS2
- Temp MTHW
- Temp Drainage



# Concrete & Foundations

Concrete Totals Months  
1-12

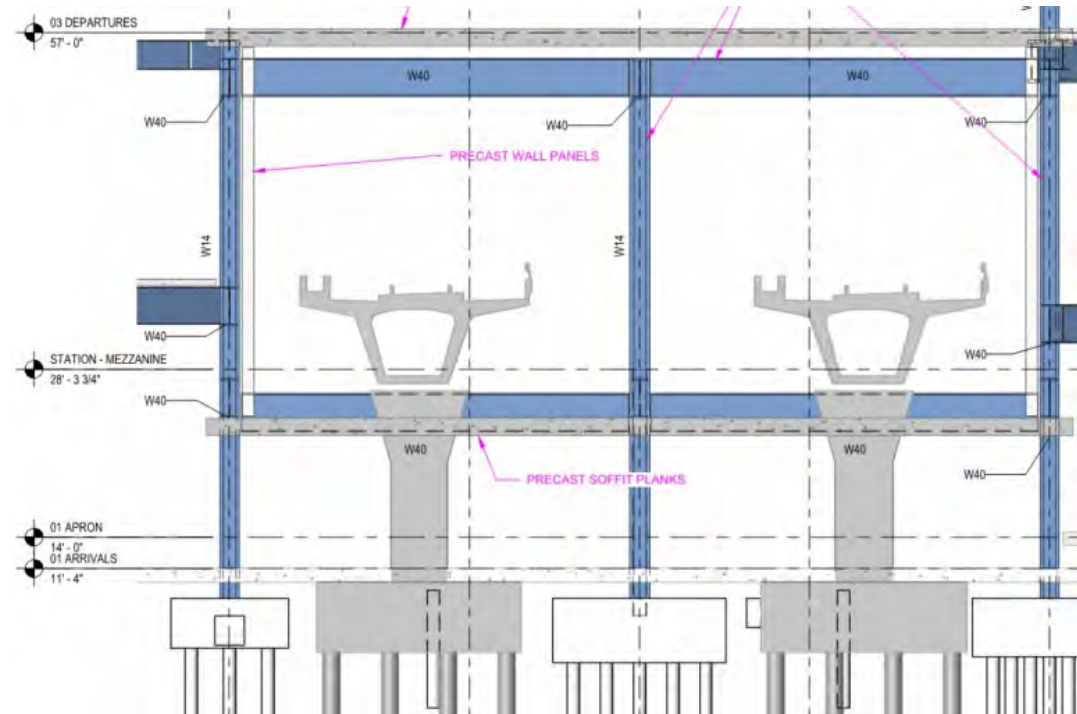
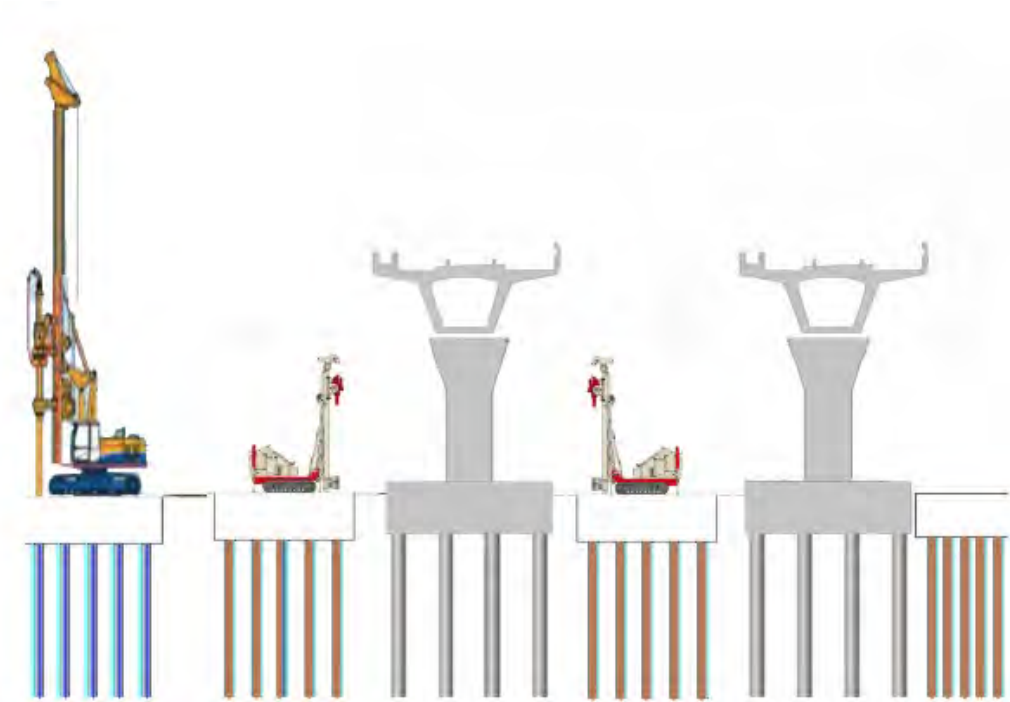
Temp: 800 CY  
Utilities: 1,500 CY  
Roadways: 5,000 CY  
Foundations: 45,000 CY



- 180 ton 18" dia. Taper Tube Piles
- 175 ton 16" dia. Drilled Displacement Piles
- 80 ton 11-5/8" Drilled Micro-piles



# Concrete & Foundations



**Micro-pile foundations under the existing structure with low headroom drill rig.**

**Drilled Displacement piles within 50' zone.**

# Civil Works & Maintenance and Protection of Traffic



FIGURE 34-1-2

## CONSTRUCTION PHASE I

### PHASE I CONSTRUCTION:

- Maintain traffic on all existing facilities while protected behind warning devices or temporary concrete barriers. All construction activities that impact the existing number of lanes due to drop-off conditions shall be performed during off-peak periods as approved by the Port Authority (PA).
- Construct portions of the temporary roadways (ramps) from EB Van Wyck to elevated T1 Departures and low level T1 Arrivals / T2 Bypass.
- Start Demolition of Green Garage, surface parking area, and access roadways.
- Relocate utilities in conflict with proposed and temporary construction elements.
- Start structure foundation and pier construction for elevated T1 Departure platform and the T4 Bypass platform. Only construct the structure not in conflict with existing traffic movement. Isolated temporary diversions may be necessary to account with foundation construction.
- Following foundation construction begin temporary roadways and ramps for T5/T7 loop ramp, and the JFK T1/T2 access roadways and ramps.
- Start construction for the Temporary JFK/T4 lower level ingress access ramp.
- Start Demolition of AirTrain Station 2 - Refer to YR-1001-02-002 for separate Advance Final Design package submitted for AirTrain Station 2 / Green Garage MOT currently under review by the PANYNJ.

## Civil Works / MPT

- Temporary Roads & Signage



# Early Works Program Opportunities

MWBE Opportunities	Target
General Supplies	\$
Cleaning	\$
Design, Permit Application	\$
Signage	\$
Site Fencing	\$\$
Staging Area Setup, Temp Road, Flatwork	\$\$
Construction Trailers, Temp Buildings	\$\$
Utility- Temp Connections	\$\$
Utility- Site Electric	\$\$\$
Utility- Civil	\$\$\$
Piles	\$\$\$

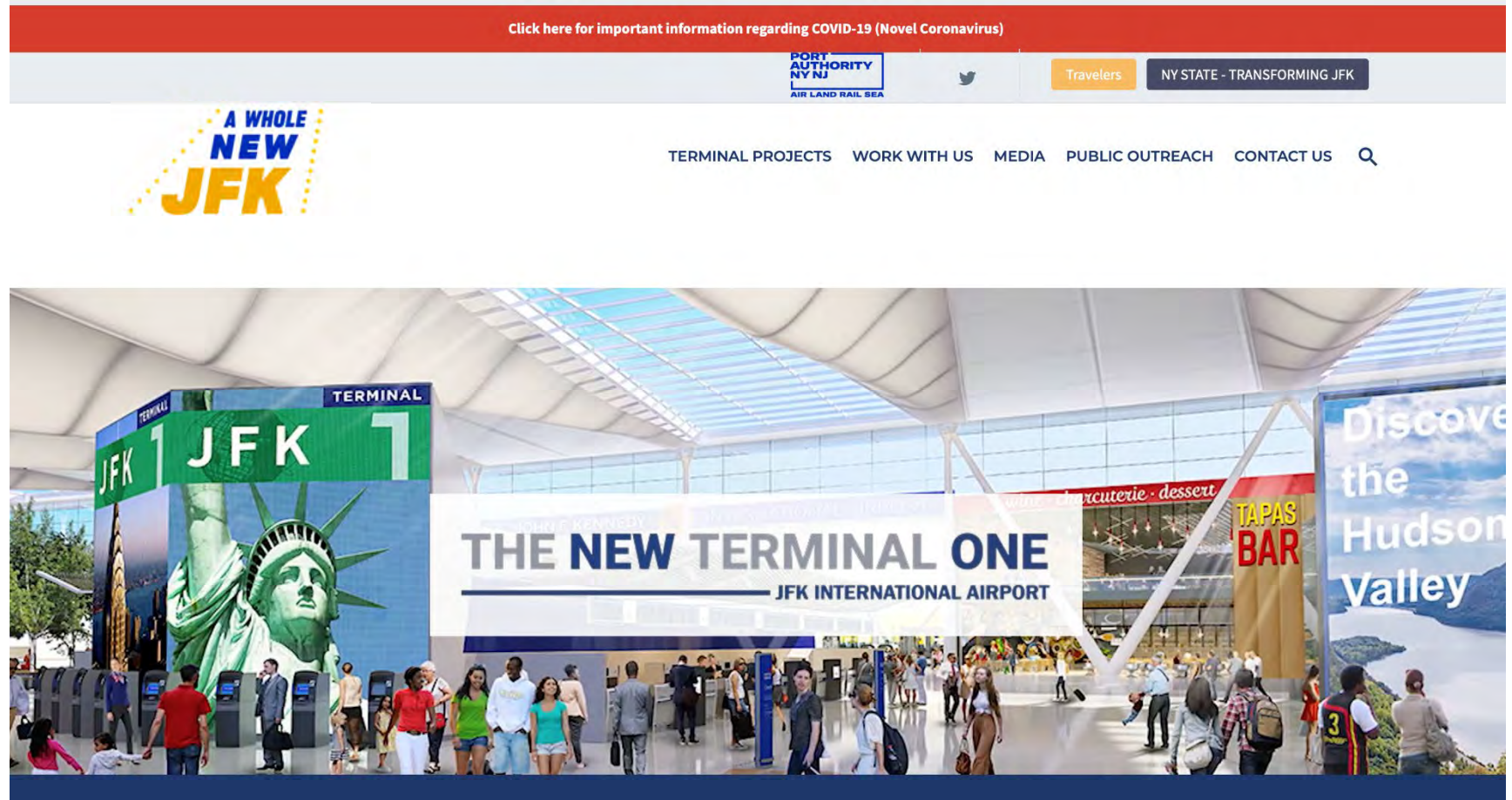
\$\$\$ = Over \$10M

\$\$ = \$1 - \$10M

\$ = \$0 - 1M

# Stay Connected with The New Terminal One

Visit us at:  
[www.anewjfk.com](http://www.anewjfk.com)






# Stay Connected with The New Terminal One


Visit us at:  
[www.anewjfk.com](http://www.anewjfk.com)


**Schedule a Virtual Office Hour Meeting via our online portal.**

  
**THE NEW TERMINAL ONE**  
JFK INTERNATIONAL AIRPORT

The New Terminal One at JFK International Airport

### New Terminal One Virtual Office Hours

 45 min

 Web conferencing details provided upon confirmation.

The New Terminal One Team is hosting Virtual Office hours, Monday through Friday from 9:00am to 5:00pm.

Members of the New Terminal One Team will be available to discuss opportunities for


### Select a Date & Time

June 2021

<>

Thursday, June 10

SUN	MON	TUE	WED	THU	FRI	SAT
		1	2	3	4	5
6	7	8	9	10	11	12
13	14	15	16	17	18	19
20	21	22	23	24	25	26
27	28	29	30			

 Eastern Time - US & Canada (8:16pm) ▾

10:00am

11:00am

1:00pm

2:00pm

3:00pm


4:00pm


# Stay Connected with The New Terminal One

Visit us at:  
[www.anewjfk.com](http://www.anewjfk.com)

## Register for our next M/W/LBE Information Session: Baggage Handling System

July 13<sup>th</sup> at 2:00pm



TERMINAL PROJECTS   WORK WITH US   MEDIA   **PUBLIC OUTREACH**   CONTACT US   

**THE NEW TERMINAL ONE – M/W/LBE INFORMATION SESSION: EARLY WORKS**

Tuesday, June 8, 2021  
2:00 PM – 3:00 PM

Webinar – [Register here](#)

[Event Flyer](#)

**THE NEW TERMINAL ONE – M/W/LBE INFORMATION SESSION**

Tuesday, July 13, 2021  
2:00 PM – 3:00 PM

Webinar – [Register here](#)

**THE NEW TERMINAL ONE – M/W/LBE INFORMATION SESSION**

Tuesday, August 10, 2021  
2:00 PM – 3:00 PM

Webinar – [Register here](#)

**THE NEW TERMINAL ONE – M/W/LBE INFORMATION SESSION**

Tuesday, September 14, 2021  
2:00 PM – 3:00 PM

Webinar – [Register here](#)

			PM
13-Apr-2021	The New Terminal One – M/W/LBE Information Webinar	Webinar	2:00 PM – 3:00 PM
9-Mar-2021	The New Terminal One – M/W/LBE Information Session	Webinar	2:00 PM – 3:00 PM
9-Feb-2021	The New Terminal One – M/W/LBE Information Session: Understanding Insurance	Webinar	2:00 PM – 3:00 PM

[Previous](#)   [Next](#)

PRIVATE & CONFIDENTIAL



# **The New Terminal One at JFK**

## **Virtual Office Hours – Monday - Friday 9am-5pm**

Contact us at: [info@onejfk.com](mailto:info@onejfk.com)  
For more information: [www.anewjfk.com](http://www.anewjfk.com)

