

# THE NEW TERMINAL ONE

JFK INTERNATIONAL AIRPORT

**M/W/LBE, SDVOB Information Session: Understanding Insurance Requirements**

March 8, 2022





# The New Terminal One

- To be built on site of the existing Terminal 1, Terminal 2 and former Terminal 3
- 2.4M square feet of terminal space – 250% larger than existing terminal
- More than 300,000 square feet of dining, retail, lounges, and recreational space, offering passengers a uniquely New York sense of place.

**9** Widebody Gates / **1** Narrow body Gate

**0.7** million square foot building

**45** acres (current T1 site)

**All-International** traffic



**23** Widebody Gates / **1** Narrow body Gate

**2.4** million square foot building

**134** acres (current T1, T2 and former T3 sites)

**All-International** traffic





# The New Terminal One Commitment

## Reaffirming Our Commitments

- **30% M/WBE goal (20% MBE, 10% WBE)** across all phases and disciplines of the project
- **3% SDVOB goal** across all phases and disciplines of the project
- Hiring goals for minorities and women (**40% for laborers, 30% for other trades and 7% for women**)
- **Prioritization of local firms** starting with SE Queens and Western Nassau, followed by Borough of Queens and New York /New Jersey Port District





# Commitment to the Community

## Jobs



**10,000+** total jobs

**6,000+** local construction jobs

## Local



**Creating** opportunities for local firms and residents

**Prioritizing** 37 local zip codes and Queens

## Labor



**Project Labor Agreement** with leading MWBE and local hiring provisions

**Building Trades** investing through Ullico as a Financial Sponsor

## Community



**Initiatives** on education, workforce, environmental, and business development

**JFK Airport Academy** to upskill local workforce

## Sustainability



**Green Energy** and carbon reduction initiatives

**LEED Certification** through construction and state-of-the-art operational capabilities

**Envision Certification** to evaluate the sustainability of civil infrastructure

## Diversity

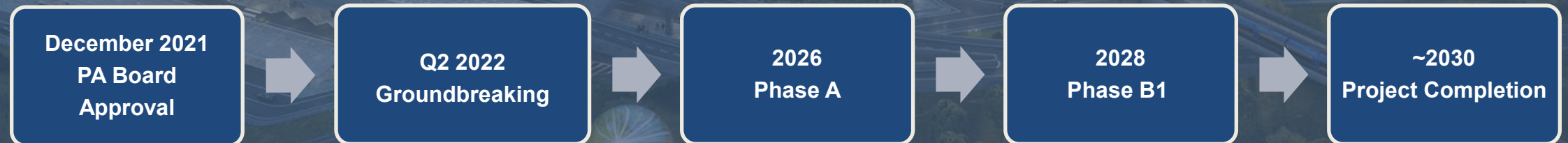
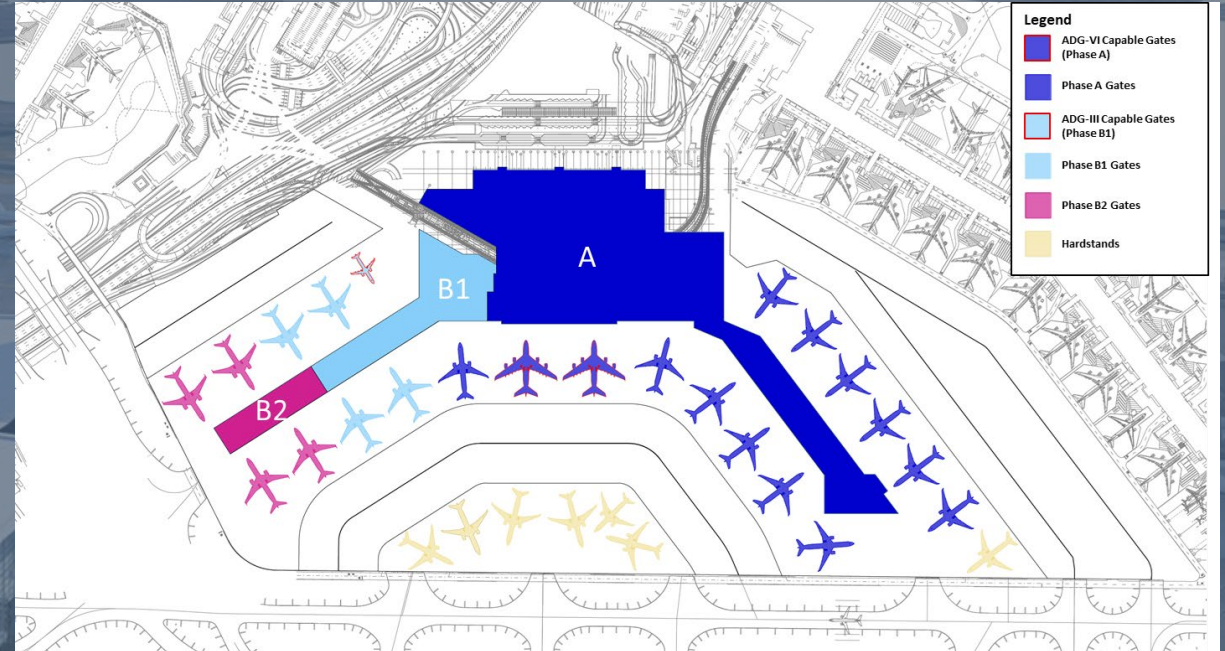


**30% M/WBE** participation goal across all disciplines and phases; **3% SDVOB** participation goal for design and construction work



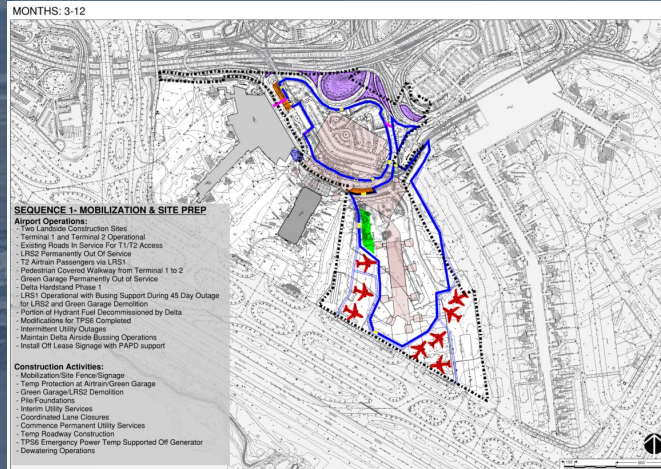
# Project Phasing

- 23 gates to be built in phases
  - 14 gates in Phase A
  - 5 gates in Phase B1
  - 4 gates in Phase B2
- Phasing is subject to international passenger traffic levels, with full completion anticipated in approximately 2030

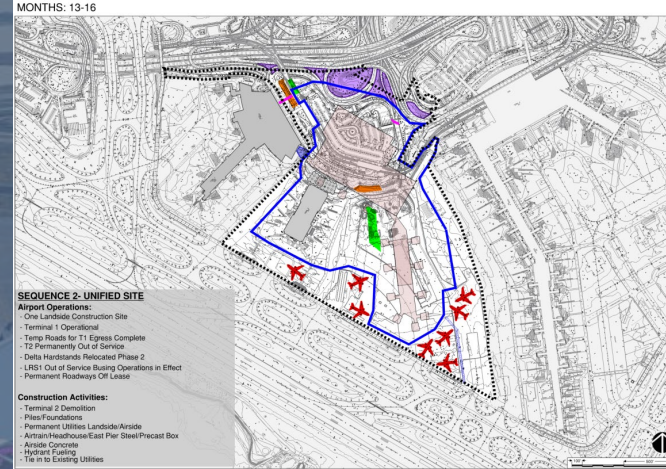




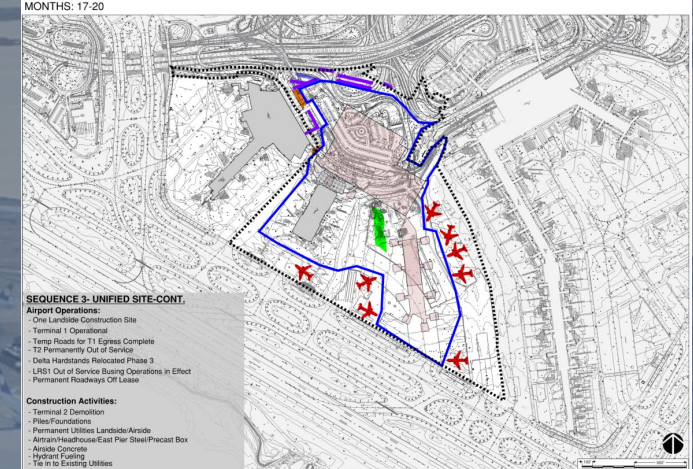
# Construction Phasing



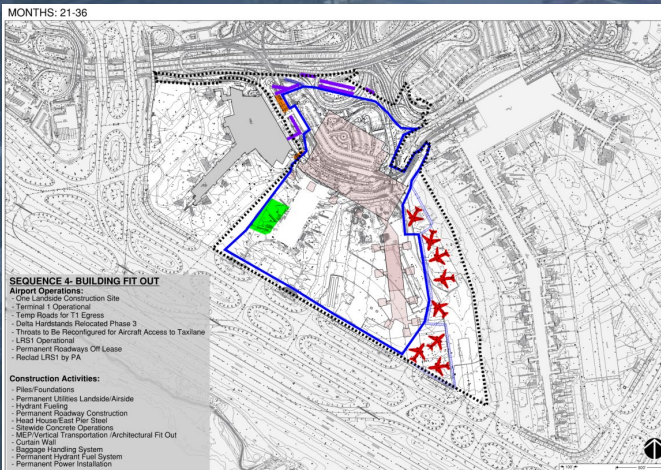
Phase 1



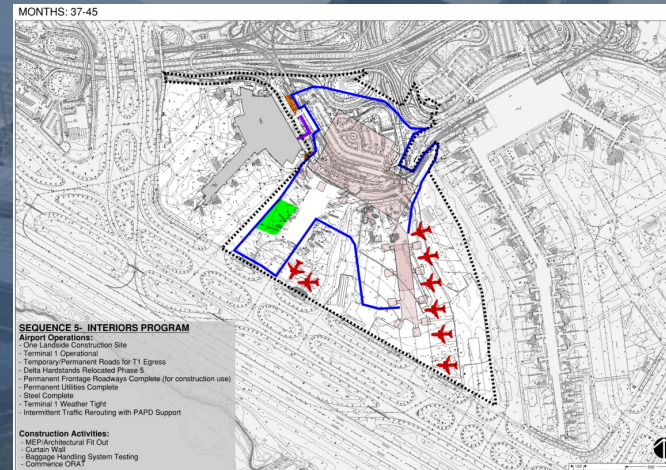
Phase 2



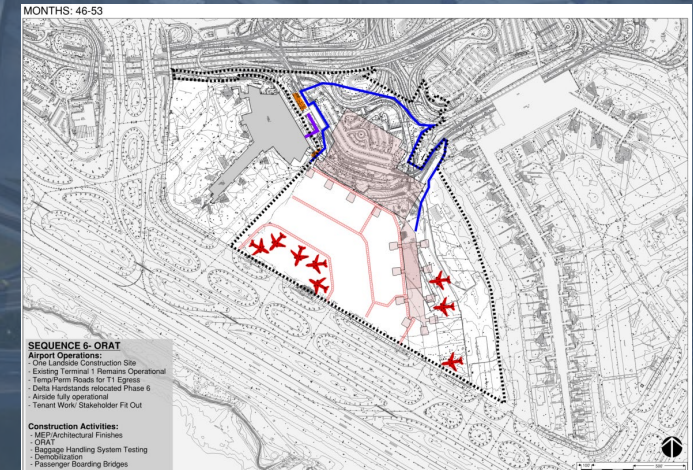
Phase 3



Phase 4



Phase 5

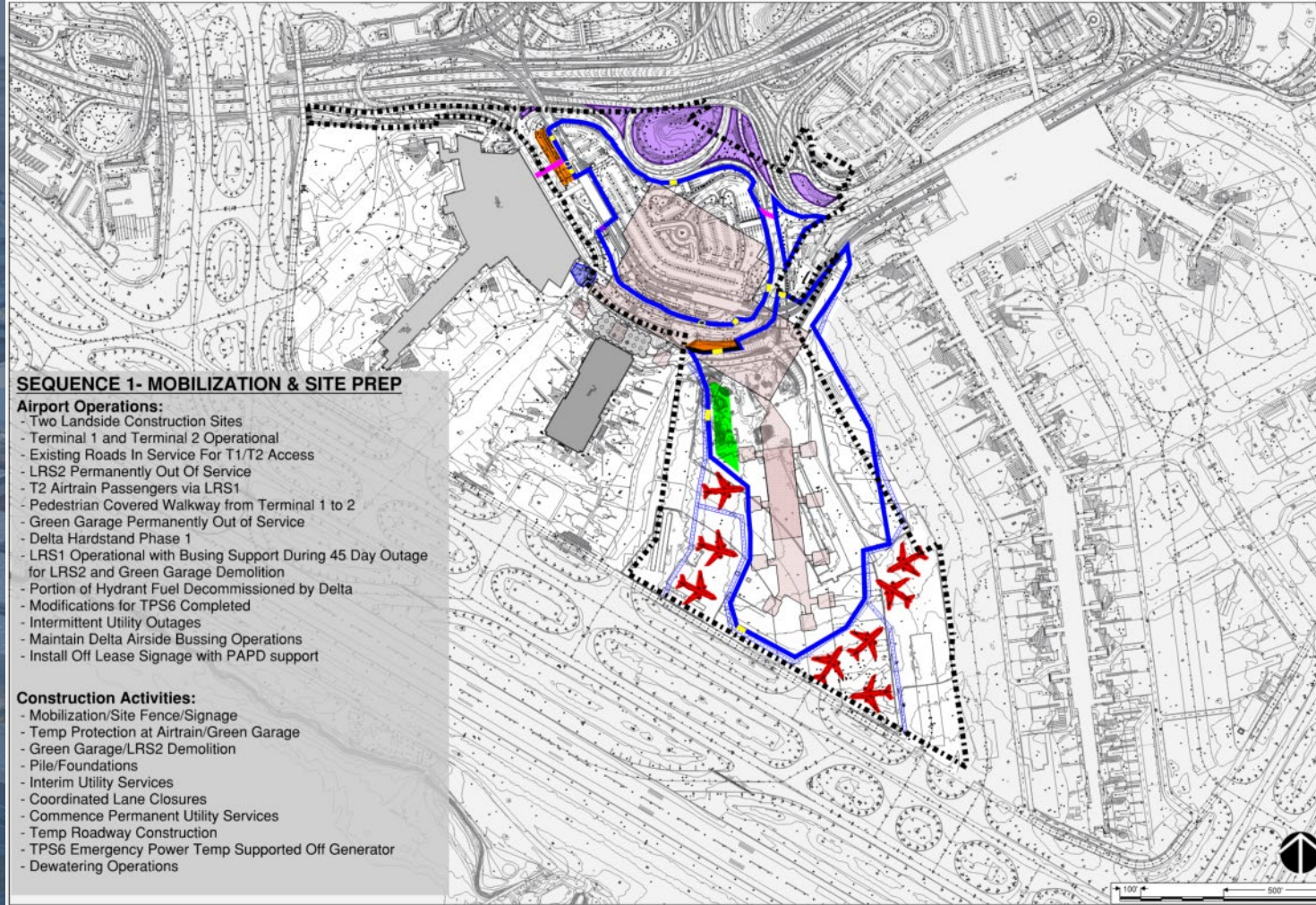


Phase 6



# Construction – Phase 1

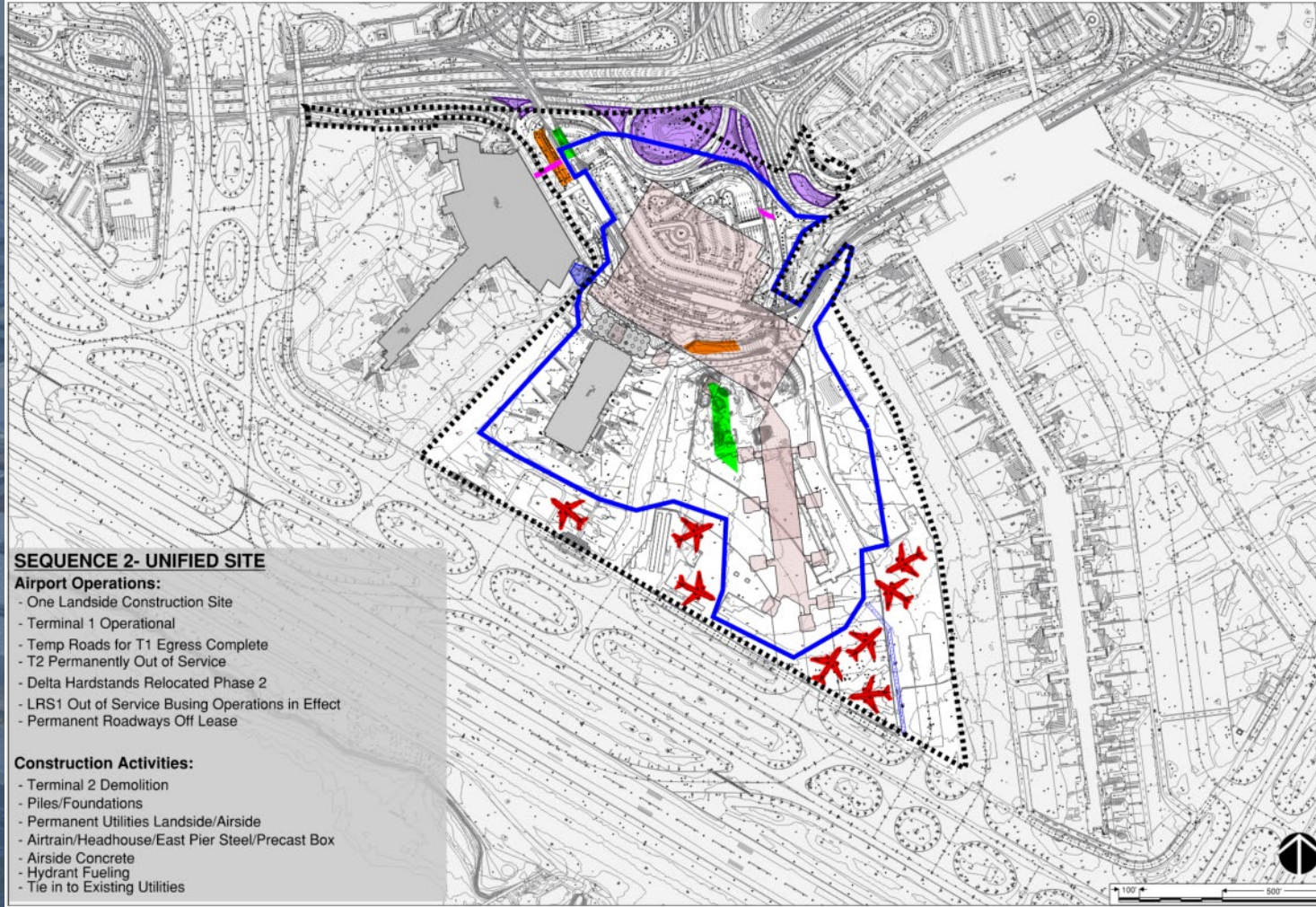
MONTHS: 3-12





# Construction – Phase 2

MONTHS: 13-16





# Opportunities – Early Works Electrical

**BID  
LAUNCH**  
February 22

**PRE-BID  
CONFERENCE**  
March 15

**PROPOSAL  
DUE**  
March 24

Early Works Electrical	Contract Amount
Material - Conduit, Fittings, Cable, Lighting	\$
Equipment - Switchgear, Switches, Charging Station	\$\$
Substation Furnish & Install	\$\$
Temporary Lighting - Fence & Roadway	\$
Rigging	\$
Testing & Startup	\$

Contract Ranges	
\$	< \$1mm
\$\$	\$1mm - \$5mm
\$\$\$	\$5mm - \$10mm
\$\$\$\$	> \$10mm



# Opportunities – Airside: Civil & Electrical

**BID  
LAUNCH**  
**March 1**

**PRE-BID  
CONFERENCE**  
**March 15**

**PROPOSAL  
DUE**  
**March 24**

Airside Civil	Contract Amount
Demo Existing Airfield	\$\$\$\$
Demo Existing Box Culvert Protective Slab	\$\$
Removing Hydrant Fueling	\$
Airfield Concrete	\$\$\$\$
Airside VSR Pavement	\$\$
Airfield Striping	\$
Piles & Foundations for Box Culvert & Misc. Equipment	\$\$\$
Stormwater RCP & Manholes	\$\$\$\$
Relocate Existing Utilities	\$\$
Airside Sanitary Sewer - Permanent & Interim	\$\$
Airside Low Pressure Domestic Water - Permanent & Interim	\$\$
Temporary AOA Fencing	\$\$
Bollards	\$
Civil Support for Utilities - Excavation & Trenching & Support	\$\$\$
Dewatering	\$\$

Airside Electrical	Contract Amount
15kV Duct Banks	\$\$\$
480V Duct Banks	\$\$
Communication Duct Banks	\$\$
Manholes	\$\$
Grounding	\$
Aircraft Docking System Power	\$
Apron Lighting - High Mast	\$
Aviation Lighting - Centerline, Base Cans, Conduit & Cable	\$\$
AOA Fence Lighting	\$
AOA PIDS System	\$
Hydrant Fueling Power & Controls	\$\$
Passenger Boarding Bridge Power & Controls	\$\$

Contract Ranges	
\$	< \$1mm
\$\$	\$1mm - \$5mm
\$\$\$	\$5mm - \$10mm
\$\$\$\$	> \$10mm



# Opportunities – Landside: Civil, Electrical & Mechanical

**BID  
LAUNCH**  
**March 1**

**PRE-BID  
CONFERENCE**  
**March 15**

**PROPOSAL  
DUE**  
**March 24**

Landside Civil	Contract Amount
Demo Site Pavement	\$\$\$
Excavation	\$\$
Piles & Foundations	\$
Stormwater RCP & Manholes	\$\$\$\$
Manholes	\$\$
Natural Gas	\$
Sanitary Sewer	\$\$
Temporary Lift Station	\$
Low Pressure Water	\$\$\$
Civil Support for Landside Mechanical Utilities	\$\$\$
Civil Support & Concrete for Electrical Utilities	\$\$\$
Concrete Supports for Utilities	\$\$
Relocate Existing Utilities	\$\$
TPS6 Substation Structure and Slab	\$\$
Dewatering	\$

Landside Electrical	Contract Amount
15kV Duct Banks	\$\$
5kV Duct Banks	\$\$
480V Duct Banks	\$
Communication Duct Banks	\$\$
Grounding	\$
AirTrain Guideway Fiber Backbone	\$
TPS6 Power & Permanent Duct Banks	\$
Temporary Traffic Signals Power & Communication	\$\$
Roadway Lighting	\$\$
Intelligent Transportation System	\$\$
Utility Leak Detection System	\$

Landside Mechanical	Contract Amount
Material - Pipe, Fittings, Valves	\$\$
Leak Detection System	\$
Expansion Compensators	\$
Insulation	\$
Clean & Flush	\$
Testing & Startup	\$

Contract Ranges	
\$	< \$1mm
\$\$	\$1mm - \$5mm
\$\$\$	\$5mm - \$10mm
\$\$\$\$	> \$10mm



# Opportunities – Roadways

**BID  
LAUNCH**  
March 1

**PRE-BID  
CONFERENCE**  
March 15

**PROPOSAL  
DUE**  
March 24

Roadways	Contract Amount
Piles & Foundation	\$\$\$\$
Precast Concrete Beams	\$\$\$\$
Concrete Piers - Rebar, Formwork, Concrete	\$\$\$\$
Structural Steel	\$\$\$\$
Pavement	\$\$\$\$
Striping	\$
Street Lighting - Temporary & Permanent	\$\$
Temporary Barricades & Fencing	\$
Storm Drainage	\$
Signage	\$\$
Bollards	\$
Traffic Signals	\$
Intelligent Transportation System	\$\$\$
Piles & Foundation	\$\$\$\$
Precast Concrete Beams	\$\$\$\$

Contract Ranges	
\$	< \$1mm
\$\$	\$1mm - \$5mm
\$\$\$	\$5mm - \$10mm
\$\$\$\$	> \$10mm



# Opportunities – Piles & Foundations

**BID  
LAUNCH**  
March 1

**PRE-BID  
CONFERENCE**  
March 15

**PROPOSAL  
DUE**  
March 24

Piles & Foundations	Contract Amount
Pile Fabrication	\$\$\$\$
Pile Driving	\$\$\$\$
Pile Drilling	\$\$\$\$
Test Pits	\$
Pile Caps & Grade Beams Rebar	\$\$\$\$
Pile Caps & Grade Beams Formwork	\$
Pile Caps & Grade Beams Concrete	\$\$\$\$
RCA Fill	\$
Ground Improvement	\$
Excavation	\$
Dewatering	\$
Waterproofing	\$

Contract Ranges	
\$	< \$1mm
\$	\$1mm - \$5mm
\$	\$5mm - \$10mm
\$	> \$10mm



# Opportunities – Curtain Wall

**BID  
LAUNCH**  
March 4

**PRE-BID  
CONFERENCE**  
March 15

**PROPOSAL  
DUE**  
April 8

Curtain Wall	Contract Amount
Design & Engineering Assist	\$\$\$
Mockup Assembly & Testing	\$\$
Headhouse Curtain Wall System	\$\$\$\$
East Pier Curtain Wall System	\$\$\$\$
Crane Rental & Rigging	\$\$
Opaque Panel System	\$\$\$\$
Wall Insulation	\$\$
Wall Vapor Barrier	\$
Exterior Metal Panel Soffit	\$\$\$\$
Soffit Framing & Support	\$\$
Exterior Automatic Glass Doors	\$\$
Headhouse Clerestory	\$\$\$
East Pier and Low Roof Clerestory	\$\$\$

Contract Ranges	
\$	< \$1mm
\$\$	\$1mm - \$5mm
\$\$\$	\$5mm - \$10mm
\$\$\$\$	> \$10mm



# Opportunities – Vertical Transportation

**BID  
LAUNCH**

**April 1**

**PRE-BID  
CONFERENCE**

**April 22**

**PROPOSAL  
DUE**

**May 13**

Vertical Transportation	Contract Amount
Elevators	\$\$\$\$
Escalators	\$\$\$\$
Moving Walks	\$\$\$
Vertical Transportation Monitoring System - VTMS	\$\$
Cab Interior Finishes	\$\$
Vertical Transportation Controllers	\$\$
Electrical Support	\$

Contract Ranges	
\$	< \$1mm
\$\$	\$1mm - \$5mm
\$\$\$	\$5mm - \$10mm
\$\$\$\$	> \$10mm



# Opportunities – Structural Steel

**BID  
LAUNCH**

**April 1**

**PRE-BID  
CONFERENCE**

**April 22**

**PROPOSAL  
DUE**

**May 13**

Structural Steel	Contract Amount
Steel Fabrication	\$\$\$\$
Steel Erection	\$\$\$\$
Crane Rental	\$\$\$
Corrugated Decking	\$\$\$\$
Inspector	\$\$
Detailing	\$\$\$
Precast Member Fabrication	\$\$\$
Precast Member Erection	\$\$\$
Connections – Bolted & Welded	\$\$\$\$
Flagging / MPT	\$
Scaffolding	\$

Contract Ranges	
\$	< \$1mm
\$\$	\$1mm - \$5mm
\$\$\$	\$5mm - \$10mm
\$\$\$\$	> \$10mm



# Opportunities – Roofing

**BID  
LAUNCH**  
June 15

**PRE-BID  
CONFERENCE**  
July 6

**PROPOSAL  
DUE**  
July 27

Roofing	Contract Amount
TPC/PTO Roofing Membrane	\$\$\$\$
Rigid Insulation	\$\$\$\$
Flashing	\$
Waterproofing / Vapor Barrier	\$\$
Fall Protection	\$\$
Roof Pavers	\$\$
Expansion Joints	\$
Gutters / Scuppers	\$

Contract Ranges	
\$	< \$1mm
\$\$	\$1mm - \$5mm
\$\$\$	\$5mm - \$10mm
\$\$\$\$	> \$10mm



# Preliminary Insurance Requirements

## Owner Controlled Insurance Program (OCIP) Overview



# Preliminary Insurance Requirements

## GENERAL LIABILITY

- \$2,000,000 per occurrence for Bodily Injury and Property Damage and \$4,000,000 aggregate

## EXCESS LIABILITY

- \$25,000,000 per occurrence and \$25,000,000 aggregate

## AUTOMOBILE LIABILITY

- \$5,000,000 per occurrence (higher limits if work is inside AOA restricted space)

## PROFESSIONAL LIABILITY

- \$2,000,000 each claim (If scope includes design responsibility)

## WORKERS' COMPENSATION AND EMPLOYERS' LIABILITY

- Statutory / \$1,000,000 each accident / \$1,000,000 each employee / \$1,000,000 policy limit



# What is an OCIP?

- An Owner Controlled Insurance Program (OCIP) is project specific insurance program that provides coverage for the Owner and Enrolled Contractors.
- The OCIP provides Workers' Compensation, Employer's Liability, General Liability Excess Liability, Builders Risk and Pollution Liability to all Enrolled Contractors for On Site Activities. Coverage only applies to operations in connection with work performed at the JFK Terminal 1 Project Site.



# Who Should Participate?

- All Eligible Contractors must participate in the OCIP. Enrollment under the OCIP is not automatic – all Eligible Contractors must submit their enrollment materials to the OCIP Administrator.
- Certain trade work is excluded from the OCIP, and these contractors will be required to provide evidence of their own insurance coverages.

## Typical Excluded Contractors:

- Hazardous Material Remediation / Removal and / or Transport, and their consultants. Any asbestos or lead abatement and other pollution exposures or blasting.
- Work Performed Off – Site OR Contractors that do not generate any On Site Payroll.
- Vendors / Suppliers / Material Dealers or Haulers / Truckers that are making deliveries or pick up services at JFK Terminal 1.



# What is Covered under the OCIP?

## WORKERS' COMPENSATION

- Statutory Limits

## EMPLOYER'S LIABILITY

- \$1,000,000 (each accident)

## COMMERCIAL GENERAL LIABILITY

- \$15,000,000 (per claim / aggregate)

## EXCESS LIABILITY

- \$300,000,000 (per claim / aggregate)

## POLLUTION LEGAL LIABILITY

- \$100,000,000 (per claim / aggregate)

## BUILDERS RISK

- Replacement Cost



# What is **NOT** Covered under the OCIP?

- Automobile Liability including Truckers Liability and Commercial Automobile
- Coverage for Contractor's Tools, Equipment or Vehicles, including Hoists and Cranes
- Coverage for Aircraft or Watercraft
- Professional Liability – Errors & Omissions



# How to Participate in the OCIP

- All Contractors will receive a copy of the OCIP MANUAL in the bid documents.
- Contractors are required to bid on the Project net of insurance.
- Upon Award, Contractors eligible for participation in the OCIP shall provide the following:
  - Completed Enrollment Documents (please refer to manual)
  - Evidence of Workers' Compensation, General Liability and Excess Liability for Off-Site Activities
  - Current copies of policy declarations and rating pages, as well as schedule of forms, as required by the OCIP Administrator.



# OCIP Administrator Roles & Responsibilities

- Process OCIP Enrollments for Eligible Contractors
- Follow Up and Verify Enrollment Information (credit / documents)
- Collect, Review and Maintain Insurance for EXCLUDED Contractors
- Conduct OCIP Kick Off Meeting
- Review and Issue WC Policies to each Enrolled Contractor
- Process Close Out for each Enrolled Contractor
- Collect and Review Monthly Payroll for Enrolled Contractor
- Follow Up for Non-Compliant Items
- Provide OCIP Enrollment Reports to Sponsor and Construction Manager

***\*\* Non-Compliance may result in Monthly Pay Requisition Delays \*\****



What is TradeTapp?



# Web-based Vendor Prequalification

TradeTapp delivers a modern technology platform to the subcontractor prequalification process.

Why use TradeTapp as a subcontractor?

- **No redundancies:** submit any application and automatically create a stored qualification to use for any GC in the network.
- **Confidential & secure:** TradeTapp's secure platform safely protects the transmittal of your sensitive documents unlike email or fax.
- **Increased visibility:** By signing up to TradeTapp, you are joining the largest builder's network in Construction. This means your company can be found for more projects.

Manage Users

Accept a New Invite

gr8builders@tradetapp.com

AWAITING SUBMISSION

<div> <div>GCI</div> <div>Primary Qualification</div> </div>	Requested: 10/30/2019	<div> <div>Last Submitted:</div> <div>10/30/2019</div> </div>	Renewal	<div>Open</div>
<div> <div>Devcon Construction, Inc.</div> <div>Primary Qualification</div> </div>	Requested: 02/14/2020	New Invitation		<div>Open</div>
<div> <div>Hathaway Dinwiddie</div> <div>Primary Qualification</div> </div>	Requested: 08/05/2019	New Invitation		<div>Open</div>
<div> <div>The Lemoine Company</div> <div>Primary Qualification</div> </div>	Requested: 10/26/2018	<div> <div>Last Submitted:</div> <div>01/22/2019</div> </div>	Renewal	<div>Open</div>
<div> <div>Suffolk Construction</div> <div>Primary Qualification</div> </div>	Requested: 06/19/2019	New Invitation		<div>Open</div>



When receiving an Invitation to Prequalify

1. Invited by the Tishman Team
2. Self-invited by Public Link





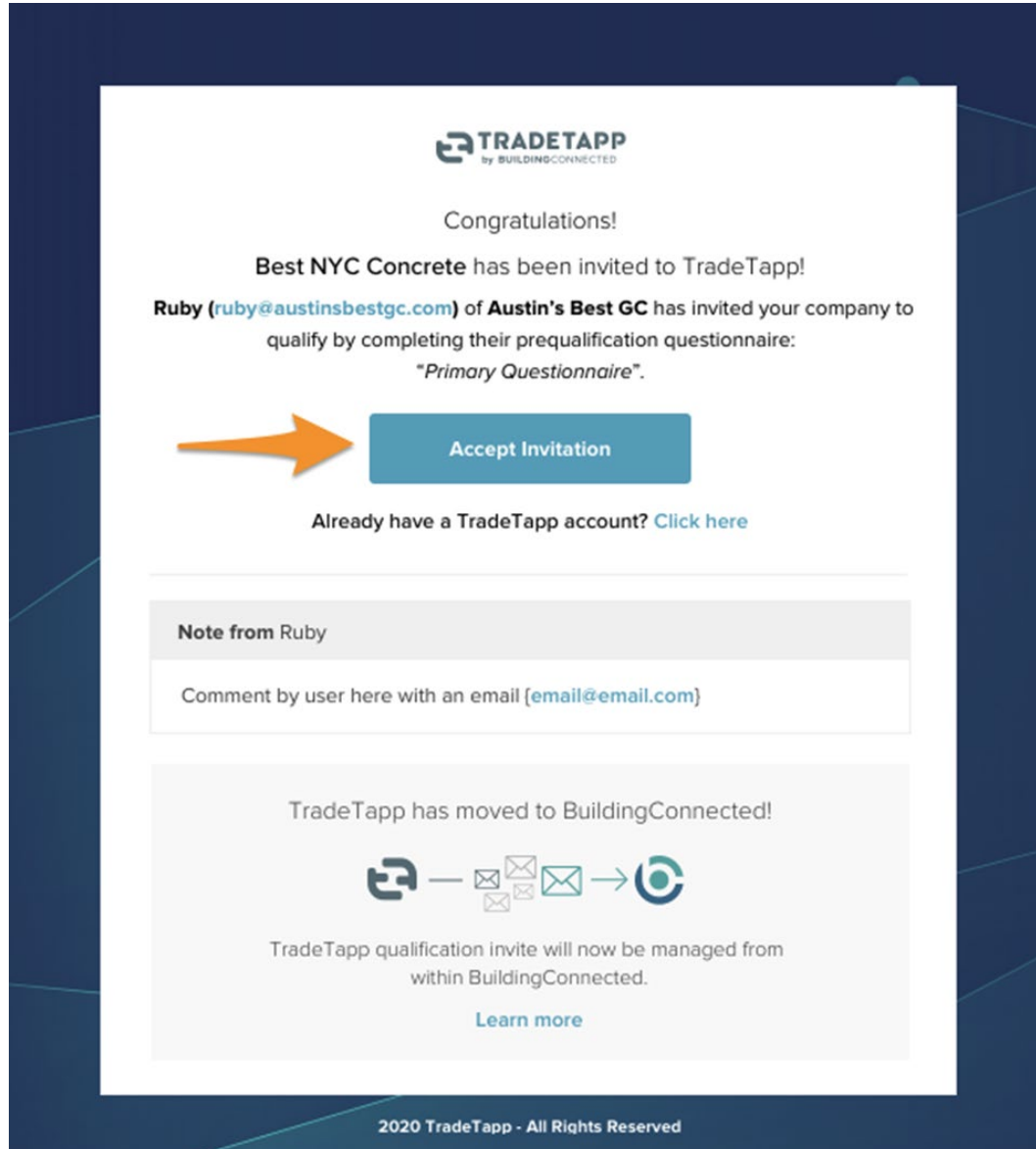
Sign in to your  
BuildingConnected account

NEXT



If you do not have an  
existing TradeTapp  
account...

- If you are new to BuildingConnected, you will be prompted to create an account before viewing the qualification questionnaire.
- Click on “Need an Account?” to begin the account creation process.
- Note: you do not need a paid subscription to join BuildingConnected or access your qualification applications.



- Locate the invitation email in your inbox and click “**Accept Invitation**” to begin logging into your account.
- TradeTapp is now fully integrated with BuildingConnected, so you will be using your BuildingConnected credentials to access any prequalification applications you receive.
- If you encounter any technical difficulties, please reach out directly to [support@tradetapp.com](mailto:support@tradetapp.com)





TERMINAL PROJECTS

WORK WITH US

MEDIA

PUBLIC OUTREACH

CONTACT US

The New Terminal One

Port Authority of NY & NJ

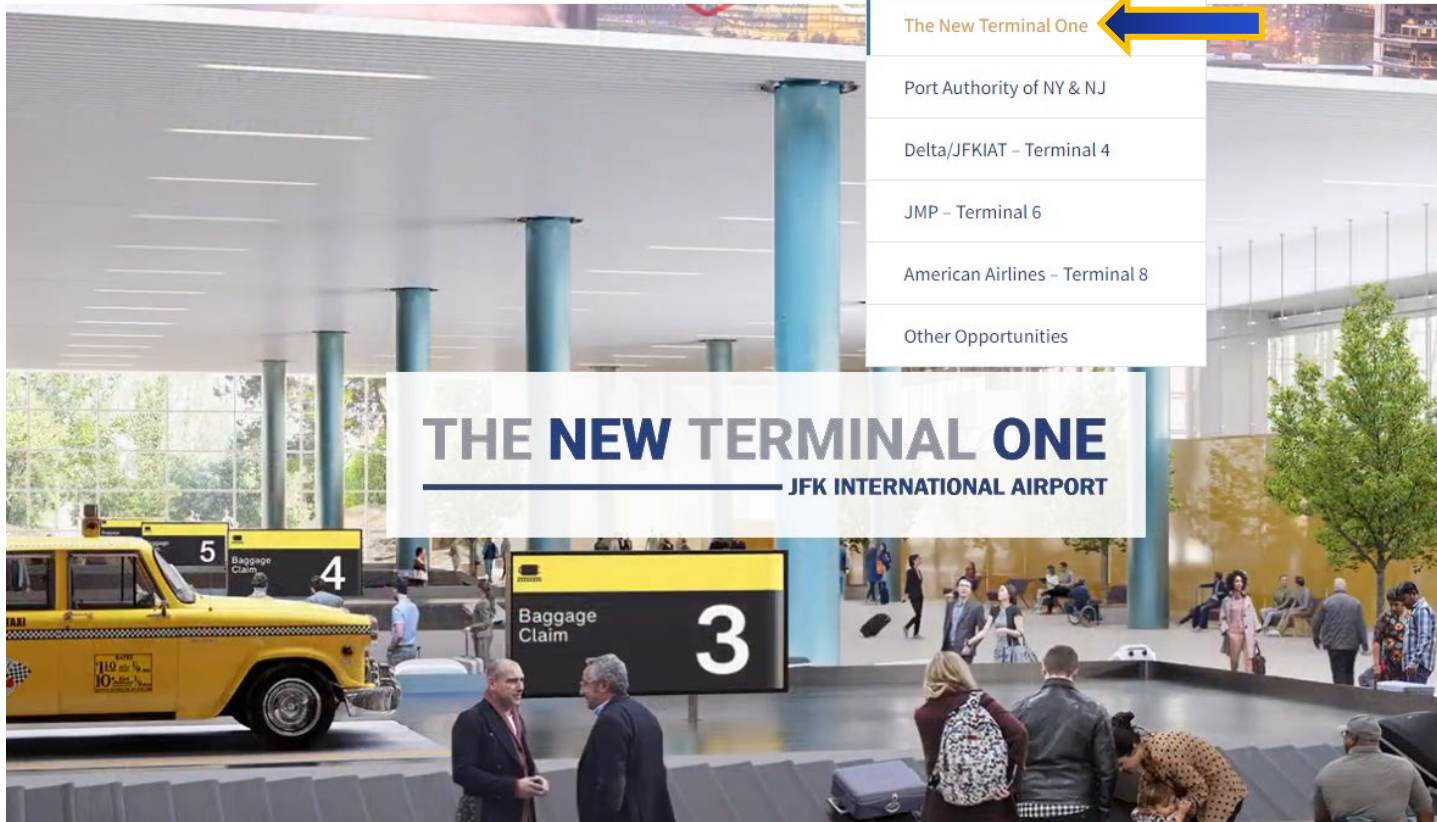
Delta/JFKIAT – Terminal 4

JMP – Terminal 6

American Airlines – Terminal 8

Other Opportunities

**THE NEW TERMINAL ONE**  
JFK INTERNATIONAL AIRPORT



## Public Link To Qualify

- The public link to qualify is on <https://www.anewjfk.com/projects/the-new-terminal-one/> for subcontractors to self-invite and complete the questionnaire.
- Questions? Reach out to [support@buildingconnected.com](mailto:support@buildingconnected.com).

# JOIN THE NEW TERMINAL ONE TEAM

The New Terminal One invites all vendors to join the AECOM Tishman bidders list. Click on the “Prequalify” button below. All Vendors are asked to complete an online Prequalification Questionnaire and upload required financial records and safety documents that provide the team with relevant information concerning their financial health, safety and integrity records.

- 1 First time users, please create an account then login.
- 2 If you have an account, login
- 3 Open the “Qualifications Tab”, followed by the “TradeTapp Invites” to locate the **Tishman Construction Corporation** questionnaire to prequalify for The New Terminal One.
- 4 If you have any questions, please email [support@tradetapp.com](mailto:support@tradetapp.com)



**PREQUALIFY**

*\*If you are a professional services firm, etc, please email us at [info@onejfk.com](mailto:info@onejfk.com), and our team will be in contact.\**





# Difference between *Tishman Construction Corporation* and *AECOM JFK T6* Prequalification

**No redundancies:** submit any application and automatically create a stored qualification to use for any GC in the network.

## ***PLEASE NOTE:***

- You will need to fill out one for Tishman Construction (JFK T1) and;
- You will need to fill out one for AECOM- JFK T6 (Hunt).

The screenshot shows a web application interface for managing qualifications. The top navigation bar is dark blue with the title 'Qualifications' and tabs for 'Manage Our Vendors', 'TradeTapp Invites', 'Other Invites', and 'Permissions & Settings'. Below the tabs, there are two status filters: 'Awaiting Submission' (2) and 'Submitted' (0). The main content area is titled 'Questionnaires that are awaiting submission' and displays a table with two entries. The first entry, 'Tishman Construction Corporation', is circled in red. The second entry is 'AECOM - JFK T6'. Both entries show 'Requested' dates, 'Contact Email' as 'support@buildingconnected.com', 'Last Submitted' as '-', and a 'New Invitation' button. A green 'Open' button is visible at the end of each row.

Qualification Name	Requested	Contact Email	Last Submitted	Action
Tishman Construction Corporation	1/6/2022	support@buildingconnected.com	-	New Invitation
AECOM - JFK T6	1/17/2022	support@buildingconnected.com	-	New Invitation

# THE NEW TERMINAL ONE

JFK INTERNATIONAL AIRPORT

*Q & A*

JFK

JFK





# Stay Connected with The New Terminal One

## 2022 Information Sessions:

- M/W/LBE Information Session, April 12
- M/W/LBE Information Session, May 10
- M/W/LBE Information Session, June 7


*\* Additional sessions will be scheduled for specific scopes of work*

## Office Hours


- Visit us at [www.anewjfk.com](http://www.anewjfk.com) to register for:
- Virtual 1-on-1 Meetings: Daily from 9am to 5pm

## General Inquiries

- [info@onejfk.com](mailto:info@onejfk.com)



**THE NEW TERMINAL ONE**  
JFK INTERNATIONAL AIRPORT



The New Terminal One at JFK  
**Virtual Office Hour Meeting**

🕒 30 min

📺 Web conferencing details provided upon confirmation.

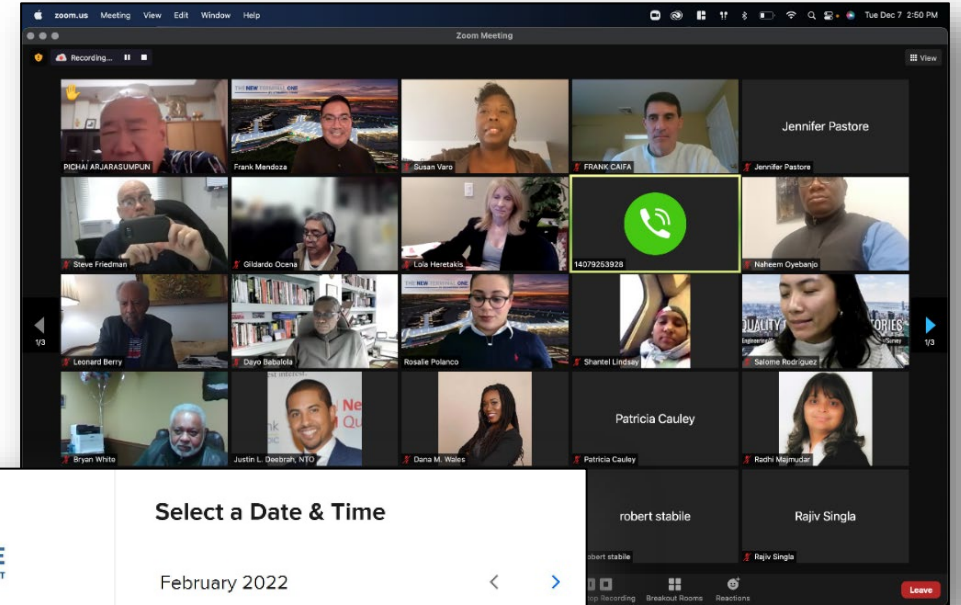
The New Terminal One Team is hosting Virtual Office Hours, Monday through Friday from 9:00 am to 5:00 pm.

Select a Date & Time

February 2022

SUN	MON	TUE	WED	THU	FRI	SAT
		1	2	3	4	5
6	7	8	9	10	11	12
13	14	15	16	17	18	19
20	21	22	23	24	25	26
27	28					

🌐 Eastern Time - US & Canada (6:23pm) ▼



# THE NEW TERMINAL ONE

---

JFK INTERNATIONAL AIRPORT

To learn more visit: [www.anewjfk.com](http://www.anewjfk.com)

General Inquiries: [info@onejfk.com](mailto:info@onejfk.com)

